

HERAKLITH® INSTALLATION GUIDE

WHAT YOU NEED TO KNOW

challenge.
create.
care.

CONTENTS

	Page
Safety considerations	3
Typical System	4
Pre-Installation considerations	5
Placement	8
Installation Sequence	9
Cutting	13
Fixing	14
Maintenance	15

SAFETY CONSIDERATIONS

STORAGE

Herakliith® A2 Decorative Panel and Herakliith® Tektalan A2 SmartTec should be stored properly and handled in such a way as to ensure that they are clean and undamaged.

Herakliith® A2 Decorative Panel and Herakliith® Tektalan A2 SmartTec are supplied loose on pallets with a cardboard edge and top protector, designed for short-term protection only. For longer term protection on site, the product should be stored indoors or under cover and off the ground. Herakliith® A2 Decorative Panel and Herakliith® Tektalan A2 SmartTec should not be left permanently exposed to the elements.

The product must be protected from prolonged exposure to sunlight, and also stored dry and flat.



✓ **Boards protected from weathering potential while covered**

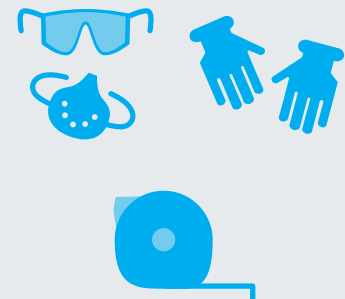
SAFETY EQUIPMENT AND TOOLS

It is recommended that the following Personal Protective Equipment should be used while handling the product:

PPE: Dust mask (FFP1 minimum), gloves, hearing protection if using power tools

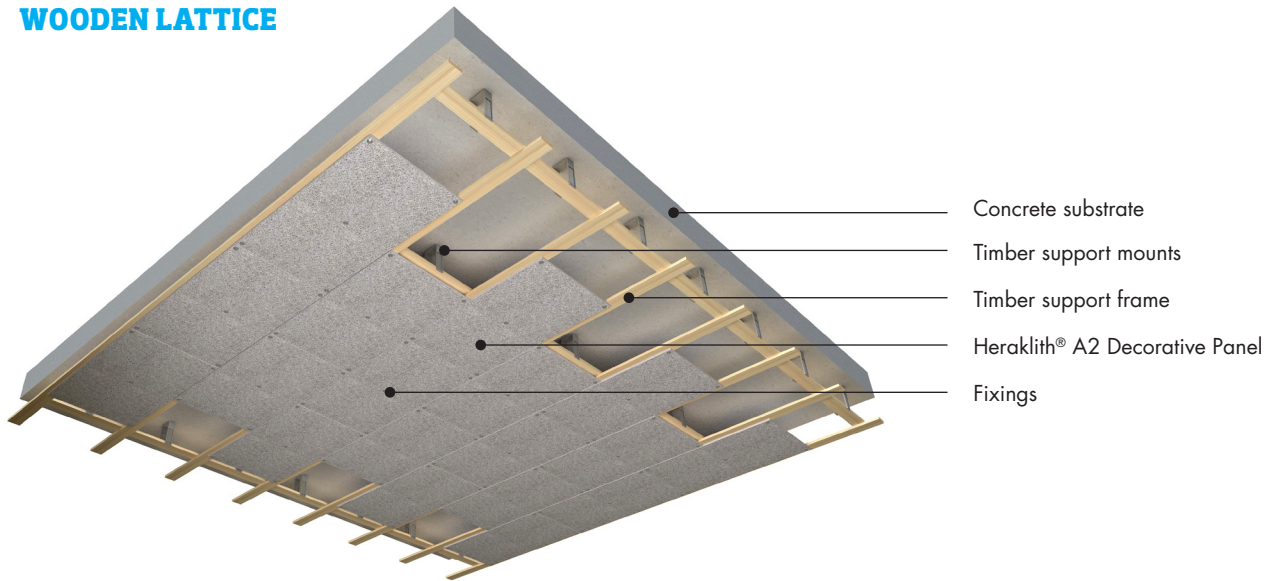
Tools: Circular saw, tape measure

It is recommended that dust masks, gloves and hearing protection if using power tools, should be worn during cutting and handling of the product.

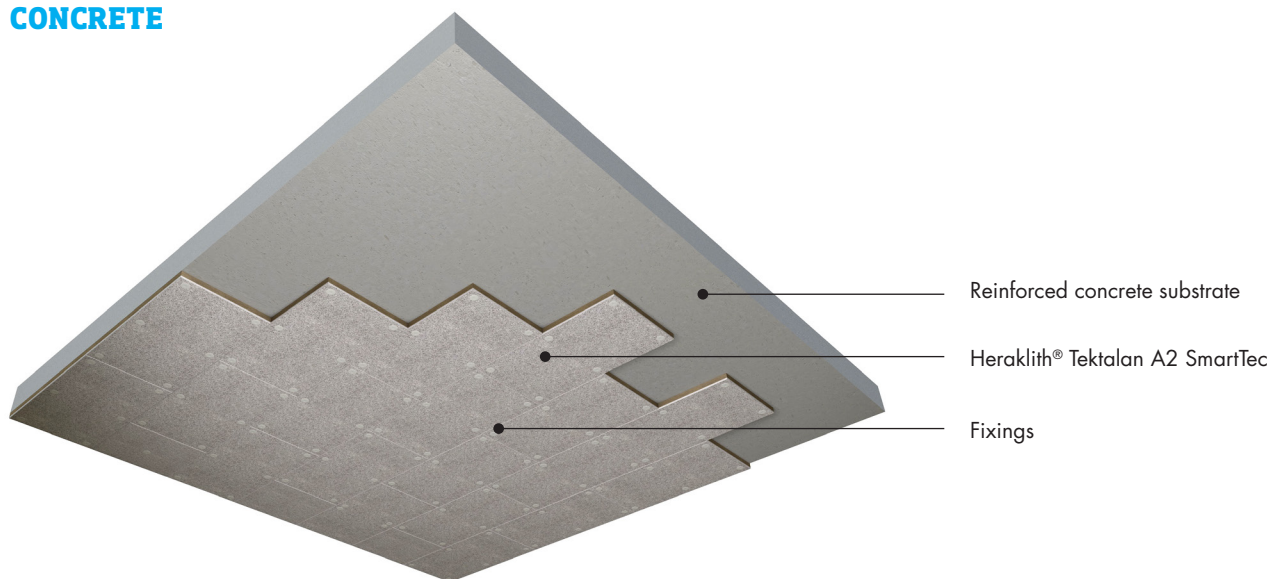


TYPICAL SOFFIT SYSTEMS

WOODEN LATTICE



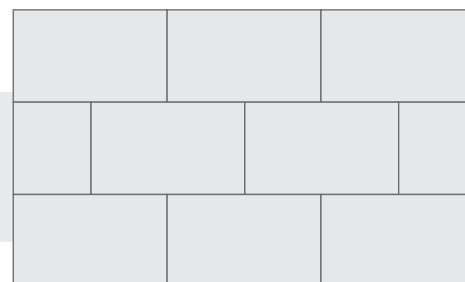
CONCRETE



PRE-INSTALLATION CONSIDERATIONS

LAYOUT

Joints between slabs should be staggered by a minimum of 150mm and coincidental joints should be avoided.



MOUNTING

Fixing patterns should be in accordance with the following principles

Concrete

Heraklith® A2 Decorative Panel (25mm)

- 6 fixings per slab

Heraklith® Tektalan A2 SmartTec

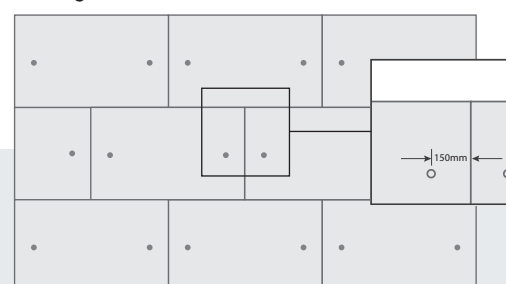
- <100mm – 4 fixings per slab
- >100mm – 2 fixings per slab
- All thicknesses – 5 fixings if REI180 fire resistance is required

Timber support frame / Metal CD profiles

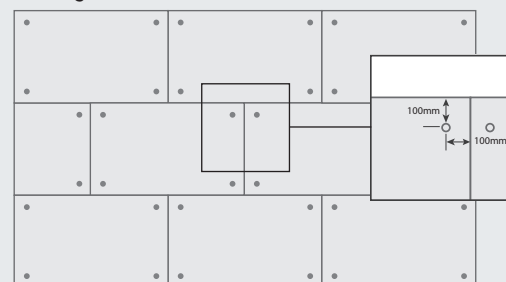
Heraklith® A2 Decorative Panel (25mm)

- 6 fixings per slab

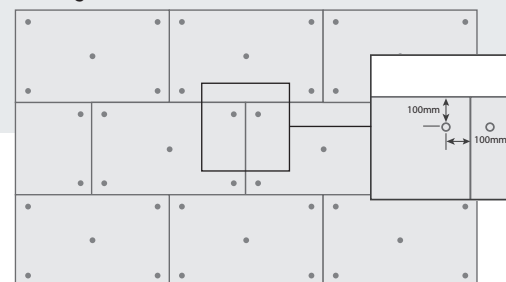
2 fixings Heraklith® Tektalan A2 SmartTec >100mm



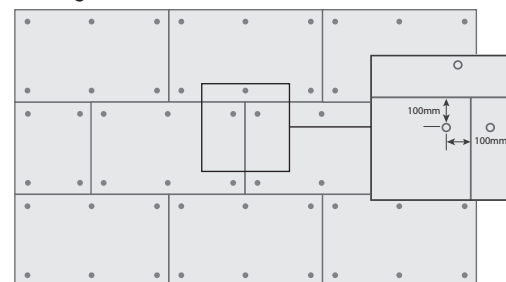
4 fixings Heraklith® Tektalan A2 SmartTec <100mm



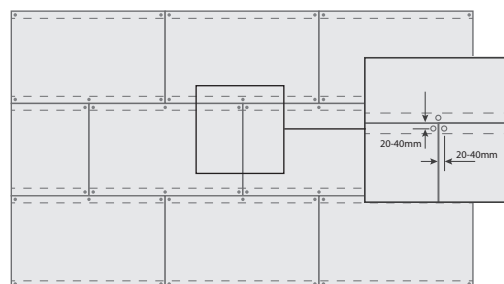
5 fixings Heraklith® Tektalan A2 SmartTec



6 fixings Heraklith® A2 Decorative Panel



Timber support frame / Metal CD profiles 6 fixings Heraklith® A2 Decorative Panel - 25mm thickness



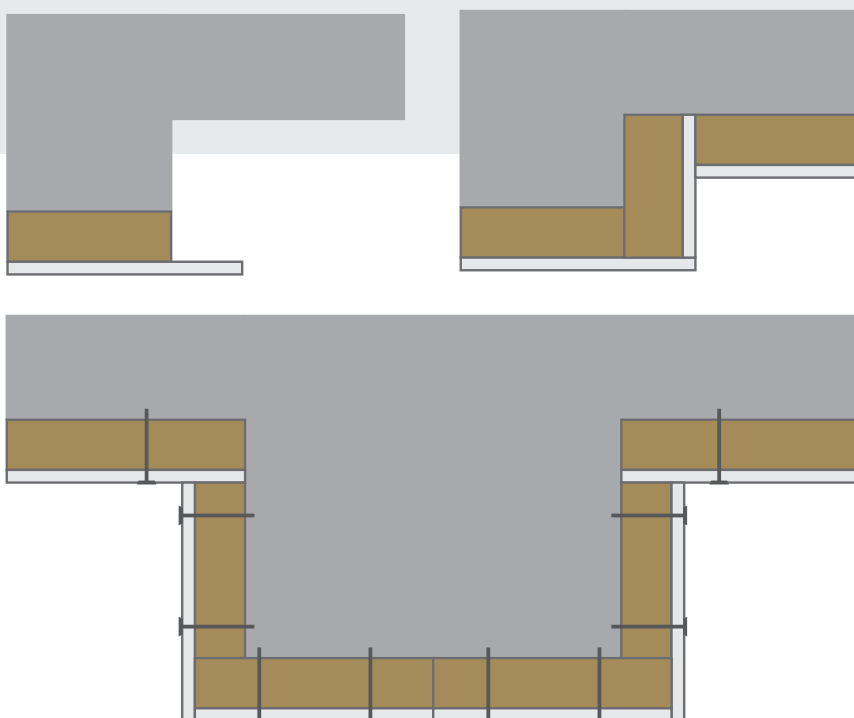
PRE-INSTALLATION CONSIDERATIONS

STEPS IN SOFFIT

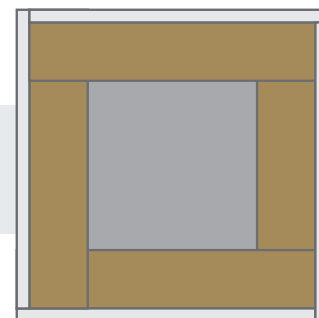
When steps in the soffit are seen using Heraklith® Tektalan A2 SmartTec, the following process should be followed to ensure that the finished installation performs as intended from a thermal and aesthetic perspective.

Firstly, a section of insulation should be trimmed from the edge of the slab, equal to the thickness of insulation being installed. The next slab should then be cut to size to fit into the recess created and the final slab butted tightly to the cementitious facing.

Care should be taken to ensure that all fixings are directly into the soffit substrate and not into other slabs. One metal fixing per board is recommended for all slabs, whether full or sections of slabs.



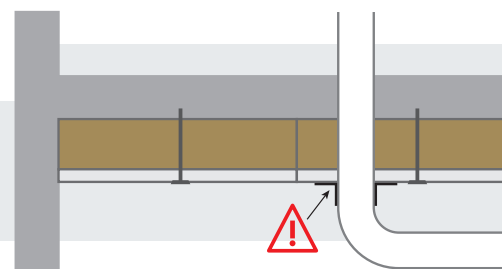
Covering concrete columns should be done using the same approach so that the mineral wool can't be seen on either corner.



PRE-INSTALLATION CONSIDERATIONS

PENETRATIONS

Penetrations should be properly sealed with appropriate fire stopping products in order to maintain periods of fire resistance.



PREVENTING MOISTURE SPOTS

Wood wool panels are in-sensitive to moisture. However, the product coating may turn brown after contact with water. This is caused by the penetrating water dissolving the wood pigments and moving them to the visible side of the panel.

The following solutions can be applied in these instances:

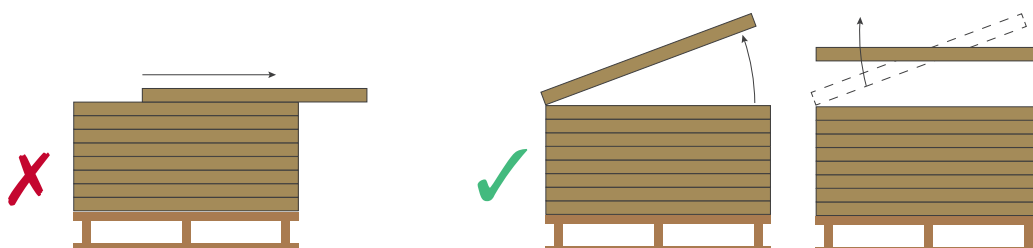
- Water in panels can be prevented with proper detailing, protecting and finishing in accordance with our guidelines
- After drying, lightly scour the panels with fine sandpaper (grit no.80)
- You can get rid of small patches of moisture evidence by applying a light coat of paint in the same RAL colour
- For serious damp spots, we advise you to apply an insulating layer (primer) and then paint over the wood wool panels.

HANDLING PANELS

Tilt the panels up to take them off the pallet in order to avoid damaging them.

Clean off any loose fibres and/or dust with a soft brush.

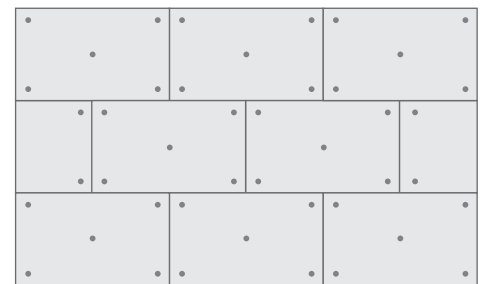
Always work with clean hands and tools.



PLACEMENT

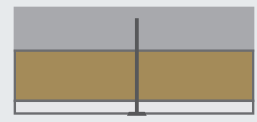
SLABS TO BE IN CONTACT WITH EACH OTHER

Heraklith® A2 Decorative Panel and Heraklith® Tektalan A2 SmartTec should be installed so they are tightly butted together at joints, staggered by a minimum of 100mm.



INTIMATE CONTACT WITH SUBSTRATE

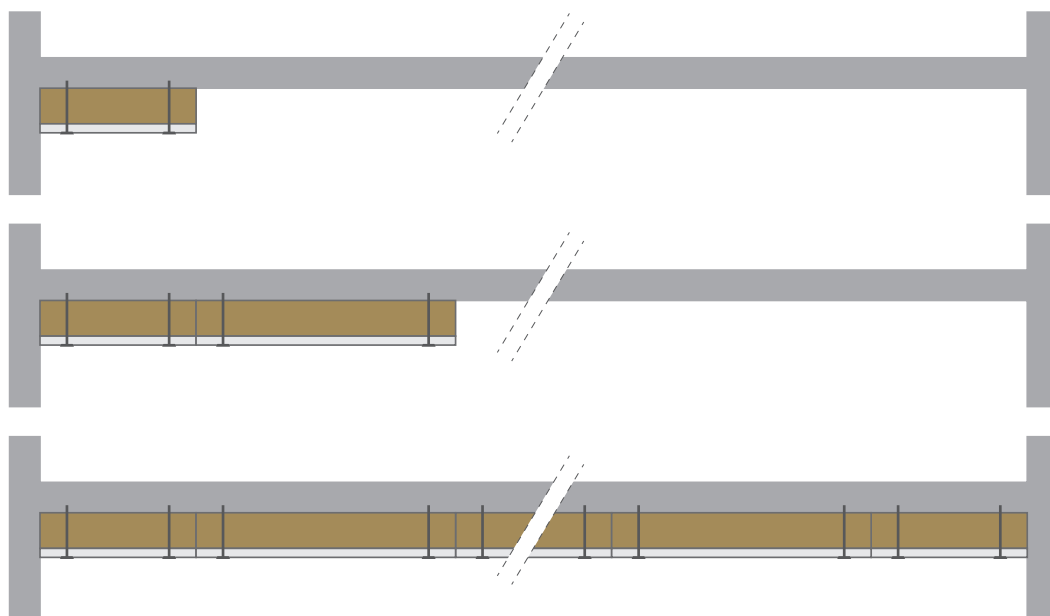
Heraklith® A2 Decorative Panel and Heraklith® Tektalan A2 SmartTec should be in intimate contact with the building substrate. The nature of the insulation material on Heraklith® Tektalan A2 SmartTec lends itself to accommodate any irregularities in the surface of the substrate.



INSTALLATION SEQUENCE

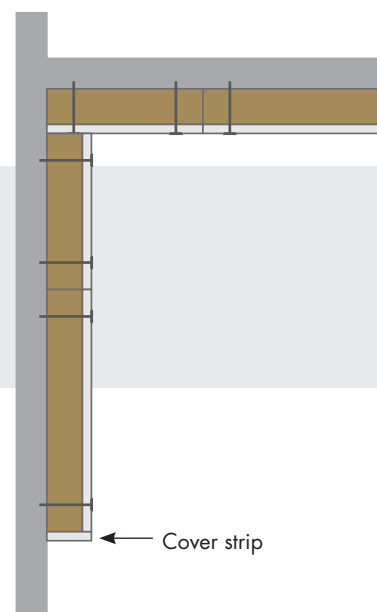
CONCRETE PROCESS

Installation of both Heraklith® A2 Decorative Panel and Heraklith® Tektalan A2 SmartTec can be done by starting in one corner and working across the soffit to finish in the adjacent corner. A singular row of slabs should be installed first to create a straight line from which to butt up against.



COVER STRIP

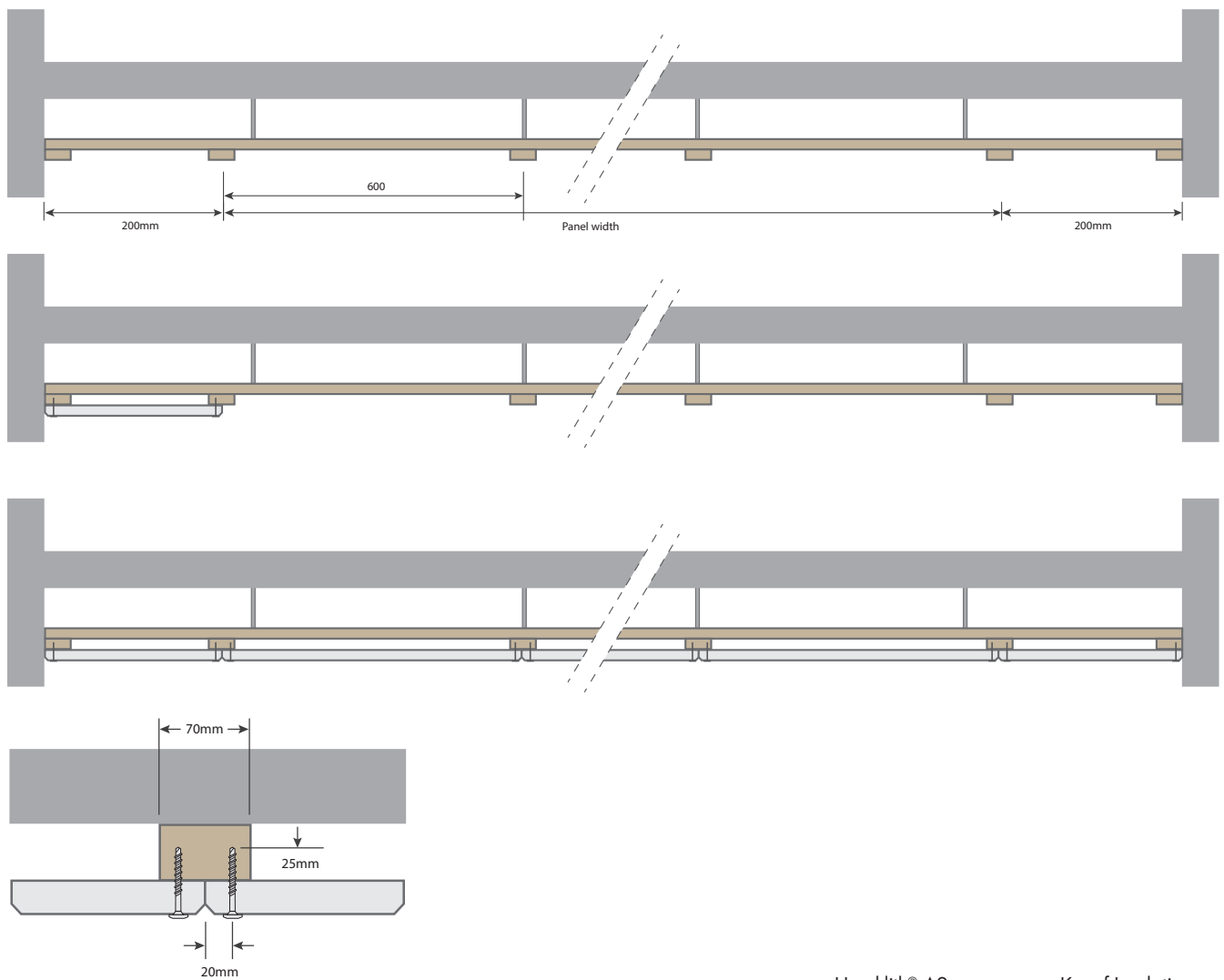
Cover strips for Heraklith® Tektalan A2 SmartTec should be installed using a suitable high tack or silicate based adhesive and are used to finish areas where mineral wool insulation is left visible.



INSTALLATION SEQUENCE

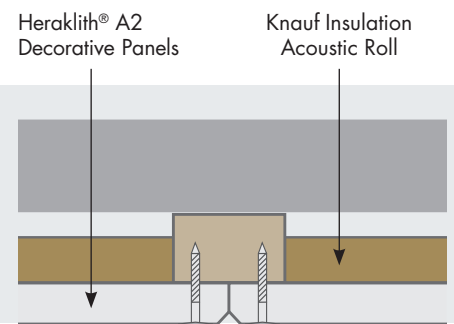
WOODEN LATTICEWORK PROCESS

Installation of Heraklith® A2 Decorative Panel onto wooden latticework is done by starting in one corner and working across the soffit to finish in the adjacent corner. A singular row of slabs should be installed first to create a straight line from which to butt up against.



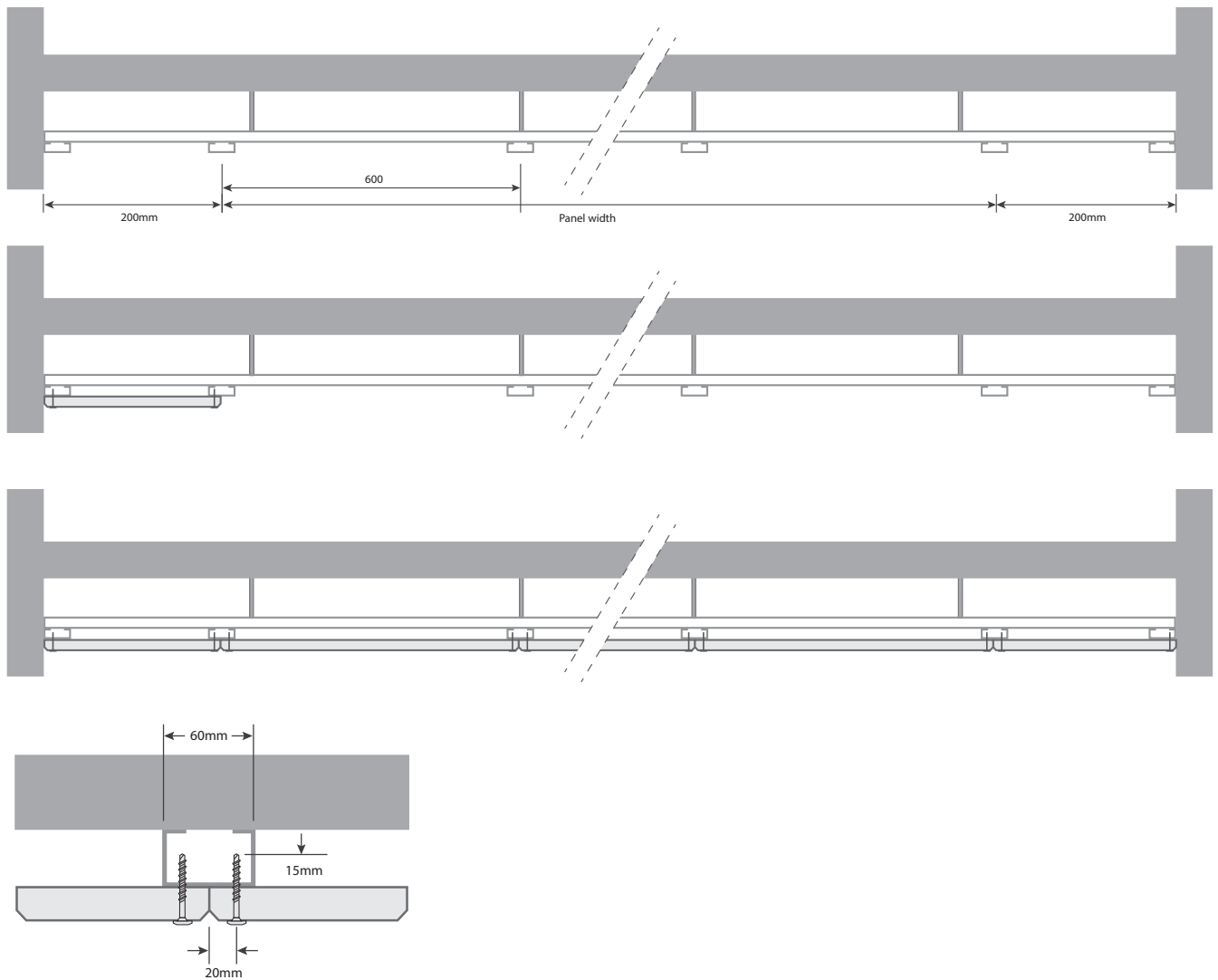
OPTIMAL ACOUSTICS

For optimal acoustic performance, Knauf Insulation Acoustic Roll can be laid on top of Heraklith® A2 Decorative Panel. For further information please contact our Technical Support team.



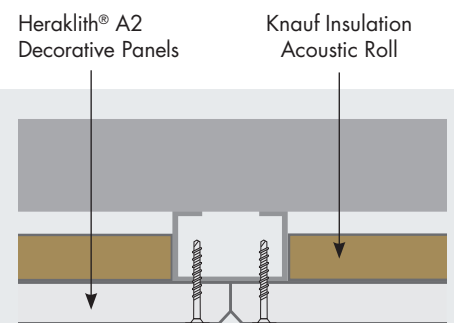
INSTALLATION SEQUENCE

METAL CD PROCESS



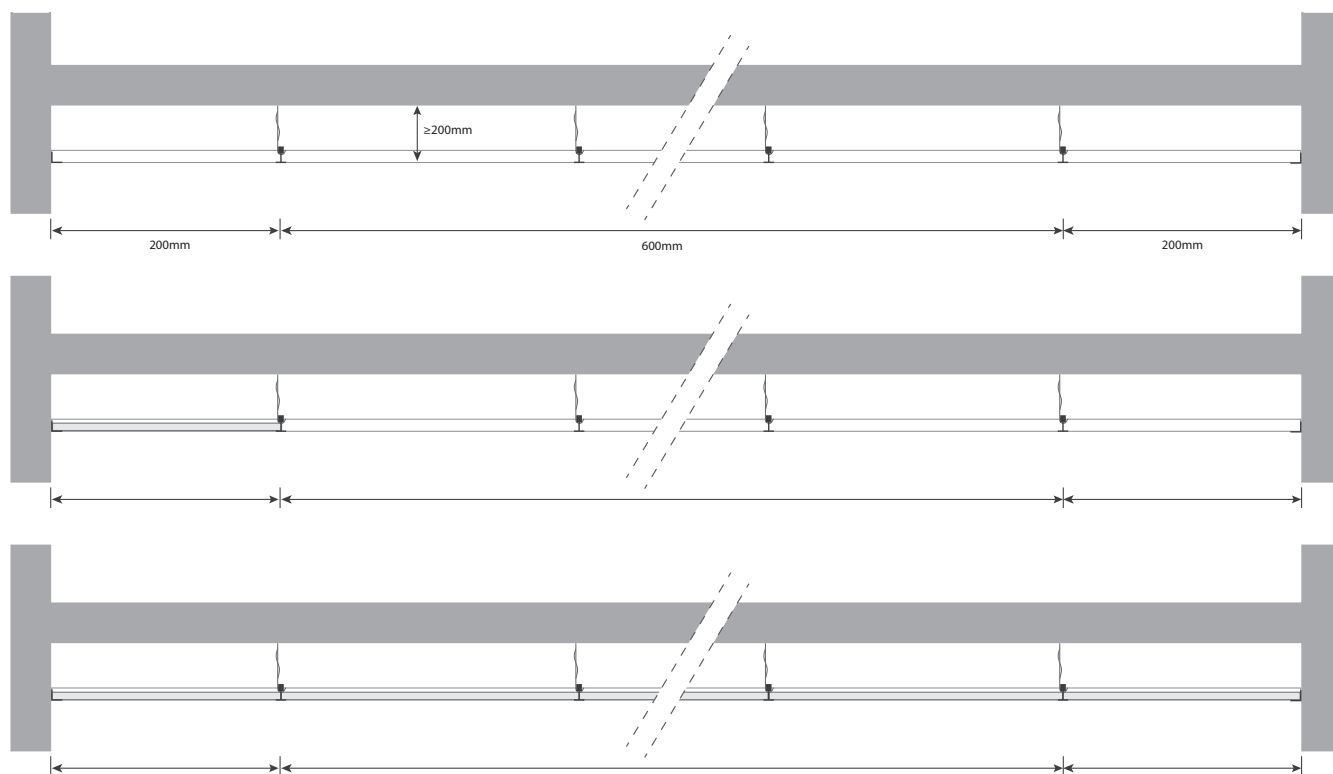
OPTIMAL ACOUSTICS

For optimal acoustic performance, Knauf Insulation Acoustic Roll can be laid on top of Heraklith® A2 Decorative Panels. For further information please contact our Technical Support team.



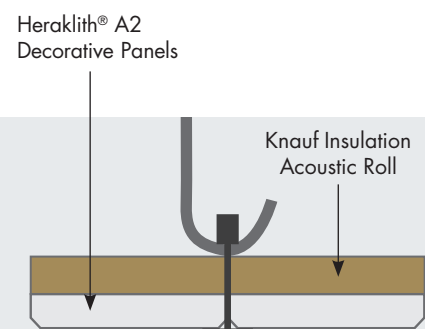
INSTALLATION SEQUENCE

GRID CEILING SYSTEM PROCESS



OPTIMAL ACOUSTICS

For optimal acoustic performance, Knauf Insulation Acoustic Roll can be laid on top of Heraklith® A2 Decorative Panels. For further information please contact our Technical Support team.



CUTTING

CUTTING SLABS

Slabs can be cut with either a fine-tooth handsaw, a table saw, handsaw or circular saw. Ensure appropriate safety precautions are taken when using power tools.

Table Saw

- Saw panels with the visible side up
- Recommended sawblade: Carbide (Widia) blade

Handsaw

- Saw panels with the visible side up
- The sawblade tooth must be suitable for wood

Circular saw

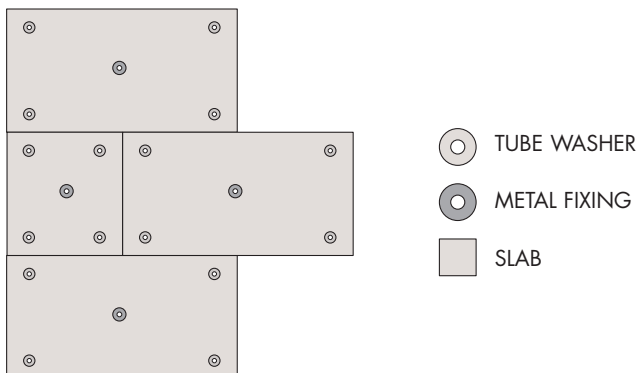
- Always use a guide rail
- Depending on the rotation of blade, saw the panels with the visible side up

AREAS THAT CANNOT ACCEPT A FULL SLAB SHOULD BE FILLED WITH A SLAB SECTION

Areas of insulation that do not require a full slab can be filled using a slab section where the section is cut slightly oversize to give a tight fit and fixed at 600mm intervals in the centre of the section.

✓ Slab cut and snug fit

✗ Loose fit for cut slab section



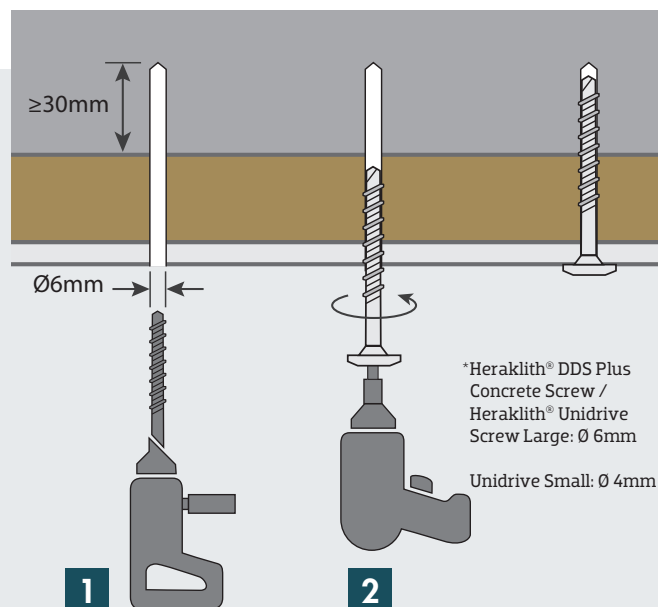
FIXING

LENGTHS

Heraklith® DDS Plus Concrete Screw / Heraklith® Unidrive Screw

Heraklith® DDS Plus Concrete Screw / Heraklith® Unidrive Screw are suitable for standard concrete with a density of 2000-2600 kg/m³. We recommend you use a standard drill bit with a diameter of 6mm. Softer and/or older concrete types may require a smaller drilling diameter. That is why you should always test whether the screw will actually stay there when you use the indicated drill diameter.

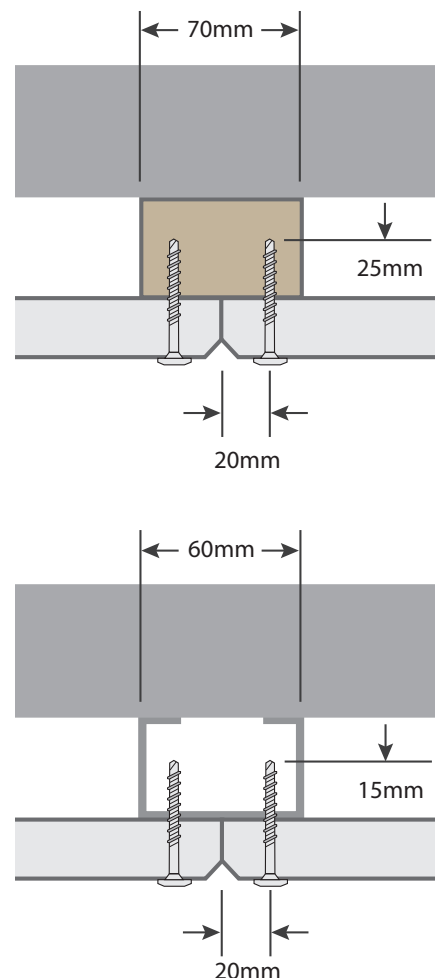
- 1 Drill through the pre-drilled panel into the concrete using a hammer drill in accordance with the corresponding mounting pattern.
- 2 Push the screw into the drilled hole through the panel and screw it in using a cordless drill.



Heraklith® Unidrive Screw

Determine the centre-to-centre distance of the wooden latticework or metal framework according to the chosen mounting configuration. To determine the minimal screw length, take panel thickness plus 25mm.

The Heraklith® Unidrive Screw can be used to install wood wool panels against a wooden latticework, concrete or metal substrates. The flanged head will help stop the screws from overtightening when mounting the panels and prevent the panels from coming loose as a result of wind load.

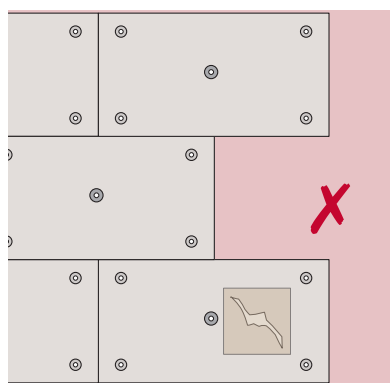
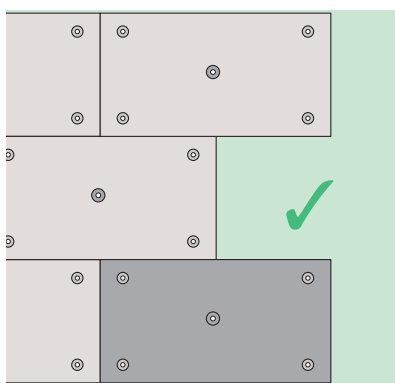


MAINTENANCE

REPAIRS

In the event of small repairs being needed on site, we recommend the replacement of full slabs wherever possible.

✓ Full slab replacement after damage ✗ Small patched repair



CLEANING

Wood wool panels are easy to clean using a soft brush or compressed air. Do not use water to clean the panels.

KNAUFINSULATION

CONTACTS

Customer Service (sales)

Tel: 01744 766 766
sales.uk@knaufinsulation.com

Technical Support Team

Tel: 01744 766 666
technical.uk@knaufinsulation.com



Knauf Insulation Ltd PO Box 10, Stafford Road, St.Helens, Merseyside, WA10 3NS. UK

For more information please visit www.knaufinsulation.co.uk

All rights reserved, including those of photomechanical reproduction and storage in electronic media. Extreme caution was observed when putting together and processing the information, texts and illustrations in this document. Nevertheless, errors cannot quite be ruled out. The publisher and editors cannot assume legal responsibility or any liability whatever for incorrect information and the consequences thereof. The publisher and editors will be grateful for improvement suggestions and details of possible errors pointed out.

challenge.
create.
care.