



**SureSet**  
Resin Systems





## Contents

Why SureSet?	- 4
Why Resin Bound?	- 5
Applications	- 6
Bases	- 7
Design	- 8
Specify	- 9
Installation	- 10
Services	- 11
Colour Range	- 12
Case Study - Commercial	- 15
Case Study - Global	- 16
Case Study - Residential	- 17
Case Study - Trade	- 18
Case Study - Commercial	- 19
Application Insight - Tree Pits	- 20
Application Insight - FlexiSet	- 21
Application Insight - StepRise	- 22
Trade Products	- 23
DIY Products	- 24
21 Year Guarantee	- 25
Testimonials	- 26



## Why SureSet?

We take pride in the fact we offer great customer service along with great products. From start to finish we can offer technical advice, full supply and installation and a 21 year guarantee to complete the service. Our resin bound paving solutions offer natural and recycled materials, unlimited colours, and a design flexibility no other type of paving can match. Unlike many traditional paving systems SureSet is permeable; this means that any proposal including SureSet demonstrates a sustainable approach to water management. As a market leader in permeable resin bound paving, we have the reputation, experience and innovative approach to make any design outstanding throughout the world.

- Durable
- Permeable
- Quick and easy to install
- Unlimited colours
- Flexible design capability
- Low maintenance
- Smooth, hardwearing finish
- Colour stable
- 21 year guarantee

### Smooth Finish with No Loose Stone

Seamless finish ideal for disabled access, children, pushchairs and bicycles.

### Permeable

The voids in SureSet permeable paving allow water to pass straight through. This natural drainage eliminates puddles and contributes to flood prevention. The permeability of SureSet makes it fully SuDS (Sustainable urban Drainage Systems) compliant.

### Hardwearing

Long lasting surface for pedestrian and vehicular areas.

### UV Stable

Offering long term colour stability.

### Low Maintenance

Weed growth is minimal and the

open voids eradicate any standing water. All you need to do is sweep and occasionally power wash your surface.

### Fast Installation

Approximately 250m<sup>2</sup> a day can be laid over many existing surfaces. We can arrange everything from start to finish, providing materials and installation.

### Design Flexibility

Single or multi-coloured curves, circles, patterns and numbers can be achieved just as easily as a straightforward installation.

### Unlimited Colour Range

For creative, innovative designs.

### Reinstatement

Can be successfully patched and repaired with an identical formulation.

### Environmentally Friendly

The installation method is a low energy cold applied process. Thin layer depth (typically, 18mm) minimises raw material consumption. Can remove the need for excavation and replacement of existing hard surfacing.

### 21 Year Guarantee

We can install our paving anywhere in the world and our installations are guaranteed for 21 years against:

- Loose stone
- Cracking
- Oil damage
- UV degradation
- Colour fade
- Frost damage
- Workmanship

### British Board of Agrément (BBA)

SureSet has undergone rigorous testing required to ensure that it is fit for purpose. We demonstrate compliance with industry regulations and our products are tested and certified annually by the UK's leading certification body. Certificate no 20/5719

### SuDS

SuDS is an approach to water management introduced by the Environment Agency. The main principles of SuDS is to mimic natural drainage i.e. allow rainwater to soak back into the ground rather than allowing it to run directly into watercourses.





## Why Resin Bound?

### Resin Bound by SureSet

The popular paving choice known for its permeability, the stone is mixed with a clear resin on site so that each particle of stone is completely coated with the resin. Once the resin and aggregate are fully mixed together they are then applied to the base to give a permeable, smooth and durable finish.

When combined the finished depth of the bound system usually varies between 12mm and 24mm. The specified depth is dependent on the aggregate size in the mix and the application it is being used for. The resin bound system allows the mixing of different sizes and colours of aggregate to give a wide variety of appearances and textures.



	Resin bound	Block paving	Tarmac	Concrete	Crazy paving	Loose gravel	Resin bonded
Permeable	✓	✓	✓	✓	✗	✓	✗
Weed resistant	✓	✗	✗	✗	✓	✗	✓
Frost resistant	✓	✗	✗	✗	✗	✓	✗
Oil damage safe	✓	✓	✗	✗	✓	✗	✓
Slip resistance	✓	✓	✓	✓	✓	✓	✓
Colour stable	✓	✓	✗	✗	✗	✗	✗
Low maintenance	✓	✗	✗	✗	✗	✗	✗
Durability	✓	✗	✗	✓	✗	✗	✗



## Applications

SureSet Resin Systems are available in an endless variety of materials and colours, which are suitable for all applications. We advise discussing each project and application with us individually but here is a guide to our recommended usages.



Vehicular



Pool areas



Tree areas



Pedestrian



Decorative

Size	Natural Aggregates			Crushed Marble			Rounded Marble	FlexiSet	Spectrum	Recycled	
	3mm	6mm	10mm	3mm	6mm	10mm	10mm	6mm	3mm	3mm	6mm
<b>Applications</b>											
<b>Pedestrian Paving</b>	✓	✓	✓	✓	✓	✓	✓	✓	✓	✓	✓
<b>Vehicular Use</b>	✓	✓	✓	✓	✓	✓	✓		✓		
<b>Tree Pit</b>		✓	✓		✓	✓	✓	✓			
<b>Pool Surround</b>	✓	✓	✓	✓	✓	✓		✓	✓		
<b>Decorative</b>	✓	✓	✓	✓	✓	✓	✓	✓	✓	✓	✓



## Bases for SureSet

### Asphalt (also known as Tarmac)

Is the ideal base for SureSet paving. Suitable for all traffic types (depending on build up). SureSet can be laid directly onto an existing asphalt surface or a newly installed one as soon as it has cooled. The asphalt should be installed onto an appropriate granular subbase, of adequate depth to accept the expected weight of use.

### Existing Concrete

All concrete bases should be structurally sound, be primed, and have a crack reduction membrane (CRM) applied before SureSet is installed.

### Freshly-Laid Concrete

A minimum period of 7 days must be allowed before installation of SureSet onto new concrete. The surface should then be primed using a polymer based primer before SureSet is installed. Although SureSet is crack resistant, it will ultimately reflect any crack within the base. Movement joints must be included in the plans, and carried up through the SureSet paving where necessary. A sufficient depth and grade of concrete should be used to withstand the expected loadings in use.

### Crushed Rock

Is an ideal base for tree surrounds, and is suitable for areas of low pedestrian traffic with no vehicular access.

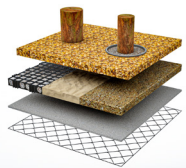
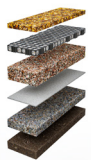
Requires to be built in two layers of 4/20 free draining crushed stone base, and well-compacted to a minimum depth of 100mm. SureSet needs to be laid to a minimum depth of 30mm to compensate for the weaker base.

### SureCell ®

Is a recycled plastic cellular grid structure suitable for pedestrian and light vehicular areas (sub-base dependent). When interlocked and filled loose stone and compacted it creates a permeable and load-bearing base course or stand-alone paving surface. When filled the SureCell has a compressive strength of 400t/m<sup>2</sup>!

As with all groundworks, local, specialist advice must be taken on the subbase requirements for each scheme.

### Typical Base build-ups



For questions about laying onto new or existing surfaces contact SureSet +44 (0) 1985 841 180 or download our specifications from our website.





## Design

Our wide range of colours and textures allows SureSet to blend in with surrounding materials or provide a striking contrast, depending on the creative vision of the designer.

Resin bound paving has proved to be the perfect design solution for an extensive range of projects across the world.

From **schools**, medical centres, **bridges** and hospitals to **private homes** and pedestrian areas, SureSet has brought to life designs of all shapes, sizes and complexities.

We offer solutions for **exterior** applications in a vast range of colours and textures allowing designers to continue their design theme to the outside hardscapes.

Our product also provides designers the opportunity to create **intricate** and detailed **designs** using stencils or metal edging within the surface.

Whether it is a corporate **logo**, a welcome message to visitors or a school emblem, SureSet can be used to create a perfect, **colour-matched** representation of virtually any subject. Providing a unique design signature to any project.

Our highly skilled team of Installers efficiently complete the project with focus on accuracy and attention to detail.

The result is an extremely **durable** and highly **attractive** solution which will keep its colour and good looks for many years to come.

Add the ultimate **'WOW'** factor to your paving!



Contact us with your design. We will then work closely with you to ensure the right solution is achieved.





# Specifying SureSet

If you would like SureSet to provide you with a quotation we will need to know the

- Area size of the area in square metres (m<sup>2</sup>).
- Application type of use.
- Colour or aggregate you require.

## THE PROCESS TO SPECIFY

A SureSet resin bound surface consists of:

- Aggregate  
Natural gravels, crushed rock, marble or recycled materials.
- Crystal clear resin binder which is UV stable and flexible.

SureSet resin bound paving is a cold laid process.

The resin bound aggregate is mixed together to ensure each particle is fully coated in resin, allowing it to bind together when laid.

- Product code  
e.g. L1813/06
- Description  
Nominal size, colour and texture (crushed / rounded) e.g. 6mm Sterling.
- Depth of laying  
e.g. 18mm (dependent on application type).  
Code and descriptions are labelled on the bottom of each sample disc.

Recommended depths of laying are on SureSet specifications.

## TO SPECIFY THE EXACT SURESET BLEND AND DEPTH OF MATERIAL





## Installation

Our Operations Team will handle all the arrangements for your installation; supporting you through the process and doing everything they can to make it as easy as possible for you.

SureSet installations are completed in various ways depending on the type of project. The traditional method has been to install the materials using a hand trowel however in recent years we have developed machinery that will allow for a more efficient and accurate installation such as our Power Float.

### DURING AND AFTER INSTALLATION

Our Installers will work tidily and with respect to on-site regulations and neighbouring properties. All adjacent areas will be protected during the installation to minimise the risk of resin contamination. They will clear up behind themselves and take away any rubbish.

With our large network of Approved Installers and Global Partners, we can install a SureSet surface worldwide.

All Approved Installers/Partners have

- Invested in our training programme
- Skills and experience
- Fulfilled our stringent criteria
- A SureSet Certification



### CURING TIME

- Can be laid in temperatures as low as 0°C.
- Can be laid over existing surfaces.

If you have a project you wish to self install you should consider using the following **DIY and Trade packs, DIY Kits or ProResin** please visit our online shop to browse these products at [www.sureset.co.uk/shop](http://www.sureset.co.uk/shop) or contact [trade@sureset.co.uk](mailto:trade@sureset.co.uk)





## Services

### Installation (supply and Install)

Both nationwide and globally, we offer a full installation service. Your SureSet installation will be carried out either by our Approved Installers or one of our Global Partners. All SureSet approved installations are backed by our 21 year Guarantee.

Request a no obligation quotation online.

### Trade Products

We understand that experienced tradesmen, builders and DIY enthusiasts may not require our installation services and we have developed a variety of self-install options as well as the opportunity to buy resin only 'ProResin' - drawing on the benefits of our resin bound technology and made available to purchase through our online shop.

### Cleaning

We have a full maintenance guide available to download from our website, we also offer a resin bound cleaning service. If you would like to find out more about this, please contact us.



### Approved Installer scheme

Supporting our highly skilled Installation Team is a network of SureSet Approved Installers, who complete projects nationwide along with our Global Partners who work internationally.

### CPD presentations

We offer resin bound CPD presentations covering the manufacturing, mixing and application processes and maintenance.

### Samples

SureSet offer a free sample delivery service, samples can be requested via the website or by contacting the Sales Team.

### Resin bound training course(s)

If you are a looking to widen your services, improve your resin bound skills, learn more about polyurethane resins and use them on projects please consider our training course(s) held regularly throughout the year. The training content is a combination of classroom learning and practical application demonstrations. As part of our membership commitment with FeRFA and best practice, we cover the use of our three part chemically curing resin catalyst system, ProResin, used for resin bound paving installations and available to purchase online to use on your own resin bound projects.

**If you have a project you wish to self install you should consider using the following DIY and Trade packs, DIY Kits or ProResin please visit our online shop to browse these products at [www.sureset.co.uk/shop](http://www.sureset.co.uk/shop) or contact [trade@sureset.co.uk](mailto:trade@sureset.co.uk)**

# Natural Aggregates

## Natural Aggregate

Our most popular colour range providing natural aggregates that are functional and aesthetically pleasing.



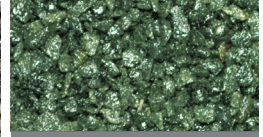
Aztec Gold



Barley Butter



Blue Granite



British Racing Green



Bronze



Butterscotch



Cappuccino



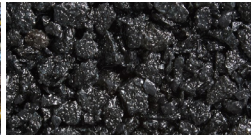
Chestnut



Jersey Butter



Mahogany



Midnight



Milk Chocolate



Ocean Grey



Pearl Jam



Sterling



Sterling Midnight



Tuscan Barley Butter



Tuscan Terracotta



Winter Bronze



Winter Pearl



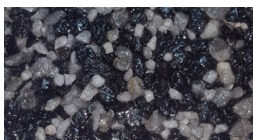
## Luxury Crushed Marble

### Crushed Aggregate

These marble colours are timeless, a truly beautiful material made of traditional marble aggregate.



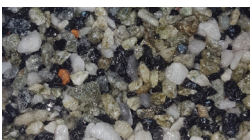
Alpine



Astro Dusk



Astro Peake



Astro Verde



Buttermilk



Forest Green



Popcorn



Safari



Starlight



Sterling Forest



Winter Frost

## Luxury Rounded Marble

### Rounded Marble

The rounded marble exudes further elegance of the traditional crushed marbles available. Suitable for tree pit and decorative use only - do not use on driveways.



Astro Peake



Blush



Buttermilk



Diesel



Forest Green



Popcorn



Winter Frost

# Spectrum® Recycled Glass Range

## Spectrum

A range of spectacular colours, made in-house from recycled glass and colour coated in many primary, glittery, pastel and pearlescent colours.



## FlexiSet

### Recycled

FlexiSet is 50% recycled rubber, 50% 6mm natural aggregate, and resin, delivering the usual environmental benefits associated with SureSet. Suitable for pedestrian use only.



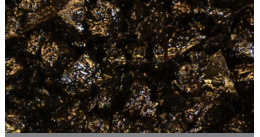
FlexiSet Barley Butter



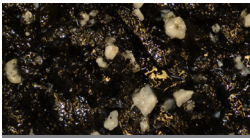
FlexiSet Bronze



FlexiSet Canterbury



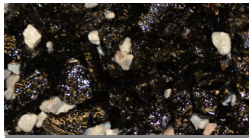
FlexiSet Midnight



FlexiSet Sterling



FlexiSet Terracotta



FlexiSet Winter

## Recycled Materials

### Recycled

Using either waste or by-products these recycled materials include crushed mirrors, 100% recycled glass, and crushed shells.



Bottle Glass



Mirror



Shells



## Case Study

### Swaminarayan Temple, Anoopam Mission, in Uxbridge

Founded in 1987 and what was originally a reasonable sized house with over 14 acres of land, The Anoopam Mission soon became a beautiful Swaminarayan Temple located in a quiet and secluded part of Uxbridge in South Buckinghamshire. It opens its doors to help those who need it the most, without any discrimination of other faiths and the non-religious, of their class, creed, colour or gender. Since 2016 SureSet have been working with the Anoopam Mission alongside MEB Design and Bread Construction to complete their project vision of creating the biggest multi-cultural campus in the United Kingdom.

#### Phase 1

The original scope of the project was to include a total area of 1180m<sup>2</sup> using SureSet resin bound paving materials on the steps and pedestrian entrance to the tranquil Temple. "To see the project through each phase from the original plans to the final resin bound paving on site was incredible. It has been a great experience and a privilege to work on this type of project and we will continue to support Anoopam Mission with their plans." Testimonial by Dave Shell, Head of Operations at SureSet Resin Systems

#### Phase 2

The second phase at the Swaminarayan Campus was originally applied for in 2019 to build a Hindu Crematorium, which is said to be one of the UK's first! Here, the aggregate colours were kept the same for consistency, creating a continuous flow around the new building, it was important to continue the

same colours used on the first phase as it gives a sense of connection. The design of the crematorium building, and its facilities were particularly customised and designed by local Architect Nick Mancini, from Mancini Curran Associates, to meet the needs of the Hindu community.

A fully permeable 14mm open graded asphalt base was prepared by others prior to our arrival. The SureSet team completed a full installation of 717m<sup>2</sup> at a 16mm depth using a hand float and our mechanical methods for the best possible finish. The main colour used was a natural warm red 3mm aggregate, Tuscan Barley Butter. The chosen colour was perfect to feature around the grounds as it matched the red wood window frames and exterior building features beautifully.

The second area of materials SureSet installed was 105m<sup>2</sup> of 3mm luxury resin bound marble, named Buttermilk a light white sand colour. This chosen material was also hand floated to a 16mm depth. It was used in the design as a striking decorative border around the crematorium outlining the buildings shape, blending in well with the surrounding colours which really draws your eyes towards it.

The Anoopam Mission Committee and visitors alike have expressed nothing but pleasure with the outcome and feel the project has been a great success, transforming a piece of residential land into a place for cultural community.





## Case Study

### Stazzona, Italy

Choosing materials for indoor floors require a lot of attention and care, but it is equally important for outdoor ones, especially if they are part of urban design.

The right flooring can make the city more beautiful of course, but also more liveable, and safer, suitable for hosting adequate activities and fitting the needs of the people who live there.

In Stazzona (Lake Como) where the Church of San Giuliano stands, the permeable resin bound paving has redesigned the boundaries between the horizontal space of the square and the panoramic balcony, open to the lake and its beautiful valleys, in order to create an immersive effect into the landscape.

The small village of Stazzona, which enjoys a unique panorama, has promoted the replacement of the existing flooring, made by porphyry blocks, with a continuous and seamless paving, suitable for both pedestrian and vehicular use, with the purpose of connecting the different sides of the square to the adjacent road and then up to the belvedere, which overlooks Lake Como.

Permeable paving has been the ideal solution and perfectly matches the project concept. Permeable paving is continuous and gives the visual perception of gliding over the square throughout the adjacent

street up to the panoramic sidewalk. Placed on an asphalt base, it is a 16 mm thick layer of nice blended 6mm selected aggregates Sienna Yellow and Breccia Aurora.

The surface, with a natural and elegant appearance, has been further embellished by the insertion of 315 square blocks also with permeable resin bound paving. Each block is 15x15cm and made with 1-2mm aggregates in Bardiglio Gray, arranged according to a geometric design. This was conceived by the designer in order to create an association between the interior flooring of the church, which is also black, and the exterior to accompany the movement in the square.

Resistant to atmospheric agents, permeable and draining, with minimal maintenance requirements, permeable resin bound paving is the right choice due to its functionality.

With this project we have achieved the goal: the aesthetics, the quality of the materials, and the skilled HiSkin Installation Team have enhanced the architectural and landscaped identity of the area. In some way our permeable paving will be connected emotionally (at least for the next 21 years of guarantee) to the people who will admire that wonderful panoramic view from Stazzona balcony.





## Case Study

### Church Farm, Rode

A pleasant array of new luxury, low carbon countryside homes were built in the beautiful Somerset village of Rode. The new homes were completed using local naturally quarried Cotswold stone. The development at Church Farm near Babington materials and House offers the best of traditional West Country craftsmanship with the highest standards of modern architectural design. The homes at Church Farm are distinctively individual, with elegant architectural features that bring a sense of longstanding community. Built in natural limestone, designed to weather gently over the years, Church Farm needed a paving system that could match the homes features as well as aesthetically blend into the surrounding landscape.

The Award winning housing developers, Autograph Homes, considered every detail of their designs and was to include a sustainable paving source, they wanted to create a generous size resin bound access road that provides a relaxed, natural feel to welcome residents to their home but also incorporated some texture using traditional cobble setts to break up certain areas.

SureSet resin bound paving is typically a hand-laid, smooth, and fully permeable external paving surface. The chosen material of resin bound was SureSets popular blend '6mm Barley Butter' designed exclusively for the development to withstand vehicular access traffic, including the occasional refuse lorry and regular foot traffic. The

stylish modern paving system met the ethos of Autograph Homes which is to make a difference with their designs by combining sustainable energy systems with intelligent use of space and structure, offering homeowners a lifetime of savings.

The client requested a full supply and installation service of our high-quality range of paving that always includes a 21-year Guarantee. To complete the works Valletta Surfacing Ltd were contracted to install the 1,257m<sup>2</sup> of SureSet paving onto a tarmac base, as per our specification advice. The resin bound paving was laid to a maximum 20mm depth using our 6mm Barley Butter BBA approved permeable resin surface course.

Whether you are a specifier needing a full installation by our skilled teams or a tradesman wanting to use self-install options, SureSet supply you with high-quality products and excellent customer service.

SureSet have been working with designers, contractors and homeowners installing resin bound paving since 1997. SureSet paving is suitable for new build and refurbishment projects, providing a fully permeable surfaces that allows water to freely drain through the paving.



## Case Study

### Manor Gardens, Wiltshire

Located in a small town close to the popular holiday destination Centre Parcs, Longleat Forest in Wiltshire, an owner of a tired, south-facing residential patio area wanted to transform the back garden of their detached property with resin bound aggregate.

Removing the old sandstone slabs was a task too large for the homeowner and would exceed the overall budget available for the rejuvenation. After careful consideration and various movement checks of the 15-year-old paving slabs, the homeowners opted to use our Natural Aggregate DIYPack to overlay their pre-existing slabs. SureSet's 6mm Cappuccino material was chosen from the Natural Aggregate Range supplied by Long Rake Spar.

An added feature of a StepRiser in a subtly contrasting colour, to allow easy access through the properties french doors onto the sleek patio area was installed and finished with a step edging strip using the colour 'putty' from Dural's edging range.

Their installation started out with preparing the slab base with a crack reduction membrane (CRM), removing the ACO drain covers and masking off any brickwork and exposed edges. Once the weather warmed up and the morning fog passed the first batch of material was mixed,

wheelbarrowed to the far corner of the patio and hand floated to a level 18mm depth, all of these tools were bought from our online shop. The manholes were also covered with resin bound and a bespoke rotary ailer cover was created to prevent a horrid hole which would be left if the washing stand was not in use on a windy day!

"I can highly recommend this company and their online products. I wanted something to replace my patio slabs that would look sleek and clean, I am glad I used this product.

The company were professional, with good communication and answered any questions I had before buying online. The materials arrived on time, and all correspondence was professional – 5 stars from me, very happy." Homeowner

Over a year later the owners are extremely pleased with how the material looks and performs in the rain!





## Case Study

### Brendon Court, Bath

The University of Bath is one of the leading universities in the UK, located in Claverton Down on the East side of Bath, it is known for its excellence in teaching and research. As a result, the university attracts a large number of students from all over the world. With an increasing number of students enrolling in the university, there was a growing demand for quality accommodation facilities that met the needs and preferences of the students.

In response to this growing demand, the University of Bath decided to construct a new student accommodation building that would provide students with a comfortable and convenient living experience. Brendon Court was the result of this initiative.

Brendon Court is a student accommodation complex is made up of 113 flats, which are home to 126 first year undergraduate students who are living on campus.

In the centre of Brendon Court is a communal area which also acts as an access way. The key functions of the area are that it needs to be accessible, easy to maintain and provide a place for students to sit and enjoy the outdoor space provided.

Main Contractor K P Wilton & Son Ltd from Bristol contacted SureSet as resin bound paving was a perfect solution for the project. Using a reputable product and contractor is a very important part of creating these commercial jobs and our 26 years of expertise was exactly what the customer was looking for.

The areas were installed with a permeable asphalt base (laid by others). Having a permeable base provides a fully draining build up to ensure water can completely flow through to the natural drainage table below with no standing water. The correct base provides a stable foundation for the resin bound paving to be installed on top.

Subcontractor and Approved Installer of SureSet; Bruce Lovelock was on site to prepare the area and mark out the batches for the permeable paving. 6mm Barley Butter was chosen from our Natural Aggregate Range, as one of our most popular colours it blends perfectly with its surroundings.

The implementation of the resin bound paving proved to be a successful solution. The new pathways not only enhanced the aesthetic of the complex but also provided a durable, low maintenance and safe surface.



## Application Insight - Tree Pits

### Resin Bound Tree Pits

Tree pits are often an easy target for casually discarded litter, requiring disproportionate time and effort to keep these areas in pristine condition.

Our permeable resin bound tree pits need little maintenance, enhance the environment, eliminate the need for unsightly and costly metal grilles and are much less likely to be vandalised.

The unique resin bound structure maximises the voids between aggregate particles, allowing air flow and water penetration whilst remaining tough and durable yet with enough flexibility to allow for growth.

### SuDS Compliant

SureSet is fully SuDS compliant and therefore is often the first choice for Councils as a tree pit solution. Our permeable surfacing allows water to return to the natural water table. With issues surrounding flooding and pollution, a permeable surface is becoming essential.

### Non Harmful to Plants

All SureSet products cure as an inert material, meaning that they are environmentally friendly and of no danger to plants.

PH values will remain unchanged by SureSet and our tree surrounds can often act as a filter layer protecting the underlying soil from contaminants.

### Heat Reflective

SureSet can be heat reflective and its voided structure allows for the absorption and evaporation of moisture combating the Heat Island effect.

### The benefits of a SureSet resin bound tree pit include:

- Easy to maintain
- No loose stone
- Nowhere for rubbish to collect
- Reduces the opportunity for weeds to grow
- Covered by our 21 year guarantee when installed by SureSet, an Approved Installer or Global Partner.

Alternatively, FlexiSet can be used around trees, it is a blend of 50% recycled rubber, 50% 6mm natural aggregate and resin, delivering the usual environmental benefits associated with SureSet.





## Application Insight - FlexiSet

FlexiSet offers a rustic natural finish for any resin bound surface.

Made from 50% recycled rubber, 50% 6mm natural aggregate and our unique resin formula, FlexiSet delivers all the usual environmental benefits associated with SureSet.

The unpolished look and inherent flexibility of FlexiSet makes it ideal for:

- Woodland trails
- Jogging paths
- Pedestrian areas
- Cycle tracks
- Equestrian centres
- Drainage channels
- Golf courses
- Tree pits

### Why choose FlexiSet?

- It's economical
- It's environmentally friendly
- It's lightweight
- It's flexible
- It's permeable

Suitable bases include concrete, asphalt, well-compacted stone and SureCell.

Made from shredded bus and truck tyres, the recycled rubber itself is black, but by adding natural aggregate to the mix we can bring colour to the surface.



SureSet FlexiSet resin bound paving helps improve the issues of drainage and surface water and addresses the irregularities of trees root levels.

See our full range of colours on our website.

**If you have a project you wish to self install you should consider using the following DIY and Trade packs, DIY Kits or ProResin please visit our Online shop to browse these products at [www.sureset.co.uk/shop](http://www.sureset.co.uk/shop) or contact [trade@sureset.co.uk](mailto:trade@sureset.co.uk)**



## Application Insight - StepRise

StepRise, is the answer to installing resin bound paving vertically to deliver a complete step solution.

The StepRise is available in three formats: standard, standard cut to size and custom. They are also available as Supply Only or Supply and Installation.

### Standard StepRise

Size: 1200mm x 200mm x 12.5mm  
Mix type: General use  
Stone size: 3mm

### Standard StepRise cut to size

Details as above but cut to your required size - a maximum two straight cuts with additional cuts available on request.

### Custom StepRise

Size: Customised to your requirements (up to max 1200mm x 600mm x 12.5mm)  
Mix type: General use  
Stone size: 3mm

Our standard and custom StepRise are available in the following colour options:

- 3mm Natural Aggregate
- 3mm Crushed Aggregate
- 3mm Marble
- 3mm Spectrum®

### Additional information:

The lead time for StepRise is approximately 2 - 3 weeks (depending on colour and amount ordered).

We also supply Step Nosing (1.2m), end caps and mastic tubes. SureSet StepRise is available in Supply Only and Supply and Install options.

If you have a project you wish to self install you should consider using the following DIY and Trade packs, DIY Kits or ProResin please visit our Online shop to browse these products at [www.sureset.co.uk/shop](http://www.sureset.co.uk/shop) or contact [trade@sureset.co.uk](mailto:trade@sureset.co.uk)



## Trade Products

Whether you've worked with Resin Bonded Paving and want to broaden your skill set, wish to branch into Resin Bound or simply would like to Do It Yourself, there are various resin bound self-install options.

**1. ProResin**, ProResin UVR is a 2-part resin combination with a separate catalyst to provide the installers with full control over the curing process. This resin is UV stable and will not yellow overtime when exposed to sunlight.

ProResin Non-UVR is a 2-part resin combination with catalyst included. This type of resin will yellow overtime when exposed to UV and therefore is best to be used with darker shades of aggregate for minimal change in appearance.

ProResin blends are designed to be used in a forced action mixer by skilled and experienced tradesmen; this ensures a consistent and even mix of resin and aggregate required to deliver a smooth, permeable surface giving the end user a superb finish using a high-quality product designed to last longer than the majority of alternative systems available.

When mixed with dried aggregates using our supplied recommendations and instructions, a fully permeable Resin Bound Paving solution is created. We can suggest blends and suppliers if you are not confident in using your own.

**2. TradePack**, TradePack is a self-install product and commonly used for access roads, public footpaths or hard landscape areas. Using the same aggregate and resin technology designed and developed since 1997, SureSet resin bound TradePacks make an excellent choice for contractors looking to self-install.

A TradePack consists of the exact ProResin and aggregate blend required to cover the required area, available in 15m<sup>2</sup> and 30m<sup>2</sup> sizes when laid at an 18mm depth. SureSet catalyst is separate to the resin to give full control over curing time.

Designed only to be used with a forced action mixer which are commonly used within the resin bound trade.

**For more information on our Training course, ProResin or self-install packs, please visit our website [www.sureset.co.uk](http://www.sureset.co.uk) or contact our Trade Team [trade@sureset.co.uk](mailto:trade@sureset.co.uk)**





## DIY Products

If you are a DIY enthusiast, we have self-install permeable resin paving for your own residential projects. All our self-install, DIY, products are supplied with high-quality resins that are UV stable and aggregates that are washed, dried and bagged with quality checks.

**1. DIYPacks,** A DIYPack has been designed with homeowners in mind and is for all hard landscapes such as footpaths, patios, and driveways. Packs come in convenient sizes of either 15m<sup>2</sup> or 30m<sup>2</sup> along with everything you need to complete an installation: resin, aggregate, mixing tools and full instructions.

Easy to mix and install, homeowners can create their own resin bound surface to complement their surroundings. The fully permeable surface will prevent puddling and standing water meaning you can enjoy your paving all year round.

**2. DIY Kit,** DIY Kits are designed with the user in mind and are ideal for small areas or intricate paving projects, even if incorporating into a larger design, such as a house number or company logo or into larger pathways and driveways.

No experience is required and without the need for expensive cutting or laying equipment our DIY Kits are easy to use and cover 1m<sup>2</sup> (supplied in 2 buckets) to be installed at a minimum 16mm depth

and available in various colour ranges. Kits come complete with resin and aggregate and detailed instructions that guide you through preparation, mixing and laying process.

**3. Maintenance Repair Kit,** In addition to the DIY Kits, we have developed a Maintenance Kit. With enough specially formulated resin and aggregate to complete approximately 0.1m<sup>2</sup> at a 16mm depth, these kits are ideal for designs, small repairs or could even be used as a tester kit.

All of our DIY products come with full instructions and accessories needed, however, if you don't have tools or equipment required to install resin bound paving, everything is available to purchase directly on our online shop, or you can contact our team for assistance.

**DIY Products can be purchased directly on our online shop [www.sureset.co.uk/shop](http://www.sureset.co.uk/shop)**



## 21 Year Guarantee

SureSet is dedicated to providing the highest possible service with the highest quality product.

The design technology of our resin bound paving system gives us the confidence that, when installed in accordance with our quality standards, SureSet is a hard wearing durable surface which can withstand light pedestrian to vehicular access, easily coping with the stresses of power steering and heavy axle loads.

Our permeable resin bound paving installations are fully guaranteed for 21 years from the date of application against:

- Loose stone
- Cracking
- Oil damage
- UV degradation
- Colour change
- Frost damage
- Workmanship\*

\* **Workmanship** is covered when supplied and installed directly by SureSet.

When installed under an Approved Installer or Global Partner the workmanship provided is covered directly by them. We provide all Approved Installers and Partners a material only guarantee.

The guarantee is conditional upon a suitable base being used, and the advice in our Aftercare and Maintenance Guide has been followed.

Materials supplied under Trade or DIY are not covered under the SureSet 21-year Guarantee.

### Usage

SureSet surfaces are intended to be used by normal pedestrian or vehicular traffic for which they have been designed. Protection should be provided against abnormal usage.

### Routine Maintenance

Keep the SureSet surface regularly swept clean with a stiff broom and hose with clean water.

There is a full maintenance guide available to download from our website. SureSet also offer a professional cleaning service, please contact us to arrange this service.

### Washing

Washing can be carried out using a portable pressure washer to remove dirt, grime and moss.





## Testimonials

We are delighted! Everyone at the school is thrilled as were the parents and children when they returned to school after the holidays! What a transformation! Everything was left clean and tidy in a prompt manner. It was a pleasure to work with you and your team.

**Ali - Chilton Foliat Primary School**

"I just wanted to let you all know at SureSet how absolutely delighted I am with the new patio you laid for me last Saturday.

As you know I was sent help from Blind Veterans to help with my garden as it was deemed dangerous due to my sight loss. The loose gravel outside the patio doors (the only access to my garden), caused particular concern and recently I fell and cracked a couple of ribs negotiating my way through the doors. Now stepping onto the smooth safe patio, makes such a difference, especially when I am holding a glass of wine!

Your kindness and hard work is appreciated."

**Lynette Elliott - Homeowner**

Very impressed with service and product. Initial laying was a learning experience but when used to product it became much easier.

**DIY Kit Customer**

I can highly recommend this company and their online products. I wanted something to replace my patio slabs that would look sleek and clean, I am glad I used this product. The company were professional, with good communication and answered any questions I had before buying online. The materials arrived on time, and all

correspondence was professional – 5 stars from me, very happy.

**Mr. Philp - DIYPack customer**

SureSet were committed to ensuring that the best-finished product was achieved, on a project where precision was paramount. Professional, helpful, and polite throughout, from concept to aftercare.

**Max Harriman from Tom Stuart-Smith Ltd**

Thank you so much for the Kits they were brilliant to use - genuinely DIY. We had been a bit worried about how it would go but Simon positively enjoyed himself laying them and said it was quite therapeutic! They will be perfect for us at Chelsea Flower Show, the resin bound looks clean, smart, and professional and gives the space an upmarket finish which is what we really needed.

**Paul Richardson from Steel Sculptures Ltd**

Exceptional resin bound product. Tried many suppliers over the years but SureSet is the strongest UV resin by far. Great staff knowledge and very fast transactions and delivery of goods.

**ProResin customer**

SureSet UK have provided a very good service at a small development in Croxley Green in Hertfordshire. It was correcting some bad drives that had been installed by others and the way in which they carried out the work on occupied properties was also impressive.

**Kebbell Homes Development Limited**



## FREQUENTLY ASKED QUESTIONS

### **Is SureSet resin bound paving BBA approved?**

We are a British Board of Agrément certified business 20/5719.

### **Do you have an accredited CPD presentation?**

SureSet offers an approved CPD Certification Service. Providing professionals with the ability to develop and enhance their knowledge of permeable resin bound paving systems.

### **How do I specify SureSet?**

We are partners of NBS Source and have further information on our website.

### **How much does a SureSet surface cost?**

Each project is priced individually depending on the location, size of area, application type and aggregate choice. Contact us at [sales@sureset.co.uk](mailto:sales@sureset.co.uk) with this information and we can provide a quotation.

### **Can heavy vehicles drive over SureSet?**

SureSet is suitable for use in car parks and access roads and can be driven on by lorries and maintenance vehicles.

### **Is the resin toxic?**

No. Once installed SureSet is an inert material.

### **How is it permeable?**

SureSet is carefully mixed to ensure each particle is well bound to its neighbour whilst allowing the maximum void space between them for drainage.

### **What depth is it normally laid at?**

The depth of SureSet will vary for each project, this depends on the type of application and the size of the aggregate used. Typically the depth of SureSet is approximately 18mm.

### **Can I lay it myself?**

Trade and DIY Packs including ProResin are available for self-install projects. DIY kits are perfect for smaller areas. We recommend using a SureSet Installation Team for larger projects.

### **How long does it take to cure?**

SureSet resin bound paving is suitable for use after six to eight hours for pedestrians and 12-16 hours for vehicles. For heavy vehicular use, we recommend 24 hours to ensure the surface is fully cured.

### **Is it easy to clean?**

Yes, SureSet is low maintenance. Regular sweeping and the occasional power washing is recommended to keep it looking fresh.

### **How long will it last?**

SureSet comes with a 21 Year Guarantee when installed by a SureSet approved contractor (Trade and DIY products are not covered by the guarantee), however, the resin technology suggests it will last in excess of 25 years.

### **Can I use the resin with aggregate I already have?**

In principle yes, although this would not be covered by our guarantee and any aggregate would need to satisfy our minimum quality standard. If you would like to discuss this further, please contact us.



SureSet, specialise exclusively in Resin Systems for Permeable Resin Bound Paving, manufacturing, supplying, and installing high quality resin systems since 1997.

With the support of our network of Approved Installers and Global Partners resin bound projects are being professionally installed anywhere in the world.

By combining our superior clear resin and premium quality natural aggregate, marble, and recycled materials we offer you the highest quality resin bound paving system that is permeable, durable, UV stable, accessible, easy to maintain, and SuDS compliant.

Keep up to date with the latest news from SureSet via our social media and by visiting our website.



**SureSet UK Ltd**

32 Deverill Road Trading Estate  
 Sutton Veny  
 Warminster  
 Wiltshire  
 BA12 7BZ  
 United Kingdom

**T: +44 (0)1985 841180**  
 E: [mail@sureset.co.uk](mailto:mail@sureset.co.uk)  
[www.sureset.co.uk](http://www.sureset.co.uk)