



SMARTair™ Introduction



- SMARTair™ is Access Control **without** wires
- Flexible control of users
- Complete audit trail
- Multiple combinations to suit all applications
- Simple single door applications to full global networked solutions
- Battery powered convenience or local power controlled
- Closed and encrypted system architecture to ensure high level security at all times
- Integrates with full range of mechanical locks and cylinders saving time and money



Why SMARTair™?



SMARTair™ vs mechanical key systems

What happens in an installation when a key gets lost?

Security is lost:

- The lost key can still open the door.
With SMARTair™ lost card can be deleted from the system by just encoding a new card.
- Keys can be copied.
SMARTair™ user cards are encrypted
- If the master key is lost, the security of the whole system is compromised.
With SMARTair™ the new card cancels the previous one, even if it is the master card or not.
- Mechanical cylinder security structure and technology is well known by many manufacturers, ironmongers...
SMARTair™ technology, encryption and design is under patent.

Installation needs new key(s) & cylinder(s).

- Now the installation is depending on the provider

- Delivery time.

With SMARTair™ just encode a new credential to override the lost one, no change to hardware, no delay.

SMARTair™ works with a wide variety of cards widely available in the market and cards are cheaper to replace than coded keys.

What happens when a “new user” needs to be added to the system?

Installation needs an exclusive new key.

- Unless it is a copy of an existing key, it could prove highly difficult to add new user due to differ restrictions on a mechanical system.
SMARTair™ accepts 65,000 users per installation.
- Users possibly need to carry more than 1 key to access several doors.
With SMARTair™, users only need the 1 card that could operate several doors including access to vending machines etc.

Why SMARTair™?



Installation needs a new cylinder

- Unless it is a copy of an existing key, it could prove highly difficult to add new doors/cylinders due to different restrictions on a mechanical system.
SMARTair™ accepts 65,000 doors per installation.
- User could be forced to carry a new key to open this door.
SMARTair™ allows you to open new doors with the existing card.

What happens when there are changes to the privileges of a user?

- Difficulties to manage, new key needed.
With SMARTair™ previous card is still valid.

...And even more with SMARTair™

- Allows to manage time and calendar privileges (impossible with keys!).
- Add, delete users easily.
- Cards are cheaper than keys!
- Change privileges of users (no flexibility with keys & cylinders!)
- Records events on its memory. Know who, where and when.

Why SMARTair™?



SMARTair™ vs wired online access control

Different types of modules

Several different expensive modules

- Reader module
- Control unit
- Electrical blocking element
- Power supply

SMARTair™ is a compact solution, just 2 economic electronic handles have it all!

Wire all modules and door lock.

SMARTair™ is wire free!

How can I install a wired access control on an existing door

- If it is a fire door installing a wired system could compromise the fire door certificate
- It could be necessary to dismount the door which could compromise the complete security.
- The lock might need changing.
- Expensive

Install and connect control unit.

- Sometimes it is not feasible to hide it
- SMARTair™ has all the electronics and blocking mechanisms on the inside!

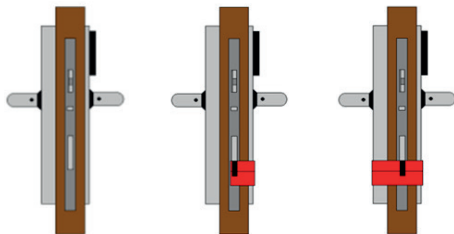
Why SMARTair™?



What happens when communication is lost or power supply is down?

• Door is blocked, or unlocked. No control at all.
With SMARTair™ each door works offline not depending on communication.

SMARTair™ escutcheon can be installed with a mechanical override cylinder which can be used in case of emergency or battery failure.



Long plate

Visible
cylinder

Hidden
cylinder

...And even more with SMARTair™

- Easy to install, Just 2 electronic escutcheons along with a mechanical lock case.
- Simple programming
- User friendly software and management
- Cheaper than most of the online wired systems in the market
- Design:

Architects are no longer forced to leave away the ergonomic and artistic design from doors that require electronic control.

Narrow design permits installation in all kinds of aluminium and narrow profile doors

Different models

SMARTair™ – Door Locking Devices



SMARTair Wall Readers

- * To operate any electronic locking device, automatic doors/barriers
- * Locally powered (12-24V AC/DC)
- * Same functionality of a SMARTair escutcheon
- * Different styles: Standard, Narrow style and with Keypad



SMARTair Escutcheons

- * For installation with a mechanical mortise lock
- * For wooden or metallic doors
- * RFID or Keypad
- * Powered by batteries



SMARTair Knob Cylinders

- * Euro/Scandinavian/Mortise cylinders
- * IP55 – for Internal Installation
- * Temperature Range: from 0°C until +70°C
- * Powered by batteries



SMARTair E-Motion (for cabinets)

- * For installation with a mechanical mortise lock
- * Same electronics as the SMARTair escutcheon
- * Full access control capacities: user ID, time zones, audit trail etc.,
- * Powered by batteries



SMARTair™ – Credentials



■ Technologies:

- Mifare (all new installs will be Mifare)
- iClass (Special order)
- Desfire (Special order)
- Skidata (Special order)

■ Credential types:

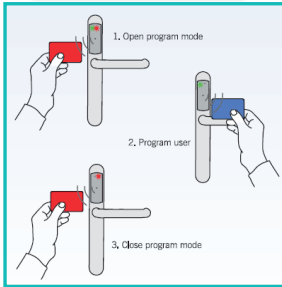
- Cards
- Tags
- Silicon wristbands
- Stickers
- SynerKey



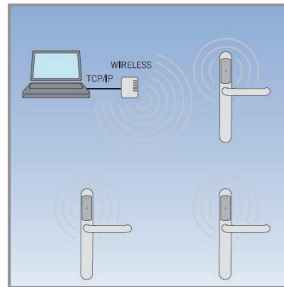
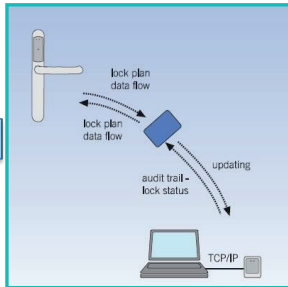
SMARTair™ System – Types



Standalone

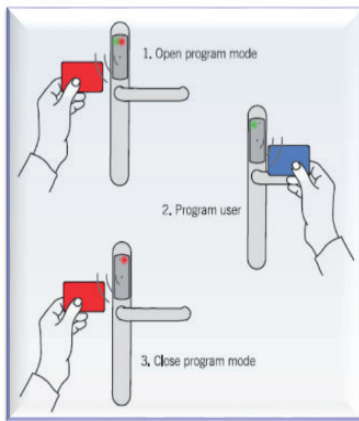


Update-on-Card



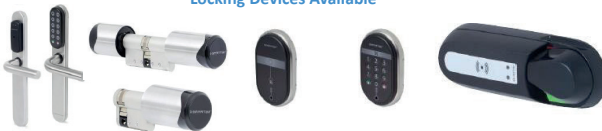
Wireless

SMARTair™ – ‘Standalone’



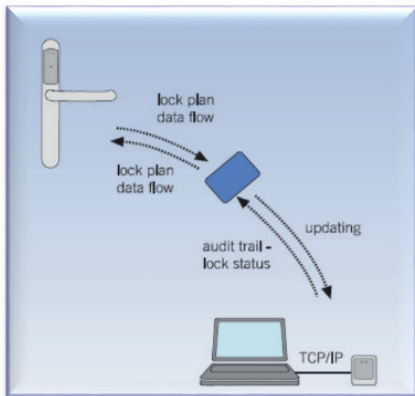
- No Software and/or Programming devices required.
- Programming done through one Programming Shadow Card.
- Simple functionality: add or delete card users.
–Up to 500.
- No audit trail / No time zones / No Calendar, etc.
- Optional: Users with Passage functionality

Locking Devices Available



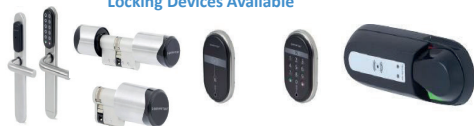
Programming Shadow Card

SMARTair™ – ‘Update-on-card’

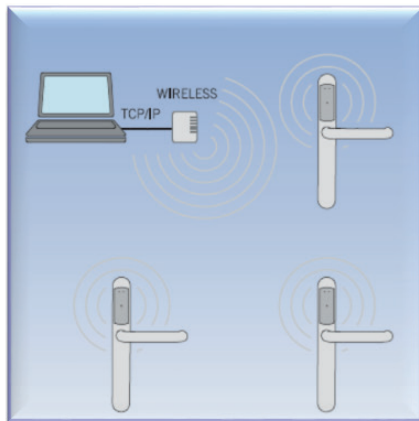


- The memory of the lock has all information to decide if the user has access right to open the door or not.
- The read & write functionality of the credential (card or fob) allows for updates to be applied
- Through the user's credentials we can:
 - Collect the audit trail from the locks.
 - Modify the memory of the locks to change access rights of the users.
- User credentials are updated via local wall mounted devices or via the card encoder
- The users carry the data so the system administrator doesn't have to

Locking Devices Available



SMARTair™ – ‘Wireless’



- Same functionality as in the Off Line / UOC
- The memory of the lock has all information to decide if the user has access right to open the door or not.
- All information between the PC and the locks is transmitted wirelessly through the IP HUBs including user data and real time audit trails
- Each IP HUB wirelessly communicates with up to 30 Locks, with a 30m range between HUB & locks
- If communication is lost the locks will operate in off line mode without any security risk
- Full remote control including remote unlocking and blocking of doors
- Total global solution across multiple sites regardless of location

Locking Devices Available



Software



Programming Device











Encoder



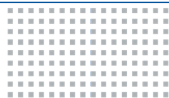
HUB

SMARTair™ – ‘System Overview’



	Stand Alone	Offline	UOC	Wireless
Programming				
Audit Trail				





ACCESS CONTROL
AHEAD OF ITS TIME



SMARTAIR™