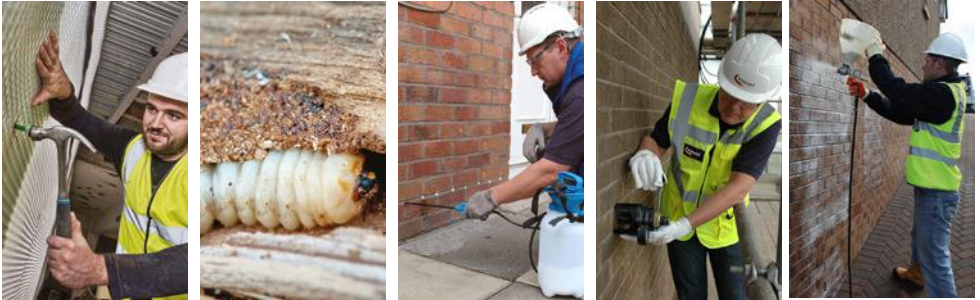




# THE ULTIMATE BUILDING GUIDE



# DAMP STRUCTURAL WATERPROOFING TIMBER TREATMENT CONDENSATION



**A SOLUTION FOR EVERY PROBLEM**



**Basement  
Waterproofing  
ASSOCIATION**



# WYKAMOL

MARKET LEADER IN PROPERTY RENOVATION AND REPAIR

For over 80 years the Wykamol Group has been the market leader in the field of property renovation and repair. Starting way back with our founder devising a chemical treatment for the eradication of insect attack in timber, our product range has evolved and grown to become the broadest range of property repair and renovation solutions under one umbrella anywhere in the UK.

Our unrivalled range includes products for use in basement waterproofing, damp treatment, gas proofing, wood preservation and protection, cellar conversions and tanking.

Such is the strength of our name, Wykamol products are now distributed and used throughout Europe, Africa, the Middle East and Australia.

**Access to Some of the Best Technical Advice in the UK**  
Supporting our customers at every stage is something that we pride ourselves on at the Wykamol Group, and our Technical Support, in particular, is second-to-none. We offer a bespoke design service across 3 sectors of the Construction Industry: Damp and Timber, Structural Repairs and Structural Waterproofing.

To coincide with this service we also offer regular theoretical training courses to Contractors, Architects and Engineers, to ensure everyone in the industry is kept informed regarding new building legislation and best practice.

The Wykamol Group employ staff from various technical backgrounds including Chemists, Surveyors and Structural Waterproofing Specialists who are all on hand to provide

technical advice and training. In addition, Wykamol have an ongoing programme of continual staff development and were recently the proud winners of the Property Care Association staff training award.

**Access to State-of-the-Art Facilities**  
The Wykamol Group's wide-ranging facilities, including a £2 million powder plant and state-of-the-art laboratory, not only aid the development of our innovative products, but our highly qualified Chemists regularly perform sample analysis on behalf of Contractors. Detailed reports are completed to aid in the identification of remedial issues which may be difficult to diagnose. Sample testing removes the need for guess work, ensuring the correct solution is identified from the start of a project, saving time and money.

In 2018 we invested a further £2.5 million in a membrane extrusion plant, allowing us to manufacture Type C Cavity Drain Membranes in the UK. The extruder uses the latest in technology to mould 100% virgin HDPE into waterproofing and damp-proofing membranes, which are now used across the UK in hundreds of renovation and new build projects.

**Please contact us if you would like any technical help.**



- 02-03
- 04-29
- 30-33
- 34-45
- 46-69
- 70-71

- INTRO & CONTENTS
- DAMP PROOFING
- TIMBER TREATMENT
- STRUCTURAL
- WATERPROOFING
- TRAINING

# RISING DAMP SOLUTIONS



Rising damp is a common problem in older properties. In the majority of cases a remedial damp proof course is a cost effective way of resolving your rising damp problem with minimal disturbance.

## ULTRACURE<sup>®</sup> 380ML KIT



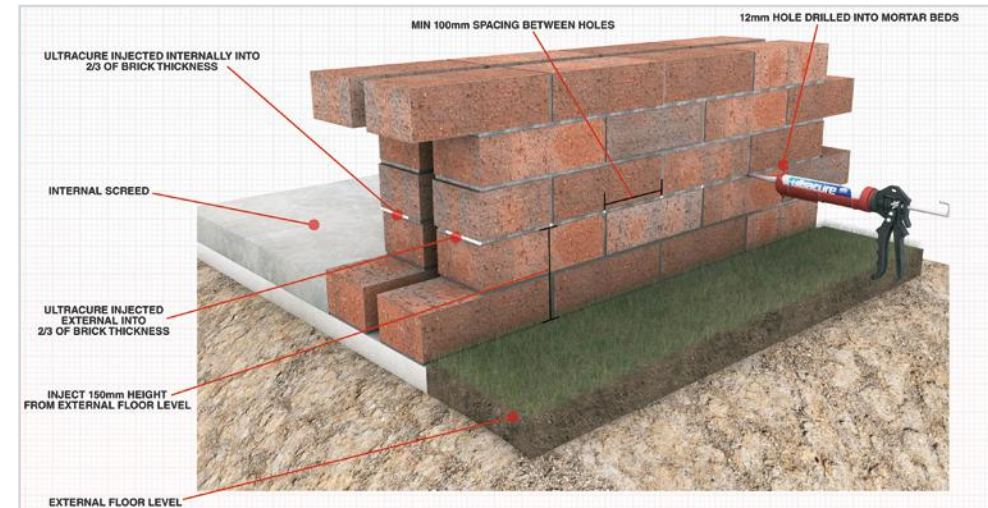
### ULTRACURE<sup>®</sup> DAMP PROOF CREAM THE ULTIMATE CURE FOR RISING DAMP

Ultracure<sup>®</sup> is one of the leading products on the market for the control of rising damp. The unique silicone emulsion cream is injected into the masonry wall to form a barrier, protecting your walls against harmful salts and damp. Ultracure<sup>®</sup> can be used in conjunction with No More Damp Mesh Membrane Kit and Renderproof or Renovation Plaster.



- Effective for at least 20 years
- BBA approved
- No high pressure injection pump needed
- No pump cleaning between jobs
- Can be used in conjunction with dampstop mesh membrane kit
- Finish with renderproof or renovation plaster
- Easy, fast and clean installation
- Virtually odourless
- Can be used in all types of masonry
- Precise dosing
- Low hazard

## NEED ADVICE?



Use the diagram above to help with your Ultracure<sup>®</sup> application. Always refer to the Technical Data sheet available on our website or scan the barcode above to watch our installation video!



- KIT INCLUDES:**
- 8 x 380ml of Ultracure<sup>®</sup> Heavy duty Applicator Gun
  - 1 x 12mm x 250mm SDS drill bit
  - 1 x 12mm x 160mm SDS drill bit
  - 1 x disposable gloves
  - 1 x Extended Nozzle
  - User Guide
- This kit contains everything you need to complete a highly effective damp proof course. Some items are also sold separately.

PRODUCT DESCRIPTION	CODE	PACK SIZE	TYPICAL COVERAGE
Ultracure Complete Kit	ULTRA380MKIT	KIT	1 x 380ml Ultracure covers: 115mm brick thickness = 3.4 linear metres 230mm brick thickness = 1.75 linear metres
Ultracure Individual Cartridge	ULTRA400	380ml	
Ultracure 380 Gun ONLY	ULTRAGUN	1	

# RISING DAMP SOLUTIONS

Rising damp is a common problem in older properties. In the majority of cases a remedial damp proof course is a cost effective way of resolving your rising damp problem with minimal disturbance.

## ULTRACURE® 1 LITRE KIT



### KIT INCLUDES:

- 8 x 1 Litre Ultracure®
- Heavy duty Applicator Gun
- 1 x 12mm x 250mm SDS drill bit
- 1 x 12mm x 160mm SDS drill bit
- 1 x disposable gloves
- 1 x Brass Nozzle
- User Guide

This kit contains everything you need to complete a highly effective damp proof course. All parts are also sold separately.



## 1 LTR CARTRIDGE GUN & BRASS NOZZLE



### KIT INCLUDES:

- Heavy duty Applicator Gun
- User Guide

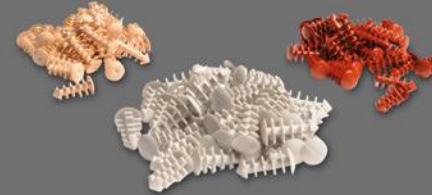
A heavy-duty Applicator Gun and Brass Nozzle for use with the Ultracure® 1 Litre cartridge. The spring and trigger mechanism makes application easy and mess free.

1 Litre tubes sold separately.



PRODUCT DESCRIPTION	CODE	PACK SIZE	TYPICAL COVERAGE
Ultracure 1 Litre Individual Cartridge	ULTRA 1	1 LITRE	
Ultracure 1 Litre Complete Kit	ULTRA1MKIT	KIT	1 x 1 Litre Ultracure covers:
Ultracure 1 Litre Gun and Brass Nozzle in a box	ULTRA1GNKIT	KIT	115 mm brick thickness = 10 linear metres
Ultracure 1 Litre and Plastic Nozzle	ULTRA1 + NOZZLE	KIT	230 mm brick thickness = 5 linear metres
Ultracure 1 Litre Gun Only	DRYGUN	1	

## INJECTION PLUGS



These plastic plugs seal injection holes after the application of an Ultracure® DPC. The injection plugs create a colour matched seal removing the need to cover holes with sand and cement.

PRODUCT DESCRIPTION	CODE	PACK SIZE
Brown Injection Plugs	IP12MMSTONE	100
Grey Injection Plugs	IP12MMGREY	100
Rustic Red Injection Plugs	IP12MMRUSTIC	100

## ULTRACURE® 600ML FOIL



The Ultracure® 600 ml foil sausage is easy to transport and perfect for smaller volume projects. Ultracure 600 ml Applicator Gun and Nozzle Kit is needed for application.



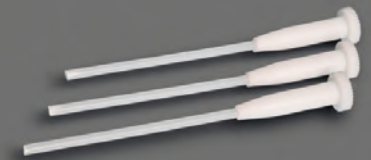
## 600ML APPLICATOR GUN



A heavy-duty Applicator Gun and Nozzle for use with the Ultracure® 600 ml foil sausage. This Applicator Gun is made for precision and helps to reduce wastage. 600 ml foil sausage sold separately.

PRODUCT DESCRIPTION	CODE	PACK SIZE
Ultracure 600ml Foil Sausage	ULTRA600	1
Ultracure 600ml Gun & Nozzle	ULTRAGUN+NOZZLE	KIT
1 x 600 ml covers: 115 mm brick thickness = 6 linear metres		
1 x 600 ml covers: 230 mm brick thickness = 3 linear metres		

## EXTENDED PLASTIC NOZZLE



Ultracure extended plastic nozzles are available to fit both the Ultracure 380 ml and the Ultracure 1 Litre cartridges.

- Easy to clean out.
- Allows for precise application.
- Helps prevent wastage.
- Can be used multiple times.
- Cost effective nozzle.

PRODUCT DESCRIPTION	CODE	PACK SIZE
380ml Extended Plastic Nozzle (12mm)	NOZZEXTD	1
1 Litre Extended Plastic Nozzle (12mm)	NOZZEXTD1	1

# REPLASTERING SPECIFICATIONS

## SALT NEUTRALISING TREATMENT



**Salt Neutraliser** is a surface treatment used to neutralise the harmful effects of salt to your plaster finish. In cases where replastering can be avoided, salt neutraliser is used on the interior walls to prevent residual salts in the masonry from causing future damage to plaster finishes.

- Can be used on all types of masonry.
- Can save considerable time and money on replastering.
- Can be used in a concentrated or diluted form.
- Can be applied to preserve interior plaster finish.

PRODUCT DESCRIPTION	CODE	PACK SIZE	TYPICAL COVERAGE
Salt Neutraliser, Clear	SNEUT	5 Litre	Approx. 5m <sup>2</sup> to 10m <sup>2</sup> , dependent on substrate porosity

## RENDERPROOF ADDITIVE



**Renderproof** is an additive designed for use in external and internal render coats to prevent the passage of water and residual salts, usually following the insertion of a DPC.

- Can be used on all types of masonry.
- Reduces pore size in render to inhibit passage of water.
- Prevents passage of residual ground salts and water.
- Highly concentrated - 1 part renderproof for 24 parts water.
- Maintains a vapour permeable substrate allowing walls to breath and dry out.

PRODUCT DESCRIPTION	CODE	PACK SIZE	TYPICAL COVERAGE
Renderproof, Pink	RENDERPROOFIL	1 Litre	0.5 Litres per 25Kg Bag of Cement
Renderproof, Pink	RENDERPROOF5L	5 Litre	
Renderproof, Pink	RENDERPROOF25L	25 Litre	

Replastering is essential after a DPC, as residual salts and moisture can damage the plaster finish. Wykamol offer a range of replastering options with waterproofing and salt inhibiting properties.

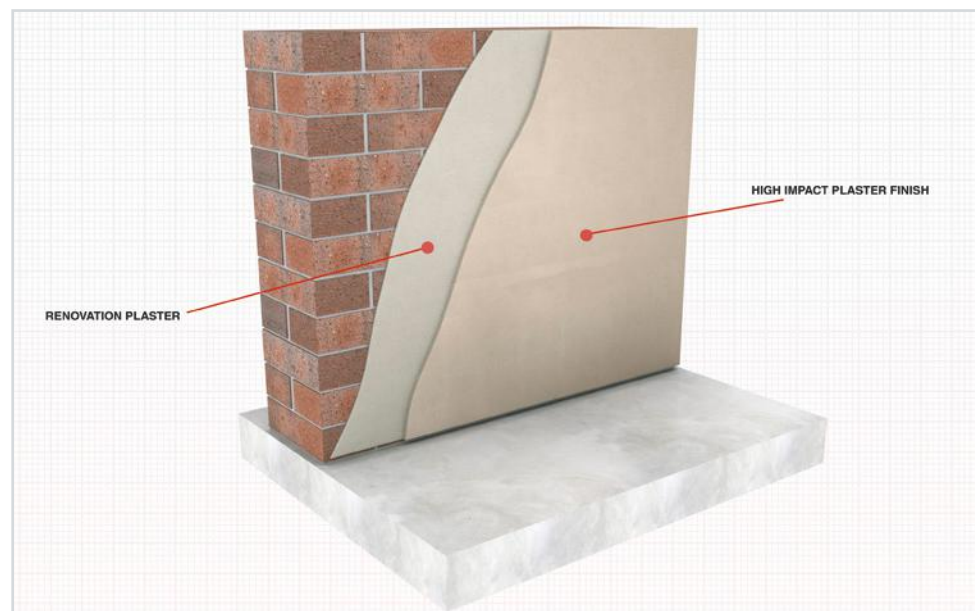
## RENOVATION PLASTER



**Renovation Plaster** is a fibre reinforced, lightweight, cementitious plaster to be used as part of a replastering specification after the application of a DPC. It is designed to have similar properties to a 1:1:6 cement:lime:sand plastering mortar, with perlite replacing some of the sand to improve thermal resistance and reduce condensation. Renovation Plaster can be used in conjunction with basement waterproofing systems such as Tanking Slurry and is part of our Wykamol Eco Product Range due to its energy saving properties. **Note:** DO NOT apply Thistle Multi-Finish on top of Renovation Plaster.

- Contains perlite for improved thermal performance.
- Prevents formation of black mould.
- Reduces risk of condensation.
- Easy to use - very light weight and premixed for quality control.
- Prevents damp and salt migration.
- Fibre reinforced - eliminates cracking.
- Inhibits rusting of angle beads, conduits etc.
- 20 kg bag for safe manual handling.

PRODUCT DESCRIPTION	CODE	PACK SIZE	TYPICAL COVERAGE
Renovation Plaster, Grey	RENPLA	20 Kg	3 m <sup>2</sup> / 20 Kg bag at 10 mm thickness
Renovation Plaster, Grey, Pallet Rate	RENPLAPALL	50 X 20 Kg	



# REPLASTERING SPECIFICATIONS

## HIGH IMPACT PLASTER FINISH



**High Impact Plaster Finish** is highly durable and designed to provide a quality, long-lasting finish over Wykamol's Renovation Plaster, or a range of other substrates, including existing gypsum plaster, plasterboard and lime based backgrounds. High Impact Plaster Finish should be used as part of the Replastering System, after the installation of a damp-proof course. It is also an ideal product to use as part of flood remediation due to its breath-ability and domestic commercial environments such as hospitals, schools and childrens nurseries which are prone to accidental damage. **Note:** High Impact Plaster Finish is not suitable for application onto sand/cement mixes and should only be used for interior plastering works.

- Excellent resistance to glancing impacts.
- High resistance to accidental damage such as scratching, gouging or chipping.
- Extended times between necessary maintenance of plaster finish.
- Compatible with multiple substrates.
- Flexible and breathable.
- Can be left unpainted if a natural, matt Look is desired.
- Extended working time compared to similar products.
- Workable and easy to apply.

PRODUCT DESCRIPTION	CODE	PACK SIZE	TYPICAL COVERAGE
High Impact Plaster Finish	NMDHIPF20	20Kg	Up to 8 m <sup>2</sup> / 20 Kg bag at 2 mm thickness
High Impact Plaster Finish, Pallet Rate	NMDHIPF(50)	50 X 20Kg	

## SBR LATEX CEMENT ADDITIVE



A specially modified liquid latex which is compatible with any cement based mix. It may be incorporated into cementitious renders, screeds or patching mixes, or applied directly to the substrate, to improve adhesion and resistance against water, chemical and abrasion.

- Can be used in areas of continuous or intermittent water contact.
- Improves flexibility and reduces cracking.
- Improves resistance to chemicals and abrasion.
- Improves adhesion.
- Improves workability of mix.
- Allows thinner screed to be laid.
- Imparts high water/salt resistance when added to mix.

PRODUCT DESCRIPTION	CODE	PACK SIZE	TYPICAL COVERAGE
SBR Latex, White	SBR5L	5 Litre	Please refer to the Technical Data Sheet or Contact the Wykamol Technical Department
SBR Latex, White	SBR25L	25 Litre	

Replastering is essential after a DPC, as residual salts and moisture can damage the plaster finish. Wykamol offer a range of replastering options with waterproofing and salt inhibiting properties.

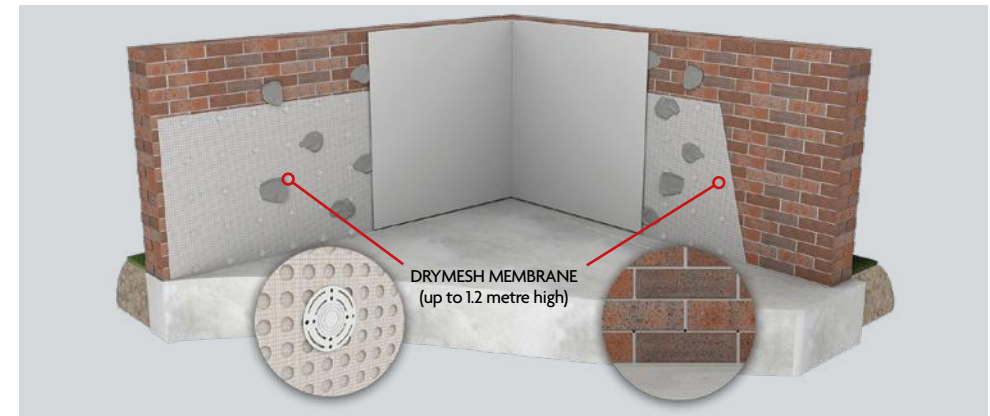
## DAMPSTOP MESH MEMBRANE KIT

**Dampstop Mesh Membrane Kit** is a 3mm studded damp proofing membrane which is applied, studs facing the wall, using the fixing plugs and tape provided. The slimline 3 mm thickness of the membrane allows for an even plaster finish across the wall.

**KIT INCLUDES:**  
 1m X 10m of CM3 Mesh Membrane  
 100 fixing plugs  
 Fibre Tape



- Can be used in conjunction with ultracure DPC cream.
- Creates a warmer wall to help prevent condensation and black mould.
- Fast drying out process after application of chosen finish.
- Accepts direct render finish and .
- Dot and dab plaster board.
- Resistant to harmful salts.
- Can be applied to damp walls.
- Easily cut down using a sharp blade.



PRODUCT DESCRIPTION	CODE	PACK SIZE	TYPICAL COVERAGE
Dampstop Mesh Membrane Kit, Clear	KMESHECOKIT	KIT	10 m <sup>2</sup>
CM3 Mesh Membrane ONLY, Clear	CM3MESH1X10	1m x 10m	10 m <sup>2</sup>
CM3 Mesh Membrane ONLY, Clear	CM3MESH1X20	1m x 20m	20 m <sup>2</sup>
CM3 Mesh Membrane ONLY, Clear	CM3MESH1.2X20	1.2m x 20m	24 m <sup>2</sup>
CM3 Mesh Membrane ONLY, Clear	CM3MESH2X20	2m x 20m	40 m <sup>2</sup>

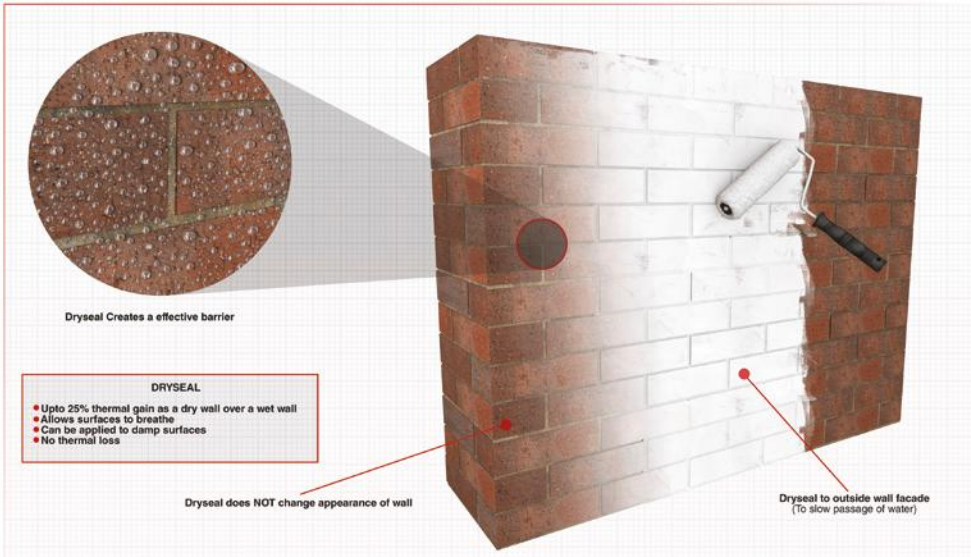
# EXTERNAL SURFACE TREATMENTS

## DRYSEAL MASONRY CREAM



**Dryseal** is a waterproofing cream for the protection of masonry surfaces against water, pollutants and frost salt damage. Always perform a small test application to ensure finish is as desired.

- Easy application by brush, roller or low pressure spray.
- Protects against efflorescent salts which damage paintwork.
- Becomes effective straight after drying (approx. 3 hours).
- Can be applied to damp surfaces.
- Improves insulation by keeping surfaces dry.
- Allows surfaces to breathe.
- Appears white when wet for easy application.
- Dries colourless and does not stain surfaces.
- Helps keep substrate dry so improves insulation by 25%.



PRODUCT DESCRIPTION	CODE	PACK SIZE	TYPICAL COVERAGE
Dryseal, White (Clear when dry)	DRYSEAL3	3 Litre	Up to 25 m <sup>2</sup> in a 1 coat application dependent on substrate porosity

From damp-proofing and waterproofing, to providing an attractive and hard wearing finish: our surface treatments do it all.

## ENVIROSEAL WATER REPELLENT



**Enviroseal** is an effective, liquid based, solvent free, silicone water repellent which can be used on a wide range of materials. Always perform a small test application to ensure finish is as desired.

- Easy application by brush, roller or low pressure spray
- Becomes effective immediately after drying (approx. 3 hours)
- Will shed water born dirt and surface contamination
- Allows surfaces to breath
- Improves insulation
- Can be applied to damp surfaces



PRODUCT DESCRIPTION	CODE	PACK SIZE	TYPICAL COVERAGE
Enviroseal, White	ENVIRO5LT	5 Litre	1 Litre covers up to 5m <sup>2</sup> in a 2 coat application dependent on substrate porosity
Enviroseal, White	ENVIRO25LT	25 Litre	

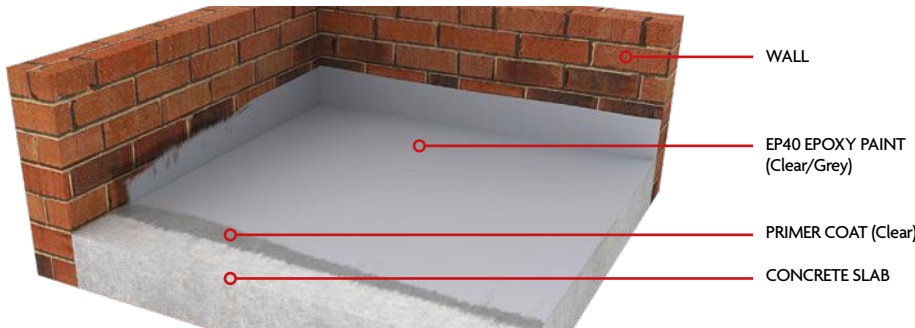
# NO MORE DAMP FLOORS AND WALLS

## EP40 EPOXY FLOOR COATING SYSTEM



**EP40 Floor Coating System** is a water based, easy to apply system which consists of the EP40 Epoxy Floor Primer and the EP40 Epoxy Finish Coat in grey or clear. The primer is designed to soak into the substrate, block pores, improve adhesion and ensure an even, high quality finish. After the final application of EP40 Finish Coat, floors become easier to clean and hard wearing.

- Easy to apply.
- Excellent adhesion to concrete.
- Provides attractive, dust free finish.
- Substantially more resistance to chemicals, fuels and lubricants.
- Can be used internally and (externally if covered).
- Ideal for areas with high foot traffic and vehicles such as forklift trucks.
- Can be applied to green concrete after 7 days.
- Floor becomes easier to clean with impervious finish.



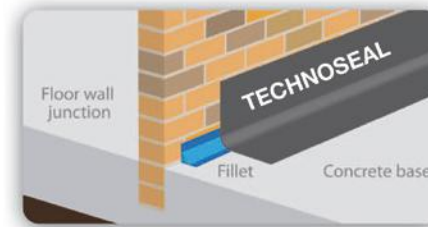
PRODUCT DESCRIPTION	CODE	PACK SIZE	TYPICAL COVERAGE
Epoxy Floor Coating, Primer	NMDEPP2.5	2.5Kg	Up to 20m <sup>2</sup> depending on substrate porosity and roughness
Epoxy Floor Coating, Grey	NMDEP40G2.5	2.5Kg	
Epoxy Floor Coating, Clear	NMDEP40C2.5	2.5Kg	
Epoxy Floor Coating, Primer	NMDEPP5	5Kg	Up to 40m <sup>2</sup> depending on substrate porosity and roughness
Epoxy Floor Coating, Grey	NMDEP40G5	5Kg	
Epoxy Floor Coating, Clear	NMDEP40C5	5Kg	

## TECHNOSEAL MEMBRANE PAINT



**Technoseal is a SBR latex-based liquid applied membrane for waterproofing applications. Available in black and white.**

- Non-toxic, non-hazardous and solvent free
- Ideal in very wet areas - floors and walls in wet rooms
- Easy application by brush, roller or high pressure spray
- Apply to blockwork, stone, brick, timber and concrete
- Can be applied to damp walls and floors
- Can be plastered and boarded on top
- For internal use only unless rendered/protected on top
- Two coat application



PRODUCT DESCRIPTION	CODE	PACK SIZE	TYPICAL COVERAGE
Technoseal, Black	TECSEAL	5 Litre	Covers up to 5 m <sup>2</sup> in a 2 coat application
Technoseal, White	TECHSEWTS	5 Litre	



# WATERPROOFING MEMBRANE KITS

## BASELINE 8 MEMBRANE KIT



CM8 Membrane Kit is a studded damp proofing and waterproofing membrane which is applied, studs facing the wall, using the fixing plugs and tape provided.

**KIT INCLUDES:**  
2m X 20m (40m<sup>2</sup>) CM8 Membrane with 8mm Studs, 200 Fixing plugs with Seals and Tape



- Can be used below ground as part of a waterproofing system, or above ground to prevent penetrating damp.
- Ideal for walls where a chemical DPC is not possible e.g. rubble filled walls.
- Ideal for battened dry wall systems
- Creates a warmer wall to help prevent condensation and black mould.
- Resistant to harmful salts.
- Full wall protection against penetrating and rising damp.

ABOVE GROUND APPLICATION



BELOW GROUND APPLICATION



PRODUCT DESCRIPTION	CODE	PACK SIZE	TYPICAL COVERAGE
Baseline 8 Membrane Kit, Clear	K8KITM2X20	KIT	40m <sup>2</sup>
Baseline 8 Membrane Only, Clear	CM82X20	2m x 20m	40m <sup>2</sup>
Accessory Pack, Plugs & Tape (no Membrane)	BASE8ACCPK	KIT	Suitable for 40m <sup>2</sup> membrane

## DRY MESH MEMBRANE KIT

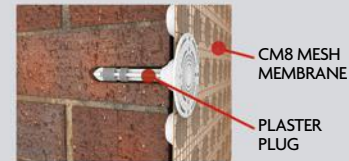


Dry Mesh Membrane Kit is a studded damp proofing membrane which is applied, studs facing the wall, using the plugs and tape provided.

**KIT INCLUDES:**  
2m X 10m (20m<sup>2</sup>) CM8 Membrane with 8mm Studs, 200 Fixing plugs with Seals and Tape



- Resistant to harmful salts.
- Creates a warmer wall to help prevent condensation and black mould.
- Can be used below ground as part of a waterproofing system.
- Full wall protection against penetrating and rising damp.
- Accepts direct render finish and dot and dab plaster board.
- Ideal for walls where a chemical DPC is not possible e.g. rubble filled walls.



PRODUCT DESCRIPTION	CODE	PACK SIZE	TYPICAL COVERAGE
Dry Mesh Membrane Kit, Clear	KMESHKITM2X10	KIT	20m <sup>2</sup>
Dry Mesh Membrane Only, Clear	CM8MESH2X10	2m x 20m	20m <sup>2</sup>
Accessory Pack, Plugs & Tape (no Membrane)	DRYMESHACCPK	KIT	Suitable for 20m <sup>2</sup> membrane

# ENERGY PERFORMANCE

## AND DAMP CONTROL IN ONE APPLICATION

### ISOTHERM

**ISO-THERM** is an ultra thin (+/-4mm) specially woven polyester based material, which is both unique and patented. Available in rolls of 1 metre wide, it is flexible and lightweight and will accommodate a multitude of wall finishes. Due to its ease of use and flexibility it can be cut around light switches/sockets/radiator brackets and the like, and is minimally invasive in its installation.

Very often, door architraves and skirtings can remain in place, and because of its malleability it fits around and into window reveals with ease. It is fixed in place with our unique **ISO-THERM** adhesive, normally trowelled onto the wall to a thickness of circa 5mm, and with the **ISO-THERM** affixed and rolled into the adhesive, the overall finished depth after a direct plaster skim coat is approximately 10mm.

**ISO-THERM** is vapour permeable, but waterproof, thereby resisting any lateral damp transference, and stopping the subsequent natural surface nitrates and chlorides forming as an efflorescent salt.

Because of its high thermal benefit, and the withholding of any natural damp transference it is highly resistant to any formation of surface mould. The sheer speed of application, and the ability to apply direct to sound plastered walls, means that large areas can be applied in a very short space of time, and save for the plaster skim coat and painting, both residential and commercial properties suffering from cold and damp/mouldy walls can be improved substantially with the minimum of disruption.

**We believe this to be the most exciting and innovative product for improving internal cold & damp walls in a generation.**

CODE	SIZE
ISOTHERM7.5X0.95	1 x 7.5m metre roll
ISOTHERM15X0.95	1 x 15m metre roll
ISOTHERMBOND15	iso therm adhesive



**A new and innovative patented textile based thermal system for wall insulation & damp control, for dry and warm walls.**

### ISO-THERM

#### DESCRIPTION

ISO-THERM is a thermal insulator made by a base of 100% polyester non-woven fabric coated with a flame-retardant acrylic compound, 100% water-based.

#### Diagram Key

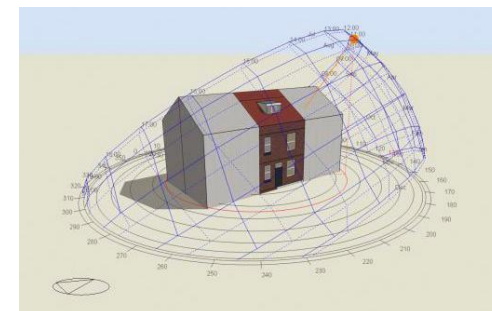
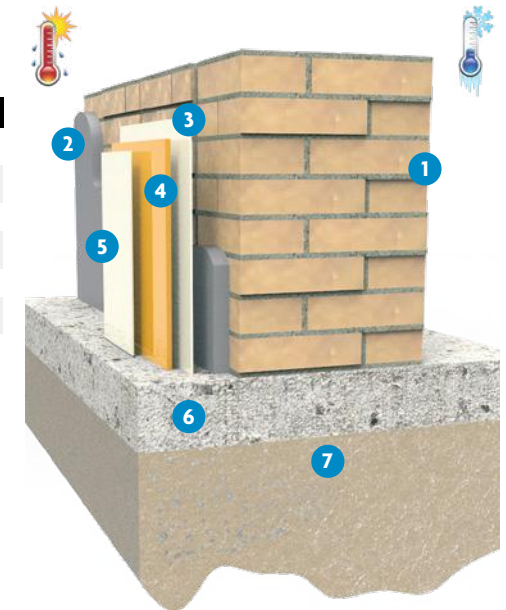
1. Wall
2. Render - Plaster Finish
3. ISO-Therm Adhesive
4. Liner ISO-THERM
5. Finishing - Plaster Skim Coat
6. Concrete Floor
7. Ground

### ISO-THERM ADHESIVE

#### DESCRIPTION

It is a mineral adhesive, ready for use. Composed by stabilized potassium silicate, siliceous aggregates, quartz sand with controlled granulometry and various additives. It ensures compliance with physical parameters such as: permeability, water repellency, CO2 diffusion.

### ISO-THERM DIAGRAM



#### Solid brick wall mid terrace

Wall U-value  
(BS EN ISO 6946):

Baseline = 1.898 W/m<sup>2</sup> · K  
Retrofit = 1.488 W/m<sup>2</sup> · K

% Improvement = 21.60%



**Part of the Wykamol energy saving product range, “Triple lock heat saver” technology when used in conjunction with ThermalDry and Dryseal**

# ANTI-CONDENSATION AND MOULD CONTROL

## MOULD ERADICATION KIT



**KIT INCLUDES:**  
 MCS 1 Mould Clear Solution, MCS 3 Fungicidal Additive x 2, Soft sponge, Protective Gloves, Protective Eye wear and User Guide.

**Mould Eradication Kit** contains everything you need to remove and kill mould growth in your home and prevent it returning. MCS3 Fungicidal Additive also sold separately. Always refer to the Safety Data sheet, and use the personal protection equipment provided.

- Removes and kills mould for up to 5 years.
- Solution cleans and sterilises the surface.
- Solution can be used on walls, ceilings, window reveals, frames, doors etc.

## MOULD ADDITIVE



**Mould Fungicidal Additive** is also available as an individual product. Prevent mould growth before it even happens by including No More Mould in the decoration process.

- Fungicidal additive can be added to emulsion and gloss paints, wallpaper paste and grouts
- Fungicidal additive prevents further growth of mould spores

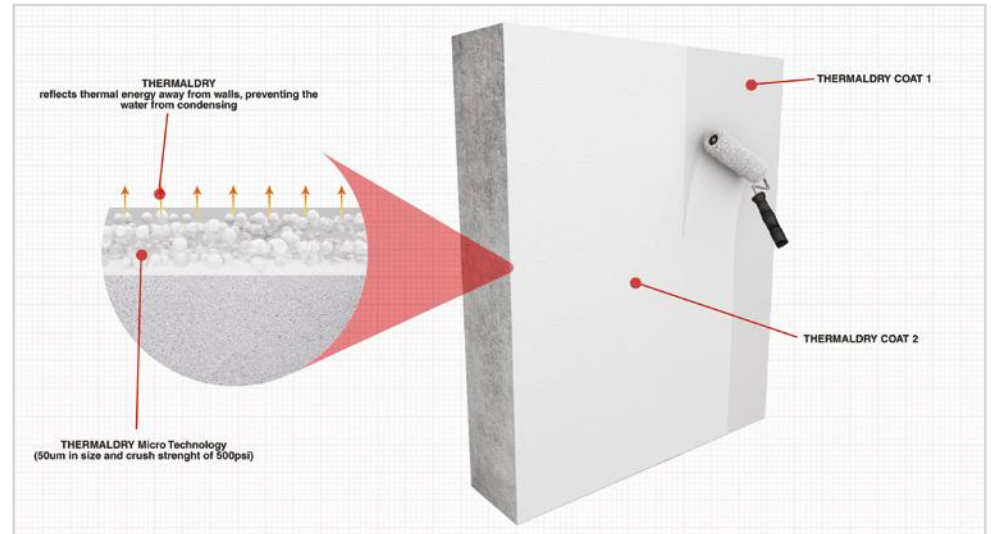
PRODUCT DESCRIPTION	CODE	PACK SIZE	TYPICAL COVERAGE
Mould Eradication, Clear	MCSKITBOX	KIT	MCS1 covers approx. 12.5 m <sup>2</sup> based on 1 coat
Fungicidal Additive ONLY, Clear	MCS3100	100 ml	Water based - 100ml/5L - Solvent based - 50ml/5L
Mould Clear Solution Spray Bottle	MCS1IL	1 Litre	Dependent upon level of contamination

## THERMALDRY ANTI-CONDENSATION COATING



**ThermalDry Anti-Condensation Coating** is both thermally insulating and water repelling. It increases the wall temperature, thus reducing the 'dew point', or the temperature at which condensation occurs.

- Coating is waterproof when dry and walls are warm to the touch.
- Takes up to 60% longer for condensation to occur on walls.
- Can be painted or wall papered over with any finish, without reducing its effectiveness.
- Suitable for any interior wall - particularly exterior facing walls, bathrooms and kitchens.
- Prevents formation of black mould and other harmful fungi.
- Eco-friendly and antibacterial.
- Reduces the risk of condensation.
- Increases the life of your chosen paint or wallpaper finish.



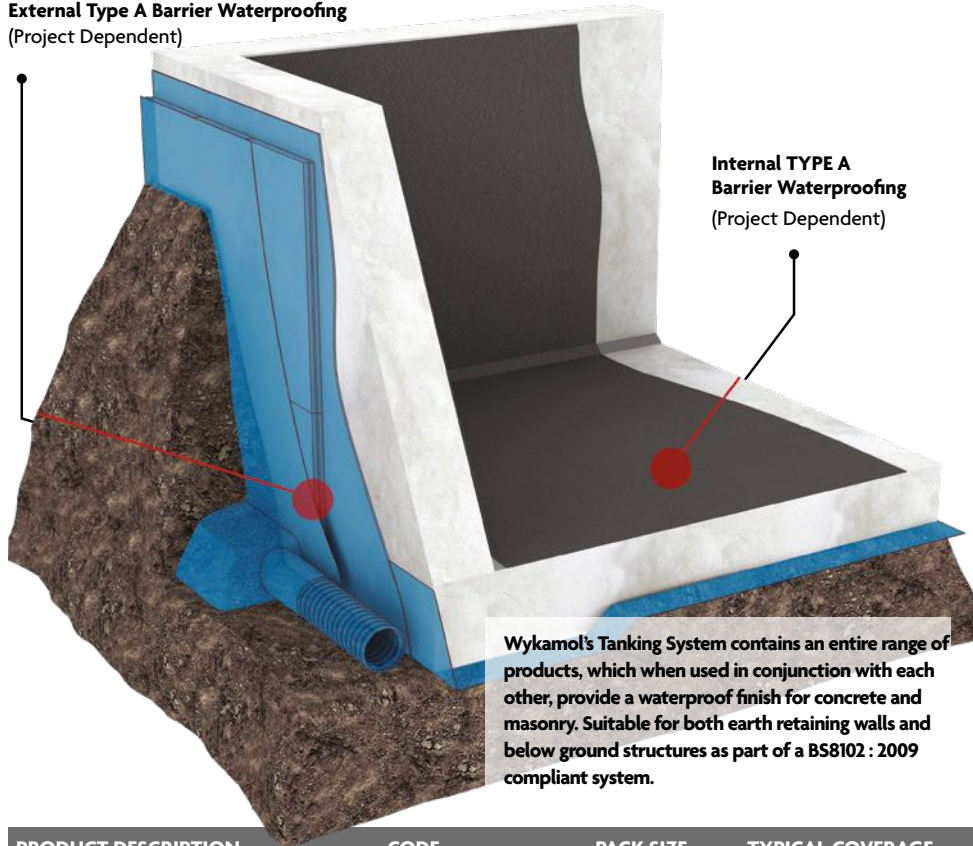
PRODUCT DESCRIPTION	CODE	PACK SIZE	TYPICAL COVERAGE
ThermalDry Anti-Condensation Coating	NMDTHERMDRY2.5	2.5 LITRE	5-6.25m <sup>2</sup> *
ThermalDry Anti-Condensation Coating	NMDTHERMDRY5	5 LITRE	10-12.5m <sup>2</sup> *

\*Coverage is based on a 2 coat application and dependent on porosity of substrate.

# TANKING SYSTEM

For in depth technical advice speak to your Area Technical Manager. Ask in branch for their contact information or call the Wykamol Group Head Office on 0845 400 6666.

External Type A Barrier Waterproofing  
(Project Dependent)



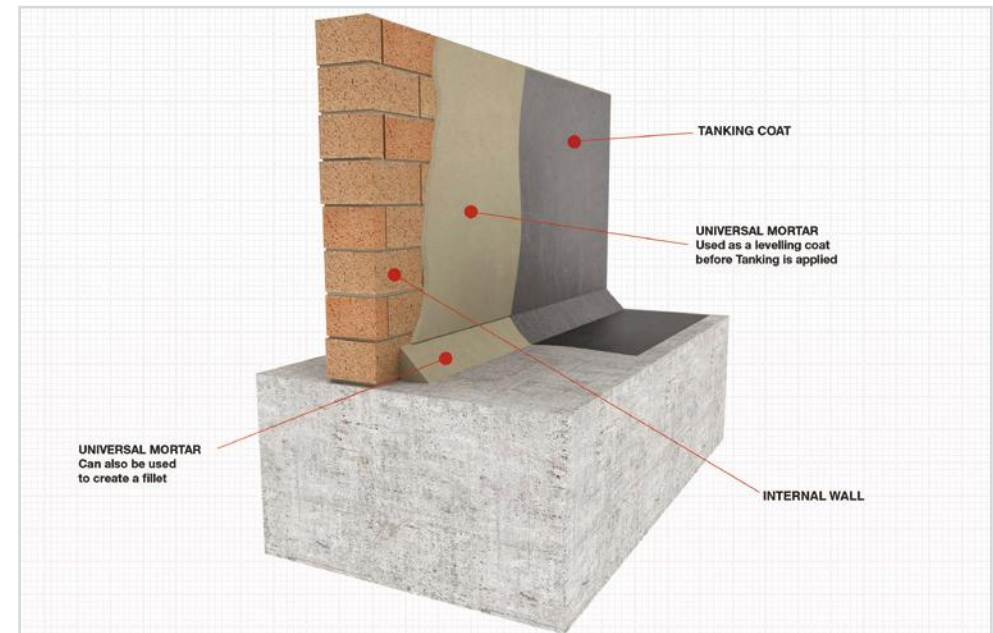
PRODUCT DESCRIPTION	CODE	PACK SIZE	TYPICAL COVERAGE
Waterstop, Grey	NMDWATERSTOP	5kg	Please Refer to Data Sheet
Universal Mortar and Fillet Seal	UNIMORT	25kg	1.4m <sup>2</sup> at 10mm thickness
Tanking Slurry Bag in Bucket, Grey	NMDTANKBUCK20	20kg	7m <sup>2</sup>
Tanking Slurry Bag, Grey	NMDTANK20	20kg	7m <sup>2</sup>
Tanking Slurry Bag in Bucket, Grey Pallet Rate	NMDTANKBUCK PALL20	20kg x 50	7m <sup>2</sup>
Tanking Slurry Bag, Grey Pallet Rate	NMDTANK PALL20	20kg x 50	7m <sup>2</sup>
Hydrflex	HYDRAFLEX20	20kg	upto 6m <sup>2</sup>

## UNIVERSAL MORTAR



Universal Mortar is a fibre reinforced, cementitious mortar which can be used for waterproofing, levelling and profiling and as a fillet at wall to floor and wall to wall junctions. **JUST ADD WATER!**

- Wide range of applications from a single product.
- An integral part of the no more damp tanking slurry waterproofing system.
- High bond strength which ensures monolithic performance.
- Fibre reinforced to give improved tensile and impact strength.
- Suitable for horizontal, vertical and overhead applications.
- Factory batched to provide a more consistent quality than 3:1 sand:cement mix.



# TANKING SYSTEM

# HYDRAFLEX

## Premium elastomeric waterproof membrane for brickwork, concrete and stone

HydraFlex is a two-component flexible coating made of a cementitious powder and a high concentration liquid polymer.

It can be applied to mineral substrates, such as concrete and masonry, to provide a protective waterproof barrier which can bridge cracks in the substrate so the coating remains water-tight.

With superior crack-bridging ability down to -5°C, as well as thixotropic application properties, HydraFlex is a suitable solution for areas at risk of movement in both internal and external environments.

### ADVANTAGES

- Permanent waterproofing for concrete and masonry.
- Superior crack-bridging capability, even at sub-zero temperatures, making it ideal for high-risk areas.
- Resists both positive and negative water pressure.
- Recommended for both internal and external use.
- Bag and bottle system ensures accurate and simple mixing.
- Versatile product which can be used in a variety of areas.
- Excellent adhesion to well-prepared mineral substrates, even when damp.
- Exceptional workability, providing easy application on vertical and overhead surfaces.



### TYPICAL USES

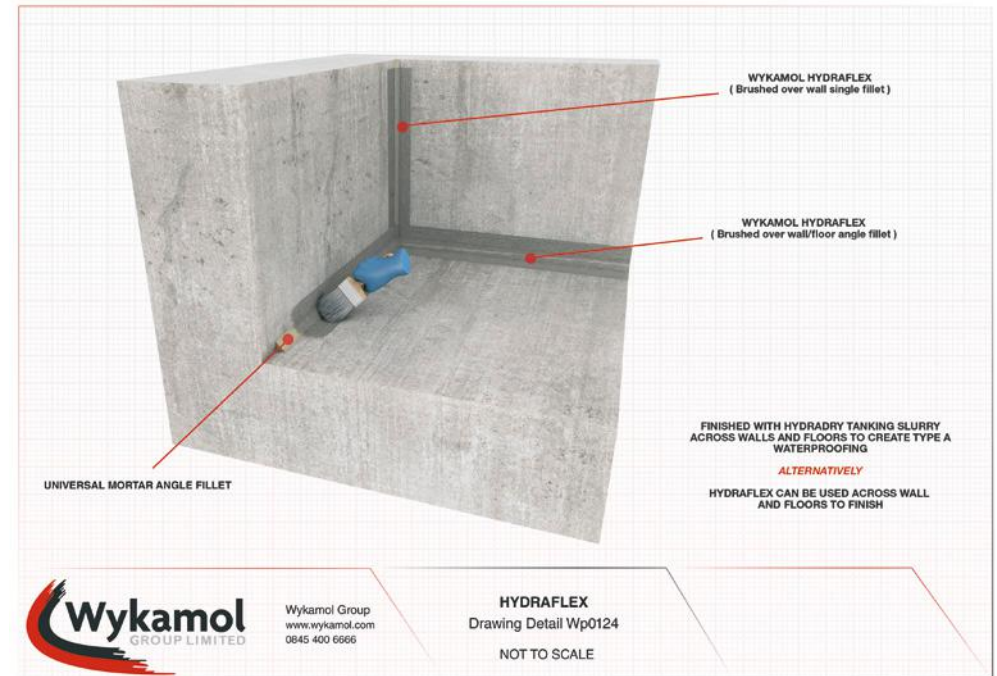
Waterproofing of areas subject to vibration or minor substrate movement that are constructed of concrete, brickwork, or stone.

These areas include:

- Basements, cellars, foundations, lift pits.
- Water tanks.
- Construction joints, wall-floor junctions, etc.
- Podium decks, balconies/terraces, flat roofs.

PACK SIZE	PRODUCT CODE	COVERAGE
20 kg	HYDRAFLEX20	up to 6m <sup>2</sup>
Supplied as Powder & Polymer, coverage at 2mm thickness		

For in depth technical advice speak to your Area Technical Manager. Ask in branch for their contact information or call the Wykamol Group Head Office on 0845 400 6666.



### CONDITIONS & LIMITATIONS

- Substrate and ambient temperature must be over 5°C at time of application and for the following 24 hours.
- Avoid application in direct sunlight to prevent rapid drying out.
- Aquatic environments should be finished with Technoseal DPM.
- Not tested for use in swimming pools or in contact with potable water.
- If product is used in an external environment it should be covered after 72 hours and not left as the final finish.
- Gypsum plaster must not be used in direct contact with HydraFlex.



# WATERPROOFING MEMBRANE AND PRIMER

## SUREPROOF (External application)

SureProof is a high performance, cold applied, flexible, waterproof membrane incorporating a cross-laminated HDPE carrier film with a strong adhesive polymer modified bitumen compound. The adhesive surface is protected by a disposable paper interleaving wider than the membrane for easy release during application. To ensure correct sealing at overlaps there is a double-sided adhesive strip along the edges covered by a separate interleaving strip.

SureProof should be laid in accordance with the provisions of BS 8102:2009. Where SureProof is being used as a floor DPM there should be continuity with the wall DPC's and other DPM's used in the structure.

### ADVANTAGES

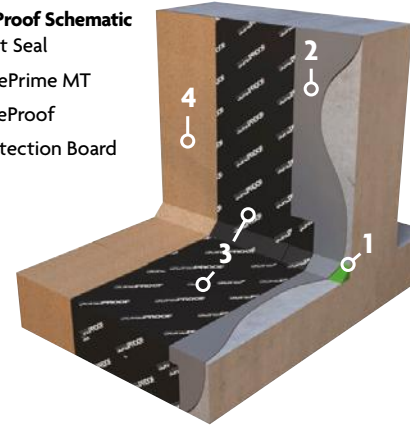
- Resistant to ground water, soluble sulphates and chlorides.
- Suitable for waterproofing basements grades 2 & 3 as defined in BS 8102:2009, 'protection Of Structures Against Water From The Ground'.
- Cross-laminated HDPE film for protection against damage.
- Dimensionally stable.
- Tough and flexible, ideal for detailing around corners.
- Self-adhesive layer system makes installation easy, quick and reliable.
- BBA Certificated.



SureProof is a high performance, cold applied, flexible, waterproof membrane incorporating a cross-laminated HDPE carrier film with a strong adhesive polymer modified bitumen compound.

### SureProof Schematic

- 1 Fillet Seal
- 2 SurePrime MT
- 3 SureProof
- 4 Protection Board



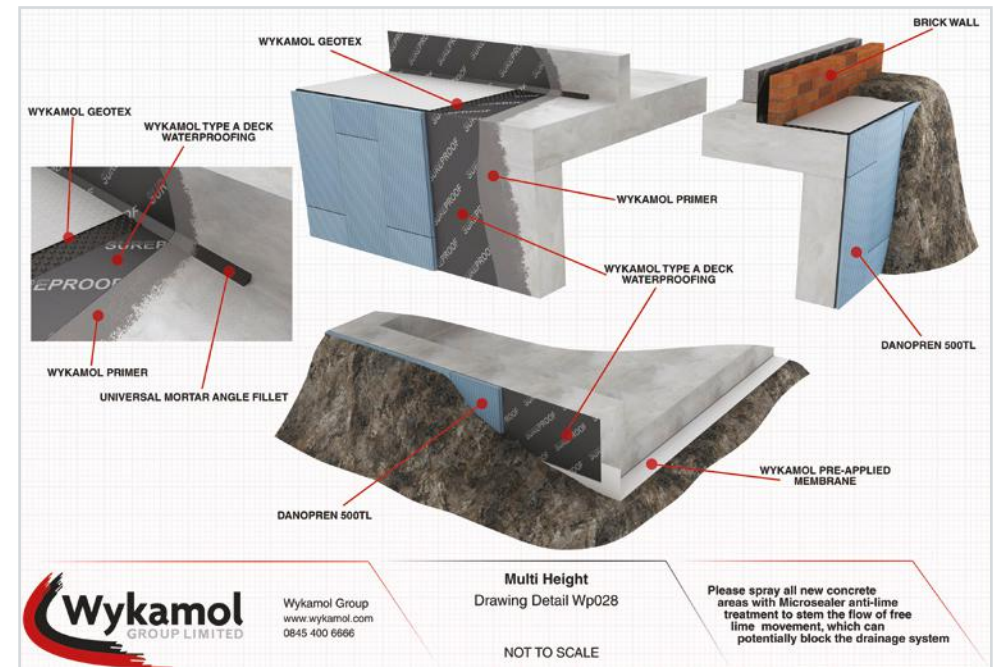
### PACKAGING

#### SUREPROOF

Roll size	1.05 m x 19.05 m
Roll area	20m <sup>2</sup>
End laps	150mm minimum
Edge laps	50mm minimum
Weight	33Kg

#### SUREPRIME MT

Coverage	6 to 8 m <sup>2</sup> /litre
Pack size	5 Litre & 25 litre Drums
Minimum installation temperature:	≥ + 5°C
Drying time @ 20°C	1 to 2 hours



**Wykamol**  
GROUP LIMITED

Wykamol Group  
www.wykamol.com  
0845 400 6666

Multi Height  
Drawing Detail Wp028

NOT TO SCALE

Please spray all new concrete areas with Microsealer anti-lime treatment to stem the flow of free lime movement, which can potentially block the drainage system

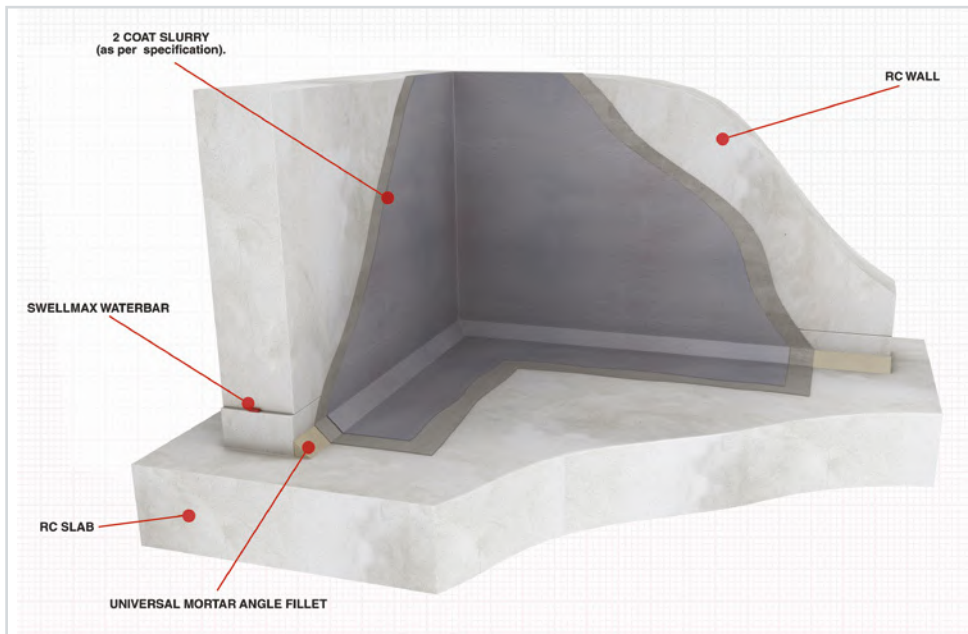
# TANKING SYSTEM

## TANKING SLURRY



Tanking Slurry is a cementitious waterproofing system. Containing crystalline technology, it is designed to form a permanent waterproof coating to concrete and masonry in basements, cellars, foundations, swimming pools, renders, brickwork, blockwork and many other applications.

- Superior bond strength.
- Permanent waterproofing for concrete and masonry.
- Suitable for use internally and externally.
- Suitable for use above and below ground.
- Just add water.
- Safe to use in contact with potable water.
- Easy to apply using brush, roller or spray.



## WATER STOP

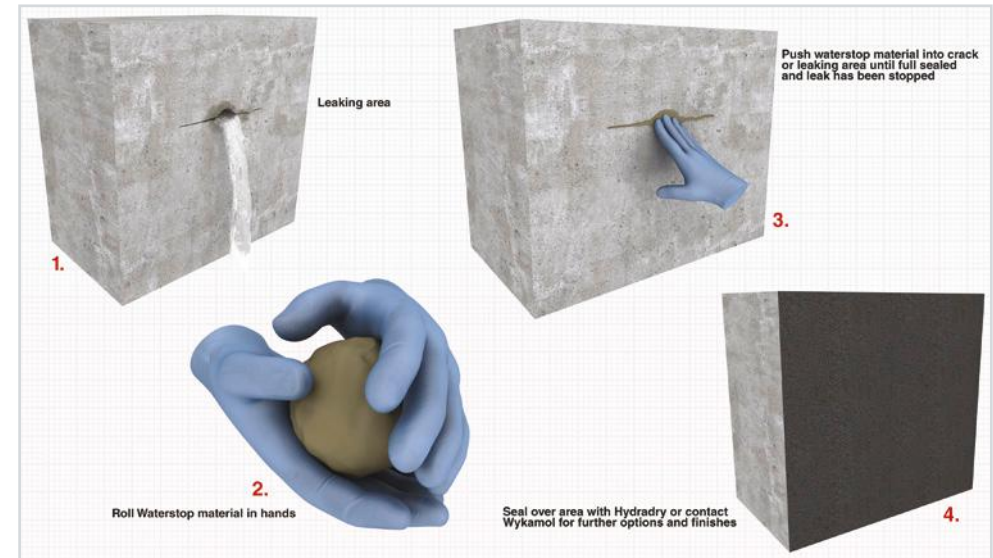


Water Stop is a fast setting, expanding water stop plugging and repair mortar. When mixed with clean water and applied correctly it is formulated for the rapid patching and plugging of active water leaks and seepage in concrete and masonry.

Water Stop is designed to expand as it sets to ensure a permanent water tight seal is achieved and in a cured form displays similar properties to concrete



- Instantly stops leaks in concrete and masonry - tanking slurry waterproof system
- Provides a permanent watertight seal
- Fast setting and rapid curing
- Superior bond strength to concrete and masonry resists positive and negative water pressure
- Suitable for internal and external use
- Safe to use in contact with potable water suitable for use above and below ground
- Resists positive and negative water pressure



# TIMBER ROT TREATMENTS

## INSECTICIDE



**Wykamol's Insecticide** is a ready-to-use insecticidal treatment which is effective against a wide range of wood boring insects, such as woodworm, killing the infestation and preventing future infestations. Always refer to the safety data sheet prior to application, which is downloadable from our website.

- Protection is long lasting
- Kills active infestations and prevents future infestations
- Micro-emulsion technology for deep penetration of timber
- Can be applied by brush and low pressure spray
- Quick drying, non-flammable and virtually odourless

## Microtech Biocide



**Microtech Biocide** is a multi purpose treatment containing 'Polyphase', for fast action and excellent absorption rates into walls suffering from or vulnerable to dry rot, moulds, algae, mosses and lichens. The unique micro-emulsion ensures Microtech Biocide diffuses into hard to reach places for an effective treatment of the masonry.

- Dilutes to make 25 litres of Ready-to-use Product
- Unique micro emulsion system.
- Deep penetration in masonry.
- Non-flammable.
- 1 hour re-entry
- Great product to eliminate moss and lichens

PRODUCT DESCRIPTION	CODE	PACK SIZE	TYPICAL COVERAGE
Insecticide	NMRINSRTU	5 Litre	15 - 20m <sup>2</sup>
Microtech Biocide	MTBIOILT	1 Litre	Makes 25 litres

## WYKABOR 10.1



**Wykabor 10.1** is an aqueous wood preservative for the eradication of common furniture beetles and other wood boring insects, and the prevention of fungal decay in sound timbers. Always refer to the safety data sheet prior to application, which is downloadable from our website.

- Multi-purpose preservative
- Highly penetrating
- Very low odour
- Non-flammable
- Suitable for use on the common furniture beetle and other wood boring insects

## WYKABOR 20.1



**Wykabor 20.1** is a brushable and injectable gel for use on timbers at high risk of damage by wood boring insects, dry rot and wet rot. It is ideal for joist ends, purling, wall plates, cut ends and rafters. Always refer to the safety data sheet prior to application, which is downloadable from our website.

- Highly penetrating permanent protection
- Kills active infestations and prevents future infestations
- 3 in 1 treatment - dry rot, wet rot and wood boring insects
- Can be applied by brush or injected into pre-drilled holes
- Odourless, non-staining and easy to handle
- Low environmental hazard

PRODUCT DESCRIPTION	CODE	PACK SIZE	TYPICAL COVERAGE
Wykabor 10.1	WYKBOR10	5LT	Litre Approx. 20m <sup>2</sup>
Wykabo 10.1	WYKBOR1025LT	25 Litre	Approx. 100m <sup>2</sup>
Wykabo 20.1 Gel	WYKBOR20GEL	5 Litre	Approx. 10 - 12.5m <sup>2</sup>



# TIMBER ROT TREATMENTS

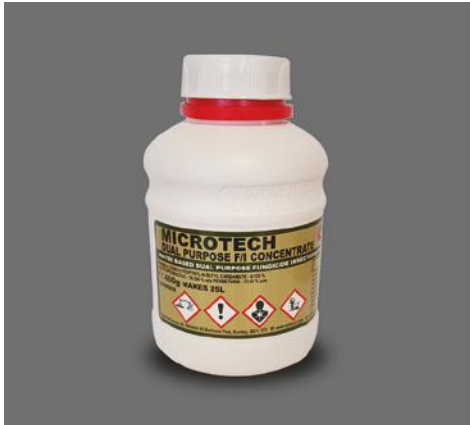
## MICROTECH INSECTICIDE CONCENTRATE



**Microtech Insecticide Concentrate** is a highly Concentrated treatment for the eradication and prevention of wood boring insects. Due to the microscopic size of the active ingredient, Microtech Insecticide is highly penetrating and therefore ultra-effective and long-lasting.

- Killing active infestations of wood boring insects such as woodworm (Anobium Punctatum)
- Prevents re-infestation of wood boring insects
- Window frames
- Fences
- Roof Timbers
- Garden Furniture
- Sheds
- Internal and external use

## MICROTECH DUAL PURPOSE F/I CONCENTRATE



**Microtech Dual Purpose Concentrate** is a super Concentrated timber treatment offering a solution to a range of wood destroying issues. Containing both insecticide and fungicides.

- Killing active infestations of wood boring insects such as woodworm (Anobium Punctatum)
- Prevents re-infestation of wood boring insects
- Prevents fungal decay (wet rot and dry rot)
- Prevents blue stain
- Doors
- Window frames
- Fences
- Roof Timbers
- Garden Furniture
- Sheds

PRODUCT DESCRIPTION	CODE	PACK SIZE	TYPICAL COVERAGE
Microtech woodworm	MTECHINSC	150 gram	82.5m <sup>2</sup> - 250m <sup>2</sup>
Microtech dual	MTECHDUALC	400 gram	82.5m <sup>2</sup> - 125m <sup>2</sup>



# DAMP AND TIMBER COURSES

## DATES AVAILABLE THROUGHOUT THE YEAR

## PLEASE ASK IN BRANCH FOR MORE DETAILS

# WALL TIES AND CAVITY WALL FAILURE

## CAVITY WALL TIES

**Buildings constructed primarily out of masonry are susceptible to varying types of movement which will result in structural defects.**

For the typical structural issues that arise in properties across the UK, Wykamol's NO MORE CRACKS range offer a solution.

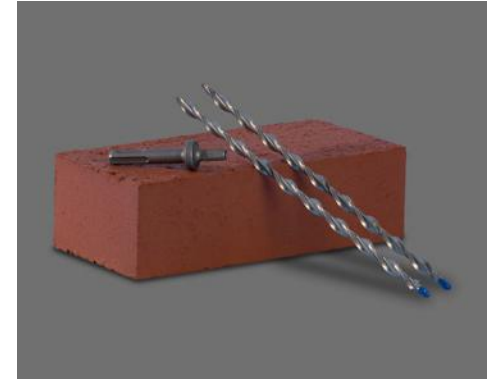
Retrofit of cavity wall ties, resin crack sealing and remedial crack stitching are just 3 issues which can be rectified by the easy-to-use NO MORE CRACKS Kits.



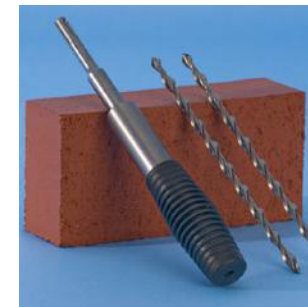
- Easy installation.
- Minimal disruption to the facade or any cavity insulation present.
- Easy to install using a setting tool in a hammer drill (CD wall tie fixing tool).
- Can be fixed in place with grout or resin.
- Robust and corrosion free.
- Proven through independent testing for over 25 years.
- Not effected by combustion, fire or extreme temperature.

Wall ties are an essential element for the stability of a cavity wall structure, tying the weather protecting masonry facade to the main body of the building. Sometimes, cavity wall ties are omitted or the wall ties used are made from inappropriate material and quickly become corroded. In these cases, a retrofit Cavity Wall Ties system must be installed.

Cavity Wall Ties are a helical shaped, remedial wall tie which is driven into the pilot hole and can be installed into any type of masonry. Where the quality of the masonry is suspect, resin or grout can be pumped into the drilled hole to secure the wall tie in place.

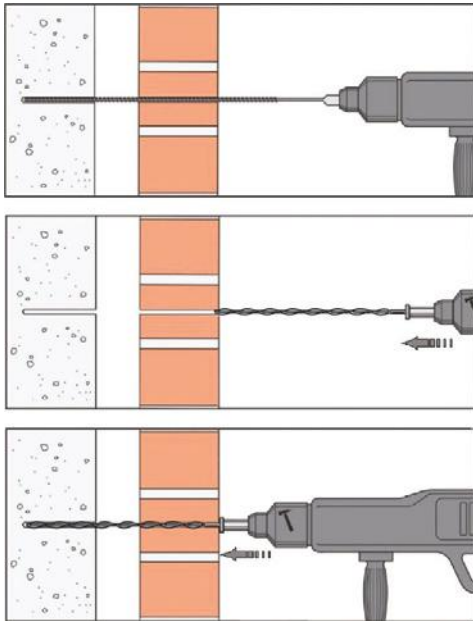


PRODUCT DESCRIPTION	CODE	PACK SIZE
Remedial 180 mm Wall Tie (0 - 20 mm Cavity)	CDT-180-50	50
Remedial 205 mm Wall Tie (25 - 45 mm Cavity)	CDT-205-50	50
Remedial 230 mm Wall Tie (50 - 70 mm Cavity)	CDT-230-50	50
Remedial 255 mm Wall Tie (75 - 95 mm Cavity)	CDT-255-50	50
Remedial 280 mm Wall Tie (100 - 120 mm Cavity)	CDT-280-50	50
Remedial 305 mm Wall Tie (125 - 145 mm Cavity)	CDT-305-50	50
CD Wall Tie Fixing Tool	CDT-DRIVER	1
Epoxy Acrylate Resin	THEA380	380 ml
Single Tube Resin Gun	THRGST	1
Thor Grout Gun	THCS/GK	1



# WALL TIES AND CAVITY WALL FAILURE

## HOW DO I INSTALL WALL TIES?



**1** Drill a pilot hole of appropriate diameter, using a light percussive hammer drill. Stop the drill rotation prior to drilling the remote wall layer, to prevent 'whipping'.

**2** Insert a 9 mm Thor Helical wall tie into the SDS support tool and DRIVE the tie into the masonry using a lightweight rotary hammer drill.

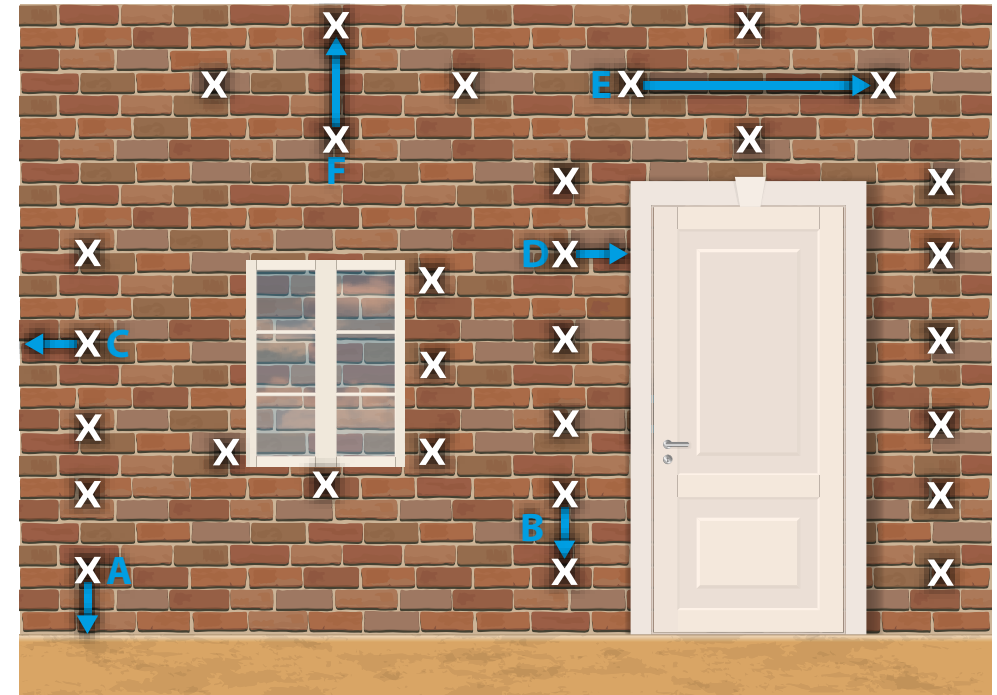
**3** Once the tool recesses the tie beneath the wall face, finish by disguising the entry bore with a suitable filler, compacted around the tie's driving shank portion.



Scan to watch our installation video



## WHERE DO I PLACE THE WALL TIES?



### X Remedial Wall Tie Position

**BRE Recommended Drilling Pattern for 50 - 300 mm cavity width and both leaves more than 90 mm thick:**

- A. Maximum 225mm above DPC/ground level.
- B. Vertical maximum 300mm around openings.

- C. 225 mm from corners.
- D. Minimum 450mm from internal corner brickwork return.
- E. 900mm apart horizontally in a diamond pattern.
- F. 450mm apart vertically in a diamond pattern.

Width of Cavity	Recommended Length of Wall Tie
25 - 50mm	205 mm
60 - 85mm	230 mm
85 - 110mm	255 mm

# WALL TIES AND CAVITY WALL FAILURE

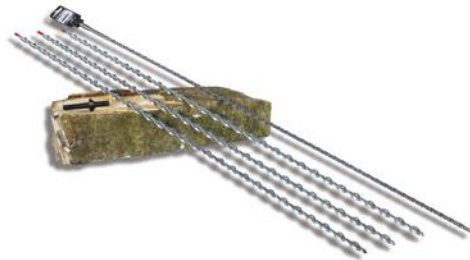
## 12mm DRIVE PINS

The long-series 12mm diameter structural ties have twice the mass of any other self-tapping helical wall ties of similar design or function. They corkscrew into brick, block, limestone and concrete, when driven into an undersized pilot bore, to offer outstanding resistance to axial and shear loads.

Manufactured from marine grade stainless steel (AISI 316) and with a cross sectional area of 29mm<sup>2</sup>, the structural ties are ideal for tying solid façade walls at wall junctions, such as corners and party walls without the need for bonding agents.

Simply drill the pilot holes at 450mm centres and drive ties in. The material cost of this 12mm dry-pinning system is similar to that of using traditional 8mm helical bars with a proprietary cement grout and much faster to install, offering substantial savings in labour, less disturbance and improved cleanliness.

**PRODUCT CODE:** CDT-12-610  
**CDT-12-760**  
**CDT-12-910**  
**CDT-12-DRIVER**



## LATERAL RESTRAINTS

For Tying brickwork to side grain timber floor members. Requires SDS LRT install key and resin to bond to brickwork.

Available in four sizes all 8mm diameter and 1000mm, 1200mm, 1500mm and 2000mm lengths.

**PRODUCT CODE:** THLRT10  
**PRODUCT CODE:** THLRT12  
**PRODUCT CODE:** THLRT15  
**PRODUCT CODE:** THLRT20



### LATERAL RESTRAINTS SETTING TOOL

SDS setting tool for driving Lateral Restraint Ties into side of parallel floor joists, countersinking the remedial tie beneath the surface of the wall.

Screws onto tie bar and its into SDS drill.

Driven into joists with hammer action disengaged.

**PRODUCT CODE:** THLRTK





# HOW TO USE CRACK STITCHING BARS

## CRACK STITCHING KIT

**Crack Stitching kit** with everything needed to improve the structural performance of cracked brickwork and stone walls. High tensile crack stitching bars are bonded into slots made in masonry to stitch across cracks in walls. Tensile forces are redistributed along the full 1m length of the 6mm diameter stainless steel reinforcement bars to stabilise and strengthen the wall. Crack stitching walls is a cost effective remedy for repairing cracked brickwork and masonry.

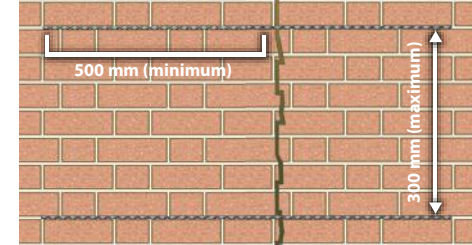


### KIT INCLUDES:

- 10 x 1 M Thor Helical Crack Stitching Bars in Grade 304 Stainless Steel
- 1 x 10 Kg tub containing 2 x 5 Kg of W60 Flexi Grout (yield = 3 L)
- 1 x Grout-Master Applicator with Hi-Flo Nozzle
- 1 x Mixer paddle and 1 x Finger Trowel

PRODUCT DESCRIPTION	CODE	PACK SIZE
NMC Crack Stitching Kit	THCRACKPAC	KIT
Crack Stitching Bar 6mm x 1000mm	THBM6X1000F	1
Crack Stitching Bar 8mm x 1000mm	THBM8X1000F	1
Crack Stitching Bar 9mm x 1000mm	THBM9X1000F	1
Grout-Master Applicator with Hi-Flo Nozzle (yellow)	WHOGM	1
W60 Flexi Grout, 2 x 5Kg in a Bucket	THW60	10Kg/ 3L Yield

## HOW TO PLACE CRACK STITCHING BARS?



MASONRY	DEPTH OF		ROD
	SLOT	GROUT	
102mm	30mm	20mm	20mm
215mm	45mm	30mm	30mm

## HOW TO INSTALL CRACK STITCHING BARS?



Chase horizontal slots at 300mm intervals that extend 500mm on each side of the crack.



Clear loose debris from slots and flush thoroughly with water and insert bead of WHO 60 grout.



Push helical crack stitching bar into grout, to approximately two thirds of the slot depth. Trowel displaced grout to firmly encapsulate the bar.



Make good the wall chase to disguise the slot. Repair cracks between the helically reinforced masonry with Crack Sealer Plus.

# CRACK STITCHING



6mm

## CRACK STITCHING BARS - 6MM

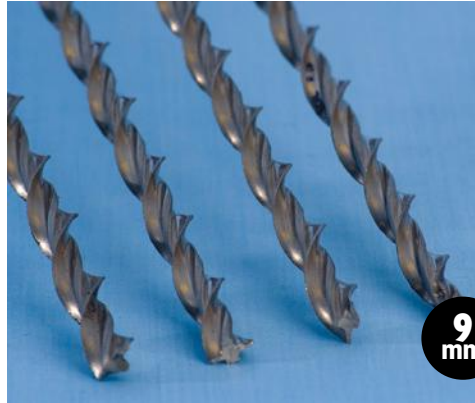
Thor crack stitch repair bars for masonry repairs & reinforcement of cracked walls. Available in four different lengths 1000mm, 1200mm, 2000mm and 7000mm all bars are 6mm in diameter

**PRODUCT CODE: THBM6X1000F**

**PRODUCT CODE: THBM6X1200F**

**PRODUCT CODE: THBM6X2000F**

**PRODUCT CODE: THBM6X7000F** Sold in packs of 5 only (only available to Thor beaming contractors)

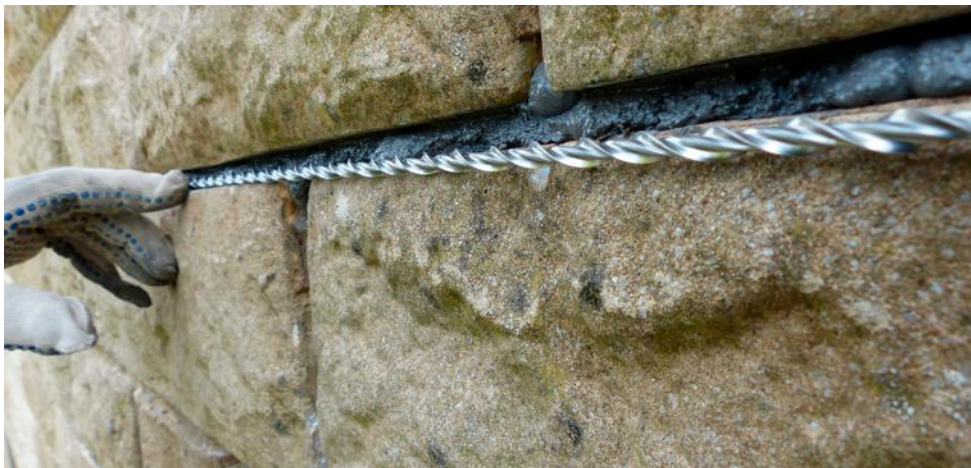


9mm

## HD CRACK STITCHING BAR - 9mm

Thor HD crack stitch repair bars for masonry repairs and reinforcement of cracked walls. Available in 9mm diameter at 1000mm in length.

**PRODUCT CODE: THBM9X1000F**



# CRACK SEALER PLUS



**Crack Sealer Plus** is a 2 part epoxy adhesive specifically formulated for repairing fine cracks in brick, block, stone, concrete and masonry.

- Provides a waterproof seal.
- Quick and easy to use.
- Suitable for bricks, blocks, render and concrete.
- Fills cracks from 2 mm - 12 mm wide without injection ports.
- Flexible 2 mm and 4 mm injection nozzles for ultra-fine cracks.
- Gels rapidly and cures within 12 hours.



### KIT INCLUDES:

- 1 x Crack Sealer Base
- 1 x Crack Sealer Hardener
- 1 x Plunger Plate
- 1 x Piston
- 1 x 400 cc Cartridge
- 1 x Nozzle Set



BEFORE



DURING



AFTER



BEFORE



DURING



AFTER

PRODUCT DESCRIPTION	CODE	PACK SIZE
Crack Sealer Kit for Brick	CRACKRED	300ml
Crack Sealer Kit for Renders	CRACKGREY	300ml

# GUNS, RESINS & GROUTS



## THOR W60 FLEXI GROUT 3 LITRE

Multi purpose pointing and grout gun, easily cleaned for using with Thor W60 grout or cement based pointing products.

**PRODUCT CODE: WHOGM**

Colour: Yellow



## THOR GROUT GUN

Thor crack stitching gun for all Thor masonry reinforcement applications. Large volume manual applicator for mortar or grout, 12:1 trigger ratio.

Choice of nozzles for pointing. Easily replaceable barrel and washer. Heavyduty construction.

**PRODUCT CODE: THCS/GK**

Colour: Black/Orange



## THOR W60 FLEXI GROUT 3 LITRE

A high performance masonry crack repair grout. Used to bond helical masonry reinforcement bars in wall panels for retrofit bedjoint reinforcement. A cement grout/polymer blend in 10kg tub and 5kg tub. Consists of powder component and liquid component, which when mixed yield 3lts of pumpable thixotropic masonry crack repair grout for bonding crack stitching components into concrete and masonry walls.

**PRODUCT CODE: THW60**



## THOR POLYESTER RESIN

High performance rapid curing chemical anchoring system based on polyester resin in styrene for external use. Packed in a two-part cartridges the components are mixed in the nozzle as the resin is dispensed. Provides a strong chemical resistant and cost effective system of setting fixings into concrete, brick and masonry.

**PRODUCT CODE: PE380-1**

Colour: Grey Size: 380ml cartridge (inc Nozzle)



## THOR RESIN GUN SINGLE TUBE

Heavy duty hand operated resin gun suitable for all single tubes (polyester, epoxy acrylate) this gun is a premium model unlike cheaper options, and has a heavy duty spring mechanism, for longer lasting use.

**PRODUCT CODE: THRGST**

Colour: Blue/Black



## THOR DOUBLE RESIN GUN

Heavy duty double piston resin gun for use with thor epoxy resin. This gun is a premium model and has a heavy duty spring mechanism for longer lasting use.

**PRODUCT CODE: THRGTT**

Colour: Red/Black



## THOR EPOXY ACRYLATE

A specially formulated Epoxy Acrylate/Vinyl Ester resin offering protection in damp holes and corrosive applications, as well as giving high loads in concrete. Easy to extrude. Short working and curing times. Ideal for close edge and spacing applications.

**PRODUCT CODE: THEA380**

Colour: Grey Size: 380ml cartridge (inc Nozzle)



## THOR EPOXY RESIN

A two component pure epoxy resin system mixed through spiral mixer nozzles fitted to the cartridge. The components are colour coded for visual assurance that they are fully mixed. The product is solvent free, thixotropic, and cures in cold, damp conditions.

**PRODUCT CODE: THER400**

Colour: Grey Size: 400ml cartridge (inc Nozzle)

# WATERPROOFING SOLUTIONS

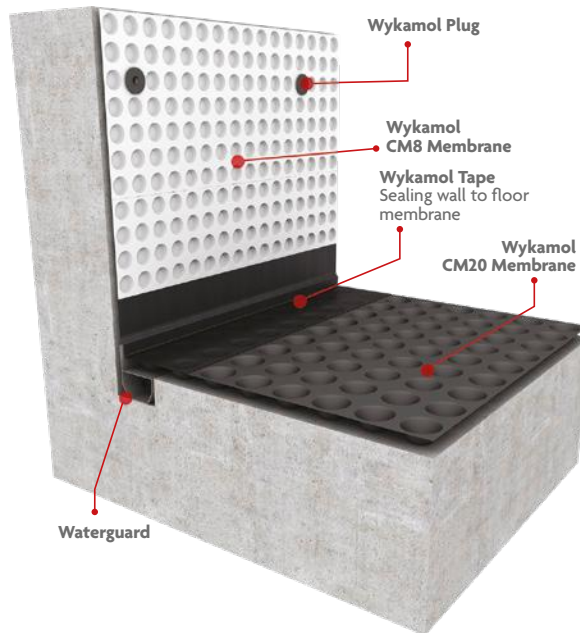
The Wykamol Group are the only UK based manufacturers of waterproofing materials who offer to Design, Advise and Supply all your waterproofing projects. Ask in branch to contact your local Technical Expert.

We will visit site, design your waterproofing specification, provide your local branch with a list of the products you need and deliver them directly to site. Our Structural Waterproofing specialists can aid you in obtaining a 10 Year Insurance Backed Guarantee, supply products for waterproofing systems Type A, B and C and specify at every stage of a project.

## Waterproofing Basements with Type C membranes

Wykamol are the only UK manufacturers of HDPE Cavity Drain Membranes and our extensive range offers varying stud heights, for different drainage capacities and membranes with or without mesh, suitable for a range of finishes. For product codes on Cavity Drain Membranes and Ancillaries please see overleaf.

- Creates a dry habitable living space in areas previously suffering from damp/wet conditions.
- Waterproof, salt inhibiting, root and contaminant resistant.
- Quick to install - minimal preparation needed to wall surfaces.
- Easy to fold around windows and doors.
- Easily cut down using a sharp blade.
- Part of a type C cavity drain membrane system in line with BS8102:2009.
- Clear for easy application and fixing of wykamol CM brick and CM plaster plugs.



Watch our  
Basement  
Waterproofing  
Video



WATCH VIDEO

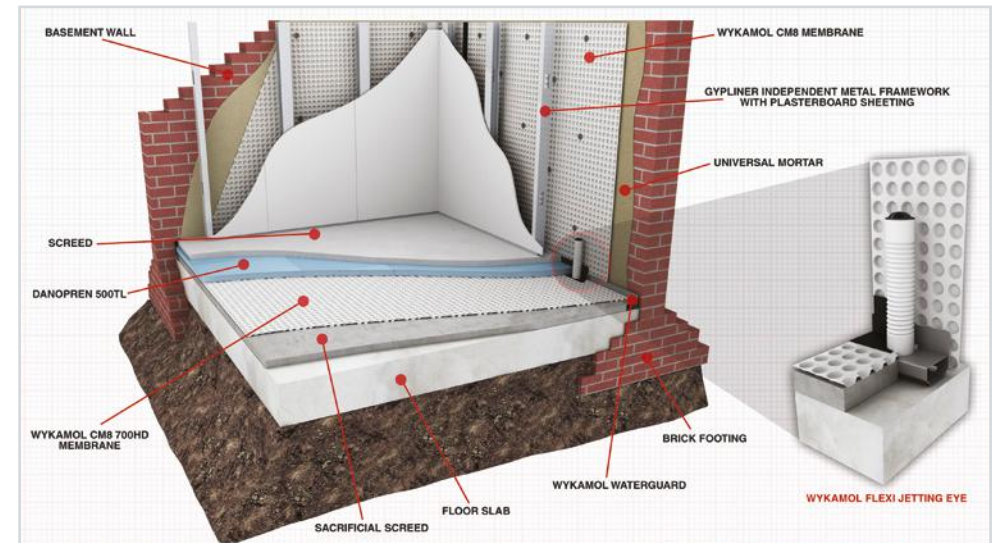
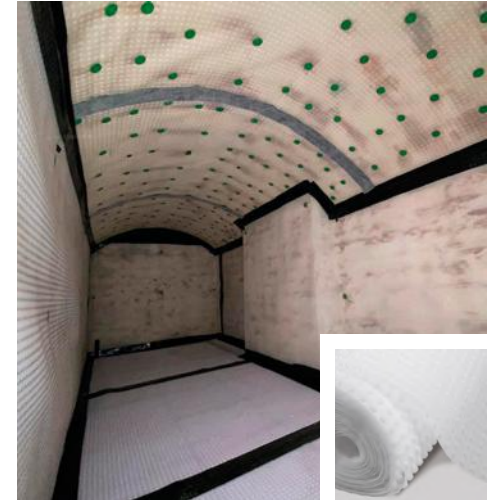
# CM8 CAVITY DRAIN MEMBRANE

CM8 Cavity Drain Membrane is an 8 mm studded membrane, suitable for Type C waterproofing and delivering a grade 3 environment to BS8102:2009 and NHBC Chapter 5.4. CM8 is available in both 500g or 700g densities.

We recommend using the CM8 HD700 when a heavier, denser membrane is deemed necessary by the Wykamol Technical Department. Please always take advice from our Technical Experts when making product selections.

## ADVANTAGES

- Creates a dry, habitable living space in areas previously suffering from damp/wet conditions.
- Waterproof, salt inhibiting, root and contaminate resistant.
- Quick to install - minimal preparation needed to wall surfaces.
- Easily cut down using a sharp blade.
- No drying out process - redecoration can occur immediately.
- Little or no damage to the existing structure.
- Low and high temperature tolerance.
- Part of a type c cavity drain membrane system in line with BS8102:2009.
- Clear for easy application and fixing of wykamol plugs.





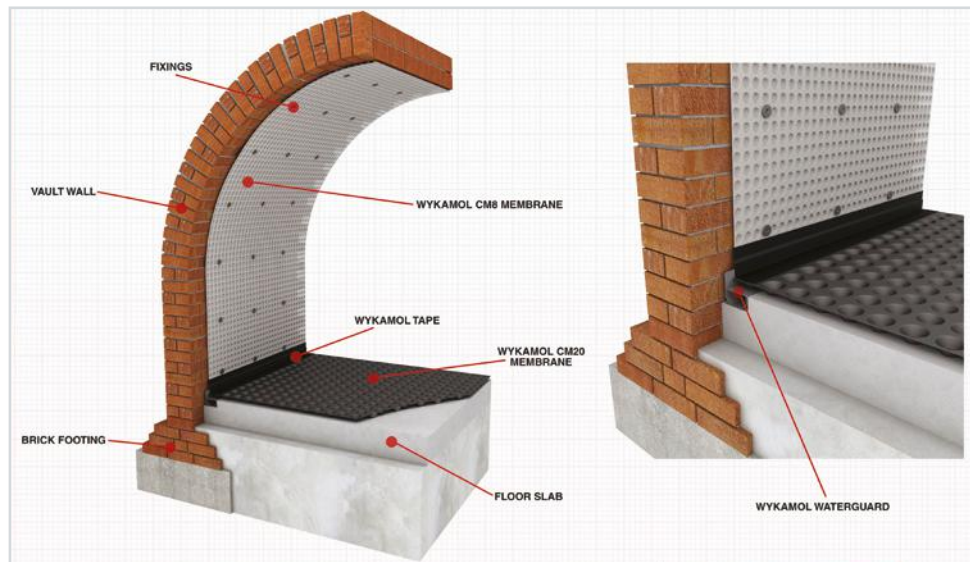
## CM20 CAVITY DRAIN MEMBRANE

The **CM20 Cavity Drain Membrane** is a 20mm studded membrane, suitable for **Type C waterproofing** and delivering a **grade 3 environment** to BS8102:2009 and NHBC Chapter 5.4.

CM20 is the highest drainage capacity membrane in the Wykamol Waterproofing range.

### ADVANTAGES

- Part of a type C cavity drain membrane system in line with BS8102:2009.
- Gives a high water void volume of 14 litres/m<sup>2</sup>.
- Quick to install - easy to roll out along floors.
- Creates a dry, habitable living space in areas previously suffering from damp or wet conditions.
- Easily cut down using a sharp blade.
- Waterproof, salt inhibiting, root and contaminate resistant.
- Little or no damage to the existing structure.
- Low and high temperature tolerance.
- High grade material.
- Available in rolls of 2m x 20m and 2m x 10m\* (\*only 20 kg in weight)



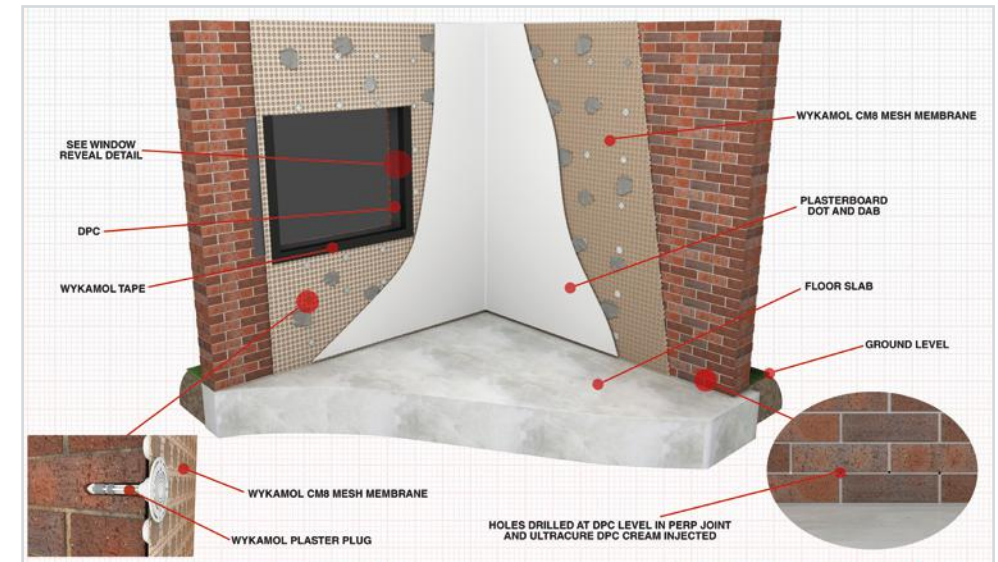
## CM8 MESH CAVITY DRAIN MEMBRANE

**CM8 Cavity Drain Mesh Membrane** is a 8 mm studded membrane incorporating a tough HDPE mesh lathing welded to the front face, allowing the direct application of various plaster finishes.

Adhesive 'dabs' and plasterboards and delivering a grade 3 environment to BS8102:2009 and NHBC Chapter 5.4.

### ADVANTAGES

- High performance bonded mesh Part of a type C cavity drain membrane system in line with BS8102:2009
- Waterproof, salt inhibiting, root and contaminate resistant. creates a dry, habitable living space in areas previously suffering from damp/wet conditions.
- Easily cut down using a sharp blade.
- Easy to fold around windows and doors.
- Quick to install - minimal preparation needed to wall surfaces.
- No drying out process - redecoration can occur immediately.
- Little or no damage to the existing structure.
- Can take a direct plaster or dot and dab



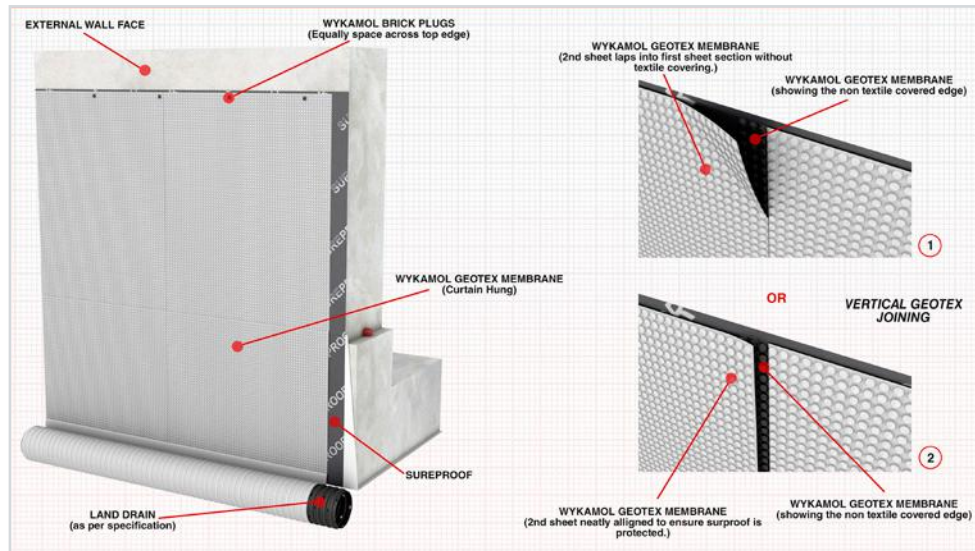
# CM8 GEOTEXTILE CAVITY DRAIN MEMBRANE

The dual layers comprise of the Wykamol 8mm studded HDPE membrane and a nonwoven geotextile manufactured from UV stabilised, high tenacity, virgin polypropylene fibres that have been mechanically entangled to provide high strength.

High extensibility, high loft and excellent abrasion characteristics. The geotextiles are also thermally treated to reduce thickness while maintaining excellent mechanical properties.

### ADVANTAGES

- Ideal Radon Barrier
- Suitable for use with all construction types.
- Drains off water before reaching the waterproof coating.
- Combined drainage and protection board.
- Easy handling and rapid installation.
- Rugged, durable construction with thermal insulation benefits.
- Filtration layers prevents silting-up.
- High compressive strength and drainage capacity.
- Allows back-filling with excavated earth.
- Withstands stress and movement in the background.



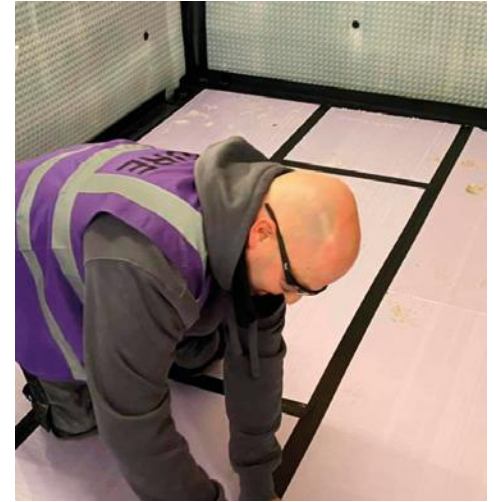
# HIGH LOAD THERMAL SPACER

Wykamol HIGH LOAD Thermal spacer has been specifically developed to assist in the installation of internal waterproofing systems for basement structures.

This high compressive strength material 500KPa has a very impressive long-term compressive creep property of 225KN/m<sup>2</sup>, meaning that even after 50 years the material will only compress by 2% if it is loaded at 225KN/m<sup>2</sup>.

### ADVANTAGES

- The high load spacer can also be used as a protection board for Wykamol external type A waterproofing systems. Applied externally, the board offers protection, insulation and drainage.
- The Wykamol high load thermal insulation boards have been developed to be installed above the concrete basement floor slab and under the floor screed. The boards are 50mm thick so can be installed to create an insulated drainage layer that finishes flush with the internal perimeter drainage gully.
- The boards are grooved on one surface, 6mm x 6mm at 25mm spacing, to assist with drainage.
- The edges of the boards have a shiplap profile to minimise the risk of screed passing through any gaps between the boards that may



Thickness (mm)	Nominal Area (mm)	Effective Area (mm)	Edge Treatment
50	1200 x 600	1185 x 585	15mm Shiplap Edge

Property	Standard	Unit	Value
Compressive Stress at 10% deformation	EN826	KN/M <sup>2</sup>	500
Compressive creep (50 years @ 2% deformation)	EN12087	KN/M <sup>2</sup>	225
Design Thermal Conductivity	EN10456	W/mK	0.034
Long term Water absorption by total immersion	EN12091	%VOL	<1
Coefficient of Thermal Expansion	-	mm/mK	0.07
Maximum Working Temperature	-	°C	75
Reaction to Fire	EN 13501-1	Euroclass	E

# PLUGS

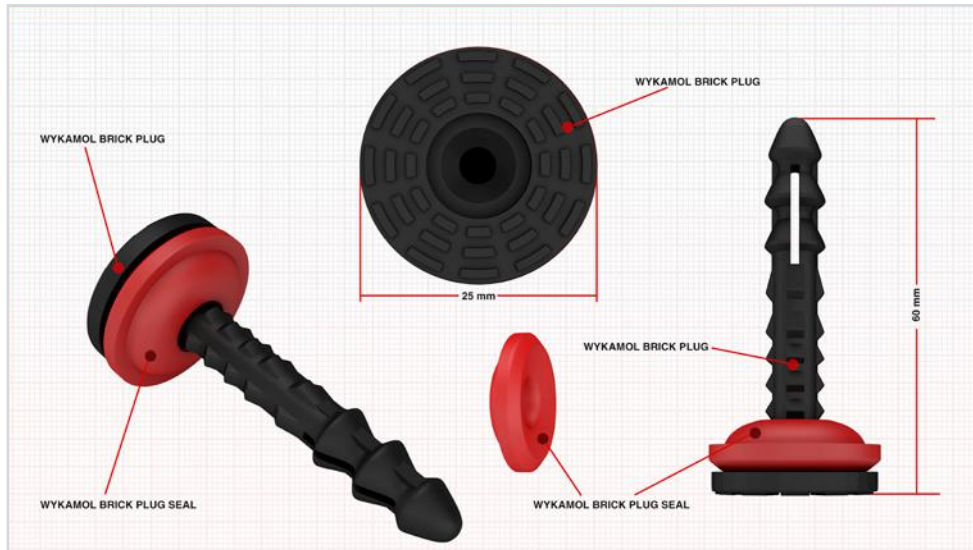
## MEMBRANE SEALING ANCILLARIES

Wykamol CM Plaster Plugs and CM Brick plugs are of a high quality and can be used in a range of applications and on multiple substrate types.

The tailor made Thermoplastic Elastomer seal ensures application of the membrane is water tight, if a normal fixing cannot be made then our COB plugs are ideal.

### ADVANTAGES

- A reinforced head to prevent damage when knocking in the plug. 60 mm in length - suitable for both single skin and cavity walls.
- Provides a waterproof seal when used with seals provided (available with or without seals).
- Available with or without seals to cater for multiple application types.
- Large 35mm (brick plugs) or 50mm (Plaster plugs) head provides optimum surface area for finishes.
- Works in conjunction with the wykamol waterproofing solutions CM membrane system
- Serrated head for improved adhesion of finishes.
- Tailor made seal specific to plug.



### CM Plaster Plugs with seals

These Plaster Plugs can be used with our mesh membrane systems. They are available in 60mm lengths and have the advantage of a seal already attached. They have a serrated head which can take plaster or dot and dab. They can also be used to secure membranes to walls in systems where a free standing frame is to be used.



### CM Plaster Plugs without seals

These Plaster Plugs can be used with our mesh membrane systems. They are available in 60mm lengths. They have a serrated head which can take plaster or dot and dab. They can also be used to secure membranes to walls in systems where a free standing frame is to be used.



### CM Brick Plugs with seals

Wykamol Brick plugs are 10mm fixings to use with membrane systems, with the advantage of a rubber seal already attached. They have a reinforced head for easy use and take a size 10 screw into the head of the plug, for battens or metal framing systems. At 60mm long, these plugs will fit into all substrates.



### CM Brick Plugs without seals

Wykamol Brick are 10mm fixings to use with membrane systems. They have a reinforced head for easy use and take a size 10 screw into the head of the plug, for battens or metal framing systems. At 60mm long, these plugs will fit into all substrates.



### COB Plugs

These plugs are ideal to use where substrates will not take a normal fixing. They are ideal for cob construction as well as all other masonry types. They have a pin which is driven down the head of the plug to give a secure anchor for membrane systems. Available sizes are 60, 90, 110 and 130mm long.

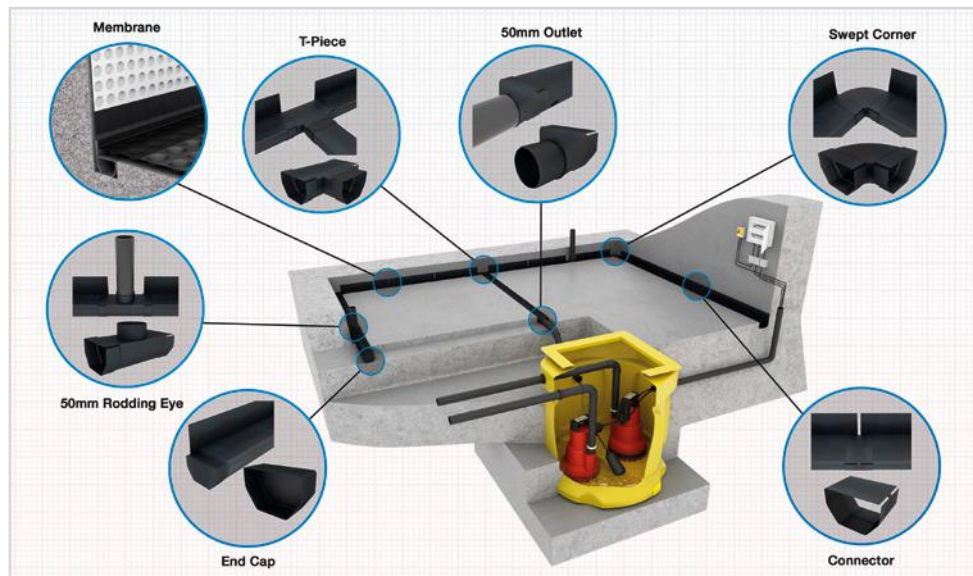


# DRAINAGE SYSTEMS

## PERIMETER CHANNEL SOLUTIONS

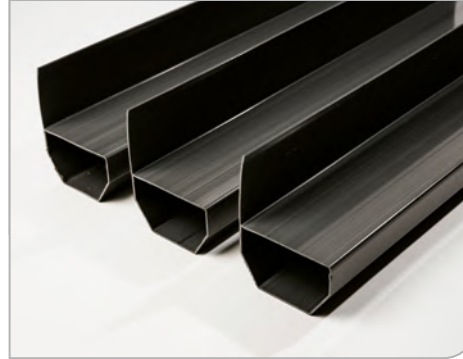
**As part of the Wykamol cavity drain membrane system, channels are a crucial part of the overall system, and are laid at wall floor junctions to remove any water entering the structure.**

These channels are designed with pre-determined water entry points into the rear of the channel. They either come with a flange upstand system or flangeless depending on the type of foundation that you will be working with. Channels come with various accessories to aid the system, some of which are covered on the following pages.



### Waterguard

Wykamol Waterguard is a PVC drainage conduit designed for the control of water ingress in below ground situations. Wykamol Waterguard is fitted around the perimeter of the floor at the vulnerable wall/floor junction.



### Floor Drain

Wykamol floor drain is a PVC conduit designed for the control of water ingress in below ground situations. Wykamol floor drain can be fitted around the perimeter and also as cross floor drainage as part of a managed water removal system.



### Universal Channel

Newly designed channel outlet to remove water from the channel to the sump. This has the benefit of a 100mm outlet for high water movement or for easier installation into the sump chamber.

It also comes with a jetting eye which can be cut down to suit floor finishes. Can be used with floor drain and waterguard channels.



### 50mm Outlet

Wykamol 50mm outlet is a multi purpose outlet to take water from the waterguard or floor drain systems into a sump chamber or through a wall on a sloping site to a gully. New snap in solution is easy to install with all channel systems.



# DRAINAGE SYSTEMS

## PERIMETER CHANNEL SOLUTIONS

### Flexi Jetting Eye

The flexible jetting eye has been designed to allow the cleaning of the channel system and also as an inspection chamber. The unique flexible upstand jetting point can be easily bent to allow the channel to be used in a wall port system. It also has the benefit of allowing slabs to be laid whilst still being easily accessible afterwards.



### Extended Jetting Eye

The extended jetting eye has been designed to allow cleaning and inspection of the channel system watertight or floor drain via a push fit interlock.

Having a unique 50mm connector allows for pipework to be added to the jetting eye to access the channel system for cleaning and inspecting. It is recommended 1 jetting eye is installed every 10 to 12 metres of channels.



### Swept Corner

This corner piece allows a unique push fit to the Wykamol channels to create a 90 degree corner section which allows for easier cleaning and jetting of the system.

No sharp edges also allows for a seamless flow of water and also helps inhibit lime build up within the system itself.



### Jointing Section

This push fit joint section allows all channel sections to connect together to form a seamless passage for water to flow and also helps inhibit lime build up. This also helps reduce movement at jointing sections.



### T-Piece

The new Wykamol t-piece has been designed to connect watertight and floor drain sections together.

This can be used in cross floor drainage or as a connector to take water into a sump chamber via a floor drain section.

Easy unique push fit interlock application to enable a speedy installation.

No lips in the t-piece to inhibit lime build up.



# TAPES

## JOINTING SYSTEMS

**Good adhesion to a wide range of substrates. Good UV resistance, the softer composition makes this product highly conformable. Easy and accurate to use with little waste & no mess. High tack, remains flexible throughout its service life.**



### INSTRUCTIONS

**Surface preparation:** All surfaces should be clean, dry and free from frost, grease and loose materials. When cleaning contaminated substrates, Wykamol recommend that propan-2-ol (IPA) is used and allowed to dry prior to the application of the sealant strip.

**Application:** Apply direct from the reel onto one surface and press sufficiently along its whole length to achieve good initial adhesion. Remove backing paper and offer other surface to the sealant and push firmly to seal across the joint.

### Wykamol Tape

Wykamol Tape is a high quality, butyl, double sided tape, used to attach 2 sheets of membrane together on walls or floors. The high grade HP600 bitumen makes this a long term solution for all membrane applications.



### Rope

A 10mm bead of butyl rope. This rope is used to either wrap around the head of plugs in membrane installation, or to form a jointing waterproof seal on walls and floor membrane systems. This is a high quality rope and is covered by our **BBA Certificate**.



### Corner

Our biggest selling tape, this 150mm wide tape has many uses, but is mostly used to seal membrane from walls to floors and the channel system. Tacky on one side only, this can also be used to overtape external joints and can also be used on floor oversealing and is covered by our **BBA Certificate**.



### Overseal

This is a 75mm overseal tape used to overseal membrane systems, it can be used on walls and floors and forms an overseal detail to form a vapour barrier and waterproof seal on external taped joints. Covered by our **BBA Certificate**.



### Fibre Tape

Wykamol Fibre Tape is used to join plaster membranes together. The unique fibre backing allows for direct plaster or dot-and-dab situations. The fibre also stops any cracking of plaster on these joints. Covered by our **BBA Certificate**.



### Wykamol Gas Tape

This 115mm wide tape is used to joint our Wykamol titan bond system and form a waterproof and gas seal within the system.



# WATERPROOFING SOLUTIONS

## LGM LIQUID GAS MEMBRANE

Wykamol Liquid Gas Membrane (LGM) is a single pack, elastomeric liquid rubber membrane, specifically designed for a range of vertical and horizontal construction surfaces, generally as follows. LGM will cure to form a tough, flexible material acting as an effective barrier to the passage of vapour, damp, water, Radon and Methane gas.

- Single pack system
- Water based compounds that can be applied even to damp backgrounds
- Non-toxic, non-hazardous, solvent and plasticiser free
- Quick drying. Typically touch dry in 1 hour
- Good bond to many substrates
- Toughness, high flexibility, extensibility and good crack bridging properties
- Low water vapour permeability
- Alkali resistant. Can be applied to alkaline surfaces
- Resistant to silage acids
- Non staining and stain blocking
- Available colour, Greenwykamol CM brick and CM plaster plugs.



### TYPICAL USES

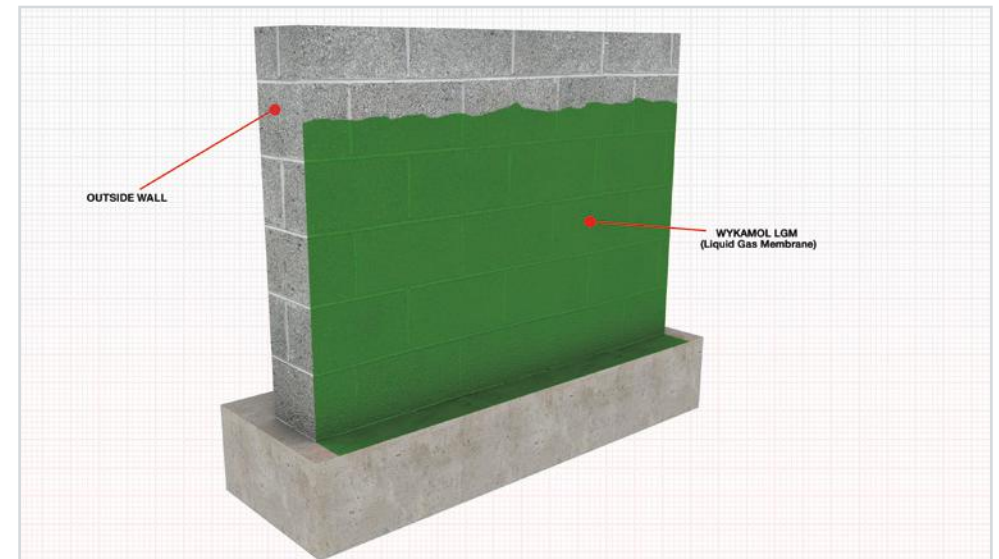
Floors, Under screeds (or above screeds), Basements, Walls, Roofs, Tiling, Water Storage, Silage Storage, Marking Paint e.g. roads, car parks, Gas Barrier, Stain Block.

## APPLICATION

The background surface should be smooth or have a light even texture. Any masonry should be flush pointed and defects in existing surfaces made good. The surface needs to be clean, sound and free from dust, loose material or free surface water. The membrane should not be applied in wet conditions or where these conditions are likely to occur before the membrane has dried. The membrane should not be applied when the temperature of the background, or the air temperature, is below 7°C.

It is sometimes advantages to pre-wet concrete or masonry backgrounds, so that these are damp but free from any water glistening on the surface, to aid wetting out of the background.

Because of the wide variety of background types and site conditions it is always advisable to check adhesion to the background by testing on a sample area before starting any job. The membrane may be applied by brush, roller or airless spray.



# DUAL ACTION

## GAS AND WATERPROOFING



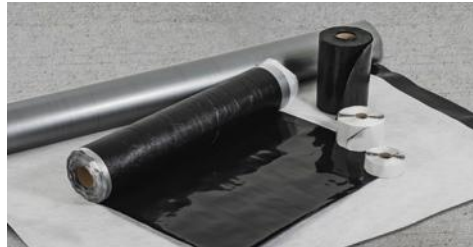
## GP TITAN TYPE A MEMBRANES

**Wykamol stock a large range of waterproofing and gas combined membrane systems with full British board of agreement certifications**

Our products have been developed to enable developers and contractors to protect new buildings against gases contained in contaminated land. They are designed in-line with current guidelines BS 8485 2015+A1:2019 in combination with our state of the art manufacturing facility. We offer sustainable and durable barrier systems, designed to protect the structure for the intended lifetime.

- Full surface contact between the membrane and concrete

- All in one protection against Methane, Carbon Dioxide, Radon, ground gases, VOCs, Hydrocarbons, air and water.
- Manufactured to meet the most up-to-date British standards BS8485:2015 and BS8102:2009.
- Exceptional chemical resistance.
- Long term durability (performance guaranteed for lifetime of the building).
- Quick and easy installation.
- Waterproofing barrier type A and ground gases all in one application.
- Super bonding self-adhesive bitumen (post-applied).



PRODUCT DESCRIPTION	CODE	PACK SIZE
GP TITAN Bond (Pre-applied)	GPTITANBOND	25m <sup>2</sup>
GP TITAN Tank (Post-applied)	GPTITANTANK	20m <sup>2</sup>
GP TITAN Loose Lay	GPTITAN	50m <sup>2</sup>
GP TITAN Liquid Gas Barrier	GPLGB	15Kg
GP TITAN Primer	GPPRIMER25	25 Litre
GP TITAN Reinforcement Flex Tape	GPRFTAPE	1.2m x 5m
GP TITAN Detailing Strip	GPDSTRIP	1m x 25m
GP TITAN Tape	GPTAPE	1 m x 15 m
GP TITAN Extension Tape	GPEXTAPE	0.3m x 20m
GP TITAN External Corner Unit	GPEXTCORNER	1
GP TITAN Internal Corner Unit	GPINTCORNER	1

# PROFLEX SYSTEM

## CRACK SEALING

## PROFLEX

**High performance joint and crack sealing system for joint and crack sealing for construction joints, expansion (movement) joints and connection joints or cracks.**

The system allows variable and high levels of movement in one or more directions, whilst maintaining a high-quality watertight seal.

### Wykamol EP Proflex Adhesive

EP Proflex Adhesive is an epoxy resin-based solvent-free, thixotropic, structural two-part building adhesive and repair mortar.

Designed to give excellent moisture tolerance and water resistance, EP Proflex Adhesive is designed for use at temperatures of 50C and 300C. Specifically developed with a lower mixed viscosity for easier workability at low temperatures and excellent adhesion to damp surfaces, which is usually common within the building industry.

### Characteristics/Advantages

- 3:1 mixing ratio by weight or volume
- Thixotropic, ideal for vertical & overhead applications
- Ideal for repairing corners and edges
- Gap, joint and crack filling
- No shrinkage
- Impermeable to liquids
- Bonds to damp surfaces
- Excellent adhesion even on damp surfaces
- High impact resistance and mechanical strength
- Good colour for easier colour matching



EP Proflex Adhesive bonds well to most building materials including concrete, stone, brick, wood, glass and metal. Due to its excellent adhesion, it can also be used for adhering building materials, including brick slips, onto glass reinforced plastic (GRP) bases.

### Application Areas

- Joint waterproofing tape for walls
- Floor junctions
- Construction joints
- Movement joints
- Expansion joints
- Structural joints
- Connection joints

**PROFLEX**  
HIGH PERFORMANCE JOINT  
& CRACK SEALING SYSTEM



# ROOF WATERPROOFING SOLUTIONS

## HYDRADEK PU

**HYDRADEK PU** is a high elastomeric waterproofing liquid membrane, that is the perfect solution for complicated & flat roofs, as well as walkways and balconies. The HYDRADEK system includes a pre mixed polyurethane coating, which once catalysed with the fleece forms an homogenous and continuous elastic waterproof membrane without any need for joints or overlapping tapes.

Because of its unique properties, HYDRADEK is easily applied to a wide variety of surfaces, and with the addition of an integral hardener it's the perfect solution for podium & balcony foot traffic zones. Super bonding self-adhesive bitumen (post-applied).

### ADVANTAGES

- NHBC (National House Building Council) approval, and green roof endorsed.
- BBA approved, with an efficacy period in excess of 25 years.
- Totally seamless, without any laps or joints.
- Suitable for areas of high traffic.
- Cold, brush or roller applied, no need for heat or other accelerators.
- The homogenous system of two coats of PU interleaved with mesh results in a totally waterproofed surface.

- Can be applied to most surfaces, and is ideal for both new and older established flat roofs.
- Suitable for use all year round.
- For the waterproofing of most roofs/balconies/podiums/foot traffic areas, on both metal and asbestos roofs.

### SYSTEM COMPONENTS

- HYDRADEK PU
- HYDRADEK PRIMER
- HYDRADEK TOP COAT
- HYDRADEK THICKENER
- HYDRADEK FLEECE

**HYDRADEK PU** is a single component liquid made up from pure polyurethane, which once catalysed forms a continuous elastic membrane, without any joints/overlapping, and on smaller roofs without any integrated HYDRADEK FLEECE required.

**HYDRADEK PRIMER** has been specifically designed to increase bonding and improve the surface levelling of substrates such as concrete, mortar, or plywood prior to the application of the HYDRADEK PU

**HYDRADEK TOPCOAT** is a two component polyurethane resin that provides a hard and durable


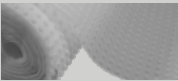



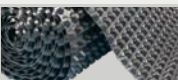







surface for high traffic zones, as well as offering UV radiation protection on exposed (non covered/shielded) surfaces.



**HYDRADEK THICKENER** has been specially developed as a liquid additive for the HYDRADEK PU, to use on vertical or sloped surfaces, giving increased thixotropic anti slump properties during the drying/curing process.

**HYDRADEK FLEECE** is a spun glass fibre, for use with HYDRADEK PU in large roofing/flat surface applications where it is necessary to achieve an homogeneous bond/seal.



# WATERPROOFING SOLUTIONS


PRODUCT	CODE	DESCRIPTION	PACK SIZE
	CM32X20	CM3 MEMBRANE 2m x 2m, BLACK	40m <sup>2</sup>
	CM82X20	CM8 MEMBRANE 2M X 20M, CLEAR	40M <sup>2</sup>
	CM82.4X20	CM8 MEMBRANE 2.4M X 20M, CLEAR	48M <sup>2</sup>
	CM8MESH2X10	CM8 MESH MEMBRANE 2M X 10M, CLEAR	20M <sup>2</sup>
	CM8MESH2X20	CM8 MESH MEMBRANE 2 M X 20 M, CLEAR	40M <sup>2</sup>
	CM202X10	CM20 MEMBRANE 2M X 10M, BLACK	20M <sup>2</sup>
	CM202X20	CM20 MEMBRANE 2M X 20M, BLACK	40M <sup>2</sup>
	SUREPRIME	SUREPROOF MEMBRANE PRIMER	5L
	SUREPROOF	SUREPROOF EXTERNAL MEMBRANE 1M X 20M	20M <sup>2</sup>
	SURETAP	SUREPROOF TAPE 300MM X 20M	1
	ANTI-LIME SEALER	ANTI-LIMESEALER	2L
	CMBRICKSEAL200	BRICK PLUGS WITH SEALS	200
	CMPLASTERPLUG200	WYKAMOL PLASTER PLUG (NO SEALS)	200

PRODUCT	CODE	DESCRIPTION	PACK SIZE
	CMPLASTERSEAL200	WYKAMOL PLASTER PLUG WITH SEALS	200
	WYKPLUGSEALS	PLUG SEALS	200
	WYKCSTRIP20	WYKAMOL CORNER STRIP 150mm x 20m	1
	WYKCOVER	WYKAMOL OVERSEAL TAPE 75mm x 22.5m	1
	WYKFIBRE	FIBRE TAPE FOR MESH MEMBRANES 115mm x 25m	1
	WYKROPE	WYKAMOL ROPE 10mm x 5m	1
	WYKTAPE	WYKAMOL TAPE 28m X 22m	1
	PUMONLY3	WYKAMOL PUMP 6.8	1
	PUMONLY4	WYKAMOL PUMP 12.4	1
	SUMPFLO/AC	SINGLE PUMP SUMP KIT (6.8), TWIN OUTLET + METAL LID	1
	SUMPDOUBLE303TO/AC	DOUBLE PUMP SUMPKIT (2x 2.5) TWIN OUTLET + METAL LID	1
	SUMPDOUBLEBBPS30ITO/AC	PUMP SUMP KIT (2 x 6.8), BATTERY BACKUP, TWIN OUTLET + METAL LID	1
	SUMPDOUBLEBBPS303TO/AC	PUMP SUMP KIT (2 x 12.5), BATTERY BACKUP, TWIN OUTLET + METAL LID	1

# WATERPROOFING SOLUTIONS

PRODUCT	CODE	DESCRIPTION	PACK SIZE
	AQUASAFE	AQUASAFE ALARM WITH BATTERY BACKUP AND BUILT IN SERVICE ALARM	1
	WGCHANNEL	WATERGUARD CHANNEL	1
	FDCHANNEL	FLOORDRAIN CHANNEL	1
	UCO	UNIVERSAL CHANNEL OUTLET	1
	WGDRAINOUT	50MM OULTET	1
	WGJETEYE	JETTING EYE	1
	WTPCE	T-PIECE	1
	WGJETEXT	FLEXI JETTING EYE	1
	WCORNER	SWEPT CORNER	1
	WCONNECTOR	JOINTING SECTION	1
	ECLIPSE	HEAT RECOVERY VENTILATOR UNIT KHRV150 ALSO AVAILABLE EXTENSION KIT KHRV150EXT	1
	WATERSTOP	WATERSTOP FAST-SETTING, PLUGGING WATERPROOF MORTAR	5KG
	HYDRA20	HYDRADRY TANKING SLURRY	20Kg BAG

# ONLINE VIDEO INSTRUCTION GUIDES

PRODUCT	CODE	DESCRIPTION	PACK SIZE
	HYDRAFLEX20	PREMIUM ELASTOMERIC WATERPROOF MEMBRANE FOR BRICKWORK, CONCRETE AND STONE	20Kg

**Basement Waterproofing Video**



SCAN ME

WATCH VIDEO



SCAN ME

**Wall-Tie Installation Video**

WATCH VIDEO

**Ultracure Application Video**



SCAN ME

WATCH VIDEO



SCAN ME

**Crack Stitching Bars Installation Video**

WATCH VIDEO

Wykamol have provided a series of useful and informative online instruction video's, use your mobile phone to scan the QR Codes opposite and watch our handy video guides on the go.



# WYKAMOL

## CONTRACTORS TRAINING COURSES

### TAP INTO SOME OF THE BEST TECHNICAL ADVICE IN THE COUNTRY

The Wykamol Group like to ensure that contractors are installing our products to the highest possible standard and to achieve this, we arrange regular and well attended Contractor's Training Courses throughout the country. Please ask in branch or contact Head Office for information on course availability in your area.

Wykamol Contractor's Training Courses are suitable for start-up contractors and established contractors who would like to become a Wykamol Registered Installer\* and apply to become a member of CGS - Construction Guarantee Solutions.

\*Becoming a Wykamol Registered Installer is a process which begins with attending a Contractor's Training Course and includes inspection of at least 3 on-site projects. Contractors are then entered into our database against their chosen Merchant Partner and Branch. The awarding of Registered Installer status is at the discretion of the Wykamol Group's Technical Department. The Wykamol Group Limited are not responsible for any work completed by a Registered Installer.



# CGS LIMITED

## INSURANCE BACKED GUARANTEES

### WHAT IS CGS?

CGS or Construction Guarantee Solutions issue insurance backed guarantees to homeowners when a member of CGS completes a project on their home. Homeowners are insisting on insurance backed guarantees more and more, as the guarantee is valid in every eventually, even if the contractor is no longer trading. Considering that 70% of all companies go out of business within 20 years, why would you take the chance?

Sticking a pin into a phone book gives you a 20-1 chance of finding a contractor good enough to be backed by an insurance company authorised and regulated by the FCA.

#### When comparing, quotes ask competing contractors which of these they can offer (if any):

- Actual insurance period of 10 years (with the option of extending this period when it expires)
- Independent checking for technical competence

- Health and safety competence and financial stability
- Underwriter that is authorised and regulated by the FCA
- Access to the Financial Ombudsman Service
- Insurance certificate for each property
- Security of the Financial Services Compensation Scheme
- NHBC and Zurich Approved
- Insurance Premium Tax (IPT) applied (as required by law for all genuine insurance)
- Automatic free assignment on sale of property
- Protection against contractor failure for any reason

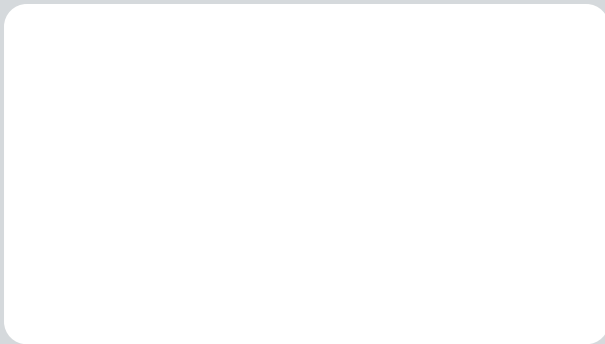
For more information on becoming a member of CGS and issuing insurance backed guarantees, contact your Area Technical Manager.

**Ask in Branch for a list of Contractors who can offer CGS Guarantees.**





# The Ultimate Building guide, a solution for every problem



#### Wykamol Group

Unit 3, Boran Court, Network 65 Business Park, Hapton, Burnley, Lancashire BB11 5TH  
t: +44 (0)845 4006666 f: +44 (0)845 4003333

[www.wykamol.com](http://www.wykamol.com) e: [info@wykamol.com](mailto:info@wykamol.com)



**Basement  
Waterproofing**  
ASSOCIATION



**PCA**  
Property Care  
ASSOCIATION



**BBA**  
APPROVED  
INSTALLER  
FOR  
WATERPROOFING  
SOLUTIONS



**WYKAMOL**  
WATERPROOFING  
SOLUTIONS