

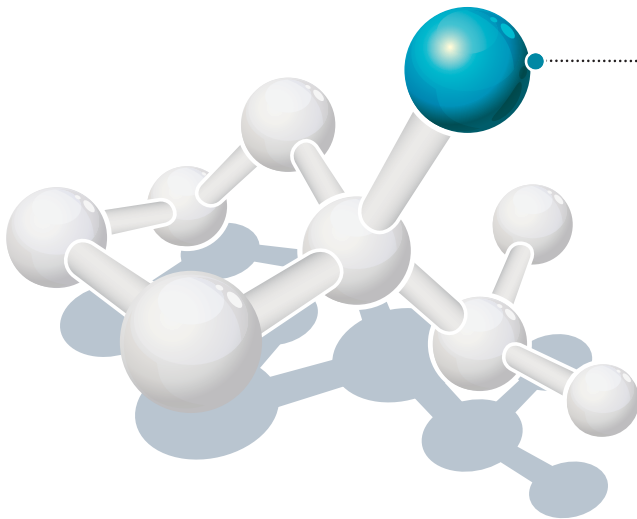
Abloy UK
School Street
Willenhall, West Midlands
WV13 3PW

Phone +44 (0)1902 364500
Fax +44 (0)1902 364501
Email sales@abloy.co.uk
www.abloy.co.uk

Direct line - Sales Office
0845 071 3844 (UK only)
Direct line - Customer Services
0845 071 3855 (UK only)
Calls charged at local network rates

From product supply through to planned and implemented door control solutions... it's in our DNA

We are the UK's leading experts on door locking and functionality. Our product range, including industrial locking, connects like the molecular diagram below, to form complete, secure, compliant and lasting solutions trusted by organisations around the UK and Ireland for whom compromise is not an option.



Product supply >

Simply order the products you need from our friendly and knowledgeable staff

Expertise >

Helpful advice when you need it from our door control specialists

Planning and specification >

For larger projects, call on us for full service assessment and planning of your needs, from fire exiting and compliance to master key strategies

Due to a continuous programme of development, Abloy UK reserves the right to make alterations without notice. For technical reasons connected with colour reproduction the colours shown may vary slightly from those of the product. All dimensions provided within this catalogue are approximate and for guidance only.

E. & O. E. For terms and conditions of sale, please refer to the current price list. Abloy UK markets high quality products and accessories for security applications. Our customer base provides solutions to a broad spectrum of public and private organisations throughout the UK and Ireland.



INDUSTRIAL LOCKS FOR OEM APPLICATIONS

The choice is yours. A large range, with a selection for virtually any application, giving the OEM real flexibility - and the reassurance of providing products with effective locking.



VERSION: AUGUST-11

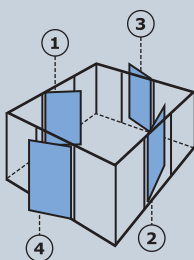
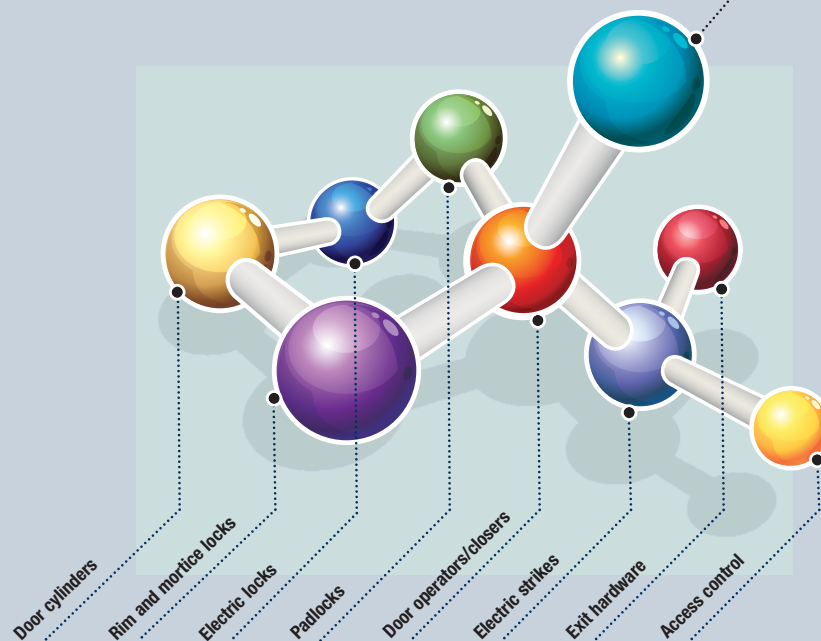
Uniclass L418184
CI/SfB (31.59) Xt7

Integrated door control solutions... it's in our DNA

Abloy UK are the leading locking provider in the UK and Ireland and we are pleased to welcome you to this catalogue of our products.

Industrial locking for OEM forms just part of our total service, with a wide range of products and capabilities that integrate perfectly - like our molecular diagram below - to provide a complete door security and functionality solution. There is a catalogue for every category below and you can find our products online at www.abloy.co.uk.

To gain advice or expertise with planning, specification and implementation of any door solution, call us on +44 (0)1902 364500.



Handing

The correct hand of a door can be selected using this diagram. Standing inside the box looking out, choose your door hand from 1 to 4, determined by the hinge side and if the door opens inwards or outwards.



The key flag logo confirms that ABLOY® products have a Finnish origin

Finnish-made ABLOY® products are known worldwide for their high quality and performance; globally ABLOY® is the leader in high quality locking solutions. You can be confident that the products in this catalogue have been manufactured in Finland to the highest standards.

Versatile, reliable, innovative

Locking for the OEM industry

All of the cam locks featured in this section are offered in various sizes with a choice of key mechanism, making them ideally suited to a wide range of applications where valuables may be behind small doors or enclosures, eg lockers, parking meters, gaming machines or cash boxes. You will find a cam lock to fit almost any size, thickness or type of metal or wooden door.

The furniture lock range offers all the normal functions expected of this type of lock – deadbolt, latchbolt, hookbolt and clawbolt.

Push button locks are designed for sliding doors of glass, wood or metal construction. However, the locking operation lends itself to solving many problems associated with small applications.

With ranges from ABLOY®, ASSA and STS, all our OEM selections are designed and built to high standards and are widely used by manufacturers across the world.

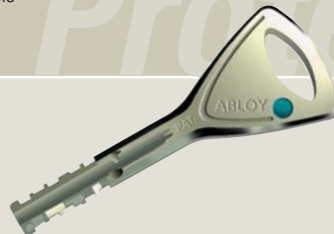


Protec

This two way mechanism incorporates all the latest technology and is fully patented in the UK and Ireland until 2019.

- A virtually pickproof mechanism that's impossible to manipulate
- Exceptionally smooth key entry and operation
- Thin, light but incredibly strong key
- Extensive master keying possibilities
- Can be master keyed and keyed alike with cylinders, cam and furniture locks as well as padlocks.
- Choice of security levels

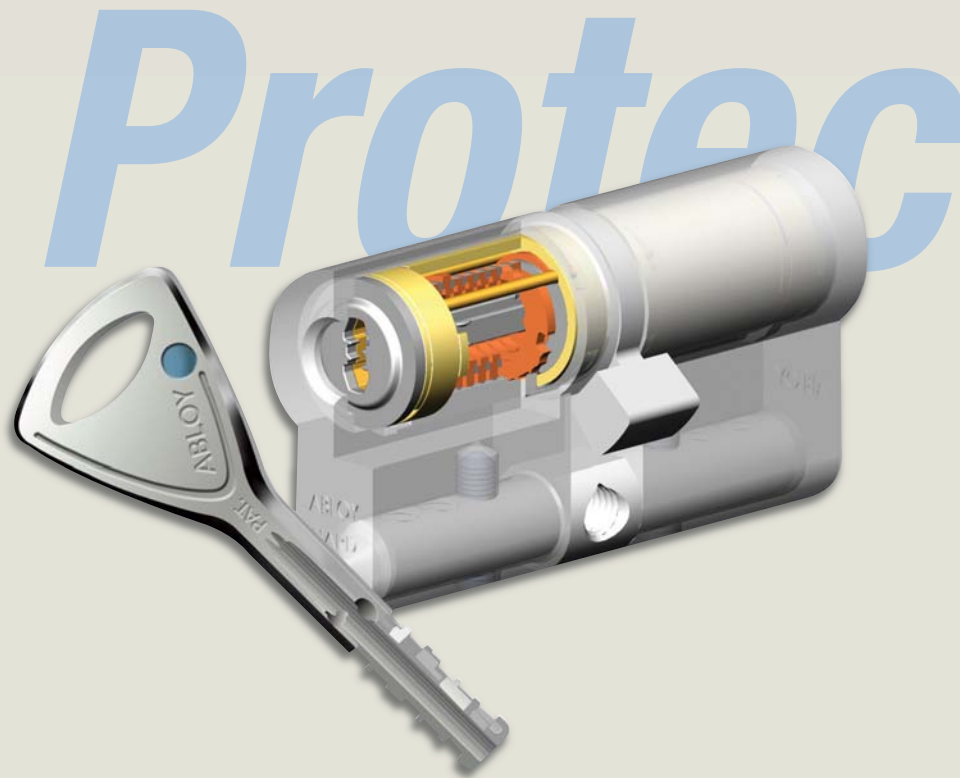
Protec



Product Statement

All ABLOY® cylinders use a rotating disc principle and are therefore immune to the practice of "bumping".

This technique involves the manipulation of the pins inside the lock and, as ABLOY® cylinders do not use pins, this technique is totally ineffective.



Locks available with Protec mechanisms



To order a Protec mechanism, add /PT after the part number

Sentry

The latest one way mechanism dedicated to padlocks, cam and furniture locks operating with a strict key registration system, ensure that keys cannot be cut without the correct authorisation.

Recommended as an upgrade to the earlier CLASSIC, HIGH PROFILE and EXEC systems,

SENTRY has considerable advantages over its predecessors.

- A bump proof mechanism
- A smoother more reliable operation
- 365 million different combinations combinations and master keying possibilities
- A large symmetrical double sided key makes key entry much easier
- A patent in the UK and Ireland on the mechanism and key until 2027 ensures against the unauthorised copying of keys

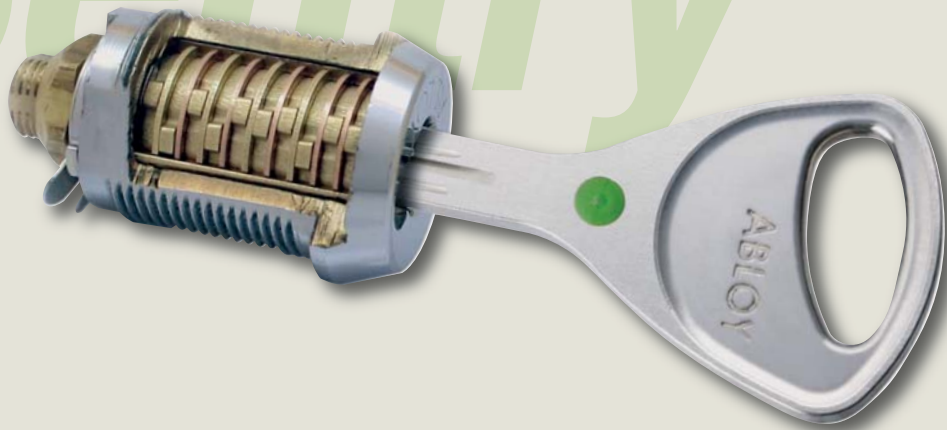
Product Statement

All ABLOY® cylinders use a rotating disc principle and are therefore immune to the practice of "bumping".

This technique involves the manipulation of the pins inside the lock and, as ABLOY® cylinders do not use pins, this technique is totally ineffective.



Sentry



Locks available with Sentry mechanisms



Available from October '14
To order a Sentry mechanism, add /SY after the part number

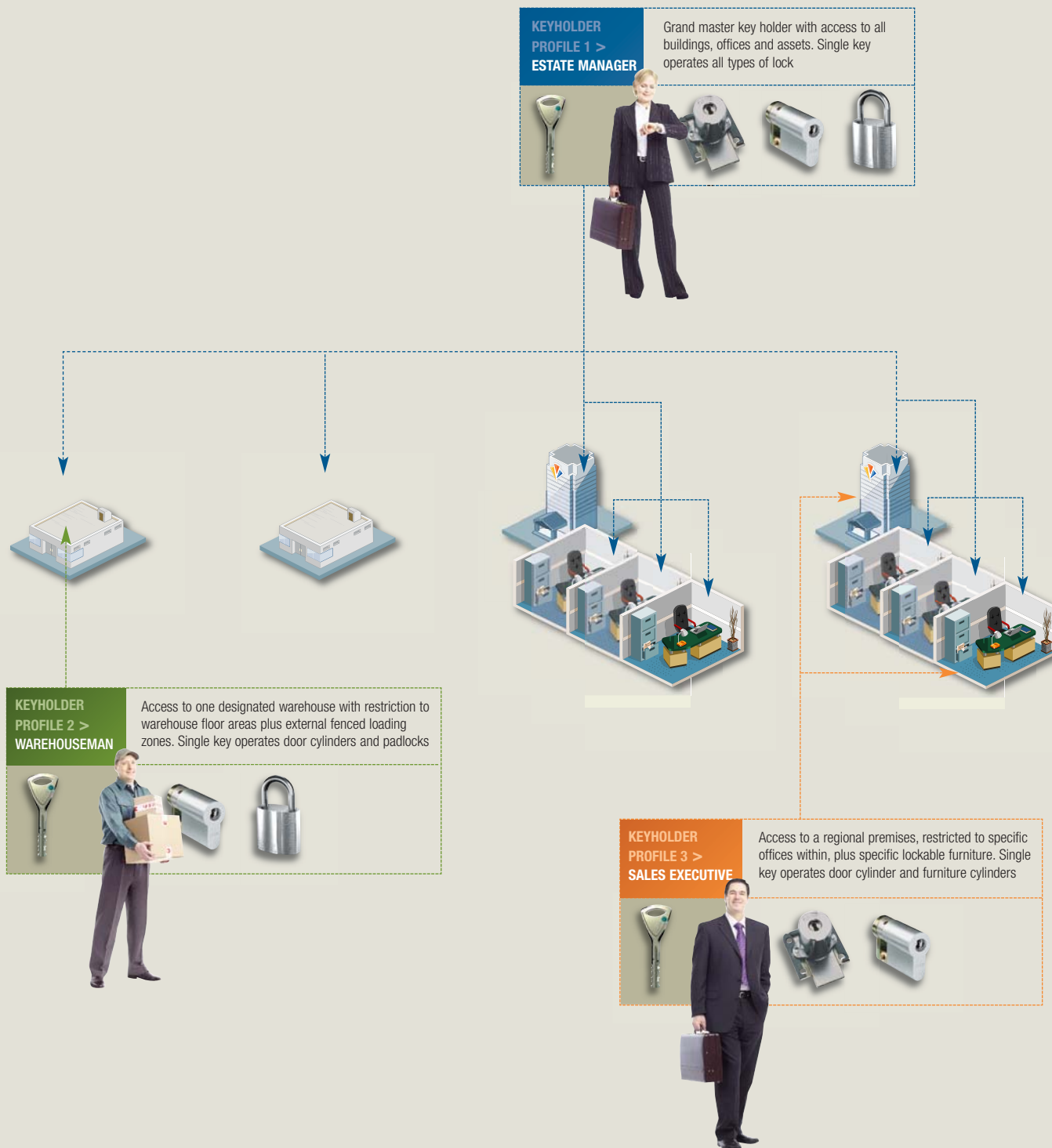


Master key solutions through ABLOY® cylinder mechanisms

ABLOY® key mechanisms are particularly suited to master key suites, providing keyholding simplicity to often complex requirements. The simplest solution is a master key system with all locks operated by individual keys and an overriding master key operating all locks. Our solutions also encompass highly sophisticated key architecture, providing multi-level restriction with multiple master keys operating

across many sites, overridden by a single grand master key.

A snapshot within a typical master key solution is illustrated below, with the level of key access dictated by seniority of position in the organisation as well as by access requirements.

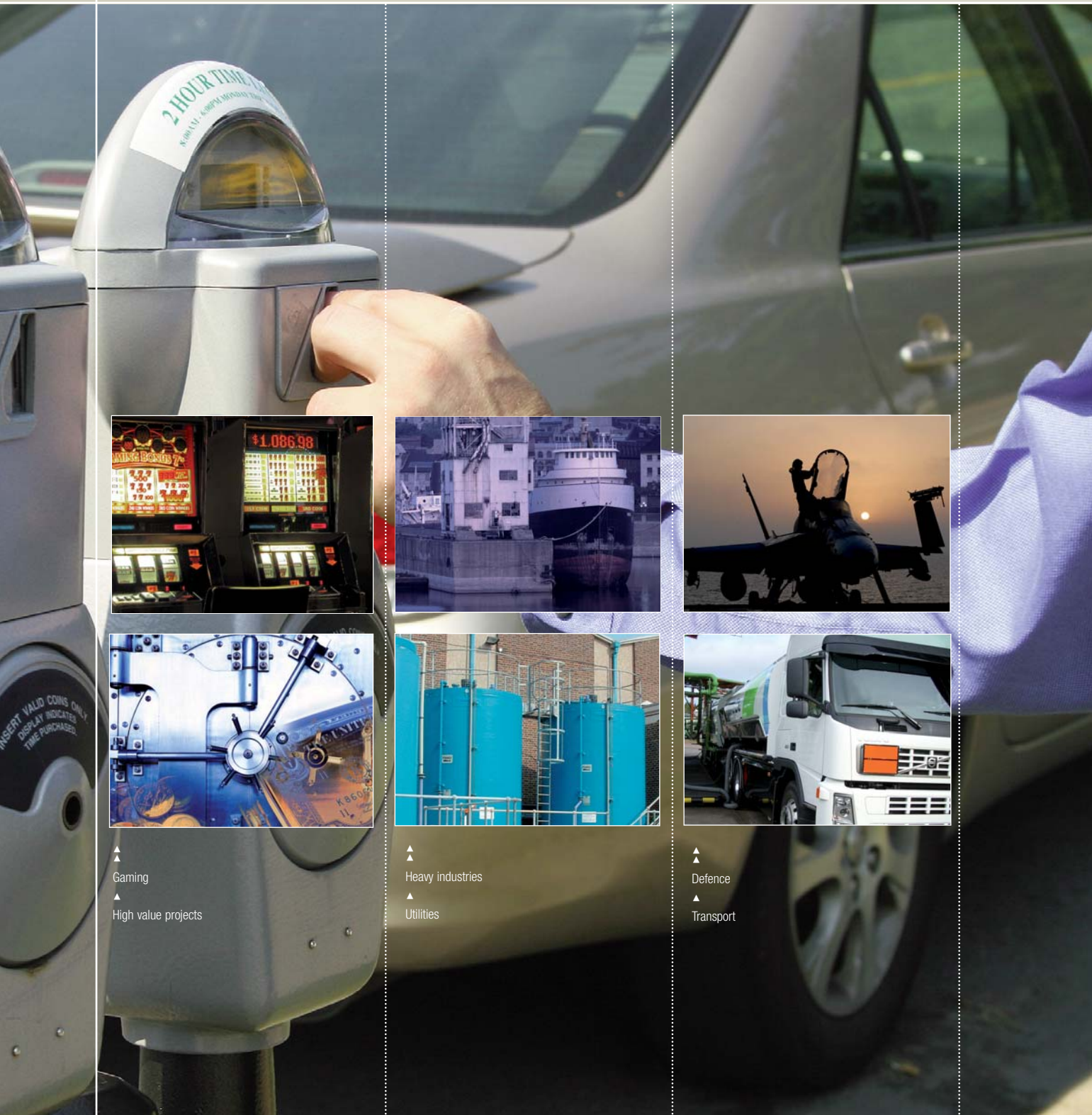


A wide range of applications and environments

The extensive range of ABLOY® cam locks includes locks in a variety of sizes and different modes of operation, making them ideally suited to a wide range of applications. We offer cam locks to fit almost any size, thickness or type of metal or wooden doors in the most demanding security institutions and industries.

Manufacturers choose ABLOY® locks to secure their high-quality, high-value products such as:

- vending machines
- parking meters
- safe deposits
- gaming machines
- mobile phone base stations
- transport containers
- switch cabinets
- rifles
- pay phones
- museum display cabinets



▲ Gaming
 ▲ High value projects



▲ Heavy industries
 ▲ Utilities



▲ Defence
 ▲ Transport

Cam lock

- ▼ CL100
- ▼ CL101
- ▼ CL103
- ▼ CL104
- ▼ CL105
- ▼ CL106

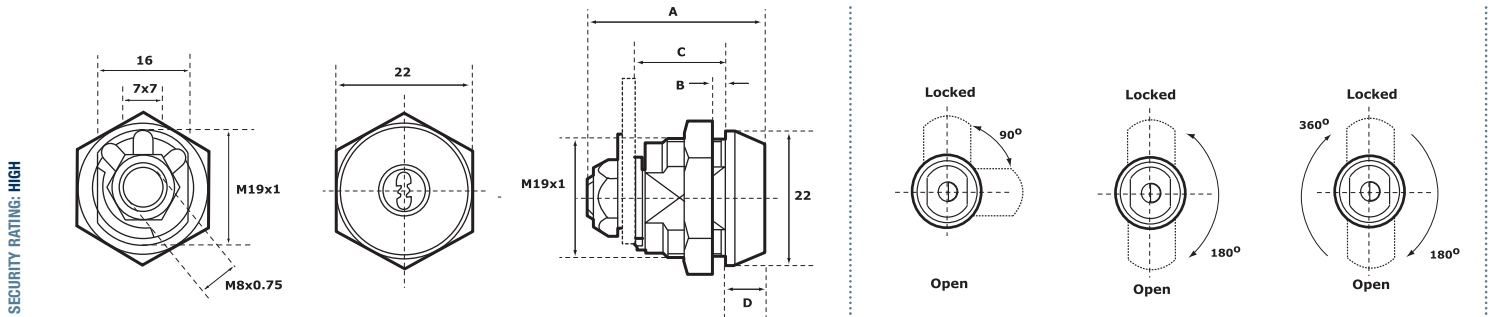
- ▼ CL107
- ▼ CL108

General

All cylinder housings are chrome plated brass. (CL105 is case-hardened chrome plated steel with first disc nickel plated case hardened steel).
Cylinder drums and end nuts of brass.
Control washers, nut lock washers and hex nuts of zinc plated steel.

Ordering

Please ensure that you quote the cylinder mechanism and cam turn required. Cam arms and fitting plates supplied separately – please see page opposite.

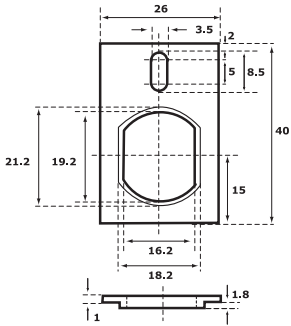


SECURITY RATING: HIGH

SPECIFICATION	CL105	CL104	CL107	CL100	CL101	CL103	CL106	CL108
Length mm (A)	33	33	33	37	37	43	43	30.5
Max door thickness mm (B)	9.5	9.5	9.5	13.5	13.5	19.5	19.5	5.5
Cam distance mm (C)	18.5	18.5	18.5	22.5	22.5	28.5	28.5	14.5
Collar mm (D)	6.5	6.5	6.5	6.5	6.5	6.5	6.5	8
No. of discs	9	9	9	11	11	11	11	7
Key removable locked position only	•	•		•		•		•
Key removable locked and unlocked position			•		•		•	
Cam turns:								
90°	•	•		•		•		•
180°	•	•		•		•		•
360°			•		•		•	
Cylinder mechanism								
EXEC (EX)	•	•	•	•	•	•	•	
Protec (PT)	•	•	•	•	•	•	•	•
Sentry (SN)	•	•	•	•	•	•	•	•

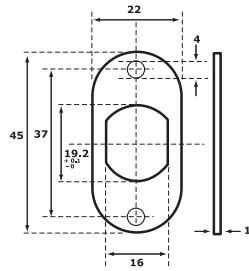
455328

Fitting plate for use on inside of wooden door to prevent lock rotating



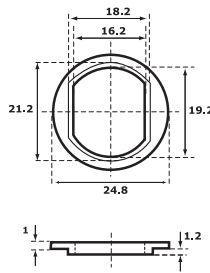
466091

General purpose fitting plate



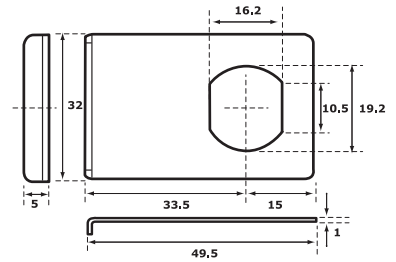
434613

Fitting plate used mostly when replacing Scandinavian specification cam locks



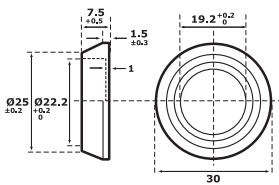
GL1

Fitting plate for glass doors



804757

Bezel protector

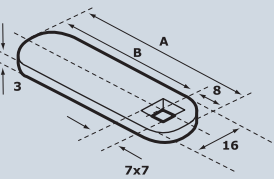


4841003

Plastic protection ring for fitting between cam lock and face of glass

Straight Cam

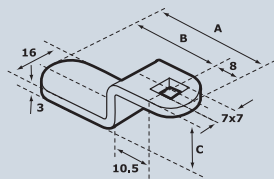
Nickel plated steel finish



DIMENSIONS	A	B
455608	26	18
434815	30.5	22.5
434869	33	25
455322	35	27
434609	38	30
434794	40	32
455556	45	37
455548	48	40
455494	53	45
455797	58	50
455606	68	60

Offset Cam

Nickel plated steel finish

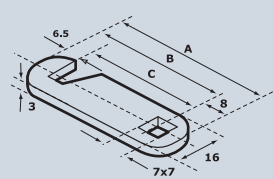


DIMENSIONS	A	B	C
455678	32	24	13.3
434959	33	25	26.5
455333	35	27	5
434928	35	27	6.5
455499	35	27	9.5
455525	35	27	10.5
434816	36	28	12
434799	36	28	22
455557	37	29	18.5
434766	38	30	15

DIMENSIONS	A	B	C
434667	38	30	7
435097	40	32	5
434702	40	32	19
434635	45	37	5
434700	45	37	8
434852	45	37	13.3
434757	48	40	19
434788	50	42	12.5
455461	61	53	18

Hooked Cam

Nickel plated steel finish



DIMENSIONS	A	B	C
455514	31	23	16.5
434605	32	24	17.5
455332	35	27	20.5
455492	42.5	34.5	28
434818	47.5	39.5	33
455780	58	50	43.5
455549	60.5	52.5	46

General

- Cylinder housing chrome plated zinc
- Lockcase, striker plate and bolt of nickel plated steel
- Latchbolt (OF217 and OF234) of brass

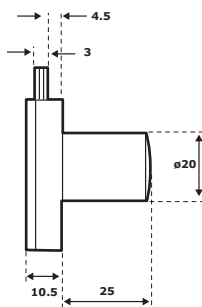
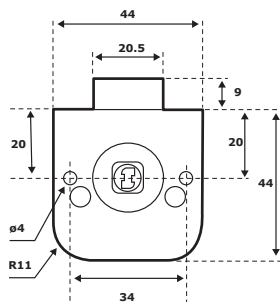
Ordering

- Please ensure that you quote cylinder mechanism, striker plate and escutcheon



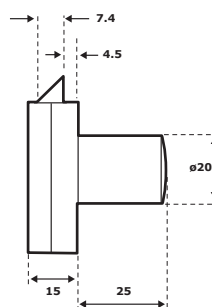
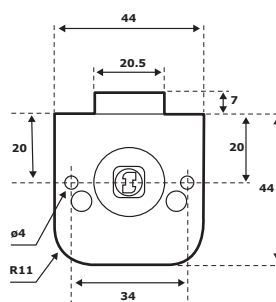
OF230

Flat bolt
Recessed fitting



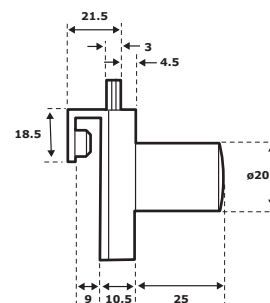
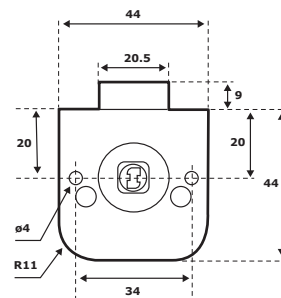
OF231

Spring latch



OF232

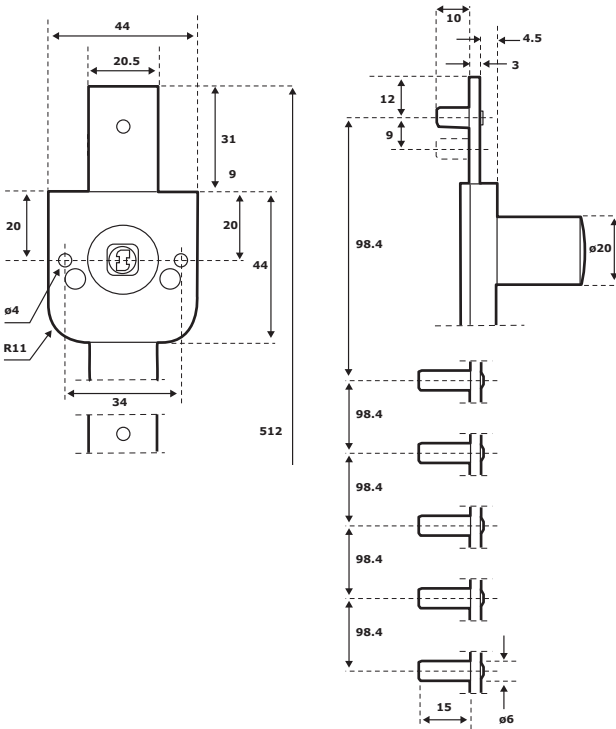
Flat bolt



SPECIFICATION	OF230	OF231	OF232	OF233	OF234	OF235
No. of discs	11	11	11	11	11	11
Key removable locked position only		•		•	•	•
Key removable locked and unlocked position	•		•			
Cylinder length	25	25	25	25	25	25
Door thickness (mm)	25	25	8	25	25	25
Striker plate (to be ordered separately)	434980 434981 455365	434980 434981 455365	434980 434981 455365	434980 434981 455365	434980 434981 455365	802330 434981
Cylinder mechanism						
Sentry (SN)	•	•	•	•	•	•
EXEC (EX)	•	•	•	•	•	•
Protec (PT)	•	•	•	•	•	•

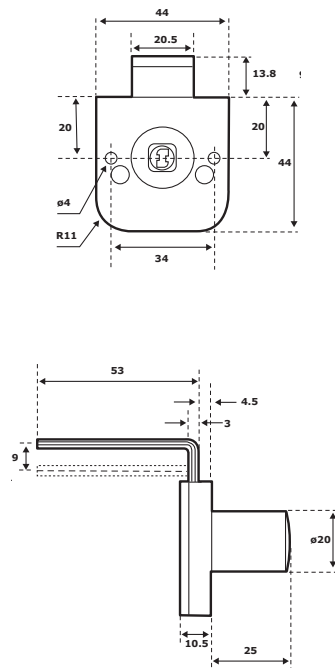
OF233

Flat bolt



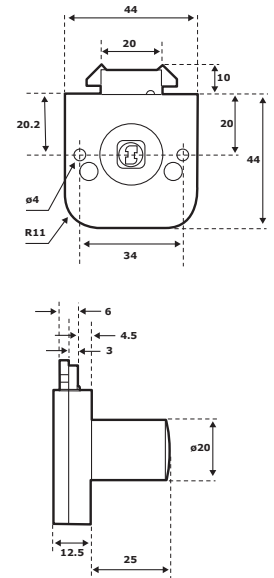
OF234

Flat bolt



OF235

Double hook

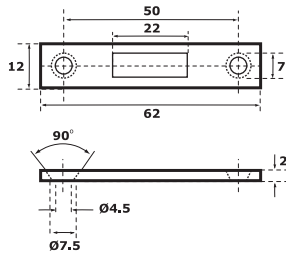


Striker plates for ABLOY® furniture locks

Striker plates are made of nickel plated steel

▼ **802330**

Striker plate for OF205



▼ **401746**

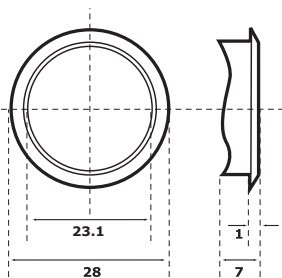
Escutcheon ring. Trim to cover drill hole

General

Chrome plated brass.

Please note: The diameter of the fitting hole must be 23-24mm.

Please add 4mm to the maximum door thickness measurement stated in chart.



▼ **413529**

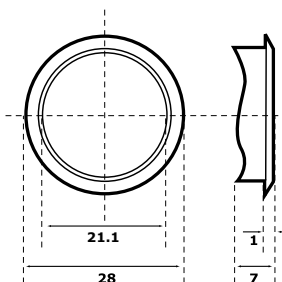
Escutcheon ring. Trim to cover drill hole

General

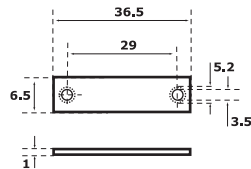
Chrome plated brass.

Please note: The diameter of the fitting hole must be 23-24mm.

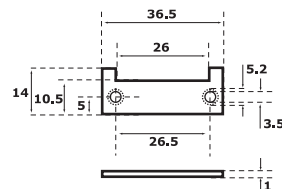
Please add 4mm to the maximum door thickness measurement stated in chart.



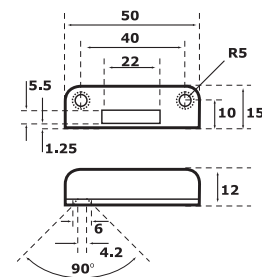
▼ **434980**



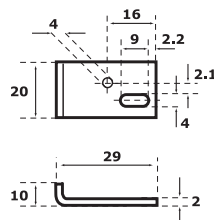
▼ **434981**



▼ **434987**



▼ **455365**



General

Cylinder housings and drums of chrome plated zinc.

Collars and cylinder rings of chrome plated brass.

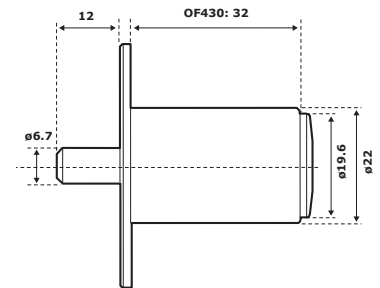
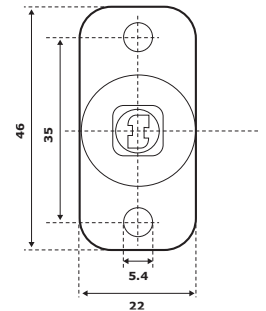
Bolts of nickel plated steel.

Ordering

Please ensure that you quote the cylinder mechanism required.

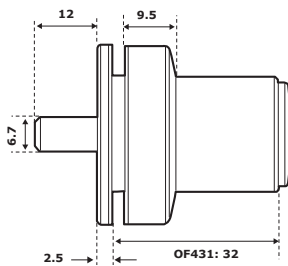
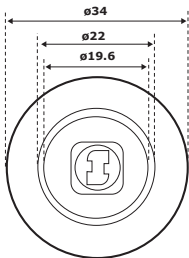
▼ **OF430**

Push button lock (general)



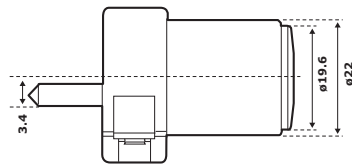
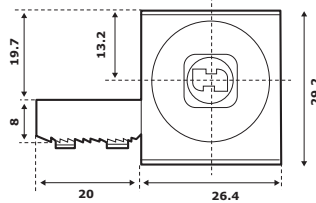
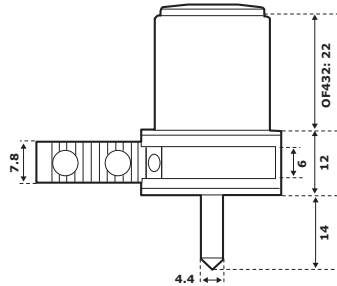
▼
OF431

Push button lock
(glass)



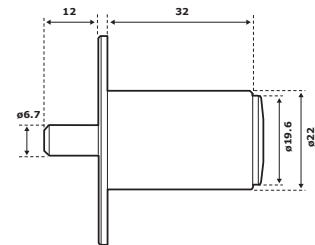
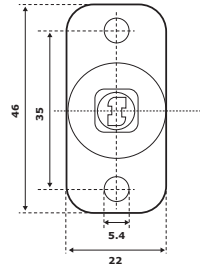
▼
OF432

Push button lock
(6mm glass)



▼
OF433

Push button lock
(general)



SPECIFICATION	OF430	OF431	OF432	OF433
No. of discs	11	11	11	11
Cylinder length	32	32	22	32
Overall length	44	46	48	44
Door thickness (mm)	32	2-9		32
Cylinder mechanism				
EXEC (EX)	•	•	•	•
Protec (PT)	•	•	•	•
Sentry (SN)	•	•	•	•

▼ **CL290**

Spring loaded latch

▼ **CL291**

Deadlocking latch

General

For vending/laundry machines or display cases with lift off or hinged tops.

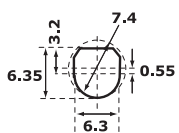
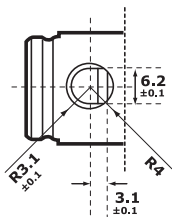
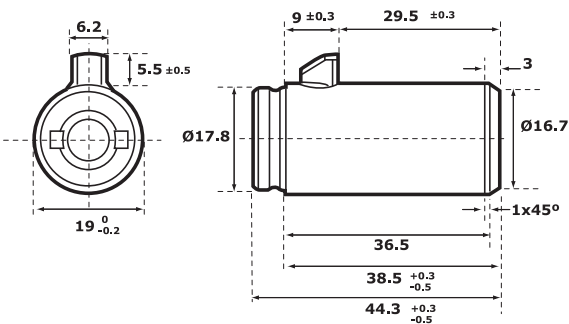
Features

- Key removable in locked position only.

- Cylinder housing chrome plated steel.
- Latch bolt nickel plated steel and plug face of chrome plated case hardened steel.
- Available with EXEC and PROTEC 9 disc cylinders.



SECURITY RATING: HIGH



(max dimensions)

NB. Hole for bolt must be at least Ø7.5

▼ **EP400**

Key removable in on and off positions

▼ **EP401**

Key removable in on or off positions

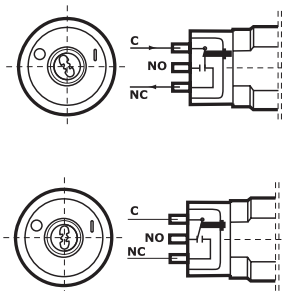
▼ **EP402**

Momentary contact

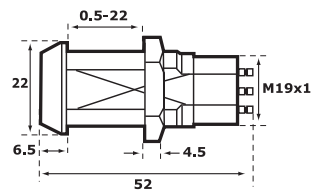
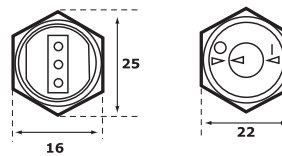


SECURITY RATING: HIGH

Circuit diagram



Dimensions

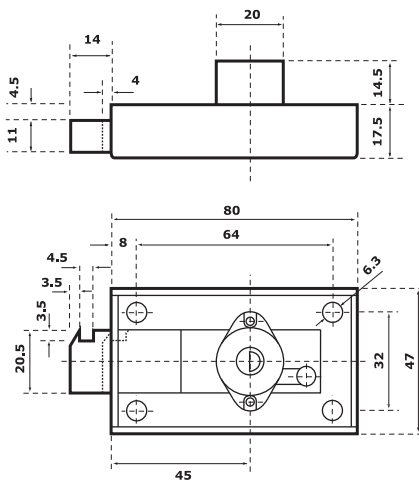


SC210

Single cylinder lock

Features

- Notch in the bolt can be used to engage an electric strike for deadlocking.
- Locking can be done with customer's key only.



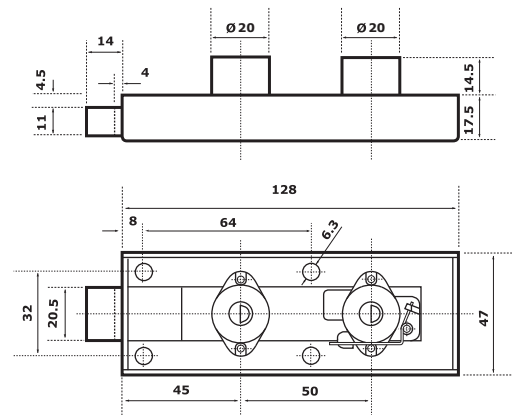
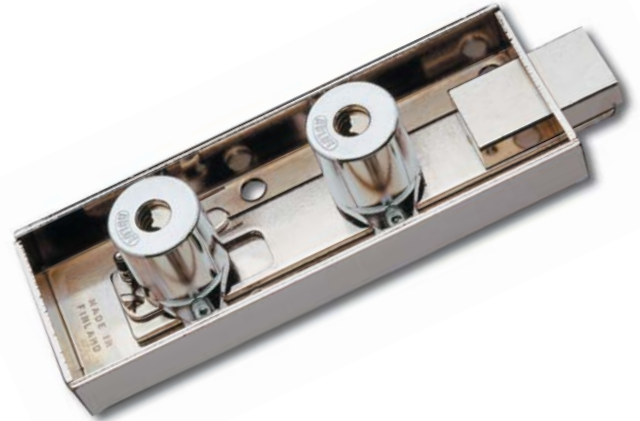
SC211

Dual cylinder lock

Features

- One cylinder is operated with customer's key and the other by the banker's key.
- Supplied complete with two keys for each cylinder.

- To open the lock both keys are needed but locking can be carried out using just the customer's key.



General

All cylinder housings are nickel plated brass. Cylinder drum of brass. Locking washer and nuts of zinc plated steel. Stop washer nickel plated brass.

Ordering

A wide selection of cam arms can be found on pages 18 and 19. Cam locks will be supplied right hand turning as standard, left hand is available on request. Drill protection is available as an additional cost.

Please note ASSA cam locks can only be master keyed with other cam locks or card/coin locks using the same mechanism. Padlocks can also form part of a master key system when all locks are on the DESMO short key.

DESMO is a patented system ideally suited to outdoor applications and harsh environments.

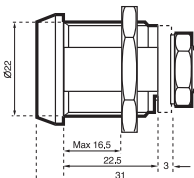
▼
8950
8920
10950

Desmo
(patented key system)

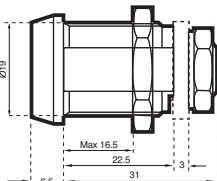
SECURITY RATING: HIGH



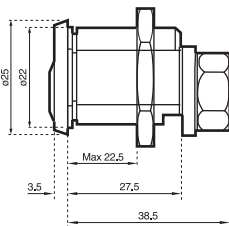
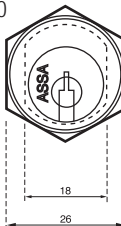
8950



8920



10950



▼
8460
10460

6 pin

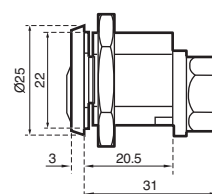
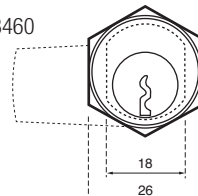
▼
2450
8450

5 pin

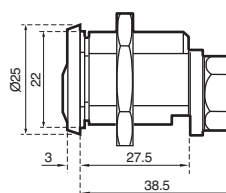
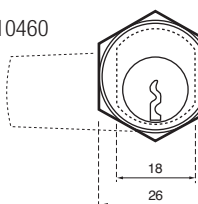
SECURITY RATING: HIGH



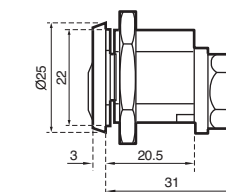
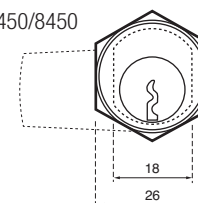
8460



10460



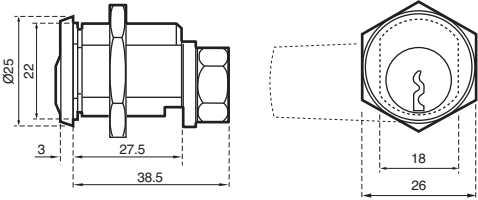
2450/8450



10450
13450

5 pin

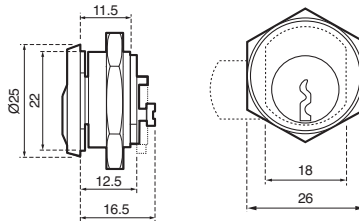
SECURITY RATING: MEDIUM



1451

3 pin for use where space is limited. Finish: bright nickel.

SECURITY RATING: NORMAL

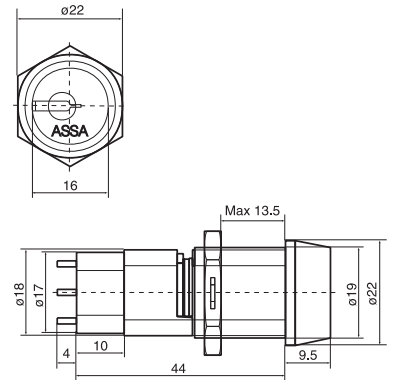


Switch lock

8925

Key removable in off position only

SECURITY RATING: HIGH



SPECIFICATION	8950	8920	10950	8460	10460	2450	8450	10450	13450	1451
Max door thickness mm	16	16	23	20	23	16	16	23	23	8
Key removable in locked position only	•	•	•	•	•		•	•		•
Key removable in unlocked and locked position	•	•					•			•
Cam turns										
90°	•	•	•	•	•		•	•		•
180°						•			•	
360°										
Cylinder mechanism										
3 pin										•
5 pin				•	•	•	•	•	•	
6 pin										
Desmo	•	•	•							
Can be master keyed	Yes	Yes	Yes	Yes	Yes	Yes	Yes	Yes	Yes	No
Handed	Yes	Yes	Yes	Yes	Yes	Yes	Yes	Yes	No	Reversible

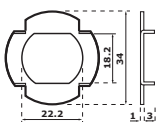
▼ **490583-000-57**
4.5mm nut (M11)



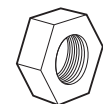
▼ **490657-900-002**
Front plate



▼ **491299-000-57**
Nail on plate ø34



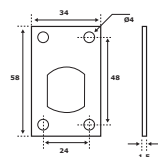
▼ **491439-000-57**
6.5mm nut (M11)



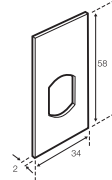
▼ **417008-900-002**
2mm square front plate ø34



▼ **491449-000-57**
Rear fixing plate



▼ **491450-900-002**
Front plate



▼ **391053-000-00**
Dust cap



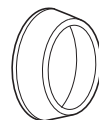
▼ **490610-000-57**
3.5mm mounting nut (M22)



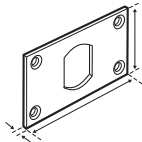
▼ **490246-000-57**
Locking washer



▼ **490271-900-002**
7mm Brass Bezel ø30



▼ **490821-900-011**
Front plate for counter sunk wood screws



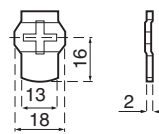
▼ **492262-000-57**
3.5mm mounting nut (M19)



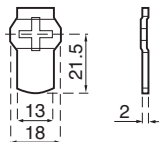
Cams for ASSA 1451 lock

Cams suitable for use with 1451 3-pin cam lock. Manufactured from 2mm thick zinc plated steel. Fitted by locking machine screws.

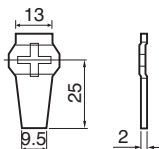
31



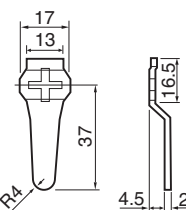
32



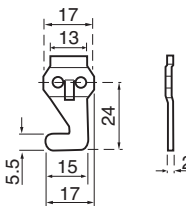
37



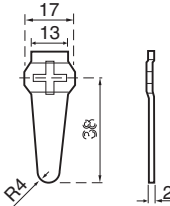
39



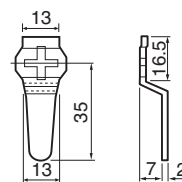
40



41

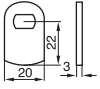


3164

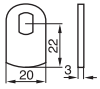


Cams for ASSA
locker locks and
cam locks

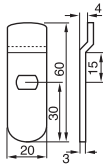
01



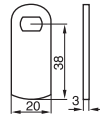
02



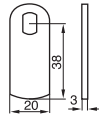
03



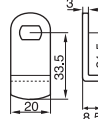
05



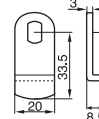
06



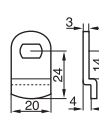
13



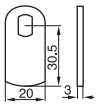
14



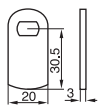
15



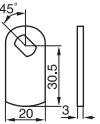
16



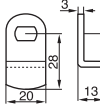
17



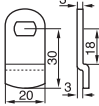
18



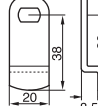
20



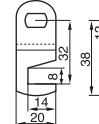
56



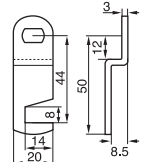
64



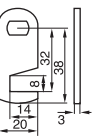
66



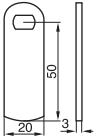
68



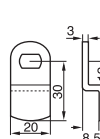
69



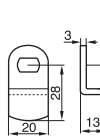
71



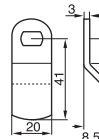
74



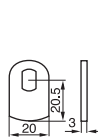
75



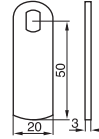
76



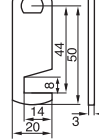
78



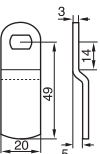
80



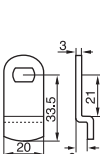
84



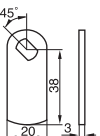
86



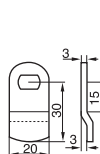
87



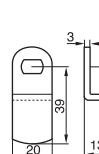
88



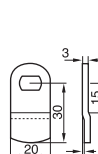
95



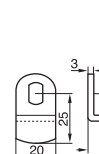
99



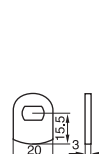
103



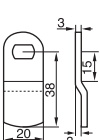
106



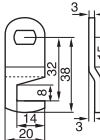
108



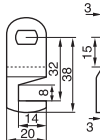
109



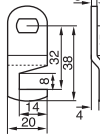
113



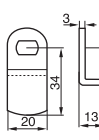
119



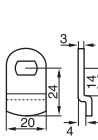
3152



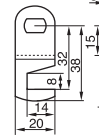
3155



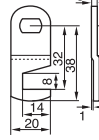
3157



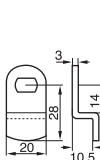
3161



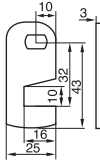
3162



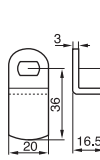
3170



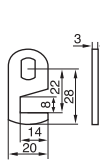
3171



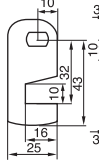
49 13 17



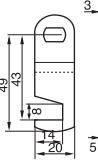
49 13 45



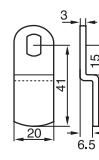
49 13 96



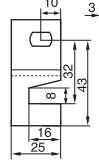
49 14 45



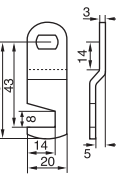
49 14 98



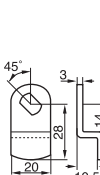
49 15 59



49 15 96



49 19 25



ASSA locker hasps

▼
391350
right

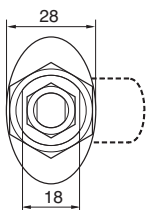
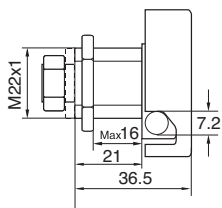
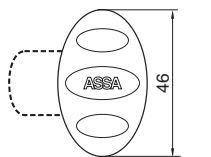
▼
391351
left
Oval locker
hasp with
cover

General

- For door thickness up to 16mm
- For use with padlocks maximum 6mm shackle diameter
- Includes integral oval cover

Finish

Constructed of zinc



▼
492831
right

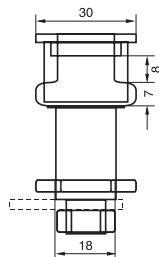
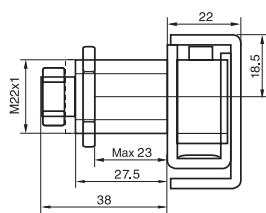
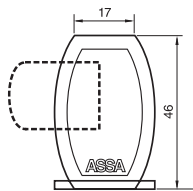
▼
492832
left
Long steel
locker hasp

General

- For door thickness up to 23mm
- For use with padlocks with maximum 8mm shackle diameter
- Includes integral long steel cover

Finishes

Zinc plated or brushed chrome plated steel



Yale locker padlocks

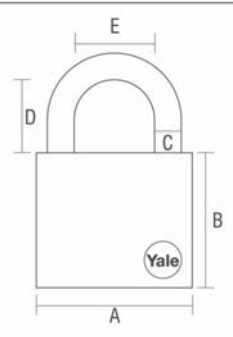


▼
P110/40/123/1

Handy Padlock Brass

40mm brass keyed padlock

- Solid brass body
- Chrome plated hardened steel shackle
- Multiple packs keyed alike

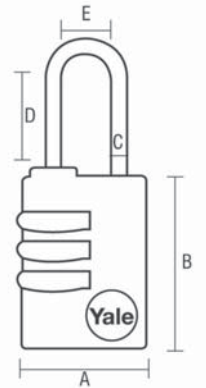


▼
P150/40/130/1

Combination Padlock

40mm 4-digit combination padlock

- Solid brass body
- Chrome plated steel shackle
- Resettable combination lock



PRODUCT CODE	DIMENSIONS (MM)				
	A	B	C	D	E
P110/40/123/1	41	33	6	22	22
P150/40/130/1	40	48	6	28	19

Unimille

Flexible coin and card lock for lockers

The ASSA Unimille series comes in seven basic versions. You can also choose between two levels of security of the lock cylinder, resulting in a total of 14 different versions. Perfect for any situation. And of course the lock is available for right and left-hung doors.



1

Coin retain or coin return?

2

What coinage?

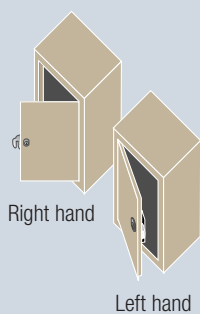
Unimille selector

Choose the right Unimille coin lock for your needs

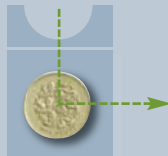
The ASSA Unimille series comes in seven basic versions. You can also choose between two levels of security of the lock cylinder, resulting in a total of 14 different versions. Perfect for any situation. And of course the lock is available for right and left-hung doors.

Use our selector to determine the usage of your lockers and the functions that the lock will need to accommodate. This will lead you to the right Unimille lock for you.

Lock handing guide



COIN RETURN



Deposit: coin return

Use of the lockers can be provided free of charge. A coin return lock solves the potential problem of users keeping the key on a permanent basis by requiring a deposit. This is returned once the key is put back in the lock. A plastic coin return tray is fitted to receive the returned coin.

£, € or other coin denominations available as well as tokens. Please specify when ordering.



COIN RETAINED



Payment: coin retained

A fee can be collected from users of the locker with a lockable box beneath the lock to collect the coins. Each can hold approximately 55-70 £1 coins; although for security reasons we recommend emptying them on a daily basis.

£, € or other coin denominations available as well as tokens. Please specify when ordering.



3

What functions do you need?

One coin slot and coin returned to user?



VARIANT A1



One coin slot. when the correct coin is deposited the lock becomes operational allowing key removal. The coin is automatically returned when the lock is opened.

Two coin slots, only one needed to access locker and coin returned to user?



VARIANT B1



Two coin slots, but only one is needed for access to the locker. The user can choose to deposit, say, £1 or €1 euro coin, making the lock more user friendly. Other coinages available.

Two coin slots, both needed to access locker and coin returned to user?



VARIANT C1



Two coin slots and both coins are required for access to the locker. This larger deposit reduces the risk of keys "walking off"

One coin slot and coin retained as payment?

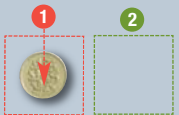


VARIANT A2



One coin slot. when the correct coin is deposited the lock becomes operational allowing key removal. The coin is retained in the coin box.

Two coin slots, only one needed to access locker and one coin retained as payment?



VARIANT B2



Two coin slots, but only one is needed for access to the locker. The user can choose to deposit, say, £1 or €1 euro coin, making the lock more user friendly. Other coinages available. One coin retained in coin box.

Two coin slots, both needed to access locker and both coins retained as payment?

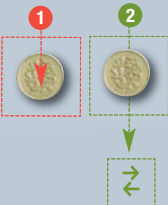


VARIANT C2



Two coin slots and both coins are required for access to the locker. This larger deposit reduces the risk of keys "walking off". Both coins retained in coin box.

Two coin slots, user can open unlimited number of times, one coin returned, one retained as payment?



VARIANT D



Two coin slots. User inserts two coins and can then open and close the locker an unlimited number of times without putting in additional coins. When the user leaves the locker for good, he presses the (R)eturn button and receives one coin in return, while the other drops into the coin box as payment

The Unimille variant suited to you

4

Now choose your security level

The ASSA Unimille is always delivered with interchangeable cylinders. This provides several advantages – for example, you can easily replace the cylinder of a coin lock if the key should disappear. Locks are always supplied under a master key with a choice of cylinders as shown below, dependant on customer requirements and security concerns.



Medium security
8460 cylinder

ASSA 6-pin cylinders offer a medium level of security with a large number of possible combinations. The high-quality cylinder is very reliable in all types of environments.



Top security
Desmo 8950 cylinder

The ASSA Desmo is a patented top-security lock cylinder. It offers an extremely large number of combinations, allowing you to build very large lock systems with it. Keys can only be copied at the factory, minimizing the risk of illicit copying. There are currently no known methods of manipulating the ASSA Desmo cylinder. Its design ensures that the key is extremely strong.

The "penalty" function

The penalty function prevents users from "keeping" their locker by not returning the key after use. If you chose the Desmo cylinder for your Unimille lock, the penalty function is standard.

The lock owner has a special key that empties the deposit (the coin) from the lock, resetting locks in which the key was not returned. The person who kept the key must insert a new deposit when he/she returns to the locker in order to keep using it.

This function is standard on locks with the Desmo cylinder and is available as an option on the 6-pin cylinder.

Other properties

- Adjustable to different coinage.
- Automatic coin reject.
- All coin boxes in the same system have the same access lock.

1. Select your case



Variant A1

One coin slot
Coin return



Variant B1

Two coin slots,
only one needed
to access locker
Coin return



Variant C1

Two coin slots,
both needed to
access locker
Coin return

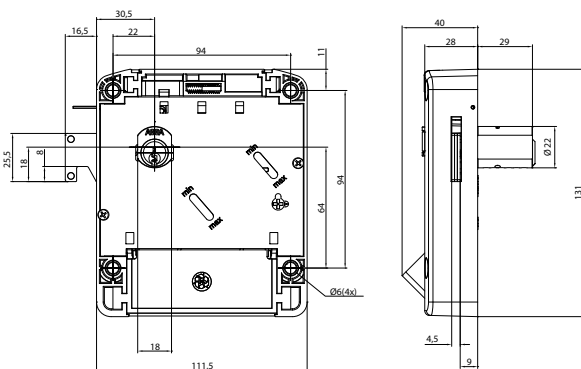


Variant A2

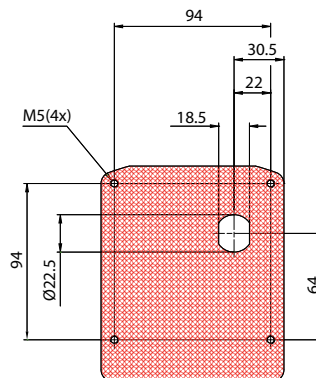
One coin slot
Coin retain



Dimensions



Hole preparation



PART NO	VERSION	RH/LH	COINBOX
290619	A1	RH	No
290620	A2	RH	Yes
290623	A1	LH	No
290624	A2	LH	Yes
290621	B1	RH	No
290622	B2	RH	Yes
290625	B1	LH	No
290626	B2	LH	Yes
290606	C1	RH	No
290607	C2	RH	Yes
290627	C1	LH	No
290628	C2	LH	Yes
290604	D	RH	Yes
290608	D	LH	Yes

▼ **Variant B2**

Two coin slots, one needed to access locker
Coin deposit (when required) and coin retain



▼ **Variant C2**

Two coin slots, both needed to access locker
Coin deposit and coin retain

▼ **Variant D**

Two coin slots, user can open unlimited number of times
Coin deposit and coin retain



2. Select your cylinder

▼ **8460**

Medium security
6-pin

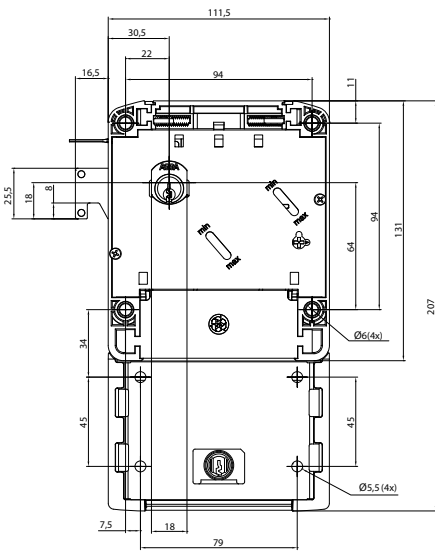


▼ **8950 Desmo**

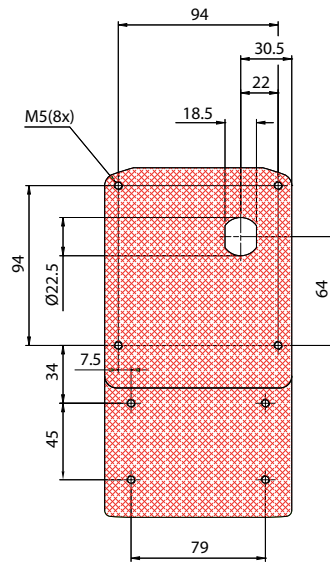
Top security



Dimensions



Hole preparation



PART NO	CYLINDER TYPE				KEY TYPE				CYLINDER LENGTH
	5 PIN	6 PIN	6 PIN PENALTY	DESMO PENALTY	MAXI	MINI	WRISTBAND	DESMO	
493067	•				•				RH 29mm
493078	•					•			RH 29mm
493082	•						•		RH 29mm
493077	•				•				LH 29mm
493080	•					•			LH 29mm
493084	•						•		LH 29mm
493036		•			•				RH 29mm
493079		•				•			RH 29mm
493083		•					•		RH 29mm
493045		•			•				LH 29mm
493081		•				•			LH 29mm
493085		•					•		LH 29mm
493086			•		•				RH 29mm
493088			•			•			RH 29mm
493090			•				•		RH 29mm
493087			•		•				LH 29mm
493089			•			•			LH 29mm
493091			•				•		LH 29mm
493037				•				•	RH 29mm
493076				•				•	RH 29mm

- ▼ **Classic**
Coin lock for dry environments
- ▼ **Classic+**
Coin lock for wet environments

General

- Coin lock body of black polycarbonate
- Cylinder of chrome plated brass
- Keys are nickel plated brass. Supplied with 2 keys.

Features

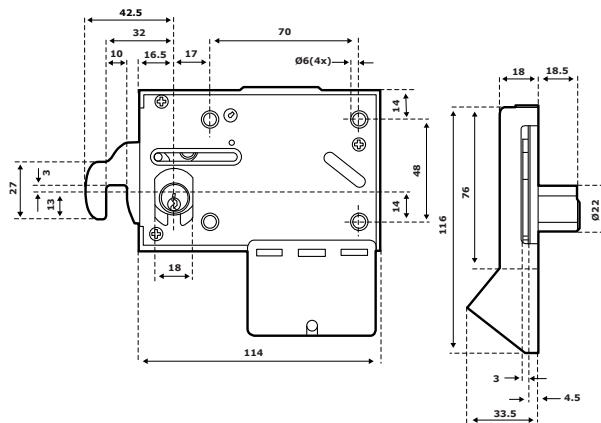
- Four cylinder types, fixed 19 or 29mm, removable 29mm high security patented ASSA DESMO for clients concerned about key duplication
- CLASSIC and CLASSIC+ coin locks can operate with 10p, 20p, 50p, £1 or £2
- Convertible currency range can be used with any local currency and can be converted on site to accept €1 or €2 coins

- Versions available for use with tokens
- Suitable for doors up to 20mm thick
- Locks can easily be set to operate as coin return or retain. For coin retain versions a coin box will be required.
- Supplied as coin return as standard comes complete with tray
- Left and right hand operation available

SECURITY RATING: NORMAL, MEDIUM OR HIGH DEPENDING ON CYLINDER CHOSEN



Right hand version



DOOR HINGED	STANDARD CURRENCY				CONVERTIBLE CURRENCY			
	CLASSIC+		CLASSIC		EURO 1		EURO 2	
	RIGHT	LEFT	RIGHT	LEFT	10460	2450	8450	10450
19mm Fixed Cylinder	290237	290241	290230	290233	290311	290313	290421	290424
29mm Fixed Cylinder	290251	290252	290245	290249	290323	290324	290434	290435
Removable Cylinder (29mm)	290239	290243	290246	290247	290315	290317	290426	290428
ASSA Desmo Cylinder (29mm)	290255	290256	n/a	n/a	290321	290322	n/a	n/a

DOOR THICKNESS	10mm	13mm	15mm	18mm	22mm
19mm cylinder	10mm escutcheon	6mm escutcheon	2mm front plate	0.75mm front plate	
29mm cylinder			10mm escutcheon	10mm escutcheon	6mm escutcheon
Removable cylinder (29mm)	10mm escutcheon*	10mm escutcheon*	10mm escutcheon*	10mm escutcheon*	6mm escutcheon

ASSA coin locks can be fitted to lockers with varying door thickness. Depending on the cylinder length, an escutcheon or front plate should be used.

* 10mm escutcheon plate is supplied with removable cylinder locks

Classic+

Card lock for wet environments

General

- CLASSIC+ card locks are suitable for use in humid or external use.
- Card lock body of black polycarbonate.
- Cylinder of chrome plated brass. Keys are nickel plated brass.
- Supplied with 2 keys.

Features

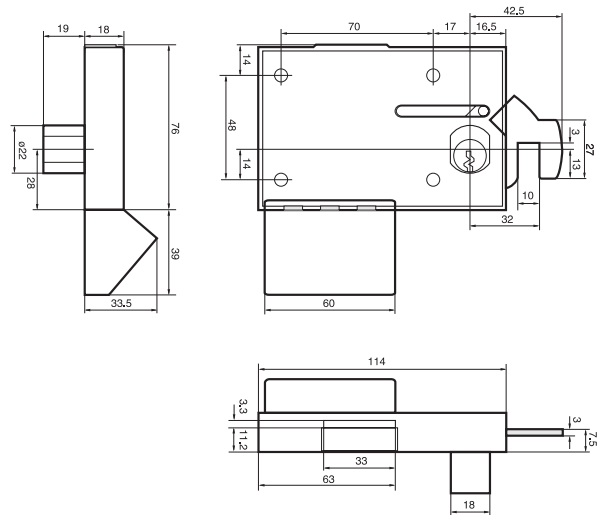
- Four cylinder types, fixed 19 or 29mm, removable 29mm or high security ASSA DESMO 29mm
- Card locks are operated by a plastic card punched with a unique pattern of holes, the card is retained until the key is inserted

- Cards are credit card size (85.7mm x 54mm) and can be supplied with magnetic stripe, bar code or chip allowing them to be used as part of an access control system
- Suitable for doors up to 20mm thick
- Left and right hand operation available

SECURITY RATING: NORMAL, MEDIUM OR HIGH DEPENDING ON CYLINDER CHOSEN



Left hand version



DOOR THICKNESS	10mm	13mm	15mm	17mm	20mm
19mm cylinder	10mm escutcheon	6mm escutcheon	2mm front plate	2mm front plate	
29mm cylinder			10mm escutcheon	10mm escutcheon	6mm escutcheon
Removable cylinder (29mm)	10mm escutcheon*	10mm escutcheon*	10mm escutcheon*	10mm escutcheon*	6mm escutcheon

ASSA coin locks can be fitted to lockers with varying door thickness. Depending on the cylinder length, an escutcheon or front plate should be used.

* 10mm escutcheon plate is supplied with removable cylinder locks

DOOR HINGED	CLASSIC+ RIGHT	LEFT
19mm fixed cylinder	290287	290294
29mm fixed cylinder	290288	290295
Removable Cylinder (29mm)	290286	290293
ASSA desmo cylinder (29mm)	290299	290300

ASSA coin locks can be fitted to lockers with varying door thickness. Depending on the cylinder length, an escutcheon or front plate should be used.

* 10mm escutcheon plate is supplied with removable cylinder locks

NB. Use spacer plates behind the lock if the cylinder projection is too great

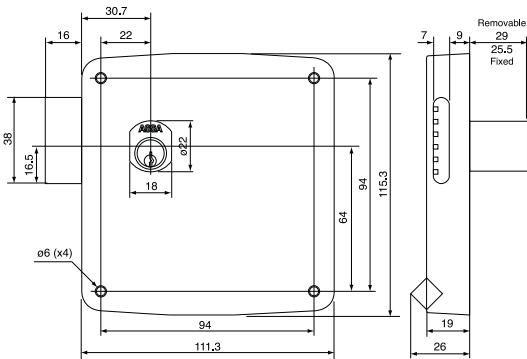
E-lite coin lock

Cost effective solution

Features

- Low cost
 - Corrosion resistant, for both wet and dry areas
 - Two versions available accepting either £1 or €1 coins
 - Coin return only with an integral coin tray
- Left and right hand operation available
 - Available with fixed or removable cylinders

For door thickness see opposite page



Right hand version

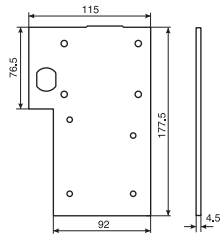
Accessories for use with ASSA Classic coin lock range only

For coin return lock

(for use with ASSA Coin lock range only)

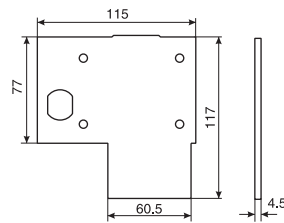
391264-900-084
Long spacer plate

Long spacer plate



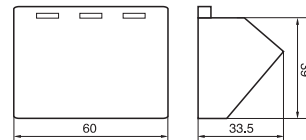
391238-900-084
Short spacer plate

Short spacer plate



39119-900-084
Coin tray

Coin tray

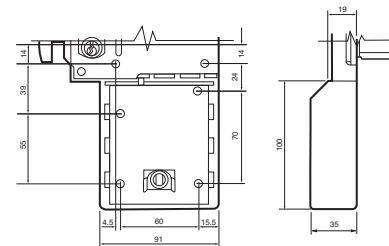


For coin retain lock

(for use with ASSA Coin lock range only)

391266-190-84
Coin box

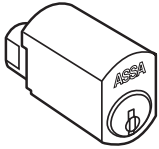
Coin box



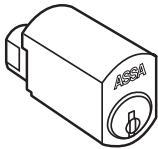
DOOR HINGED	£1 COIN		1 EURO COIN	
	RIGHT	LEFT	RIGHT	LEFT
25.5mm Fixed Cylinder	290491-125-087	290495-125-087	290491-111-087	290495-111-087
29mm Removable Cylinder	290493-125-087	290497-125-087	290493-111-087	290497-111-087

ASSA coin lock accessories

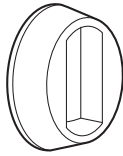
▼
391191
Spare removable cylinder RH



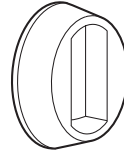
▼
391231
Spare removable cylinder LH



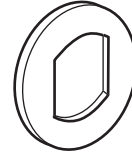
▼
492474-000-084
6mm black plastic escutcheon



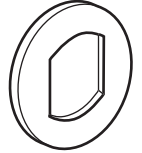
▼
492130-000-084
10mm black plastic



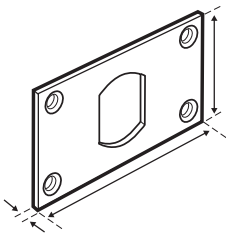
▼
490657-900-002
0.75mm front plate



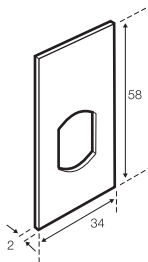
▼
417008-900-002
2mm front plate



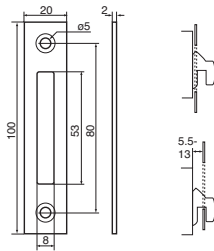
▼
490821-900-011
Front plate for counter sunk screws



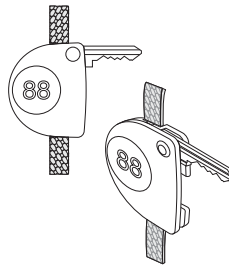
▼
491450-900-002
2mm front plate



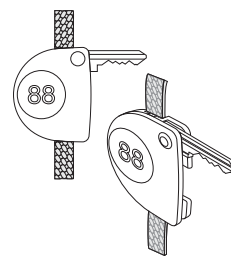
▼
492941-000-57
Universal striking plate



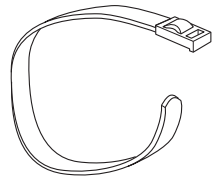
▼
492855-000-84
Key fob with 5-pin key



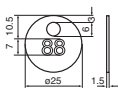
▼
492858-000-54
Key fob with 6-pin key



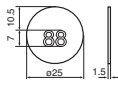
▼
492701-000-84
Braided strap for key fob



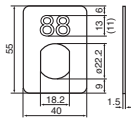
▼
492882-000-85
Numbered disc for key fob – white with black numbers



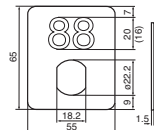
▼
492894-000-85
Round number plate. White with black numbers



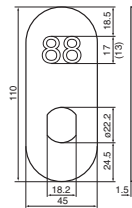
▼
492879-000-84
Rectangular number plate. Black with white numbers



▼
492880-000-84
Square number plate. Black with white numbers



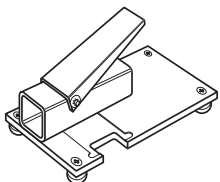
▼
492881-000-84
Oval number plate. Black with white numbers



NB.
Number plates are available in black with white numbers or white, gold and silver with black numbers. Colour options are not applicable to

Assa card lock accessories

▼
297369-019-00
Card Punch for ASSA card locks



E-motion

Offline electro
mechanical lock

General

- A battery powered proximity-reading lock using Mifare technology

- Operated by means of a card or tag, e-motion is ideal for lockers where Mifare is already in operation with access control of other doors and included in the central control software on a PC

Features

- Easy to fit on existing lockers, replacing the lock
- If the batteries run out the rest of the data remains intact
- Can be used in wet or dry environments

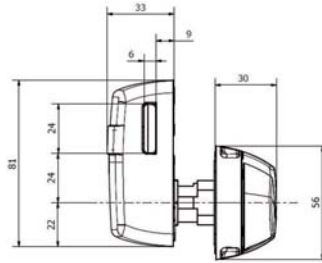
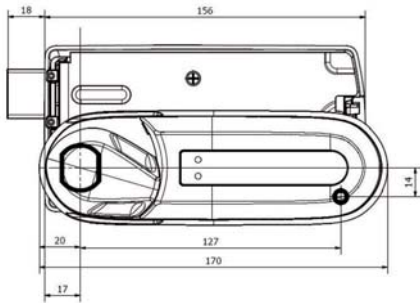


TECHNICAL DATA	
Technology	13.56MHz R/W touch less chip ISO 14443 A Phillips mifare Std 1K
Power	3 pcs 1.5V alkaline batteries, type LR03 AAA
Battery lifetime	> 20 000 openings or 3-4 years
Rating	IP55
Temperature	0-65°C

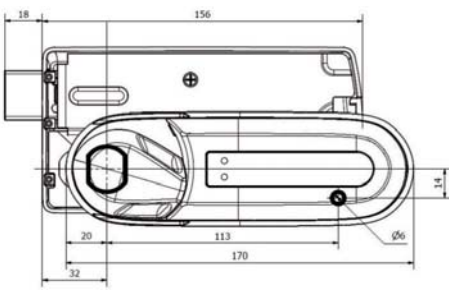
ORDER NUMBER	DOOR FRAME		DOOR THICKNESS (MM)		
	LONG	SHORT	2-12	12-25	15-25
363756 101 084	•		•		
363756 102 084	•			•	
363756 103 084	•				•
363757 101 084		•	•		
363757 102 084		•		•	
363757 103 084		•			•

Dimensions

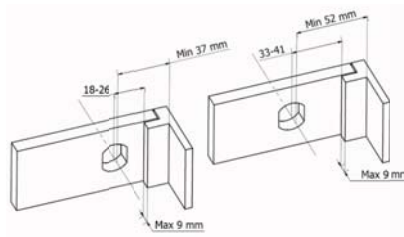
Right handed door - short



Right handed door - long

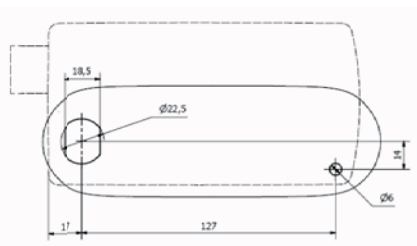


Cabinet dimension short/long

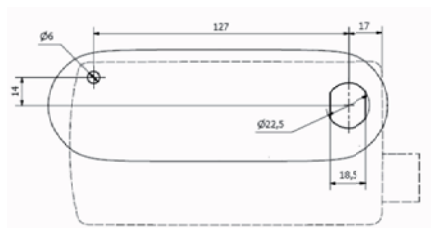


Hole preparation

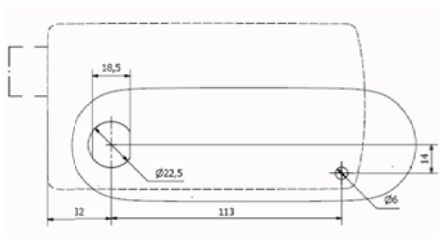
Right handed door - short



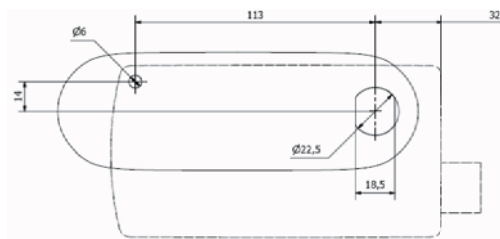
Left handed door - short



Right handed door - long



Left handed door - long



General

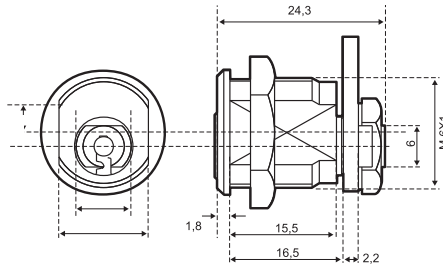
Suitable for use in wood or metal applications such as lockers and gaming machines.

Ordering

Please refer to table to determine cam turn operation required and state choice when ordering

For compatible cams please see page 35.

▼
607



SECURITY RATING: MEDIUM

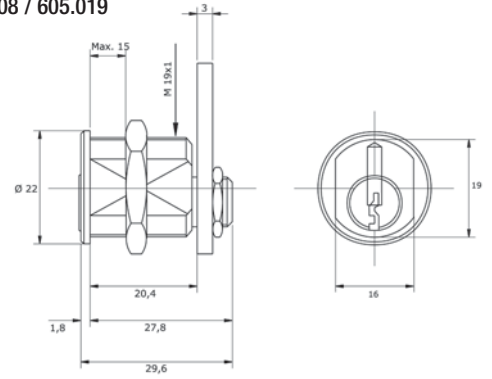
▼
605.008

605.019

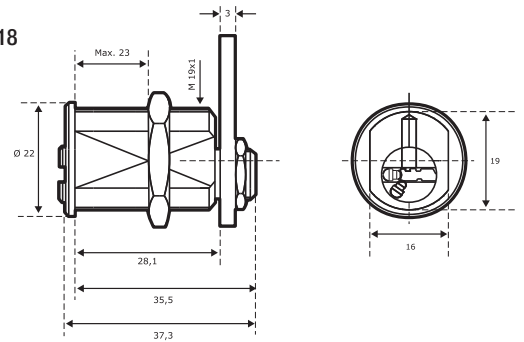
605.018



605.008 / 605.019



605.018

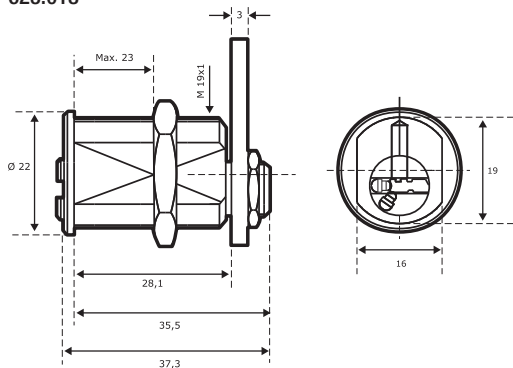


SECURITY RATING: MEDIUM

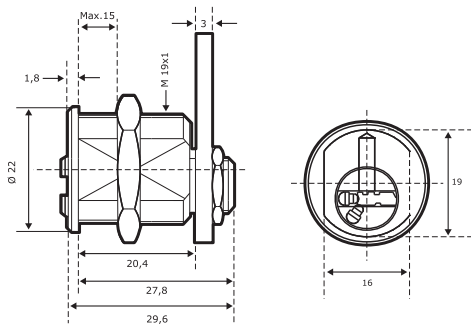
▼
623.008
623.018
623.019



623.018

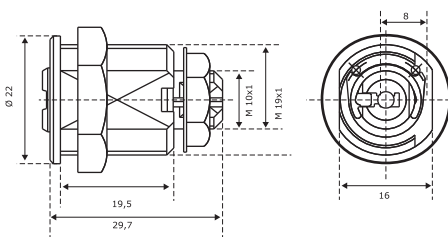


623.008 / 623.019



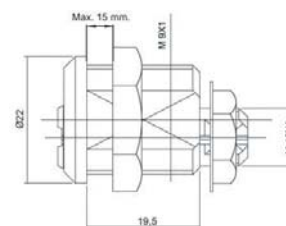
SECURITY RATING: MEDIUM

▼
620



SECURITY RATING: MEDIUM

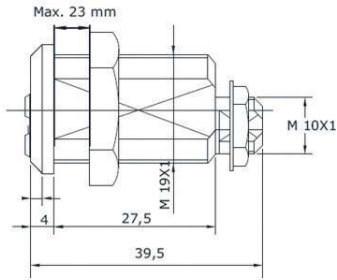
▼
Mini 6



SECURITY RATING: MEDIUM

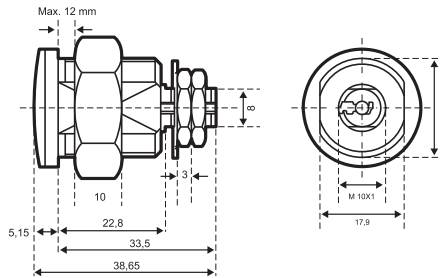
SPECIFICATION	607	605.008	605.018	605.019	MINI 6	623.008	623.018	623.019	620
Max door thickness mm	10	15	23	15	15	15	23	15	15 or 23
Key removable at 0°	•	•				•	•		
Key removable at ±45°				•				•	
Cylinder mechanism:									
3 pin			•						
5 pin	•	•		•	•	•	•	•	
6 pin					•			•	•
8 pin					•				
Can be masterkeyed	No	Yes	Yes	Yes	Yes	No	Yes	No	No
Side pin version available	No	Yes	Yes	Yes	No	No	No	No	Yes

▼
Mini 8



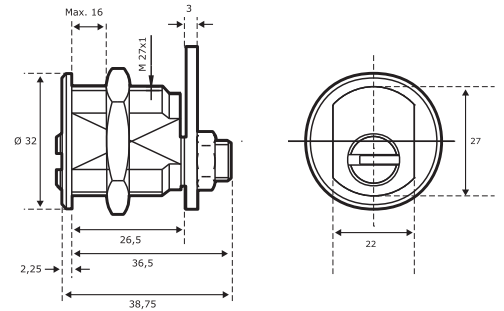
SECURITY RATING: MEDIUM

▼
Mini CS



SECURITY RATING: HIGH

▼
682iX



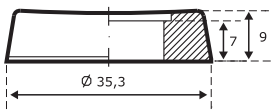
SECURITY RATING: HIGH

SPECIFICATION	MINI 8	Mini CS	682 iX
Max door thickness mm	23	12	16
Cylinder mechanism:			
6 pin		•	
8 pin	•		
10 pin			•
Can be masterkeyed	Yes	Yes	Yes
Side pin version available	Yes	Yes	Yes

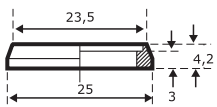
▼
Spacer bushing



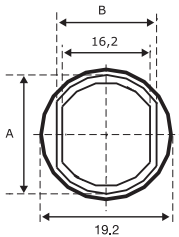
35.3 x 9mm



25 x 4.2mm

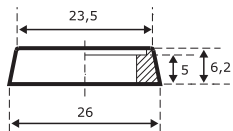


Mod1 20 x 17mm
Mod2 22 x 19mm

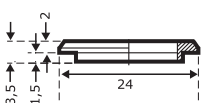


Mod.	A x B
1	20 X 17
2	22 X 19

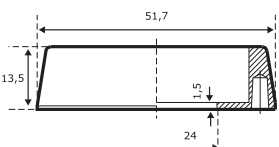
26 x 6.2mm



24 x 3.5mm

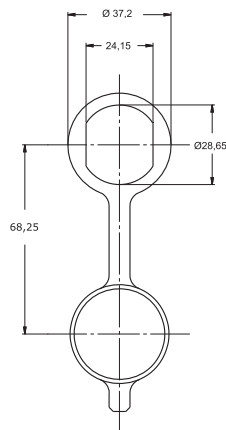


51.7 x 13.5mm



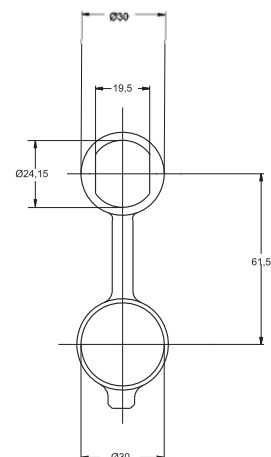
▼
821071G00000

Watertight cap



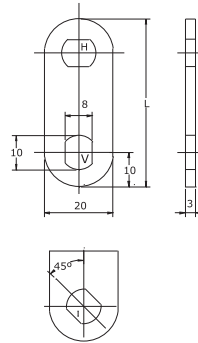
▼
820571D22000

Watertight cap



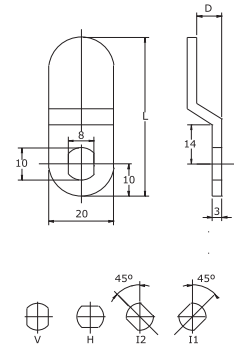
▼
Straight cam

Specials available on request (please see page 25 for options)



▼
Bent offset cam

Specials available on request (please see page 25 for options)



DIMENSIONS	L	V	H	I
84052327R022	27	•		
84052327R012	27	•		
84052330R022	30	•		
840523R35042	35	•		
840523R00002	35	•		
840523R35022	35	•	•	
84052337R002	37	•	•	
84052340R002	40	•	•	
840523940R02	40	•		•
84052343R022	43	•		
84052343R002	43	•	•	
84052343R012	43	•		
840523943R02	43	•		•
84052346R002	46	•	•	
840523946R02	46	•		•
84052349R002	49	•	•	
840523949R02	49	•		•
84052352R005	52	•	•	
84052352R002	52	•	•	
840523R52012	52	•		
840523952R02	52	•		•
84052355R002	55	•	•	
84052358R002	58	•	•	

DIMENSIONS	D	L	V	H	I
840523243022	2	43		•	
840523243012	2	43	•		
840523246012	2	46	•		
840523249012	2	49	•		
840523250002	2	50	•		
840523252E02	2	52	•		
840523441022	4	41	•		
840523441012	4	41	•	•	
840523447022	4	47		•	
840523447012	4	47	•		
840523945002	4	50			•
840523451U02	4	51	•	•	
840523542010	5	42	•		
840523639022	6	39		•	
840523639012	6	39	•		
840523642022	6	42	•		
840523642012	6	42	•		
840523964202	6	42			•
840523645012	6	45	•	•	
840523648022	6	48		•	
840423006482	6	48		•	
840523648012	6	48	•		
840523648042	6	48	•		
840523964802	6	48			•
840523837022	8	37		•	
840523837012	8	37	•		
840523840022	8	40		•	
840523843022	8	43		•	
840523846022	8	46		•	
840523846012	8	46	•		
840523984602	8	46			•
840523854002	8	54	•		
840523959022	9	59			•

General

These are just a selection of STS locks available for vending machine applications. Whatever the requirement there is a lock to suit, from small coffee machines to large drink or snack machines.

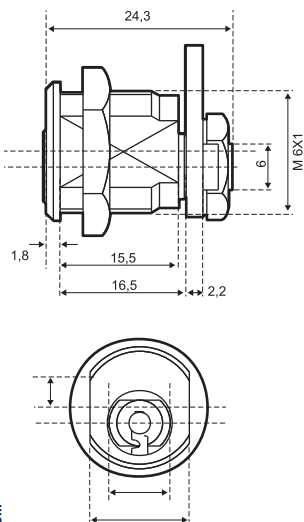
If there is more than one machine to lock up you could benefit from a master key system, this is available depending on the application and choice of lock, please contact us for further details.

▼ Café

For small coffee machines

Features

- 5 pins
- Cylinder housing of nickel plated brass
- Not masterkeyable



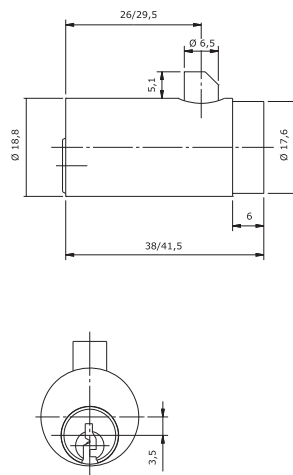
SECURITY RATING: MEDIUM

▼ 625

5 pins

Features

- Cylinder housing of chrome or nickel plated brass
- Available 38mm or 41mm in length



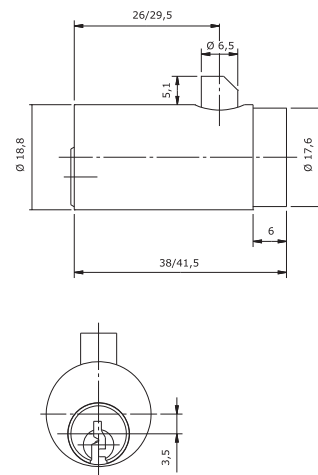
SECURITY RATING: MEDIUM

▼ Mini

6 or 8 pins

Features

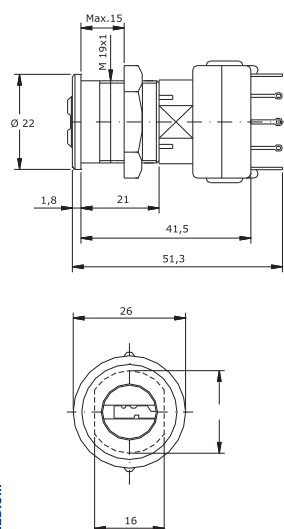
- Cylinder housing of chrome or nickel plated brass
- Available 38mm or 41mm in length



SECURITY RATING: MEDIUM

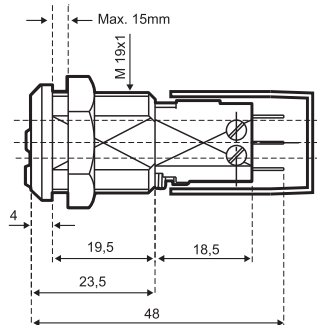
Switch locks provide a high quality solution for lift controls

▼
622.000



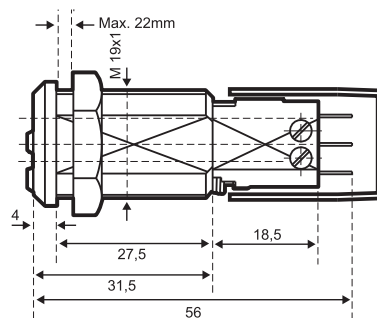
SECURITY RATING: MEDIUM

▼
Mini 6



SECURITY RATING: MEDIUM

▼
Mini 8



SECURITY RATING: MEDIUM

SPECIFICATION	EP400	EP401	EP402	8925	622.000	Mini 6	Mini 8	626.008 622.008	626.019 622.019
Door thickness mm	22	22	22	13.5	15	15	22	18	18
Cylinder housing	Case hardened brass		Brass		Brass	Brass	Brass	Brass	
Hex nut	Zinc plated steel		Zinc plated steel		Zinc plated steel	Zinc plated steel	Zinc plated steel	Zinc plated steel	Zinc plated steel
Switch actuator	Moulded plastic		Moulded plastic		Moulded plastic	Moulded plastic	Moulded plastic	Moulded plastic	Moulded plastic
Switch holder bracket	Moulded plastic		Moulded plastic		Moulded plastic	Moulded plastic	Moulded plastic	Moulded plastic	Moulded plastic
Mechanism	ABLOY EXEC		ASSA DESMO		6 Pin	6 Pin	8 Pin	5 Pin	5 Pin
Microswitch	Honeywell ISXI-H58		CK/MS						
Electrical values	7A, 250V AC 7A res, 28V DC 4A ind, 28V DC		2A, 30V DC 3A, 125V AC		Dependant on microswitch chosen see table over				
Masterkeyable	Yes		Yes		No	Yes	No	Yes	No
Finish	Chrome		Bright Nickel		Chrome	Chrome or nickel	Nickel	Chrome	Chrome

626.008

Key removable in on position



626.019

key removable in on and off positions



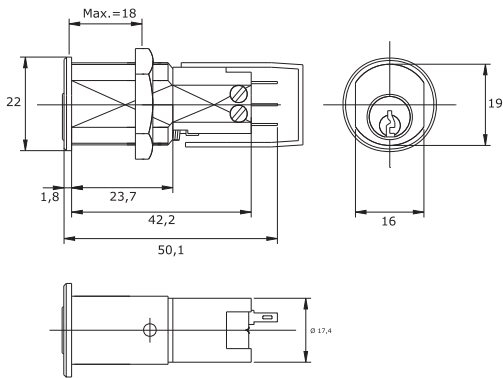
622.008

Key removable in on position



622.019

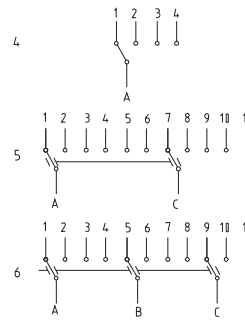
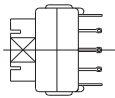
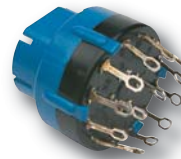
key removable in on and off positions



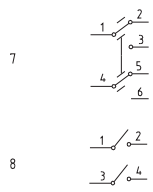
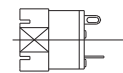
SECURITY RATING: MEDIUM

CK

Depending on your requirements there is a choice of microswitch available, please see the table below and state your choice when ordering.

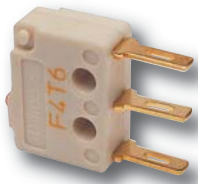


MS



SPECIFICATION	CK	MS	F4T6
Contact rating	4A, 250V AC 3A, 12V DC	4A, 250V AC 3A, 12V DC	5A, 250V AC 3A, 30V DC
Contact resistance	20 m Ω max	20 m Ω max	20 m Ω max
Test voltage	3000V	3000V	1000V
Life cycles	15000	15000	1000000
Contact material	Silver	Silver	Silver
For use with	622.000	Mini 8	626.008, 626.019 622.008, 622.019 Mini 6

▼
F4T6



9



▼
1048-10

'Snap open', fail locked

▼
1049-10

'Pull open', fail unlocked or fail locked (switchable)

General

Electro-mechanical locking units for showcases, desks, filing cabinets, medicine cupboards and other small door applications.

Features

- Versatile specification.
- Multiple locks can be controlled centrally.
- Can be operated by switch, keypad, card reader etc.

- Strong and compact.

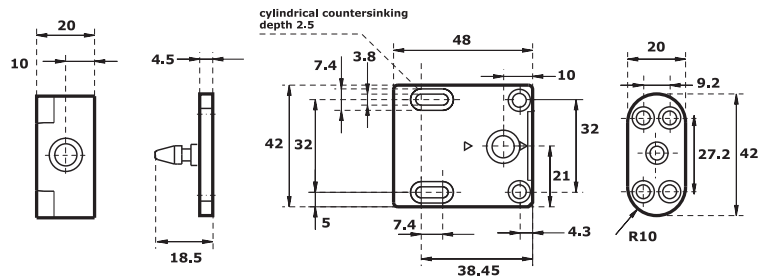
- Monitored versions available:

1048-10RR

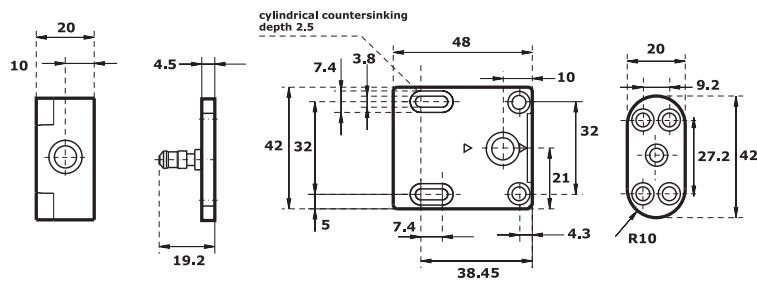
1049-10RR



1048-10



1049-10



SPECIFICATION	1048-10	1049-10
Operating voltage	12V DC-900mA	12V DC (stab) -260mA
Current consumption	12V AC-500mA1 24V DC-450mA 24V AC-230mA	2V AC-140mA 24V DC (stab) -130mA 24V AC-70mA
Temperature range	-20 to +60°C	+10 to +40°C
Monitoring contact load capacity	V/1amp	V/1amp
Compressive tensile strength	1000N	1000N
Corrosion resistance (DIN 40050)	IP20	IP20