



KATT

Modular Access Ladders

 **FIXFAST**

PRODUCT OVERVIEW

Contents

- 3 Maximum reliability. Minimum fuss.
- 4 KATT - Versatile range of fixed ladders
- 5 The KATT principle
- 6 KATT ladder terminology
- 7 KATT range overview

- 8 **KATT RL20 Series**
Angled mini access ladder
- 10 - RL21 with handrails
- 11 - RL22 with parapet platform
- 12 - RL23 with walkway
- 13 - RL24 with retractable stiles

- 14 **KATT RL30 Series**
Vertical access ladder
- 16 - RL31 with handrails
- 17 - RL32 with parapet platform
- 18 - RL33 with walkway
- 19 - RL34 with retractable stiles

- 20 **KATT RL40 Series**
Caged access ladder
- 22 - RL41 with handrails
- 23 - RL42 with parapet platform
- 24 - RL43 with walkway
- 25 - RL44 with retractable stiles

- 26 **KATT Accessories**
- 30 Installation procedure
- 32 Fixing
- 34 Summary of standards
- 36 Technical specifications
- 38 Quality/ISO/Testing
- 39 Sustainability
- 41 Our product ranges
- 41 KATT ladder enquiry



Maximum reliability. Minimum fuss.

FIXFAST aims to provide the most comprehensive range of fasteners and components for the external building envelope, and for those products to be the most reliable and well designed. Our products are supported by exceptionally helpful and diligent customer service.

With four decades of growth and innovation to our name, our mission is simple: to make your job easier.

Maximum safety. Minimum fuss.

KATT modular access ladders are an extremely versatile range of fixed ladders.

KATT ladders can be used at angles from 75° to vertical and can be supplied complete with fall arrest cages and landing platforms. The system has a unique, precision design, which ensures a high level of safety and confidence for maintenance personnel. The lightweight, high-strength, aluminium design provides safe and easy installation with non-corrosive, industrial-rated system performance.

Applications

- Safe access from the ground to roofs and elevated areas
- Safe access between varying roof levels
- Safe access to rooftop machinery and equipment platforms

Easy delivery

The lightweight components are delivered as a flatpack kit, which ensures easier handling and significant savings on freight costs. The components can be simply manhandled to the required location or crane-lifted once at destination.

Simple, on-site assembly

Each ladder is provided with all necessary fasteners and attachment hardware. By cutting the lower ladder body to the required length, the system can be built to suit exact site requirements. Often, pre-fabricated ladders are delivered to site and the critical dimensions, or the spacing of fixing brackets, are incorrect. Then there are costs and time delays whilst the fabrication is adjusted. With the modular KATT ladder system you simply build the kit to suit the site layout.

Safe and easy to use

The wider ladder body and unique, profiled, anti-slip rung design ensures increased user confidence and safety.

Compliant

KATT ladders are manufactured to comply with the relevant British Standards BS4211:2005 + A1:2008.

The KATT principle – Simple and compliant

Ladder head module
Easy and safe step-through

Top rung level with walking/working surface

Ladder attachment bracket
Various sizes to suit different applications

Profiled rung 50mm x 35mm
Non-slip, comfortable to climb

Precision welded rung assembly
High-strength, neat appearance

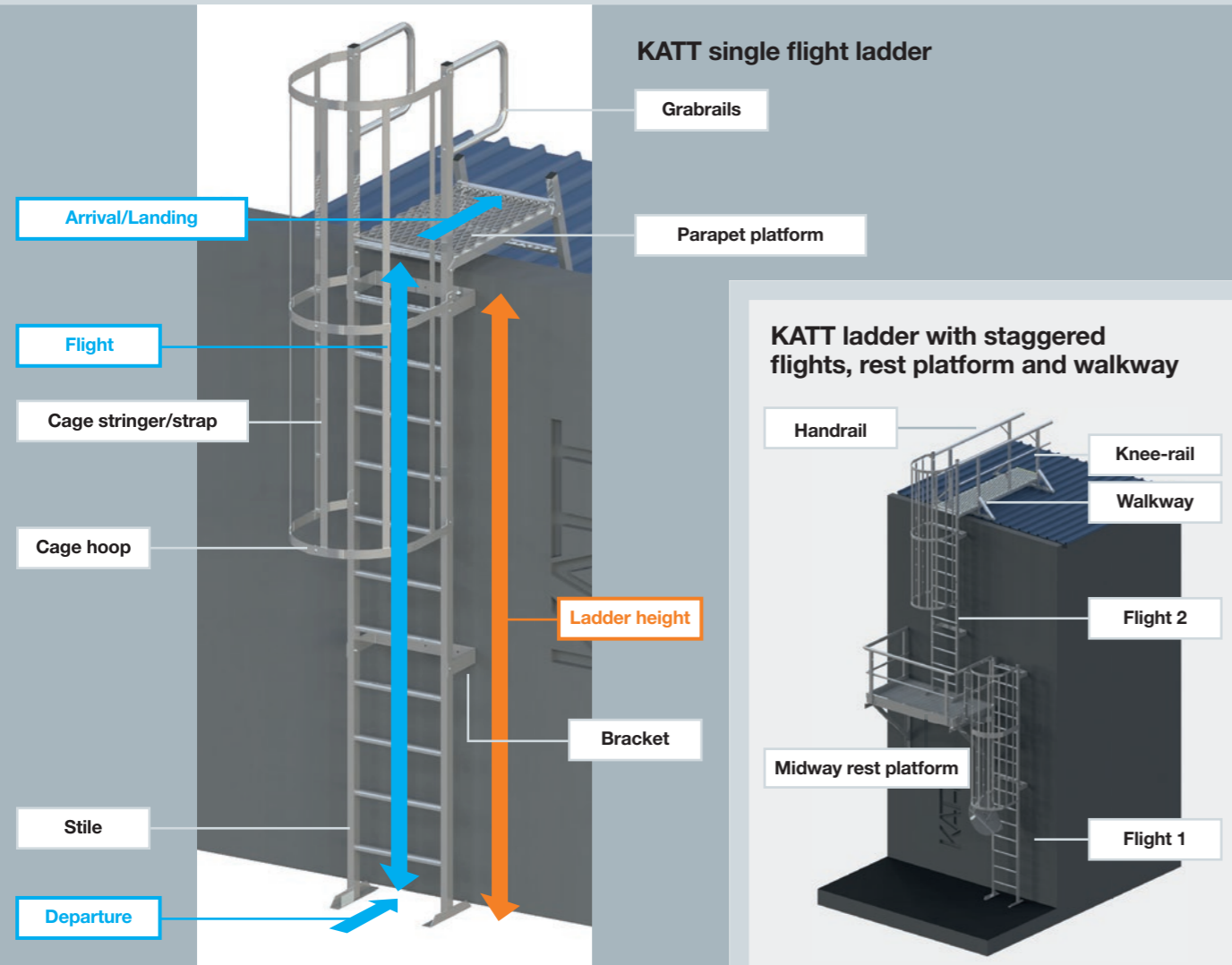
Splice joint
For easy joining of modules

Ladder body module
600mm width makes it safer and easier to climb

Ladder base support
Options available for all roof types, including load-spreading base for built-up roofs

CUT ON SITE TO ACHIEVE REQUIRED HEIGHT

KATT ladder terminology



KATT range overview

	1 = Grabrails	2 = Parapet Platform	3 = Walkway	4 = Retractable Stiles
RL20 Series = Angled For ladder heights up to 2m	RL21 	RL22 	RL23 	RL24
	RL30 Series = Vertical For ladder heights up to 2m	RL31 	RL32 	RL33
RL40 Series = Caged For ladder heights over 2m	RL41 	RL42 	RL43 	RL44

KATT RL20 Series

Angled mini access ladders

The KATT angled mini access ladders are ideally suited to providing access between different roof levels and plant platforms where the height is 2m or less. The angled climb makes these ladders user-friendly and well suited to areas where regular access is required.



KATT RL21

Angled mini access ladder with grabrails

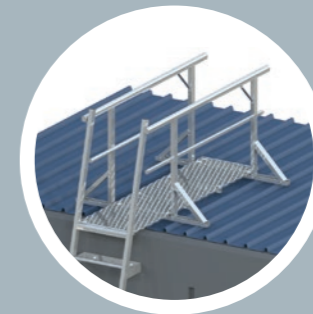
Page 10



KATT RL22

Angled mini access ladder with parapet platform

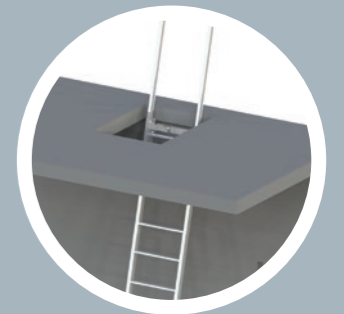
Page 11



KATT RL23

Angled mini access ladder with walkway

Page 12



KATT RL24

Angled mini access ladder with retractable stiles

Page 13



RL20 Series – Angled mini access ladder



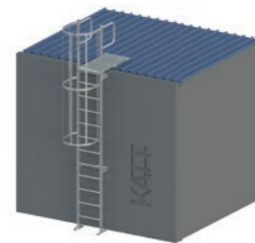
RL21
Angled mini access ladder
with grabrails

Ideally suited to providing access between varying levels.

Applications include:

- Lower roofs to upper roofs
- Plant platform access
- Varying floor heights

RL21 Kits		
Code	RL21 x 1000	RL21 x 2000
To suit heights up to	1000mm	2000mm



According to BS4211:2005 – Fall Protection shall be provided when the height of a ladder is more than 2m. Please see RL40 Series kits on pages 20–25 for ladders where heights exceed 2m.

RL20 Series – Angled mini access ladder



RL22
Angled mini access ladder
with parapet platform

Ideally suited to providing access between varying levels where there is a parapet wall.

Applications include:

- Parapet walls
- Access to canopies
- Lower roofs to upper roofs

RL22 Kits		
Code	RL22 x 1000	RL22 x 2000
To suit heights up to	1000mm	2000mm



According to BS4211:2005 – Fall Protection shall be provided when the height of a ladder is more than 2m. Please see RL40 Series kits on pages 20–25 for ladders where heights exceed 2m.

KATT Modular Access Ladders

RL20 Series – Angled mini access ladder



RL23
Angled mini access ladder
with walkway

Ideally suited to accessing elevated areas where extra safety levels are required. The 2.4m long walkway takes the user at least 2m away from the roof edge, where it is accepted that the worker is in a safe zone.

Applications include:

- Access between varying roof levels
- Access to canopies
- Access to plant platforms

RL23 Kits

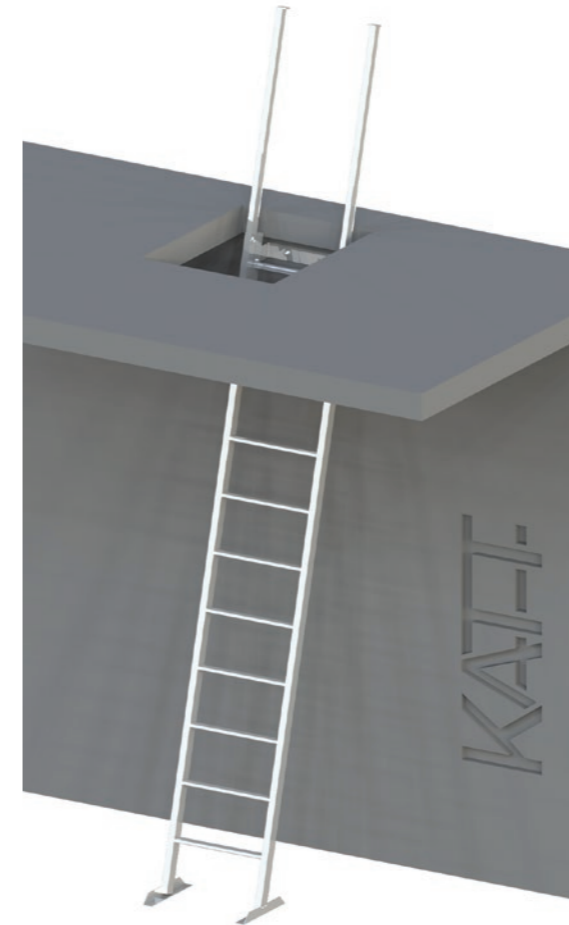
Code	RL23 x 1000	RL23 x 2000
To suit heights up to	1000mm	2000mm



According to BS4211:2005 – Fall Protection shall be provided when the height of a ladder is more than 2m. Please see RL40 Series kits on pages 20–25 for ladders where heights exceed 2m.

KATT Modular Access Ladders

RL20 Series – Angled mini access ladder



RL24
Angled mini access ladder
with retractable stiles

Ideally suited to providing access to elevated areas through a hatch or opening.

Applications include:

- Access between varying roof levels
- Access to canopies
- Access to plant and equipment

RL24 Kits

Code	RL24 x 1100	RL24 x 2000
To suit heights up to	1100mm	2000mm



According to BS4211:2005 – Fall Protection shall be provided when the height of a ladder is more than 2m. Please see RL40 Series kits on pages 20–25 for ladders where heights exceed 2m.

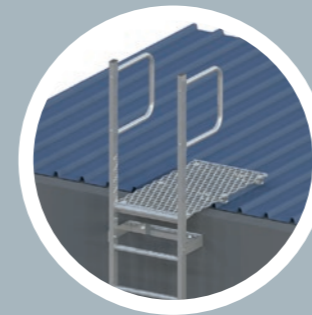
Further heights can be provided without cage for applications where surrounding structures (walls, parts of machines, etc.) in front of and on the sides of the ladder provide a similar level of protection to a cage.

Please enquire for details.

KATT RL30 Series

Vertical access ladders

The KATT vertical access ladders are ideally suited to providing access between different roof levels and plant platforms where the height is 2m or less. The vertical fixture means they take up less space than an angled ladder, which makes them more suitable for areas where a compact solution is required.



KATT RL31

Vertical access ladder with grabrails

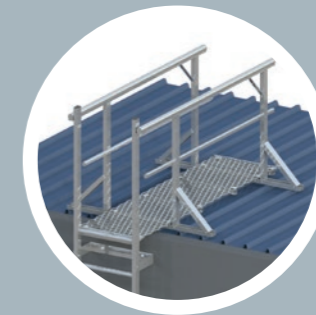
Page 16



KATT RL32

Vertical access ladder with parapet platform

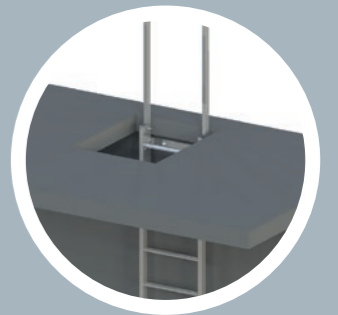
Page 17



KATT RL33

Vertical access ladder with walkway

Page 18



KATT RL34

Vertical access ladder with retractable stiles

Page 19



RL30 Series – Vertical access ladder



RL31
Vertical access ladder
with grabrails

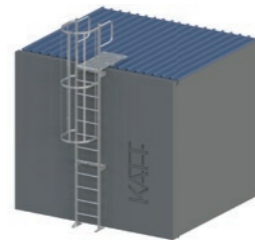
Ideally suited to providing access between varying levels.

Applications include:

- Lower roofs to upper roofs
- Plant platform access
- Varying floor heights

RL31 Kits

Code	RL31 x 1000	RL31 x 2000
To suit heights up to	1000mm	2000mm



According to BS4211:2005 – Fall Protection shall be provided when the height of a ladder is more than 2m. Please see RL40 Series kits on pages 20–25 for ladders where heights exceed 2m.

RL30 Series – Vertical access ladder



RL32
Vertical access ladder
with parapet platform

Ideally suited to providing access between varying levels where there is a parapet wall.

Applications include:

- Parapet walls
- Access to canopies
- Lower roofs to upper roofs

RL32 Kits

Code	RL32 x 1000	RL32 x 2000
To suit heights up to	1000mm	2000mm



According to BS4211:2005 – Fall Protection shall be provided when the height of a ladder is more than 2m. Please see RL40 Series kits on pages 20–25 for ladders where heights exceed 2m.

KATT Modular Access Ladders

RL30 Series – Vertical access ladder



RL33
Vertical access ladder
with walkway

Ideally suited to accessing elevated areas where extra safety levels are required. The 2.4m-long walkway takes the user at least 2m away from the roof edge, where it is accepted that the worker is in a safe zone.

Applications include:

- Access between varying roof levels
- Access to canopies
- Access to plant and equipment

RL33 Kits

Code	RL33 x 1000	RL33 x 2000
To suit heights up to	1000mm	2000mm



According to BS4211:2005 – Fall Protection shall be provided when the height of a ladder is more than 2m. Please see RL40 Series kits on pages 20–25 for ladders where heights exceed 2m.

KATT Modular Access Ladders

RL30 Series – Vertical access ladder



RL34
Vertical access ladder
with retractable stiles

Ideally suited to providing access to elevated areas through a hatch or opening.

Applications include:

- Access between varying roof levels
- Access to canopies
- Access to plant and equipment

RL34 Kits

Code	RL34 x 1200	RL34 x 2000
To suit heights up to	1200mm	2000mm



According to BS4211:2005 – Fall Protection shall be provided when the height of a ladder is more than 2m. Please see RL40 Series kits on pages 20–25 for ladders where heights exceed 2m.

Further heights can be provided without cage for applications where surrounding structures (walls, parts of machines, etc.) in front of and on the sides of the ladder provide a similar level of protection to a cage.

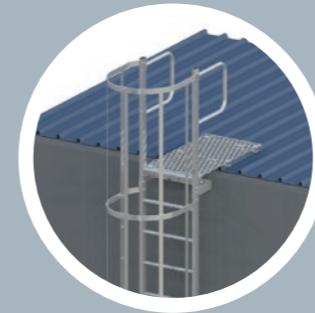
Please enquire for details.



KATT RL40 Series

Caged access ladders

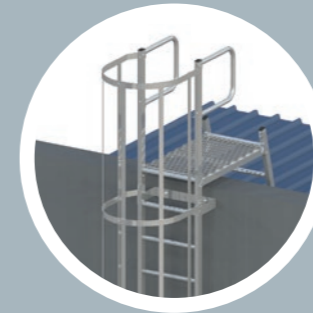
The KATT caged access ladders provide basic fall protection, which is required on all ladders over 2m high, in compliance with BS4211:2005.



KATT RL41

Caged access ladder with grabrails

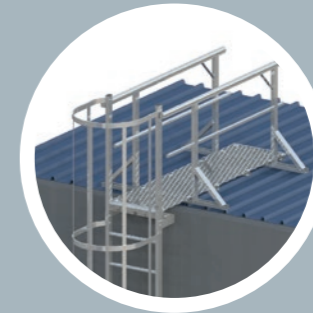
Page 22



KATT RL42

Caged access ladder with parapet platform

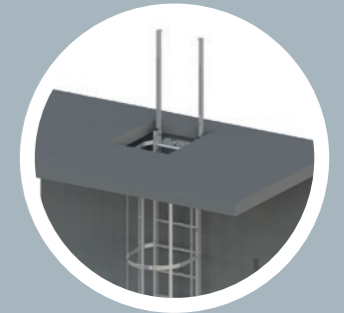
Page 23



KATT RL43

Caged access ladder with walkway

Page 24



KATT RL44

Caged access ladder with retractable stiles

Page 25

KATT Modular Access Ladders

RL40 Series – Caged access ladder



RL41
Caged access ladder
with grabrails

The perfect solution for application heights over 2m, where standards require fall protection.

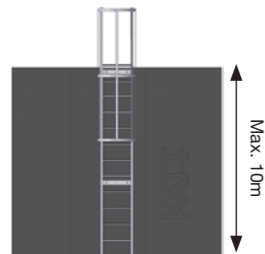
Applications include:

- Primary access from ground to roof area
- Lower roofs to upper roofs
- Plant platform access

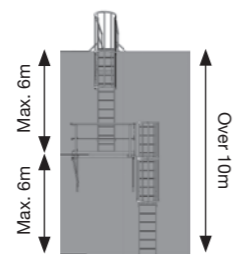
RL41 Kits

Code	RL41 x 2250	RL41 x 3150	RL41 x 4350	RL41 x 5250	RL41 x 6450	RL41 x 7350	RL41 x 8550	RL41 x 9450
To suit heights up to	2250mm	3150mm	4350mm	5250mm	6450mm	7350mm	8550mm	9450mm

If height required is greater than 10m please contact us for further information



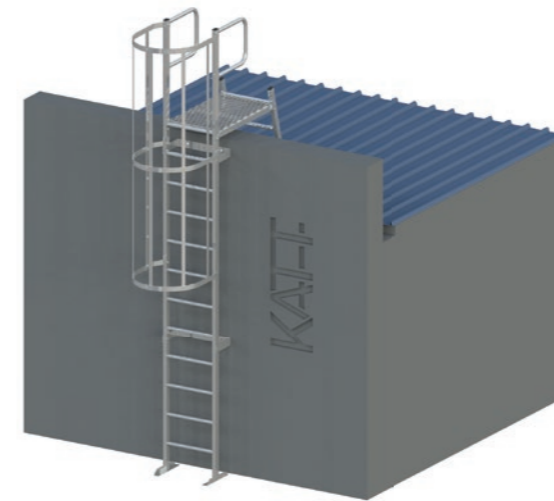
When the climbing height is 10m or less, one single flight ladder can be installed.



When the height is greater than 10m, a staggered flight ladder must be installed. The climbing height of the individual ladders must be 6m or less and an intermediate rest platform must be provided between each ladder.

KATT Modular Access Ladders

RL40 Series – Caged access ladder



RL42
Caged access ladder
with parapet platform

The perfect solution for application heights over 2m, where there is a parapet wall.

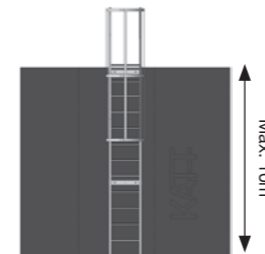
Applications include:

- Primary access from ground to roof area
- Lower roofs to upper roofs
- Parapet walls

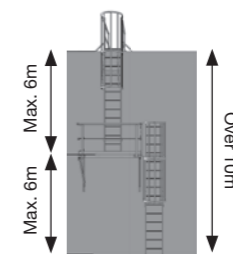
RL42 Kits

Code	RL42 x 2250	RL42 x 3150	RL42 x 4350	RL42 x 5250	RL42 x 6450	RL42 x 7350	RL42 x 8550	RL42 x 9450
To suit heights up to	2250mm	3150mm	4350mm	5250mm	6450mm	7350mm	8550mm	9450mm

If height required is greater than 10m please contact us for further information



When the climbing height is 10m or less, one single flight ladder can be installed.



When the height is greater than 10m, a staggered flight ladder must be installed. The climbing height of the individual ladders must be 6m or less and an intermediate rest platform must be provided between each ladder.

KATT Modular Access Ladders

RL40 Series – Caged access ladder



RL43
Caged access ladder
with walkway

Ideally suited to accessing elevated areas over 2m high, where extra safety levels are required. The 2.4m-long walkway takes the user at least 2m away from the roof edge, where it is accepted that the worker is in a safe zone.

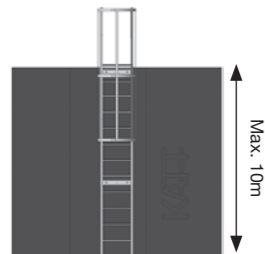
Applications include:

- Primary access from ground to roof area
- Access to canopies
- Access between varying roof levels

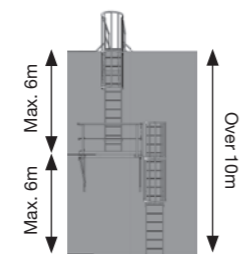
RL43 Kits

Code	RL43 x 2250	RL43 x 3150	RL43 x 4350	RL43 x 5250	RL43 x 6450	RL43 x 7350	RL43 x 8550	RL43 x 9450
To suit heights up to	2250mm	3150mm	4350mm	5250mm	6450mm	7350mm	8550mm	9450mm

If height required is greater than 10m please contact us for further information



When the climbing height is 10m or less, one single flight ladder can be installed.



When the height is greater than 10m, a staggered flight ladder must be installed. The climbing height of the individual ladders must be 6m or less and an intermediate rest platform must be provided between each ladder.

KATT Modular Access Ladders

RL40 Series – Caged access ladder



RL44
Caged access ladder
with retractable stiles

Ideally suited to providing access to elevated areas over 2m high, through a hatch or opening.

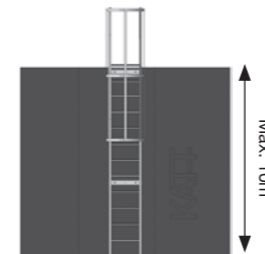
Applications include:

- Access between varying roof levels and mezzanines
- Access to canopies
- Access to plant and equipment

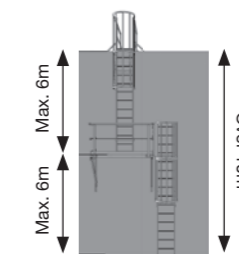
RL44 Kits

Code	RL44 x 2100	RL44 x 3300	RL44 x 4200	RL44 x 5400	RL44 x 6300	RL44 x 7500	RL44 x 8400	RL44 x 9600
To suit heights up to	2100mm	3300mm	4200mm	5400mm	6300mm	7500mm	8400mm	9600mm

If height required is greater than 10m please contact us for further information



When the climbing height is 10m or less, one single flight ladder can be installed.



When the height is greater than 10m, a staggered flight ladder must be installed. The climbing height of the individual ladders must be 6m or less and an intermediate rest platform must be provided between each ladder.

KATT Accessories

Standard fixing bracket



Code	Depth of bracket	Stand-off from wall
KL-BRACKET-280	280mm	220mm

Gusseted fixing bracket



Code	Depth of bracket	Stand-off from wall
KL-BRACKET-400	400mm	340mm

Adjustable fixing bracket



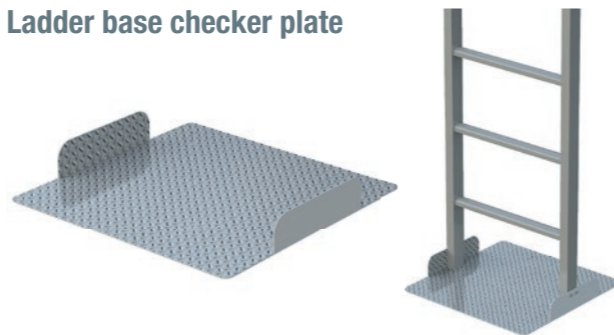
Code	Depth of bracket	Stand-off from wall
KL-BRACKET-600	600-1000mm	540-940mm

Ladder base support angle set



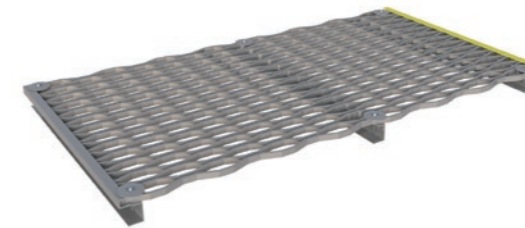
Code	Description
KL-BASE-700	Ladder base support angle set for fixing to metal roof sheet and concrete decks

Ladder base checker plate



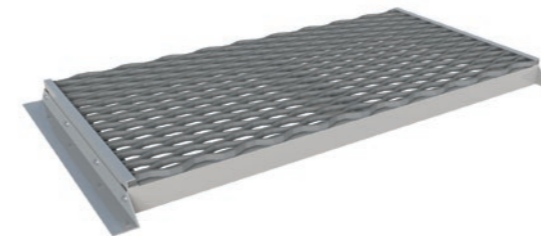
Code	Length	Depth
KL-BASE-PLATE	600mm	600mm
Load spreading checker plate base for use with built-up roofs		

Landing kit



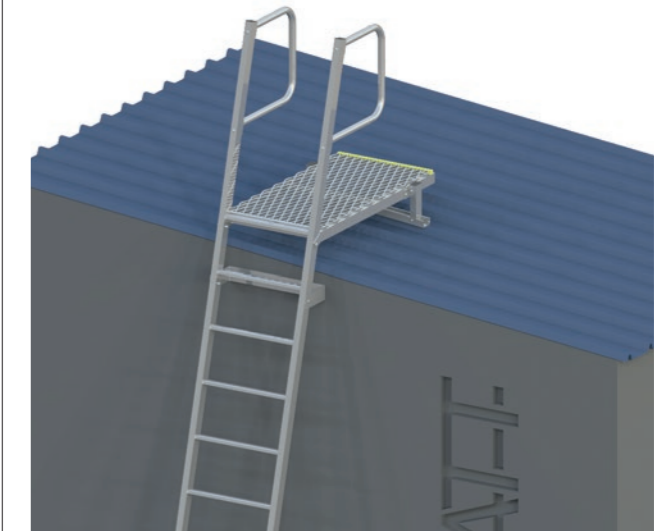
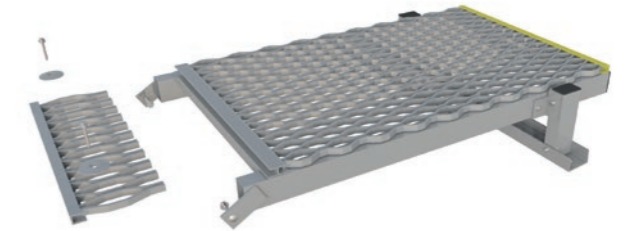
Code	Length	Depth
KL-LANDING KIT	1000mm	600mm

Support landing kit



Code	Description
KL-LANDING-SUPPORT	Support landing kit for use on roofs where support structure is insufficient.

Adjustable landing kit



Code	Description
KL-LANDING-ADJUSTABLE	Adjustable landing kit to provide a level landing for side entry onto pitched roofs.

KATT Accessories

Ladder head walkway kit



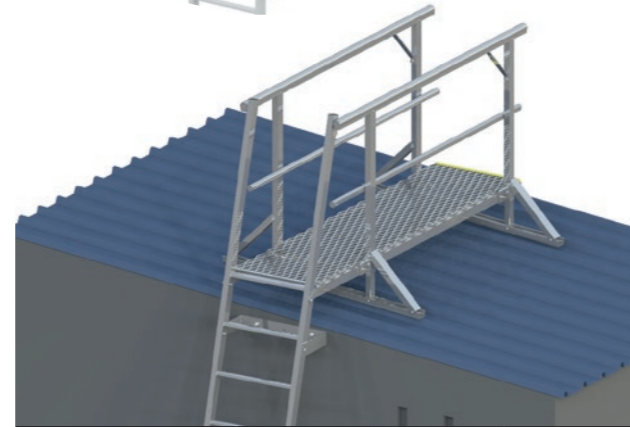
Code	Width	Length
KL-ACCESS-WALKWAY-2400	600mm	2.4m
KL-ACCESS-WALKWAY-3000	600mm	3.0m

Midway rest platform



Code	Depth	Width
KL-REST-MIDWAY-PLATFORM	1200mm	2000mm

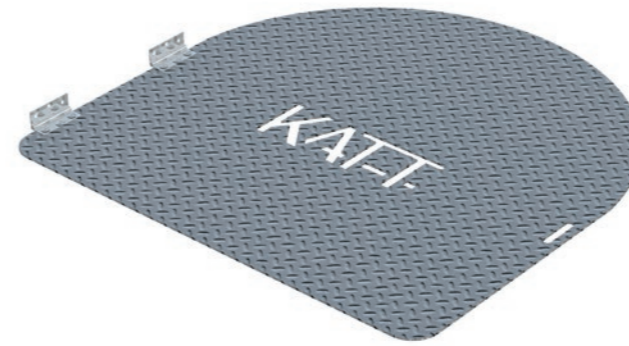
Ladder head walkway kit – adjustable



Code	Width	Length
KL-ACCESS-WALKWAY-2400-A	600mm	2.4m
KL-ACCESS-WALKWAY-3000-A	600mm	3.0m

Adjustable walkway kit to provide a level landing for side entry onto pitched roofs.

Ladder cage gate



Code	Width	Depth
KL-GATE-CAGE	710mm	715mm

Ladder cage gate fixes to the bottom of the cage, and can be locked with a padlock, to prevent unauthorised use of the ladder.

Lockable ladder door

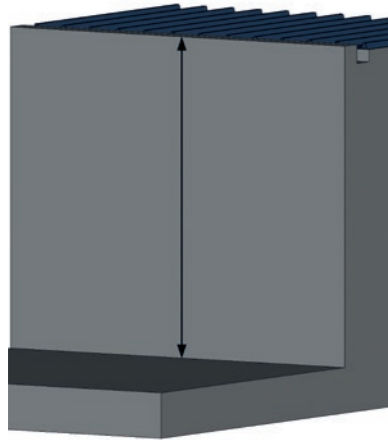


Code	Height
KL-DOOR-LOCKABLE	2400mm

Lockable ladder door fixes to the ladder body, and can be locked with a padlock, to prevent unauthorised use of the ladder.

KATT Basic ladder installation procedure

Step 1



Measure the height of the wall.

Add 50mm for landing platform on RL21, RL31, RL41.

Add 100mm for parapet platform on RL22, RL32, RL42.

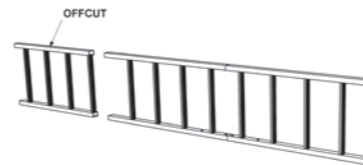
Add 50mm for walkway on RL23, RL33, RL43.

Step 2



Join up the ladder sections.

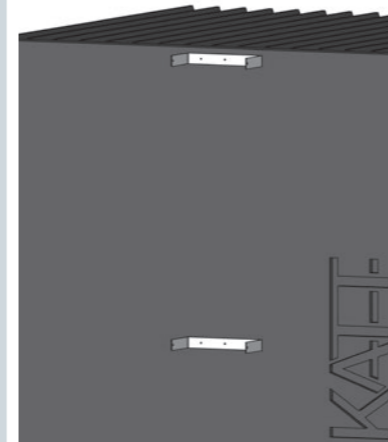
Step 3



Cut the ladder to the required height.

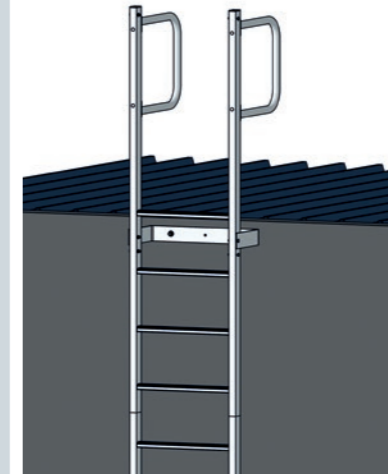
(Wall height plus allowance for landing platform, parapet platform or walkway)

Step 4



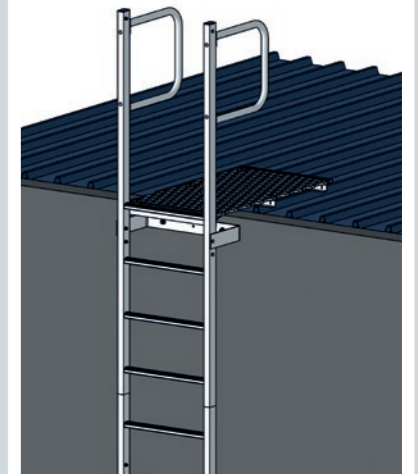
Install the ladder brackets maximum 3m apart. Ensure each ladder section has at least one bracket.

Step 5



Install the ladder. Note – the top rung will finish above the roof.

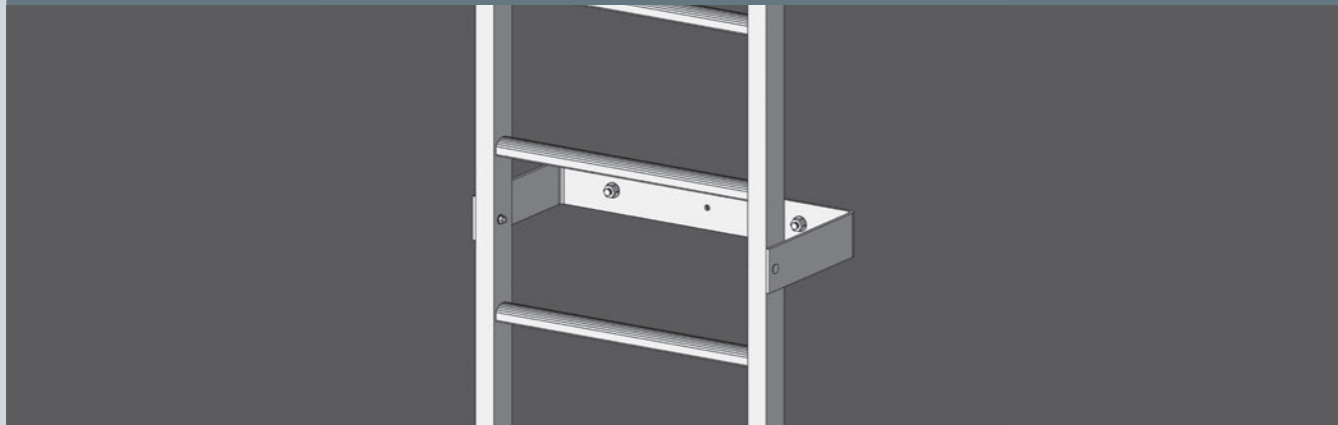
Step 6



Install top landing level with top rung.

Fixing

Fixing of wall brackets to substrate



Minimum fixing requirements for wall brackets:

Steel purlin (minimum 1.2mm thickness)

- Drillfast Stainless steel fixings to suit steel purlin type
- M8 stainless steel toggle bolts or equivalent

Composite panel

- Drillfast Stainless steel HT composite panel fixing to suit panel thickness and steel purlin type

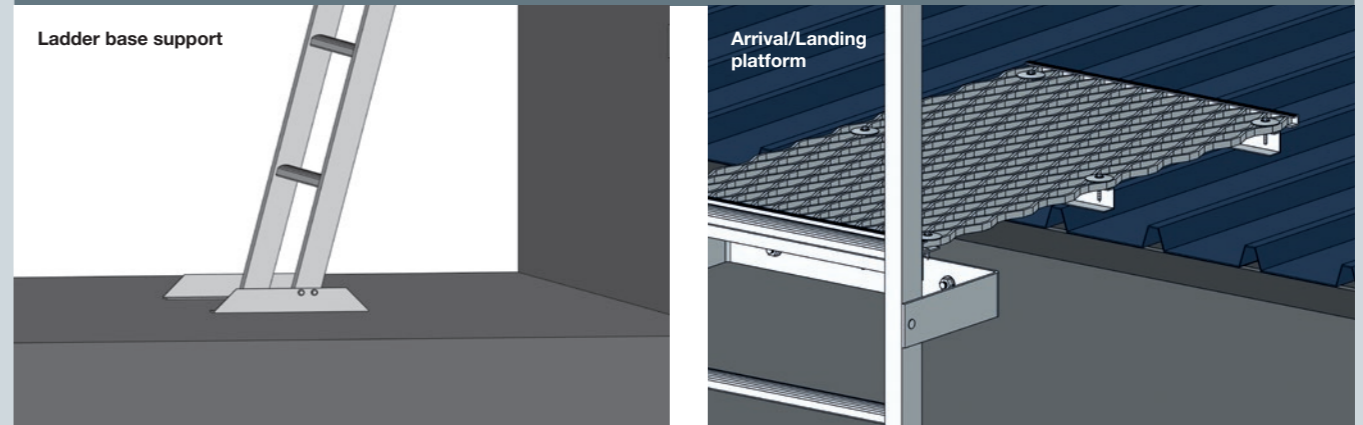
Concrete/Masonry

- M10 stainless steel expanding anchor
- M10 stainless steel/nylon expanding anchor
- M10 stainless steel resin anchor threaded rod

Maximum spacing between fixing brackets is 3m.



Fixing of base support and landings



Minimum fixing requirements for ladder base support and landing platforms:

Profiled metal sheet

- Drillfast Stainless steel fixings or stainless steel rivets to fix to profile

Standing seam

- Drillfast Stainless steel fixings or stainless steel rivets to fix to standing seam clamp fixed to top of seam

Composite panel

- Drillfast Stainless steel fixings or stainless steel rivets to fix to profile

Concrete/Masonry

- Concrete deck fixing

Single Ply/Bituminous warm roof

- Fix ladder to ladder base checker plate



KATT Summary of standards

<p>1</p> <p>Ladder must be fixed at between 90°–75°.</p>	<p>2</p> <p>Minimum 200mm clearance required between ladder to wall, and minimum 150mm clearance required between ladder and a discontinuous obstacle.</p>	<p>3</p> <p>Minimum of 50mm hand clearance on the sides of the ladder except where the brackets are attached to the ladder.</p>	<p>4</p> <p>There must be a minimum of 200mm between the ladder and the wall. There must be minimum of 650mm clearance in front of the ladder and minimum of 650mm width clearance.</p>	<p>5</p> <p>The upper surface of the top rung must be level with the landing platform.</p>	<p>6</p> <p>Top rung to landing. There shall be no gap, or maximum 75mm gap between the top rung and the landing platform.</p>	<p>7</p> <p>The rungs in a ladder flight must be uniformly spaced between 225–300mm. The distance between the departure area and the lowest rung must not exceed the spacing between 2 rungs.</p>	<p>8</p> <p>Brackets must be fixed maximum 3m apart. Note – ensure there is a bracket connected to each ladder section.</p>
<p>9</p> <p>For ladders over 2m, fall protection must be provided. A cage is the preferred choice.</p>	<p>10</p> <p>The lowest part of the cage must start at a height of between 2.2m and 3m above the departure area.</p>	<p>11</p> <p>The distance between cage hoops must not exceed 1.5m.</p>	<p>12</p> <p>The distance between cage straps must not exceed 300mm.</p>	<p>13</p> <p>The clear distances within the hoops of the safety cage must be between 650mm and 800mm. The distance from the rung to the safety cage must be between 650mm and 800mm.</p>	<p>14</p> <p>When the climbing height is 10m or less, one single flight ladder can be installed.</p>	<p>15</p> <p>When the height is greater than 10m, a staggered flight ladder must be installed. The climbing height of the individual ladders must be 6m or less and an intermediate rest platform must be provided between each ladder.</p>	<p>16</p> <p>The distance between the landing platform and the handrail must be 1100mm, and the gap between the handrail and the knee-rail must be 500mm.</p>

Technical specifications

MATERIALS	All components and accessories manufactured from high-grade structural aluminium with options for powder coating.
DIMENSIONS	Overall ladder width – 605mm Distance between stiles – 525mm Rung diameter – 50 x 35mm (profiled) Rung spacing – 300mm Stile extension above landing surface – 1100mm Minimum clearance behind ladder – 200mm (vertical position) Maximum distance between rest platforms – 6M
WEIGHT	Ladder body sections – 2.9kg/M (excludes fixing brackets and fixings) Cage sections – 8.3kg/M
WORKING LOAD LIMIT	Recommended for single person use – 150kg rated. Industrial rated, suited to high frequency usage. Support structure integrity, suitability and fixing method to be assessed and determined by an engineer unless it is clear to a competent person prior to installation.
COMPLIANCE	KATT Ladder System is designed to comply with requirements of BS4211:2005 and relevant statutory HSE guidelines.
PRODUCT WARRANTY	10 years from date of purchase subject to correct installation, use and maintenance, in accordance with manufacturer's specifications and recommendations.
INSPECTION AND MAINTENANCE	Inspection and certification required every 12 months by competent person, in accordance with manufacturer's specification and relevant HSE statutory guidelines.
IMPORTANT NOTE	Failure to supply and/or install proprietary product in accordance with above standards and codes, specifications and instructions, voids complete system certification and/or warranty.



Quality/ISO/testing ISO 9001/ISO 14001

We have successfully achieved and maintained accreditation for ISO 9001, ISO 14001 and BS OHSAS 18001.

We are very aware that the trend in business is an ever-increasing need for higher quality, best practice and better working conditions, and we are doing everything possible to promote this.



Certificate Number 10905
ISO 9001: 2008
ISO 14001: 2004
BS OHSAS 18001: 2007

FIXFAST are committed to sustainability

FIXFAST is committed to reducing the impact of its activities on the environment and to assisting our customers by encouraging them to use sustainable resources. To this end, the company has implemented an environmental management system to continuously improve its environmental performance.

In order to meet this commitment the company will pursue the following objectives:

- to ensure compliance with all applicable environmental legislation and regulations
- to reduce emissions and prevent pollution
- to improve waste-management practices
- to minimise consumption of natural resources
- to minimise noise and other nuisances
- to assist in the management of ecology
- to continuously assess its environmental performance and to assist in the investigation of environmental incidents in which it is involved on operational sites
- to make its environmental information available to interested parties

FIXFAST understands its responsibility to the world we live in. We strive to ensure that everything we do has a minimum impact on the environment.

FIXFAST allocates all the personnel and financial resources necessary to meet its environmental objectives and targets, which are the subject of continuous review. In addition, we empower our employees to take an active interest in environmental issues that affect the company; and we encourage employee involvement in improving our awareness of these issues and our ability to deal with them effectively.

We fully comply with all relevant environmental statutory legislation and regulations, and continuously monitor our environmental performance: implementing environmental and sustainability measures, and identifying potential environmental risks.



Our Product Ranges

- Fastener Systems
- Adhesive Systems
- Roof Drainage Systems
- Rooftop Products
- Height Safety and Access Systems
- Sealing Products
- Weatherproofing Products
- Specialist Tools

Our literature is designed to be as clear and as helpful as possible.

Product Specification File

For detailed information on our entire product range please refer to our Product Specification Binder. It contains details of all technical information and product specifications and is regularly updated.

Should you require assistance our team will be happy to help.



Telephone our Customer Service HOTLINE on 0500 55 32 22 to receive your copy of our Product Specification File

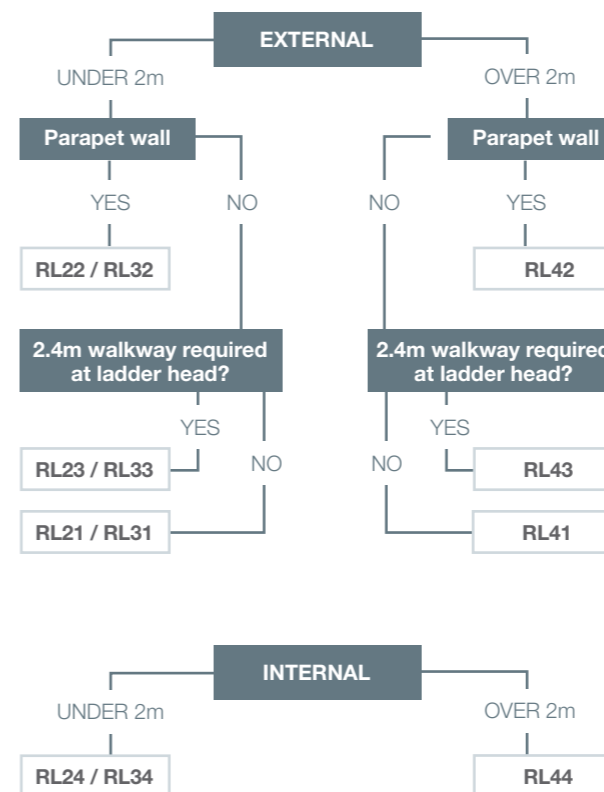
KATT Ladder Enquiry

Please contact us to discuss your KATT ladder requirements.

We can either go through your requirements over the phone, or we can email you a form which highlights the measurements we need to know.



Is your ladder application external or internal?
(up to a roof access hatch?)



Telephone: 0845 450 7483
Email: sales@fixfast.com

or visit our website
www.fixfast.com

FIXFAST

Merlin House
Seven Mile Lane
Borough Green
Sevenoaks
Kent
TN15 8QY

Enquiries

0845 450 7483

Orderline

0500 553 222

International

+44 (0) 1732 882 387

Fax

0845 450 7486

Email

info@fixfast.com

www.fixfast.com



Certificate Number 10905

ISO 9001: 2008
ISO 14001: 2004
BS OHSAS 18001: 2007