

Maximum reliability. Minimum fuss.



Selector Guide

Kingspan Topdek

Kingspan

Fastener Systems and Sealing Products

Contents

Products for Specific Applications	3 - 7
Accessories	8
Technical Data	9 - 10
Technical Notes	11

Introduction to Fixfast

Fixfast design, manufacture and supply specialist building fasteners and components for the walls and roofs of industrial, commercial and larger residential buildings. We collaborate with major building envelope system manufacturers, such as Kingspan, to provide them and their clients with engineered fastening and sealing solutions.

This selector guide has been created as an easy to use reference document, identifying the most common fasteners and components for use when installing the Kingspan Topdek panel system.

Full technical data for these products along with application uses can be found on our website at www.fixfast.com by searching for the product.

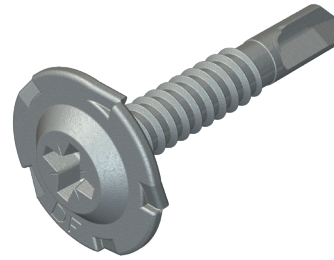
Our specification team can assist in providing NBS specifications for specific projects, whilst our customer services team can answer questions regarding the usage or ordering of Fixfast products.

If you have any queries regarding our products or services then please do contact our customer services team on 0800 304 7616 or by emailing sales@fixfast.com.

Topdek fixing to light steel purlins or other light steel 1.2 - 3.0mm

Use DrillFast® DF3-TD fasteners

Drive type - No.3 Pozi drive.
See page 8 for specialist installation tool.



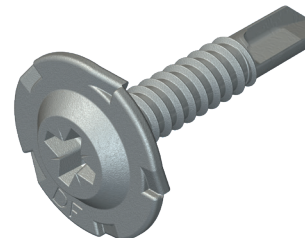
Panel Core Thickness	Total Panel Thickness	Fastener Code
71	109	DF3-TD-6.3 x 30
80	118	DF3-TD-6.3 x 30
91	129	DF3-TD-6.3 x 30
100	138	DF3-TD-6.3 x 30
120	158	DF3-TD-6.3 x 30

SFW available for low-profile solution - no panel coring required.

Topdek fixing to light steel purlins or other light steel 1.6 - 6.0mm

Use DrillFast® DF6-TD fasteners

Drive type - No.3 Pozi-drive.
See page 8 for specialist installation tool.



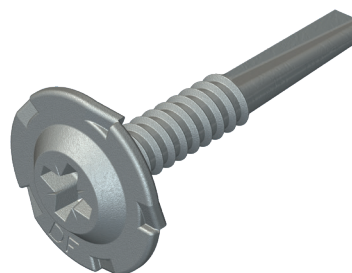
Panel Core Thickness	Total Panel Thickness	Fastener Code
71	109	DF6-TD-6.3 x 30
80	118	DF6-TD-6.3 x 30
91	129	DF6-TD-6.3 x 30
100	138	DF6-TD-6.3 x 30
120	158	DF6-TD-6.3 x 30

Fastener is suited for use in a 'sleeved' purlin application

Topdek fixing to heavy steel purlins or other heavy steel 4.0 - 12.0mm

Use DrillFast® DF12-TD fasteners

Drive type - No.3 Pozi-drive.
See page 8 for specialist installation tool.

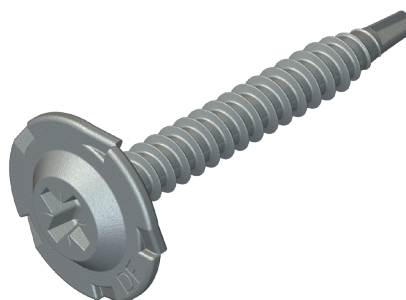
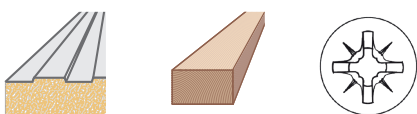


Panel Core Thickness	Panel Overall Thickness	Fastener Code
71	109	DF12-TD-6.3 x 45
80	118	DF12-TD-6.3 x 45
91	129	DF12-TD-6.3 x 45
100	138	DF12-TD-6.3 x 45
120	158	DF12-TD-6.3 x 45

Topdek fixing to timber purlins or other wooden structures

Use Drillfast DFT-TD fasteners.

Drive type - No.3 Pozi-drive.
See page 8 for specialist installation tool.

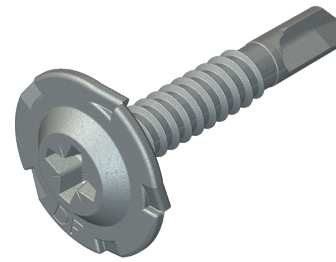
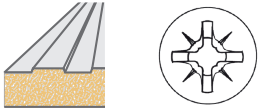


Panel Core Thickness	Panel Overall Thickness	Fastener Code
71	109	DFT-TD-6.3 x 45
80	118	DFT-TD-6.3 x 45
91	129	DFT-TD-6.3 x 45
100	138	DFT-TD-6.3 x 45
120	158	DFT-TD-6.3 x 45

Topdek stitching panel joints

Use DrillFast® DF3-TD fasteners

Drive type - No.3 Pozi Drive.
See page 8 for specialist installation tool.



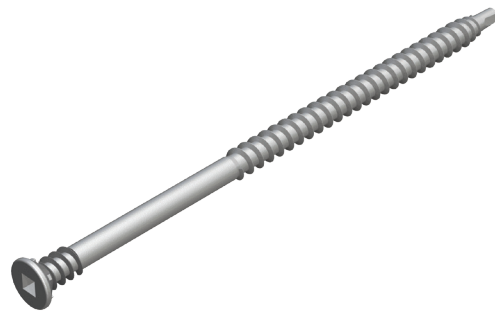
Fastener Code Carbon

DF3-TD-6.3 x 30

Topdek fixing flashing material into the crown of the base sheet

Use SureFast SF-RS-CL fasteners

Drive type - 2SQ - Square drive.



Panel Core Thickness	Panel Overall Thickness	Fastener Code
71	109	SF-RS-CL-5.2 x 125
80	118	SF-RS-CL-5.2 x 150
91	129	SF-RS-CL-5.2 x 150
100	138	SF-RS-CL-5.2 x 175
120	158	SF-RS-CL-5.2 x 175

Sealing end and side lap applications

Use Seelex BR gun grade butyl rubber sealant



Sealant Code	Cartridge Size (ml)	Colour
SEELEX-BR	380	Grey or White

Strip Sealant for sealing end and side lap applications

Use A Class butyl strip sealant



Sealant Code	Thickness x Width (mm)	Roll Length (m)
A-5 x 6 x 9.6	5 x 6	9.6

To prevent ballooning of the laps when welding

Use double sided tape



Sealant Code	Roll length (m)	Colour
DST-50	50	White

Fire rated foam insulation

Use Firefoam B1

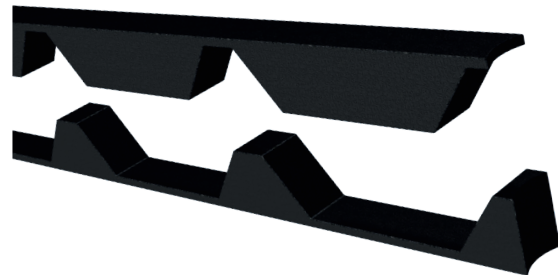


Sealant Code	Cartridge Size (ml)	Fitting
FIREFOAM-B1-GUN	750	Screwtop
FIREFOAM-B1-HAND	750	Manual

Filler blocks

Use EPDM foam fillers.

Also available in fire resistant material.
Please enquire for details.



Code

EPDM KINGSPAN TOPDEK

DRIVEBAR

One-piece drivebar for installing the Topdek fastener range - magnetic 3-PZD drive. Available in 150 and 200mm lengths.

Product Code: DF-TD DRIVEBAR



Many other tools and accessories are available.

Please see the current Fixfast Product Directory, go to www.fixfast.com, or ask the Fixfast customer service team.

Technical Data

DF3-TD Range	
Material	Steel SAE 1022 case hardened
Coating	Organic
Drilling Capacity	1.2mm - 3.6mm steel
Pull-out Values (axial load resistance)	
Substrate	Characteristic value
1.2mm Steel	1.57kN
2.0mm Steel	2.95kN
3.0mm Steel	5.42kN

DF6-TD Range	
Material	Steel SAE1022 case hardened
Coating	Organic
Drilling Capacity	1.6mm - 6.0mm steel
Pull-out Values (axial load resistance)	
Substrate	Characteristic value
3.0mm Steel	6.27kN
4.0mm Steel	9.11kN
6.0mm Steel	15.40kN

DF12-TD Range	
Material	Steel SAE 1022 case hardened
Coating	Organic
Drilling Capacity	4.0mm - 12.0mm steel
Pull-out Values (axial load resistance)	
Substrate	Characteristic value
4.0mm Steel	8.04kN
6.0mm Steel	15.43kN
8.0mm Steel	15.43kN
12.0mm Steel	15.43kN

Technical Data

DFT-TD Range

Material	SAE1022 steel case hardened
Coating	Organic
Drilling Capacity	0.9mm S275 steel
Pull-out Values (axial load resistance)	
Substrate	Characteristic value
Softwood - 35mm Embedment	3.40kN

SF-RS-CL Range

Material	Steel SAE1022 case hardened
Coating	Organic
Drilling Capacity	0.5mm - 2.0mm steel
Pull-out Values (axial load resistance)	
Substrate	Characteristic value
0.7mm Steel	0.94kN
0.9mm Steel	1.47kN
1.2mm Steel	2.05kN
18.0mm OSB	1.52kN
Softwood 35mm embedment	4.23kN
18.0mm Ply	2.01kN

Fastener Data

- + All dimensions are subject to manufacturing tolerances.
- + Performance values are tested and calculated according to Eurocode procedures and appropriate safety factors should be applied in any calculations using these values.

Fastener Selection

- + Recommended fastener lengths are calculated using standard tolerances for the fasteners and the combination of materials in the build-up.
- + If there is distortion in the supporting construction, or other non-standard application detail, longer fasteners may be necessary than those shown. Always check the actual circumstances before deciding on a particular length.

Further Assistance

- + For any enquiry, or to discuss your requirements with someone knowledgeable, call the Fixfast customer service team on **0800 304 7616**.
- + Full literature is available for the Fixfast range, or visit **www.fixfast.com**
- + Other performance data may be available on request. For more unusual applications, tests can be carried out in our in-house technical centre to provide the necessary data.
- + Site visits are also possible, particularly for pull-out performance into concrete, masonry or other variable substrates. Please ask for a Site Visit Request form if you think this service would be useful.
- + CAD files of fasteners are available on request for inclusion in drawings.

The information contained in this document is based on the specification of the Kingspan Topdek system and Fixfast's product data. It is provided in good faith but Fixfast cannot be held liable for any errors. Performance is dependent on adherence to the conditions and instructions contained in Fixfast's Technical Data Sheets for the products shown. Performance values should be approved by a qualified engineer, and Fixfast recommend preliminary tests for any application where variation is possible in the materials or substrates involved.



Merlin House
Seven Mile Lane
Borough Green
Sevenoaks
Kent
TN15 8QY

Enquiries

0800 304 7616

International

+44 (0) 1732 882387

Fax

0845 450 7486

Email

info@fixfast.com



Certificate number 10905
ISO 9001, ISO 14001
OHSAS 18001