

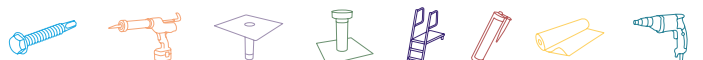
Maximum reliability.
Minimum fuss.



SureFast®

The flat roofing
mechanical
fastening system

 **FIXFAST**





“We use Fixfast as a reliable, honest and proactive supplier...”

SureFast® Contents

Introduction

About Fixfast 03

Production and certification

Manufacturing 04

Quality assurance 05

Technical support

Wind load calculations 07

Technical back-up and support 07

SureFast® product range

Flat roofing fastening system 08 – 09

Fastener range 10

Pressure plates and termination bars 11

Selector chart

Selector and application charts 12 – 13

Product comparison tables

SureFast® codes vs. Global codes 14 – 17

Fixfast warranty

Fixfast warranty 18 – 19

Introduction

Fixfast, quality and reliability for over 40 years

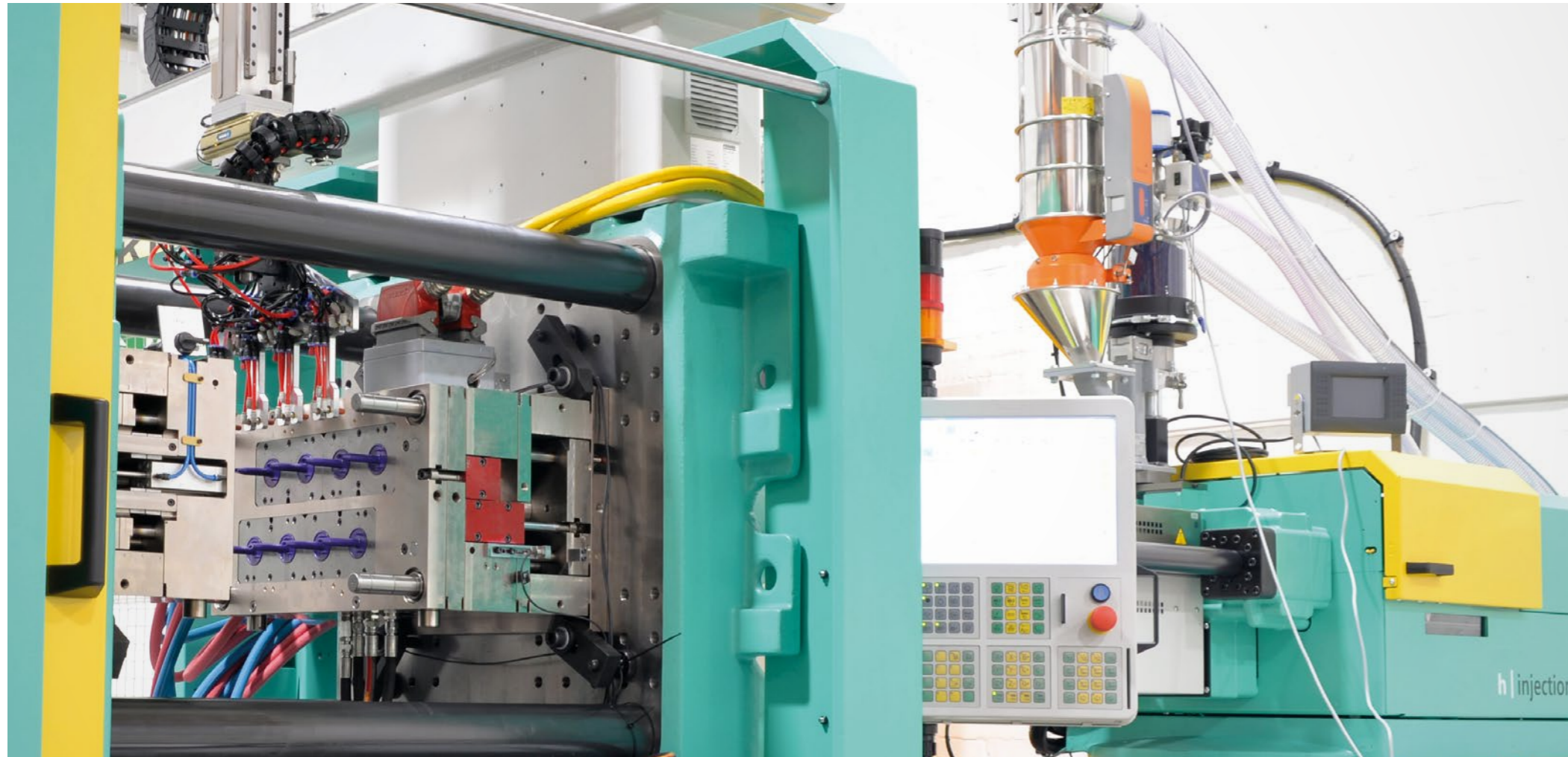
Fixfast has always focused on a very specific market and we design, manufacture and supply fasteners and components for the walls and roofs of industrial, commercial and larger residential buildings. We provide our customers with a broad range of products that have been specifically chosen to service them with the highest level of reliability.

Fixfast’s collaborative approach and desire to help create successful buildings means that we have become well respected in the market, forging trustworthy relationships with major industry players.

First class service

Our staff are trained to know all about the products they sell, so they can help you with useful advice and answer any technical queries you may have. We think you’ll enjoy the experience of purchasing from Fixfast as our number one focus is to provide maximum reliability with minimum fuss.





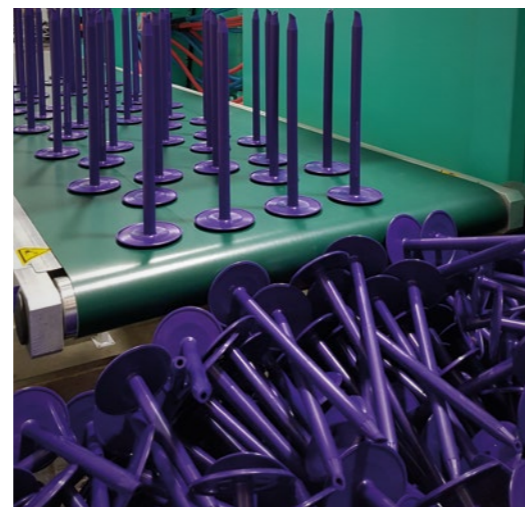
Production and certification

Manufacturing

Over the past 40 years, Fixfast has fine-tuned our product ranges to ensure each item serves its purpose in the best way possible. Our team has built up the resources for both innovative and well-proven designs, with close monitoring systems ensuring reliable quality and efficiency through state-of-the-art manufacturing to unique specifications.

In recent years Fixfast have invested heavily in high specification machinery to manufacture a variety of products including the new SureFast® range of tube washers.

Further significant investment has been made in the development of our fastener range which has seen the inclusion of ultra high corrosion resistant fasteners and further developments to our stainless A4/316 range.



CE marking for construction fasteners

From 1 July 2013, under the Construction Products Regulation (CPR), it became mandatory for manufacturers to apply CE marking to any of their products covered by a harmonised European standard (hEN) or a European Technical Assessment (ETA).

Where no such standards exist, the CPR does not apply - which is the case for the majority of Fixfast products. However, Fixfast have already obtained a voluntary European Technical Assessment for our SureFast® range of fasteners, and are working to obtain voluntary ETA's for all our fastener products.

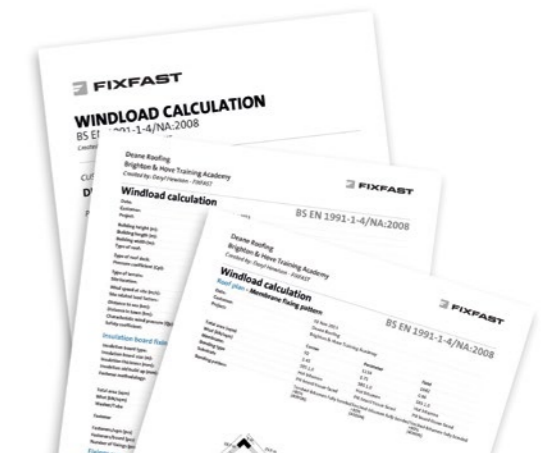


Quality assurance

ISO Accredited

Fixfast have ISO accreditations for 9001 for quality assurance, 14001 for environmental management, and BS OHSAS 18001 for occupational health and safety. We are very aware of the ever-increasing drive towards higher quality, best practice and better working conditions, and we do everything possible to promote this.





Wind load calculations

Wind can put considerable force on a structure and there are many things that can affect that force and how the installation handles it. Location, height, the size and shape of the building, whether the openings are large or small, the type of surrounding landscape and more. Leaving a roof fixing pattern to chance is a big risk, and over-specifying for safety can cost valuable money for the contractor or client. Fortunately there are UK-specific European regulations which detail exactly how to arrive at a safe fixing pattern, but they are technically very complex.

The technical support team at Fixfast can carry out wind load calculations for projects using membranes, providing results for the mechanical fixing of the membrane itself, the insulation, or both.

The calculation report is clear and comprehensive, showing fixing patterns by roof zone and for each component. All calculations are in accordance with Eurocode 1991-1-4 and use data from testing according to ETAG 006 and EN 16002:2010.

Fastener system selection for tapered insulation schemes

Using tapered insulation to create falls or to reduce ponding on a flat roof is a common occurrence because it reduces the amount of work required in building a fall into a roof structure or concrete deck. The only downside is that the varying thicknesses of insulation mean you need various lengths of fasteners for the different areas of the roof.

Don't let this hold you up! If you can send us your plan of the tapered insulation scheme, our experts in the technical team will work out the optimum fastener requirements for the different thicknesses of insulation. We will send you a schedule which details what tubes and fasteners are required for the tapered insulation scheme.

Technical support

Trained and experienced technicians

Every construction project, particularly on existing buildings, holds surprises. If you're unsure how the materials you're fixing into will respond to the stresses being put on them, we can carry out the necessary tests to put your mind at ease.

Fixfast's technical support staff are highly trained, experienced at knowing what tests to carry out and how to read them. For example, where you're fixing into old materials, we can conduct pull-out tests and provide you with a detailed report showing exactly how a given Fixfast product will perform in the circumstances.



Technical back-up and support

Technical calculations

Calculations are required on many projects to determine the type and quantity of the fastener system. Fixfast are able to carry out both windload and tapered scheme calculations providing you with accurate information in a complete report.

Site support and testing

Fixfast are committed to exceptional onsite support. Whether it is offering advice, testing to ensure the correct products are used, or producing reports confirming these details, you can be sure that your requirement will be attended to quickly and efficiently. Our trained onsite support team is available to visit you at short notice, and will quickly produce a comprehensive report.

SureFast® – The flat roofing mechanical fastening system



The SureFast® fastening system offers an excellent range of specialist fasteners for mechanically fastening membrane or insulation to steel, aluminium, concrete and timber decks.

Through close liaison with roof system manufacturers worldwide, and by understanding contractor needs, the SureFast® fastener range has been developed to provide simple, speedy and thermally efficient fastener solutions.



The SureFast® tube system has been specifically designed to overcome the cold-bridging effect of mechanical fastenings. Due to the thermal properties of SureFast® tube washers, U-value calculations are greatly simplified as minimal correction factors or penalties need to be considered. This not only saves time at the design stage, but also prevents any increase in material costs incurred by thicker insulation requirements.



Features and benefits

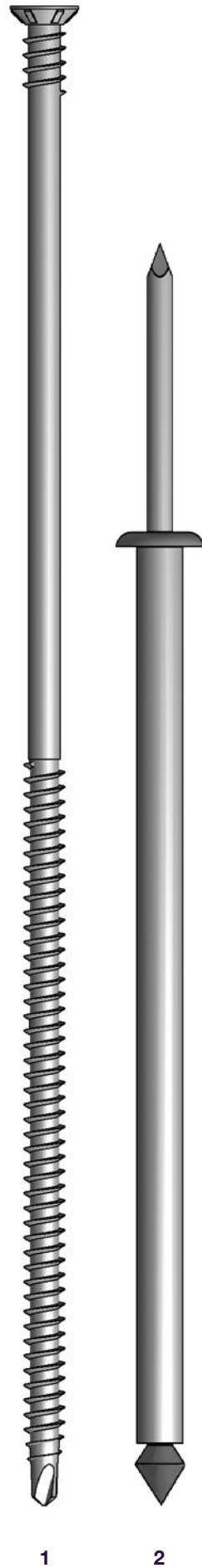


The SureFast® tube washer system is a combination of a high-quality polypropylene tube washer and a SureFast® stainless or carbon steel fastener. Designed as a complete system, the fasteners can still be used separately for certain applications. As well as creating the thermal break, the combination means that our standard range is suitable for fixing a roof build-up of up to 500mm, allowing for the increasing insulation thicknesses that are now specified.



- Tubes to suit both insulation and membrane, provides a complete system.
- Comprehensive size range, available in lengths up to 250mm.
- Manufactured from high-quality polypropylene, able to withstand harsh roof-top environments.
- 40 year warranty available - for peace of mind.
- Practically eliminates thermal transmittance – no correction factors or penalties need to be considered.
- Barbed tube option to achieve higher design values - sometimes results in less fasteners being required.
- Pointed tube aids penetration through membrane and insulation.
- Low profile tube for use with Trocal® or TermBar
- One tube diameter suits all fastener types 4.8 – 6.1mm dia.
- 50mm dia. membrane tube for increased pull-over.

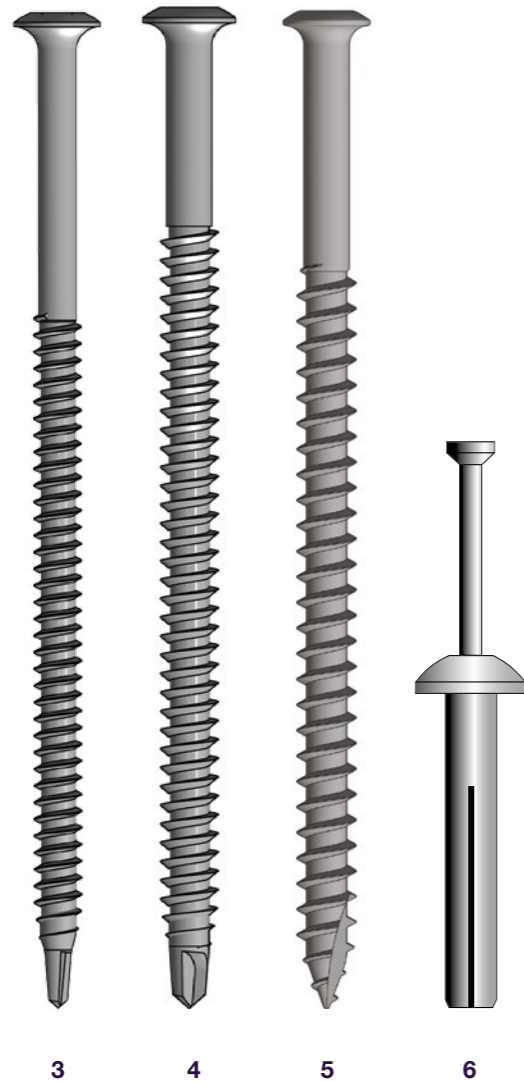
SureFast® – The fastener range



Fasteners for every substrate

There are a variety of deck substrates in flat roofing construction and Fixfast has specifically developed fasteners to suit most applications. Careful design and specification of drillpoint, thread formation and other features ensure that the fastener will perform in application.

The SF-RS-4.8, 5.8 and 6.1 can all be used in conjunction with the SureFast® tube range. Fastening into aluminium or concrete would be subject to a satisfactory pull out test being carried out.



1 SF-RS-CL

Use: Countersunk screw for membrane attachment to steel and timber decks

Fastener material: Carbon steel

2 SF-RIV

Use: For insulation and membrane attachment to fragile decks

Fastener material: Aluminium

3 SF-RS-4.8

Use: For attachment of insulation and membrane to metal and timber decks

Fastener material: A4/316 stainless or carbon steel

4 SF-RS-5.8

Use: For attachment of insulation and membrane to metal and timber decks

Fastener material: Carbon steel or high corrosion resistant stainless steel (HCR)

5 SF-RS-6.1

Use: For the attachment of insulation and membrane to concrete, timber and some steel decks

Fastener material: A4/316 stainless or carbon steel

6 SF-ADR

Use: For attachment of flashing details to concrete

Fastener material: Aluminium

Features and benefits

- A4/316 Grade stainless steel versions for harsh environments available in certain ranges.
- Bucket packaging on certain products – ease of transport and keeps fasteners dry before installation.
- Comprehensive size range – Available in lengths from 25mm to 300mm.
- HCR high corrosion resistant version available – for ultimate corrosion resistance e.g. swimming pools.
- SF-RS 5.8 diameter - gives superior pull out performance in a variety of decks.
- TX25 and 2SQ drive for ease of installation.

SureFast® – Pressure plates and termination bars



Pressure plates

For applications where SureFast® tubes cannot be used, Fixfast manufacture a range of pressure plates for insulation and membrane attachment in stainless steel and high quality corrosion resistant steel to compliment the complete fastener range.

1 SF-P-40-F Plate material: Steel	2 SF-P-70-F Plate material: Steel
3 SF-P-70-D Plate material: Steel	4 SF-P-SS-70-D Plate material: Stainless steel 304
5 SF-P-SSA4-40-F Plate material: Stainless steel 316	6 SF-P-8240-S Plate material: Steel
7 SF-P-8240-D Plate material: Steel	

Termination Bars

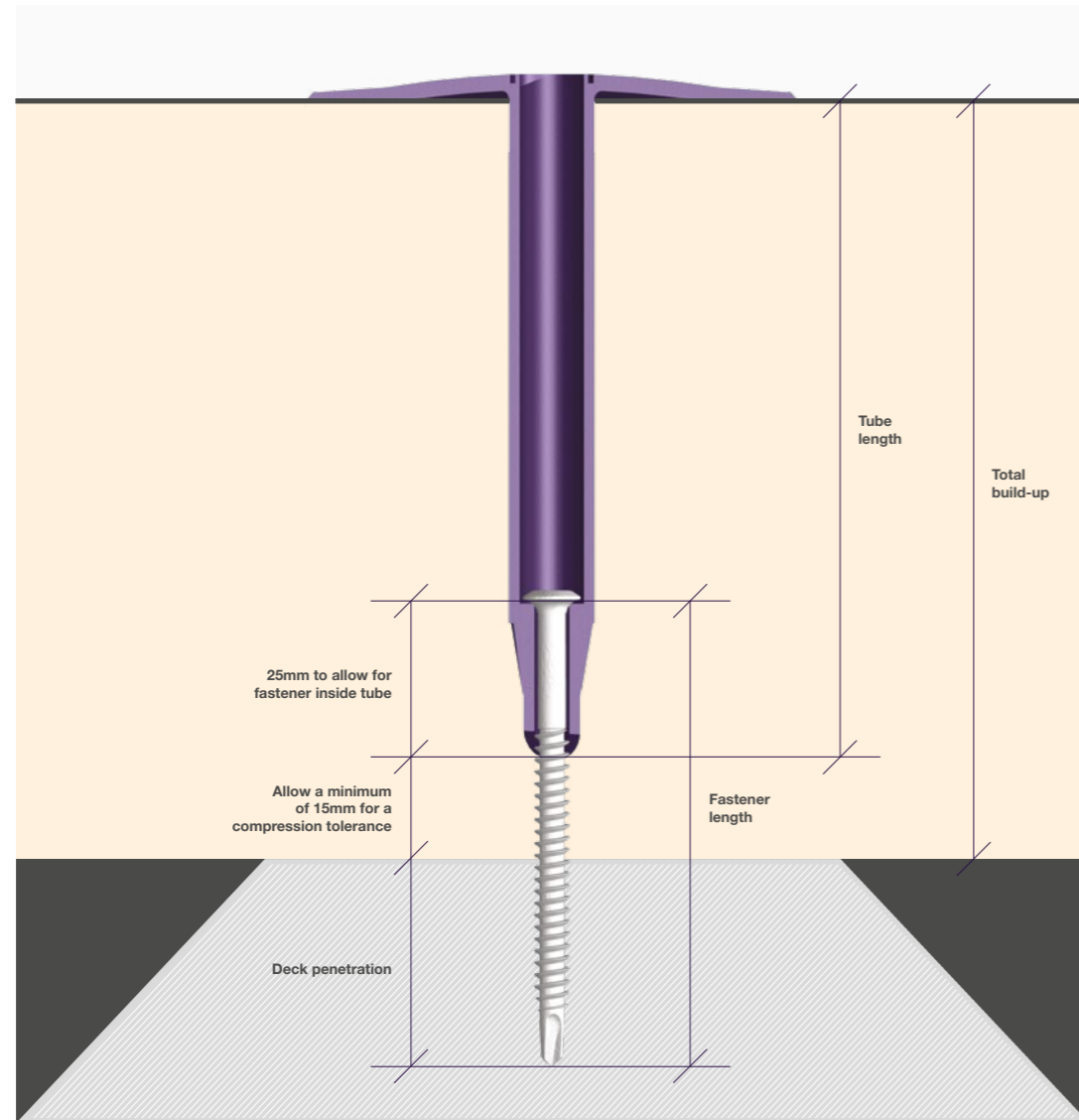
Four profiles of termination bar are available covering the vast majority of applications. Typical applications include termination of membrane at parapet walls or penetrations.

1 SF-BAF-2000 Description: Flat bar Bar material: Aluminium Hole size/frequency: 6.5mm @ 150mm centres	2 SF-BAC-2000 Description: Channel bar Bar material: Aluminium Hole size/frequency: Alternate 7mm and 15mm @ 150mm centres For use with SF-T-LP
3 SF-BAL-2000 Description: Lipped bar Bar material: Aluminium Hole size/frequency: 6.5mm @ 150mm centres	4 SF-BSC-1950 Description: Channel bar Bar material: Steel Hole size/frequency: 6.5mm @ 150mm centres



SureFast® Selector Chart

The SureFast® fasteners have been designed to fix to various different substrates. Against each fastener we have given the build-up figures for each fixing application that the fastener can be used for. These build-up figures take into account the following recommended fastener penetrations when fixing to deck substrates.



Application	Penetration / Embedment
Steel decking	15mm through underside
Plywood	18mm minimum thickness 12mm through underside
Timber decking (not included in table opposite)	25mm minimum thickness 12mm through underside
Timber joists (not included in table opposite)	35mm embedment
Structural concrete	25mm embedment

Insulation thickness	Tube length	Drive bar length	Steel deck			Concrete (subject to site pull test)	18mm plywood or OSB	
			SF-RS-4.8	SF-RS-SSA4-4.8	SF-RS-5.8		SF-RS-6.1	SF-RS-5.8
40	25	50	60	60	55	75	75	80
50	25	50	80	80	65	75	85	80
60	25	50	80	80	75	85	95	100
70	50	150	60	60	65	75	75	80
80	50	150	80	80	75	85	85	100
90	75	150	60	60	55	75	75	80
100	75	150	80	80	65	75	85	80
110	75	150	80	80	75	85	95	100
120	100	150	60	60	65	75	75	80
130	100	150	80	80	75	85	85	100
140	125	200	60	60	55	75	75	80
150	125	200	80	80	65	75	85	80
160	125	200	80	80	75	85	95	100
170	150	200	60	60	65	75	75	80
180	150	200	80	80	75	85	85	100
190	175	300	60	60	55	75	75	80
200	175	300	80	80	65	75	85	80
210	175	300	80	80	75	85	95	100
220	200	300	60	60	65	75	75	80
230	200	300	80	80	75	85	85	100
240	225	300	60	60	55	75	75	80
250	225	300	80	80	65	75	85	80
260	225	300	80	80	75	85	95	100
270	250	300	60	60	65	75	75	80
280	250	300	80	80	75	85	85	100
290	250	300	80	80	85	100	95	100
300	250	300	100	100	95	100	105	120

New SureFast® codes vs. old Global codes

SureFast® Code	Global Code
SureFast® Tube Washer	Global R-75 Washer
Use: for fixing insulation	
SF-T-75 x 25	R-75 x 20
—	R-75 x 40
SF-T-75 x 50	R-75 x 60
SF-T-75 x 75	R-75 x 80
—	R-75 x 90
SF-T-75 x 100	R-75 x 100
SF-T-75 x 125	R-75 x 120
SF-T-75 x 150	R-75 x 150
SF-T-75 x 175	R-75 x 180
SF-T-75 x 200	R-75 x 210
SF-T-75 x 225	R-75 x 240
SF-T-75 x 250	R-75 x 270
—	R-75 x 300
—	R-75 x 330

SureFast® Code	Global Code
SureFast® Tube Washer Barbed	Global RB-48 Barbed Tube Washers
Use: for fixing membrane	
SF-TB-50 x 25	RB-48 x 20
SF-TB-50 x 50	RB-48 x 40
—	RB-48 x 60
SF-TB-50 x 75	RB-48 x 80
—	RB-48 x 90
SF-TB-50 x 100	RB-48 x 100
SF-TB-50 x 125	RB-48 x 120
SF-TB-50 x 150	RB-48 x 150
SF-TB-50 x 175	RB-48 x 180
SF-TB-50 x 200	RB-48 x 210
SF-TB-50 x 225	RB-48 x 240
SF-TB-50 x 250	RB-48 x 270
—	RB-48 x 300
—	RB-48 x 330

SureFast® Code	Global Code
SureFast® Tube Washer Low Profile	Global CT Tube Washers
Use: for fixing SF-BAC-2000 teribar	
SF-T-LP x 40	CT-40
—	CT-60
SF-T-LP x 75	CT-80
—	CT-90
SF-T-LP x 100	CT-100
SF-T-LP x 125	CT-120
SF-T-LP x 150	CT-150
—	CT-180
—	CT-210
—	CT-240
—	CT-270
—	CT-300
—	CT-330

SureFast® Code	Global Code
SureFast® Tube Washer Low Profile	Global ST Tube Washers
Use: for fixing Sika Trocal 'S' membrane	
SF-T-LP x 40	ST-30
—	ST-50
SF-T-LP x 75	ST-70
—	ST-90
SF-T-LP x 100	ST-110
SF-T-LP x 125	ST-130
SF-T-LP x 150	ST-160
—	ST-190
—	ST-220
—	ST-250
—	ST-280

SureFast® Code	Global Code
SureFast® Low Profile Plug	Global ST Plug
Use: for use with SF-T-LP tubes	
SF-T-LPP	ST-Plug

SureFast® Roofing Screw	Global BS-5.8 Fasteners
Use: for fastening to steel and timber decks. Drilling capacity into steel - 2x1.0mm	
SF-RS-5.8 x 40	BS-5.8 x 40
SF-RS-5.8 x 55	BS-5.8 x 55
SF-RS-5.8 x 65	BS-5.8 x 65
SF-RS-5.8 x 75	BS-5.8 x 75
SF-RS-5.8 x 85	BS-5.8 x 85
SF-RS-5.8 x 95	BS-5.8 x 95
SF-RS-5.8 x 105	BS-5.8 x 105
SF-RS-5.8 x 115	BS-5.8 x 115
SF-RS-5.8 x 125	BS-5.8 x 125
SF-RS-5.8 x 150	BS-5.8 x 150
SF-RS-5.8 x 175	BS-5.8 x 175
SF-RS-5.8 x 200	BS-5.8 x 200
SF-RS-5.8 x 250	BS-5.8 x 250
SF-RS-5.8 x 300	BS-5.8 x 300

SureFast® Roofing Screw Stainless A4	Global BS-A4-4.8 Stainless Fasteners
Use: for fastening to steel decks and 18mm ply/OSB decks. Drilling capacity into steel: 2 x 1.0mm	
SF-RS-SSA4-4.8 x 40	BS-A4-4.8 x 40
SF-RS-SSA4-4.8 x 60	BS-A4-4.8 x 60
SF-RS-SSA4-4.8 x 80	BS-A4-4.8 x 80
SF-RS-SSA4-4.8 x 100	BS-A4-4.8 x 100
SF-RS-SSA4-4.8 x 120	BS-A4-4.8 x 120
SF-RS-SSA4-4.8 x 160	BS-A4-4.8 x 160
SF-RS-SSA4-4.8 x 200	BS-A4-4.8 x 200

SureFast® Roofing Screw Stainless HCR	
Use: for fastening to steel, aluminium and timber decks in high corrosion areas	
SF-RS-SSHCR-5.8 x 60	
SF-RS-SSHCR-5.8 x 80	

“We regard your service as being second to none”

New SureFast® codes vs. old Global codes



SureFast® Code	Global Code
----------------	-------------

SureFast® Roofing Screw	Global BS-4.8 Fasteners
-------------------------	-------------------------

Use: for fastening to steel decks. Drilling capacity into steel - 2 x 1.0mm

SF-RS-4.8 x 40	BS-4.8 x 50
SF-RS-4.8 x 60	BS-4.8 x 60
—	BS-4.8 x 70
SF-RS-4.8 x 80	BS-4.8 x 80
—	BS-4.8 x 90
SF-RS-4.8 x 100	BS-4.8 x 100
—	BS-4.8 x 110
SF-RS-4.8 x 120	BS-4.8 x 130
—	BS-4.8 x 150
—	BS-4.8 x 170
—	BS-4.8 x 190



SureFast® Roofing Screw Countersunk Locking	Global CLS-5.2 Fasteners
---	--------------------------

Use: for fastening to steel decks. Drilling capacity into steel - 2 x 1.0mm

SF-RS-CL-5.2 x 25	CLS-5.2 x 25
SF-RS-CL-5.2 x 40	CLS-5.2 x 40
SF-RS-CL-5.2 x 55	CLS-5.2 x 55
SF-RS-CL-5.2 x 75	CLS-5.2 x 75
SF-RS-CL-5.2 x 85	CLS-5.2 x 85
SF-RS-CL-5.2 x 95	CLS-5.2 x 95
SF-RS-CL-5.2 x 105	CLS-5.2 x 105
SF-RS-CL-5.2 x 115	CLS-5.2 x 115
SF-RS-CL-5.2 x 125	CLS-5.2 x 125
SF-RS-CL-5.2 x 150	CLS-5.2 x 150
SF-RS-CL-5.2 x 175	CLS-5.2 x 175
SF-RS-CL-5.2 x 200	CLS-5.2 x 200
SF-RS-CL-5.2 x 250	CLS-5.2 x 250
SF-RS-CL-5.2 x 300	CLS-5.2 x 300



SureFast® Code	Global Code
----------------	-------------

SureFast® Roofing Screw	Global HD-6.1 Fasteners
-------------------------	-------------------------

Use: for fastening to concrete, timber and some steel decks

SF-RS-6.1 x 30	HD-6.1 x 30
SF-RS-6.1 x 50	HD-6.1 x 50
SF-RS-6.1 x 75	HD-6.1 x 75
SF-RS-6.1 x 85	HD-6.1 x 85
SF-RS-6.1 x 100	HD-6.1 x 100
SF-RS-6.1 x 125	HD-6.1 x 125
SF-RS-6.1 x 150	HD-6.1 x 150
SF-RS-6.1 x 175	HD-6.1 x 175
SF-RS-6.1 x 200	HD-6.1 x 200
SF-RS-6.1 x 225	HD-6.1 x 225
SF-RS-6.1 x 250	HD-6.1 x 250
SF-RS-6.1 x 275	HD-6.1 x 275
SF-RS-6.1 x 300	HD-6.1 x 300



SureFast® Roofing Screw Stainless A4	
--------------------------------------	--

Use: for fastening to concrete, timber, aluminium and some steel decks

SF-RS-SSA4-6.1 x 50	
SF-RS-SSA4-6.1 x 80	
SF-RS-SSA4-6.1 x 120	



SureFast® Code	Global Code
----------------	-------------

SureFast® Peel Rivet	Global GPR Rivets
----------------------	-------------------

Use: for fastening insulation and membrane to thin decks and difficult substrates

SF-RIV-6.3 x 50	GPR-6.3 x 50
SF-RIV-6.3 x 100	GPR-6.3 x 100
SF-RIV-6.3 x 125	GPR-6.3 x 125
SF-RIV-6.3 x 150	GPR-6.3 x 150
SF-RIV-6.3 x 175	GPR-6.3 x 175
SF-RIV-6.3 x 200	GPR-6.3 x 200

SureFast® Bar Aluminium Channel	Global Termination Bar
---------------------------------	------------------------

SF-BAC-2000	ATB-C-2000
-------------	------------



SureFast® Bar Aluminium Flat	
------------------------------	--

SF-BAF-2000	ATB-F-2000
-------------	------------



SureFast® Bar Aluminium Lipped	Global Termination Bar
--------------------------------	------------------------

SF-BAL-2000	ATB-L-2000
-------------	------------



SureFast® Bar Steel Channel	
-----------------------------	--

SF-BSC-1950	STB-C-1950
-------------	------------



SureFast® Code	Global Code
----------------	-------------

SureFast® Anchor Drive Rivet	Global Masonry Anchors
------------------------------	------------------------

SF-ADR-4.8 x 22	MA-4.8 x 22
SF-ADR-6.0 x 20	MA-6.3 x 25
SF-ADR-6.0 x 30	MA-6.3 x 32
SF-ADR-6.0 x 40	MA-6.3 x 38
SF-ADR-6.0 x 50	MA-6.3 x 50
SF-ADR 6.0 x 65	MA-6.3 x 50

Aluminium Drive Rivets

SF-ADR-4.8 x 16	ADR-4.8 x 16
SF-ADR-4.8 x 20	ADR-4.8 x 20
SF-ADR-4.8 x 30	ADR-4.8 x 30
SF-ADR-4.8 x 50	ADR-4.8 x 50

SureFast® Plate Flat	Global Pressure Plates
----------------------	------------------------

SF-P-40-F	SP-40-F1
—	SP-50-F4
SF-P-70-F	SP-70-F2

SureFast® Plate Shallow	
-------------------------	--

—	SPB-50-S4
—	SP-8240-S1
SF-P-8240-S	SP-8240-S3

SureFast® Plate Dished	
------------------------	--

—	SP-70-D3
SF-P-70-D	SP-70-D4
SF-P-8240-D	SP-8240-D3

SureFast® Plate Stainless A4 Flat	
-----------------------------------	--

SF-P-SSA4-40-F	SP-SS-40-F1
----------------	-------------

SureFast® Plate Stainless Dished	
----------------------------------	--

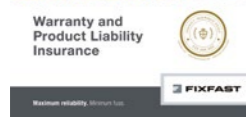
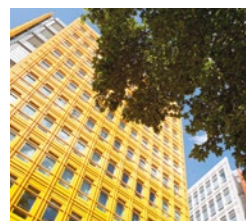
SF-P-SS-70-D	SP-SS-70-D4
--------------	-------------

“Very easy company to deal with - problems are rare”

If the product is installed in the prescribed way and it fails to perform its primary function, then we will fully replace our affected components and remediate any consequential damage to the building envelope caused by the failure.



Fixfast warranty



What does the Fixfast warranty cover?

As you would expect, when you purchase components from Fixfast you can be assured that, in the unlikely event of any product defect, you are covered by an industry-leading warranty.

We're covering the product to perform effectively for the life of that warranty – in other words against manufacturing defect causing breakdown, and consequentially the failure of the building envelope.

What is not included in the warranty cover?

The main things not covered are damage caused by accidents, poor workmanship or misuse. No damage resulting from any attachment, extension, modification, alteration, repair or maintenance work to the installation is covered. We would always advise that Fixfast are consulted at the specification stage to ensure that the correct products are selected.

How do I apply for warranty cover?

Simple. Just contact Fixfast and request an application form. Complete the application and return to our Technical team by email on tech@fixfast.com or by post. We will process the application and forward our certificate of warranty.

What insurance backing does Fixfast provide?

The Fixfast Product and Public Liability insurance being structured in a triple layer to provide the full cover of £20,000,000.00. (£20 Million), in addition to Professional Indemnity cover of £5,000,000 (£5 Million).

The insurance covers legal liability for legal costs and damages arising from:

1. Injury to third party persons,
2. Loss of or damage to third party property as a consequence of the supply/sale of products.

The Terms & Conditions of Warranty are available on request. The prescribed application of each product is set out in the relevant Technical Data Sheet, and is a condition of warranty.



FIXFAST

Merlin House
Seven Mile Lane
Borough Green
Sevenoaks
Kent TN15 8QY

Enquiries

0845 450 7483

Orderline

0500 553 222

International

+44 (0) 1732 882387

Fax

0845 450 7486

Email

info@fixfast.com

Website

www.fixfast.com



Certificate Number 10905

ISO 9001: 2008
ISO 14001: 2004
BS OHSAS 18001: 2007



Printed using
paper from well
managed forests