

Maximum reliability. Minimum fuss.



Selector Guide

TATA Trisomet

Tata

Fastener Systems and Sealing Products

Contents

| | |
|------------------------------------|----------------|
| Products for Specific Applications | 3 - 9 |
| Accessories | 10 |
| Technical Data | 11 - 12 |
| Technical Notes | 13 |

Introduction to Fixfast

Fixfast design, manufacture and supply specialist building fasteners and components for the walls and roofs of industrial, commercial and larger residential buildings. We collaborate with major building envelope system manufacturers, such as TATA, to provide them and their clients with engineered fastening and sealing solutions.

This selector guide has been created as an easy to use reference document, identifying the most common fasteners and components for use when installing the TATA Trisomet panel system.

Full technical data for these products along with application uses can be found on our website at www.fixfast.com by searching for the product.

Our specification team can assist in providing NBS specifications for specific projects, whilst our customer services team can answer questions regarding the usage or ordering of Fixfast products.

If you have any queries regarding our products or services then please do contact our customer services team on 0800 304 7616 or by emailing sales@fixfast.com.

Fixing TATA Trisomet to steel 1.2 - 3.0mm - roof application

Fixing Trisomet: Primary fixing - roof application to cold rolled steel.

Use Matchfast® fasteners.

11mm bi-hex head, use Fixfast MF1165.



| Panel Thickness | Fastener Code Stainless | Fastener Code Carbon |
|-----------------|-------------------------|----------------------|
| 40mm | MF3-SS-HT-A19-5.5 x 85 | MF3-HT-A19-5.5 x 65 |
| 60mm | MF3-SS-HT-A19-5.5 x 85 | MF3-HT-A19-5.5 x 85 |
| 80mm | MF3-SS-HT-A19-5.5 x 110 | MF3-HT-A19-5.5 x 105 |
| 100mm | MF3-SS-HT-A19-5.5 x 130 | MF3-HT-A19-5.5 x 130 |
| 120mm | MF3-SS-HT-A19-5.5 x 150 | MF3-HT-A19-5.5 x 150 |
| 135mm | MF3-SS-HT-A19-5.5 x 180 | MF3-HT-A19-5.5 x 180 |

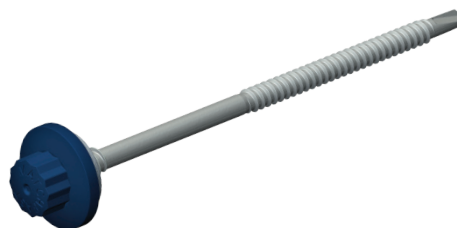
For fixing panels back to timber, please contact Fixfast Customer Service team on **0800 304 7616**

Fixing TATA Trisomet to steel 1.2 - 3.0mm - wall application

Fixing Trisomet: Primary fixing - wall application to cold rolled steel.

Use Matchfast® fasteners.

11mm bi-hex head, use Fixfast MF1165.



| Panel Thickness | Fastener Code Stainless | Fastener Code Carbon |
|-----------------|-------------------------|----------------------|
| 40mm | MF3-SS-HT-A19-5.5 x 85 | MF3-HT-A19-5.5 x 65 |
| 60mm | MF3-SS-HT-A19-5.5 x 85 | MF3-HT-A19-5.5 x 85 |
| 80mm | MF3-SS-HT-A19-5.5 x 110 | MF3-HT-A19-5.5 x 105 |
| 100mm | MF3-SS-HT-A19-5.5 x 130 | MF3-HT-A19-5.5 x 130 |
| 120mm | MF3-SS-HT-A19-5.5 x 150 | MF3-HT-A19-5.5 x 150 |
| 135mm | MF3-SS-HT-A19-5.5 x 180 | MF3-HT-A19-5.5 x 180 |

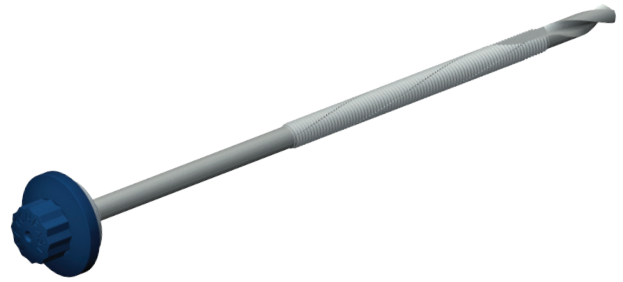
For fixing panels back to timber, please contact Fixfast Customer Service team on **0800 304 7616**

Fixing TATA Trisomet to steel 4.0 - 12.0mm - roof application

Fixing Trisomet: Primary fixing - roof application to hot rolled steel.

Use MatchFast® fasteners.

11mm bi-hex head, use Fixfast MF1165.



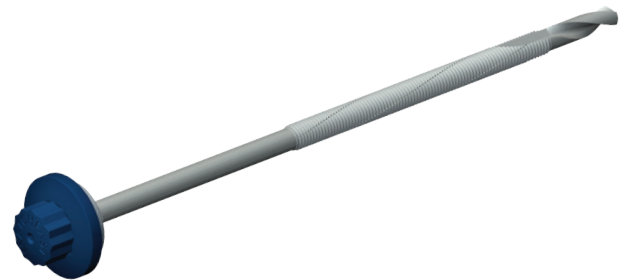
| Panel Thickness | Fastener Code - Stainless | Fastener Code - carbon |
|-----------------|---------------------------|------------------------|
| 40mm | MF12-SS-HT-A19-5.5 x 95 | MF12-HT-A19-5.5 x 85 |
| 60mm | MF12-SS-HT-A19-5.5 x 115 | MF12-HT-A19-5.5 x 105 |
| 80mm | MF12-SS-HT-A19-5.5 x 150 | MF12-HT-A19-5.5 x 125 |
| 100mm | MF12-SS-HT-A19-5.5 x 150 | MF12-HT-A19-5.5 x 145 |
| 120mm | MF12-SS-HT-A19-5.5 x 200 | MF12-HT-A19-5.5 x 165 |
| 135mm | MF12-SS-HT-A19-5.5 x 200 | MF12-HT-A19-5.5 x 185 |

Fixing TATA Trisomet to steel 4.0 - 12.0mm - wall application

Fixing Trisomet: Primary fixing - wall application to hot rolled steel.

Use MatchFast® fasteners.

11mm bi-hex head, use Fixfast MF1165.



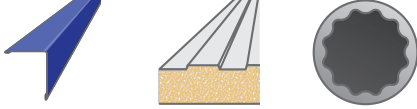
| Panel Thickness | Fastener Code - Stainless | Fastener Code - carbon |
|-----------------|---------------------------|------------------------|
| 40mm | MF12-SS-HT-A19-5.5 x 95 | MF12-HT-A19-5.5 x 85 |
| 60mm | MF12-SS-HT-A19-5.5 x 115 | MF12-HT-A19-5.5 x 105 |
| 80mm | MF12-SS-HT-A19-5.5 x 150 | MF12-HT-A19-5.5 x 125 |
| 100mm | MF12-SS-HT-A19-5.5 x 150 | MF12-HT-A19-5.5 x 145 |
| 120mm | MF12-SS-HT-A19-5.5 x 200 | MF12-HT-A19-5.5 x 165 |
| 135mm | MF12-SS-HT-A19-5.5 x 200 | MF12-HT-A19-5.5 x 185 |

TATA Trisomet side lap stitcher

Fixing Trisomet: side lap stitcher

Use MatchFast® stitching fastener with bonded washer.

11mm bi-hex head, use Fixfast MF1165.



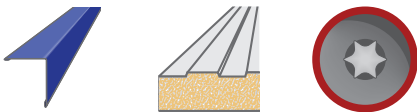
| Fastener Code Stainless | Fastener Code Carbon |
|------------------------------|---------------------------|
| MF2-SS-A15-6.3 x 25 + colour | MF2-A15-6.3 x 25 + colour |

TATA Trisomet flashing stitcher

Fixing Trisomet: Metal flashings to panel

Use DrillFast® Lacquered stitching fastener with bonded washer.

Pan TX25 head, use Fixfast RedDrive.



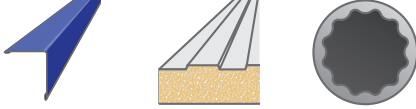
| Fastener Code Stainless | Fastener Code Carbon |
|------------------------------------|-------------------------------|
| DF2-SS-A4-PL-S15-6.3 x 25 + colour | DF3-DPL-A15-6.3 x 25 + colour |

TATA Trisomet flashing stitcher

Fixing Trisomet: Metal flashings to panel

Use MatchFast® stitching fastener with bonded washer.

11mm bi-hex head, use Fixfast MF1165.



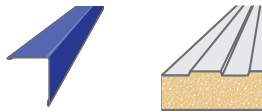
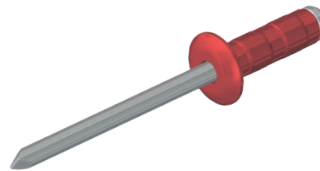
| Fastener Code Stainless | Fastener Code Carbon |
|------------------------------|---------------------------|
| MF2-SS-A15-6.3 x 25 + colour | MF2-A15-6.3 x 25 + colour |

TATA Trisomet flashing rivet - stainless steel

Fixing Trisomet: Metal flashings to panel

Use stainless steel lacquered rivet.

Use powered riveting tool.



| Fastener Code - stainless | Fastener code - aluminium |
|----------------------------|----------------------------|
| R-SS-LAC-4.8 x 15 + colour | R-AC-LAC-4.8 x 15 + colour |

TATA Trisomet sealants

Sealant for end and side laps.

Use A Class butyl strip sealant.



| Sealant Code | Thickness x width (mm) | Roll length (mm) |
|---------------|------------------------|------------------|
| A-5 x 6 x 9.6 | 5 x 6 | 9.6 |

TATA Trisomet sealants

Sealant for end laps in vertical wall applications.

Use A Class butyl strip sealant.



| Sealant Code | Thickness x width (mm) | Roll length (mm) |
|--------------|------------------------|------------------|
| A-4 dia x 12 | 5 x 6 | 9.6 |

TATA Trisomet sealants

Sealant for side laps.

Use A Class butyl strip sealant.



| Sealant Code | Thickness x width (mm) | Roll length (mm) |
|--------------|------------------------|------------------|
| A-4 dia x 12 | 5 x 6 | 9.6 |

TATA Trisomet Sealants

Bedding sealant for filler blocks at ridges and hips.

Use Seelex BR gun grade butyl rubber bedding sealant.



| Sealant Code | Cartridge size (ml) | Colour |
|--------------|---------------------|---------------|
| SEELEX-BR | 380 | grey or white |

TATA Trisomet Sealants

Gun grade sealant for end laps in horizontal wall applications.

Use Seelex LM.



| Sealant Code | Cartridge size (ml) | Colour |
|--------------|---------------------|---------|
| SEELEX-LM | 310 | various |

TATA Trisomet sealants

Use Firefoam B1.

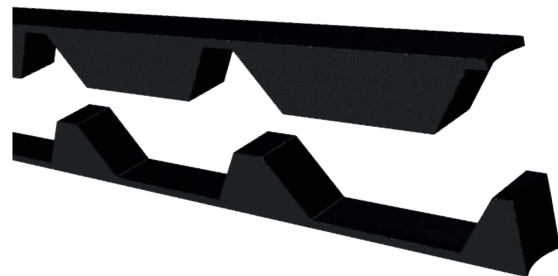


| Sealant Code | Cartridge Size (ml) | Fitting |
|------------------|---------------------|----------|
| FIREFOAM-B1-GUN | 750 | Screwtop |
| FIREFOAM-B1-HAND | 750 | Manual |

TATA Trisomet Filler Blocks

EPDM foam filler blocks for ridges and hips.
Use EPDM foam fillers.

Also available in fire resistant material.
Please enquire for details.



Filler Code

E-25 TATA Trisomet

MF1165 Drive

One-piece drive socket for 11mm bi-hex-head stainless steel fasteners.

Product Code: MF1165



RedDrive

One-piece drive socket for DrillFast® low profile fasteners, supports the head for easy accurate driving.

Product Code: REDDRIVE



Many other tools and accessories are available.

Please see the current Fixfast Product Directory, go to www.fixfast.com, or ask the Fixfast customer service team.

MF3-SS-HT-5.5 Range

| Material | 1.4301 stainless steel (304M), with steel case hardened welded point and UV-stabilised nylon moulded head |
|---|---|
| Coating | Organic |
| Drilling Capacity | 1.2mm - 3.0mm steel |
| Pull-out Values (axial load resistance) | |
| Substrate | Characteristic value |
| 1.2mm Steel | 1.30kN |
| 2.0mm Steel | 2.62kN |
| 3.0mm Steel | 4.76kN |
| Softwood 35mm Embedment | 3.57kN |

MF3-HT-5.5 Range

| Material | Steel SAE1022 case hardened with UV-stabilised nylon moulded head |
|---|---|
| Coating | Organic |
| Drilling Capacity | 1.2mm - 3.0mm steel |
| Pull-out Values (axial load resistance) | |
| Substrate | Characteristic value |
| 1.2mm Steel | 1.52kN |
| 2.0mm Steel | 3.01kN |
| 3.0mm Steel | 5.42kN |
| Softwood 35mm Embedment | 3.57kN |

MF12-SS-HT-5.5 Range

| Material | 1.4301 Stainless steel (304M), with steel case hardened welded point, with UV-stabilised nylon moulded head |
|---|---|
| Coating | Organic |
| Drilling Capacity | 4.0mm - 12.0mm steel |
| Pull-out Values (axial load resistance) | |
| Substrate | Characteristic value |
| 4.0mm Steel | 2.08kN |
| 6.0mm Steel | 3.09kN |
| 8.0mm Steel | 6.89kN |
| 12.0mm Steel | 6.89kN |

Technical Data

| MF12-HT-5.5 Range | |
|---|--|
| Material | SAE1022 steel case hardened, with UV-stabilised nylon moulded head |
| Coating | Organic |
| Drilling Capacity | 4.0mm - 12.0mm steel |
| Pull-out Values (axial load resistance) | |
| Substrate | Characteristic value |
| 4.0mm Steel | 5.44kN |
| 6.0mm Steel | 12.75kN |
| 8.0mm Steel | 13.92kN |
| 12.0mm Steel | 13.92kN |

| DF2-SSA4-PL-6.3 x 25 | |
|---|--|
| Material | 1.4401 stainless steel (316M), with steel case hardened welded point |
| Coating | Organic |
| Drilling Capacity | 2 sheets 1.0mm thick |
| Pull-out Values (axial load resistance) | |
| Substrate | Characteristic value |
| 0.5mm Steel | 0.60 kN |

| MF2-SS-6.3 x 25 | |
|---|--|
| Material | 1.4301 stainless steel (304M), with carbon steel case hardened welded point and UV-stabilised nylon moulded head |
| Coating | Organic |
| Drilling Capacity | 2 sheets 1.0mm thick |
| Pull-out Values (axial load resistance) | |
| Substrate | Characteristic value |
| 0.5mm Steel | 0.60 kN |

| R-SS-LAC-4.8 x 15 | |
|---------------------------|------------------------|
| Nominal rivet length (mm) | 17.3 |
| Body diameter (mm) | 48 |
| Drill hole diameter (mm) | 4.9 |
| Head diameter (mm) | 9.8 |
| Mandrel diameter (mm) | 3.2 |
| Grip range (mm) | 6.0 - 8.5 |
| Material | A2 304 stainless steel |

Fastener Data

- + All dimensions are subject to manufacturing tolerances.
- + Performance values are tested and calculated according to Eurocode procedures and appropriate safety factors should be applied in any calculations using these values.

Fastener Selection

- + Recommended fastener lengths are calculated using standard tolerances for the fasteners and the combination of materials in the build-up.
- + If there is distortion in the supporting construction, or other non-standard application detail, longer fasteners may be necessary than those shown. Always check the actual circumstances before deciding on a particular length.

Further Assistance

- + For any enquiry, or to discuss your requirements with someone knowledgeable, call the Fixfast customer service team on **0800 304 7616**.
- + Full literature is available for the Fixfast range, or visit **www.fixfast.com**
- + Other performance data may be available on request. For more unusual applications, tests can be carried out in our in-house technical centre to provide the necessary data.
- + Site visits are also possible, particularly for pull-out performance into concrete, masonry or other variable substrates. Please ask for a Site Visit Request form if you think this service would be useful.
- + CAD files of fasteners are available on request for inclusion in drawings.

The information contained in this document is based on the specification of the TATA Trisomet system and Fixfast's product data. It is provided in good faith but Fixfast cannot be held liable for any errors. Performance is dependent on adherence to the conditions and instructions contained in Fixfast's Technical Data Sheets for the products shown. Performance values should be approved by a qualified engineer, and Fixfast recommend preliminary tests for any application where variation is possible in the materials or substrates involved.



Merlin House
Seven Mile Lane
Borough Green
Sevenoaks
Kent
TN15 8QY

Enquiries

0800 304 7616

International

+44 (0) 1732 882387

Fax

0845 450 7486

Email

info@fixfast.com



Certificate number 10905
ISO 9001, ISO 14001
OHSAS 18001

