

MATERIAL CHARACTERISTICS

| | |
|--|--|
| POLYMER CONCRETE | on a Polyester resin basis, with mineral fillers, additives |
| COMPRESSIVE STRENGTH | ≥ 90 N/mm ² |
| BENDING STRENGTH | ≥ 22 N/mm ² |
| ELASTICITY MODULE | 25,000 – 35,000 N/mm ² |
| DENSITY | 2,1 – 2,3 kg/dm ³ |
| COEFFICIENT OF LINEAR EXPANSION | Approx. 1.45 x 10 ⁻⁵ 1/K |
| HEAT RESISTANCE | 100°C continuous load, up to 200°C with a load duration up to 5 min. |
| FROST RESISTANCE | - 50 °C |
| WATER ABSORPTION | < 0.05% DIN 52 103 (A) |

PURPOSE OF USE

Component for the line drainage of surfaces in order to collect, transport and discharge rain water from adjacent fixed surfaces.

DESIGN

- / Length 500 and 1000 mm
- / Length 1000 mm / A including formed-in drain socket
- / Fixed sizes 280, 330 and 380 mm
- / Flat channel with constructive height 100 mm

ACCESSORIES

- / Sediment bucket for pipe connection Ø 160 / 200mm
- / End cap closed for flat channel
- / End cap closed, height adjustable for all constructive heights 280 – 380mm
- / End cap with connection piece Ø 160mm, fixed for constructive heights 280mm, 330mm, 380mm

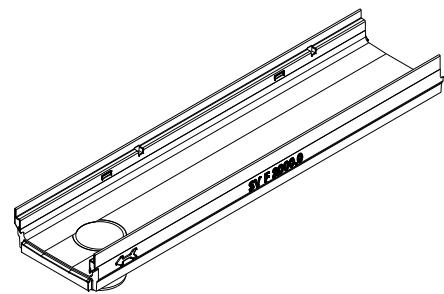
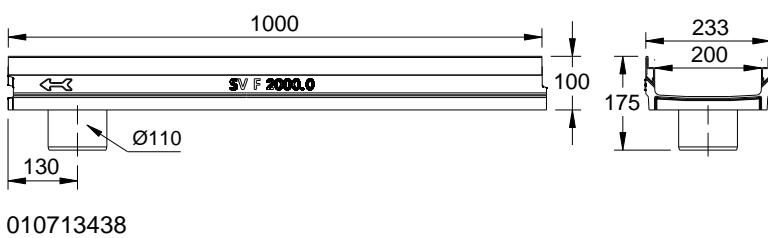
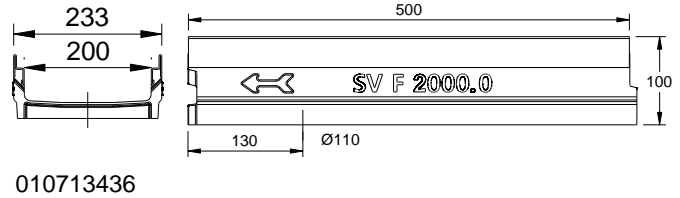
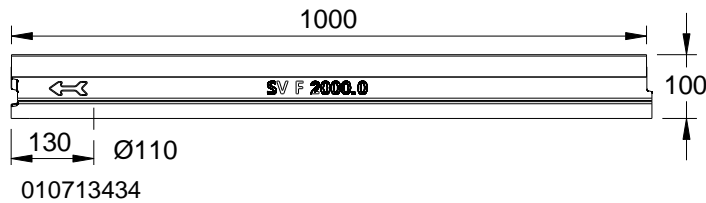
EDGE PROTECTION

- / strip galvanized steel, stainless steel V2A
- / Edge thickness 4mm

** Not suitable for the diagonal or transverse travel of motorways and highways

MEADRAIN SVF 2000 FLAT POLYMER CONCRETE CHANNEL WITH SEALING JOINT

Clear width of the channel body 200 mm, total width 233 mm. Suitable for the all channel covers MEA 200 CLIPFIX with longitudinal shift protection and MEA TSH 200 TOPSLOT, for the realization of water level slopes. Loading class A 15 to E 600**



MEADRAIN SVF 2000 DRAINAGE CHANNEL BODY, LOADING CLASS E 600 ACCORDING TO EN 1433**

| Description | Order No. | Length [mm] | Constructive height [mm] | kg/unit |
|---|-----------|-------------|--------------------------|---------|
| MEADRAIN SVF 2000.0/100 Drainage channel body ¹⁾ | 010713434 | 1000 | 100 | 18,80 |
| MEADRAIN SVF 2000.0 A/100 Drainage channel with tight formed-in flanged drain socket Ø 110 mm ⁸⁾ | 010713438 | 1000 | 100 | 18,80 |
| MEADRAIN SVF 2000.1/100 Drainage channel body ¹⁾ | 010713436 | 500 | 100 | 10,00 |

** Not suitable for the diagonal or transverse travel of motorways and highways

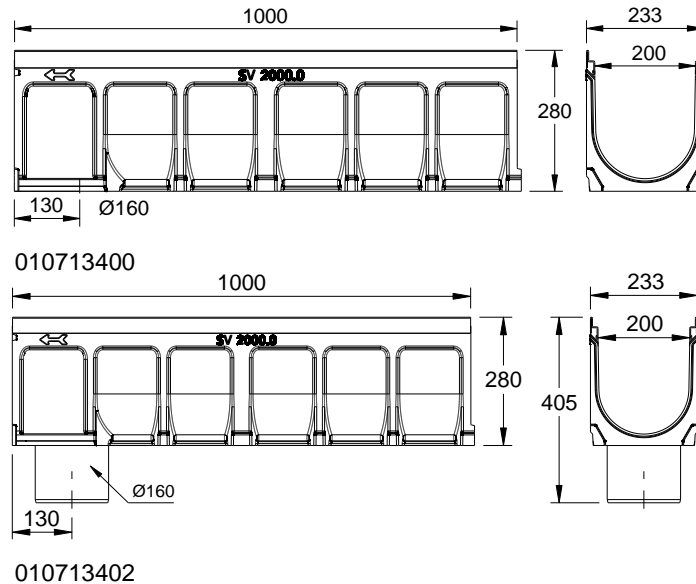
1) Connection option for vertical drain Ø 110 mm

8) With tight formed-in drain socket \varnothing 110 mm

MEADRAIN SV 2000 POLYMER CONCRETE CHANNEL

WITH 4 MM EDGE PROTECTION MADE OF GALVANISED STEEL, SEALING JOINT ACCORDING TO EN 1433

Clear width of the channel body 200 mm, total width 233 mm. Suitable for the all channel covers MEA 200 CLIPFIX with longitudinal shift protection and MEA TSH 200 TOPSLOT, for the realization of water level slopes. Loading class A 15 to E 600**



MEADRAIN SV 2000 RINNENKORPER OHNE GEFÄLLE, BELASTUNGSKLASSE E 600
GEMÄß DIN EN 1433**

| Description | Order No. | Length [mm] | Constructive height [mm] | kg/unit |
|--|-----------|-------------|--------------------------|---------|
| MEADRAIN SV 2000.0 Drainage channel body ⁵⁾ | 010713400 | 1000 | 280 | 32,10 |
| MEADRAIN SV 2000.0/A Drainage channel with tight formed-in flanged drain socket \varnothing 160 mm ⁹⁾ | 010713402 | 1000 | 280 | 32,60 |
| MEADRAIN SV 2000.1 Drainage channel body ^{5) 14)} | 010713442 | 500 | 280 | 16,30 |
| MEADRAIN SV 2010.0 Drainage channel body ⁵⁾ | 010713404 | 1000 | 330 | 36,23 |
| MEADRAIN SV 2010.0/A Drainage channel with tight formed-in flanged drain socket \varnothing 160 mm ⁹⁾ | 010713406 | 1000 | 330 | 36,20 |
| MEADRAIN SV 2010.1 Drainage channel body ^{5) 14)} | 010713405 | 500 | 330 | 16,50 |
| MEADRAIN SV 2020.0 Drainage channel body ⁵⁾ | 010713408 | 1000 | 380 | 39,50 |
| MEADRAIN SV 2020.0/A Drainage channel with tight formed-in flanged drain socket \varnothing 160 mm ⁹⁾ | 010713410 | 1000 | 380 | 40,00 |
| MEADRAIN SV 2020.1 Drainage channel body ^{5) 14)} | 010713407 | 500 | 380 | 16,90 |

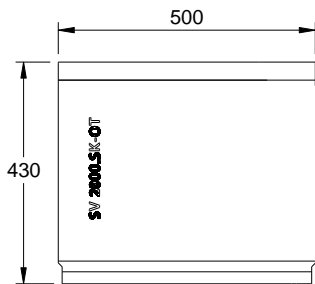
** Not suitable for the diagonal or transverse travel of motorways and highways

5) Connection option for vertical drain \varnothing 160 mm (drainage deformation) or to a gully

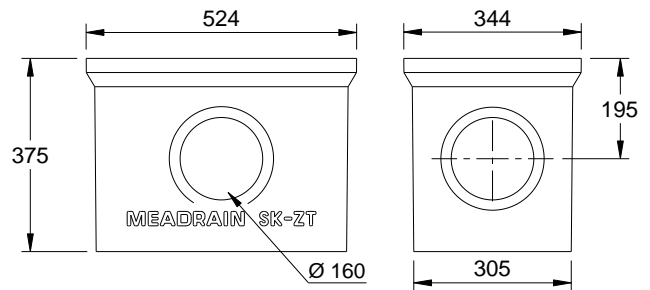
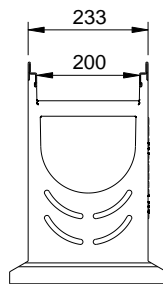
9) Channel elements with tight formed-in drain socket \varnothing 160 mm

14) Connection option for corner, t and cross connections

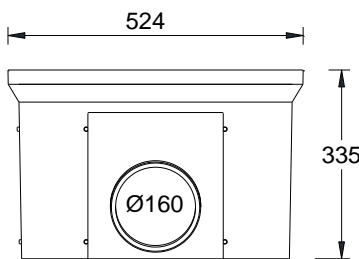
MEADRAIN SV AND SVF 2000 DRAINAGE CHANNEL ACCESSORIES



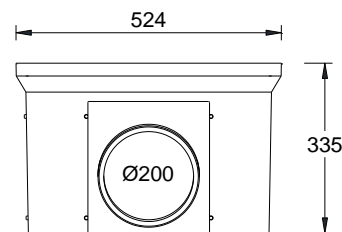
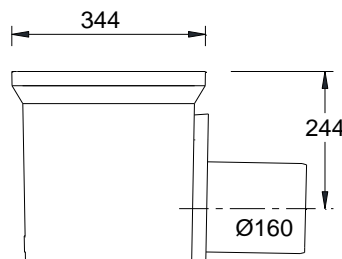
010713414



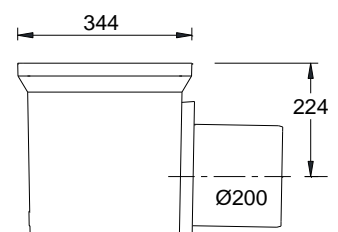
010154709



010154726



010154728

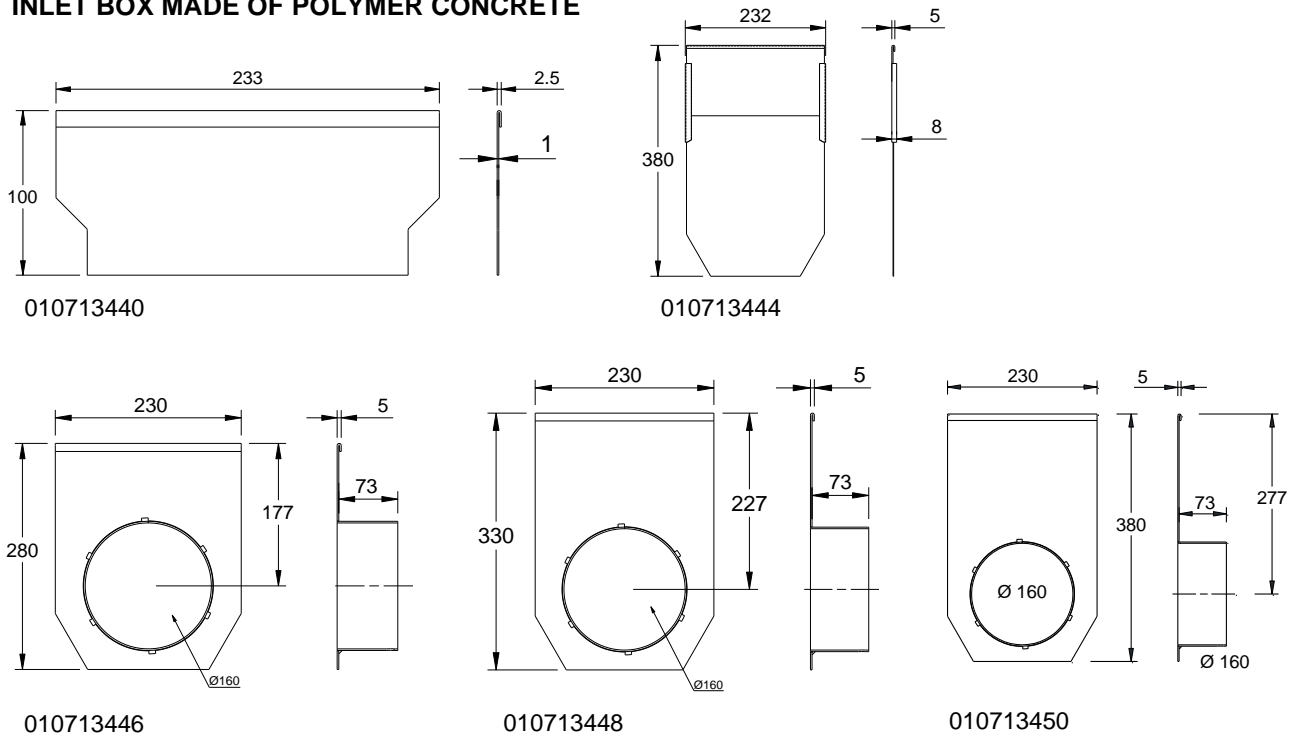


MEADRAIN SV 2000 SINKKASTEN

| Description | Order No. | Length [mm] | Constructive height [mm] | kg/unit |
|--|-----------|-------------|--------------------------|---------|
| MEADRAIN SV 2000.SK-OT Gully-top opened on both sides for 280 mm constructive height | 010713414 | 500 | 430 | 23,90 |
| MEA SK-ZT gully intermediate part made of polymer concrete for a height extension | 010154709 | 524 | 375 | 22,00 |
| MEA SK-UT short Gully lower part, with integrated drain socket Ø 160 mm | 010154726 | 524 | 335 | 25,16 |
| MEA SK-UT short Gully lower part, with integrated drain socket Ø 200 mm | 010154728 | 524 | 335 | 27,00 |
| MEADRAIN 2000 Sediment bucket for gully | 010154717 | 500 | 430 | 3,50 |

** Not suitable for the diagonal or transverse travel of motorways and highways.

INLET BOX MADE OF POLYMER CONCRETE



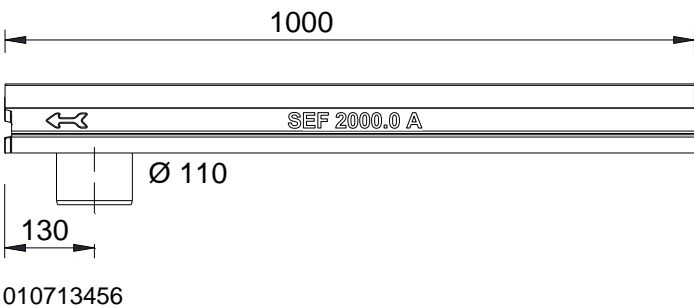
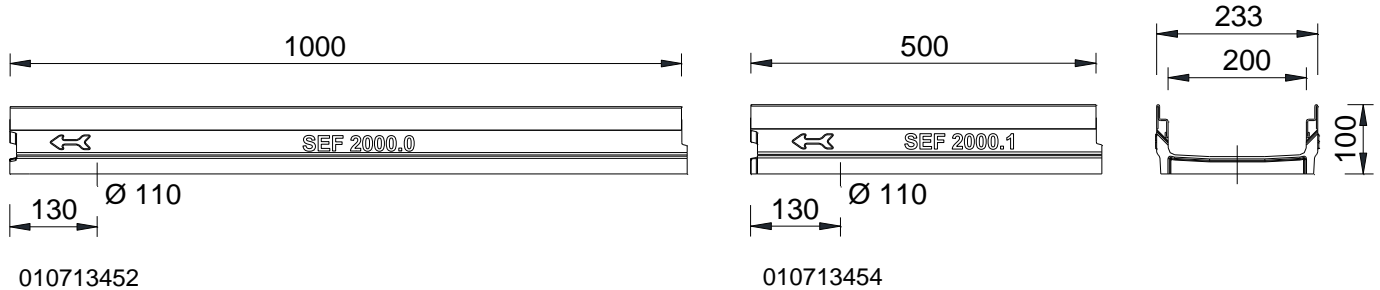
INLET BOX MADE OF POLYMER CONCRETE

| Description | Order No. | Material | kg/unit |
|--|-----------|-------------|---------|
| MEADRAIN SVF 2000.SE END CAP CLOSED FOR FLAT CHANNEL FOR CHANNEL START/ END | 010713440 | Galv. steel | 0,20 |
| MEADRAIN SV/SG 2000-20.SE END CAP CLOSED FOR CHANNEL START/ END, HEIGHT-ADJUSTABLE | 010713444 | Galv. steel | 0,80 |
| MEADRAIN SV/SG 2000.E END CAP WITH CONNECTOR $\varnothing 160$ MM, FOR CHANNEL END, FIXED HEIGHT | 010713446 | Galv. steel | 1,30 |
| MEADRAIN SV/SG 2010.E END CAP WITH CONNECTOR $\varnothing 160$ MM, FOR CHANNEL END FIXED HEIGHT | 010713448 | Galv. steel | 1,50 |
| MEADRAIN SV/SG 2020.E END CAP WITH CONNECTOR $\varnothing 160$ MM, FOR CHANNEL END, FIXED HEIGHT | 010713450 | Galv. steel | 1,60 |

** Nicht zur Querentwässerung von Schnellstraßen und Autobahnen geeignet.

MEADRAIN SEF 2000 FLAT POLYMER CONCRETE DRAINAGE CHANNEL WITH SEALING JOINT

Clear width of the channel body 200 mm, total width 233 mm. Suitable for the all channel covers MEA 200 CLIPFIX with longitudinal shift protection and MEA TSH 200 TOPSLOT, for the realization of water level slopes. Loading class A 15 to E 600**



MEADRAIN SEF 2000 DRAINAGE CHANNEL BODY, LOADING CLASS E 600 ACCORDING TO EN 1433**

| Description | Order No. | Length [mm] | Constructive height [mm] | kg/unit |
|--|-----------|-------------|--------------------------|---------|
| MEADRAIN SEF 2000.0/100 Drainage channel body ¹⁾ | 010713452 | 1000 | 100 | 19,89 |
| MEADRAIN SEF 2000.0 A/100 Drainage channel with tight formed-in flanged drain socket Ø110 mm ⁸⁾ | 010713456 | 1000 | 100 | 18,80 |
| MEADRAIN SEF2000.1/100 Drainage channel body ¹⁾ | 010713454 | 500 | 100 | 10,00 |

** Not suitable for the diagonal or transverse travel of motorways and highways

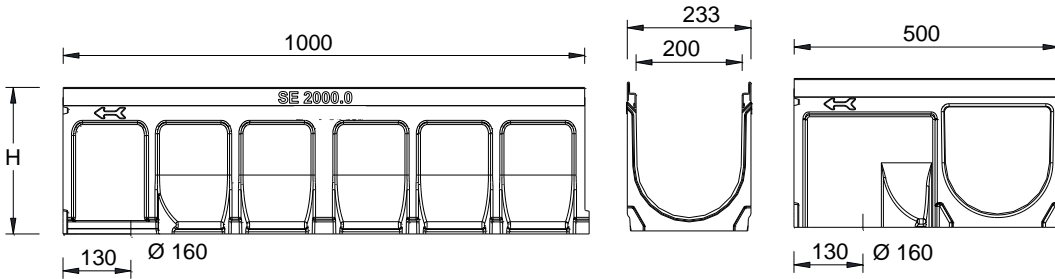
1) Connection option for vertical drain Ø 110 mm

8) With tight formed-in drain socket Ø 110 mm

MEADRAIN SE 2000 POLYMER CONCRETE DRAINAGE CHANNEL

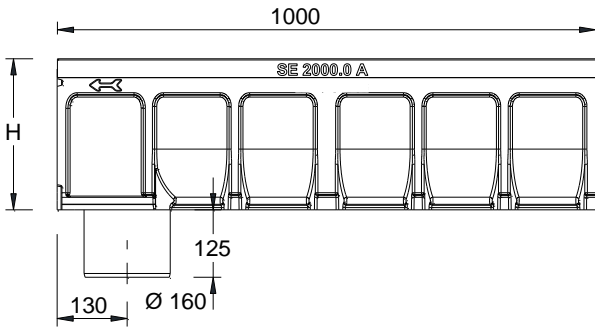
WITH 4 MM EDGE PROTECTION MADE OF STAINLESS STEEL, SEALING JOINT ACCORDING TO EN 1433

Clear width of the channel body 200 mm, total width 233 mm. Suitable for the all channel covers MEA 200 CLIPFIX with longitudinal shift protection and MEA TSH 200 TOPSLOT, for the realization of water level slopes. Loading class A 15 to E 600**



010713460

010713464



010713468

MEADRAIN SE 2000 DRAINAGE CHANNEL BODY, LOADING CLASS E 600 ACCORDING TO EN 1433**

| Description | Order No. | Length [mm] | Constructive height [mm] | kg/unit |
|--|-----------|-------------|--------------------------|---------|
| MEADRAIN SE 2000.0 Drainage channel body ⁵⁾ | 010713460 | 1000 | 280 | 32,10 |
| MEADRAIN SE 2000.0/A Drainage channel with tight formed-in flanged drain socket Ø 160 mm ⁹⁾ | 010713462 | 1000 | 280 | 32,60 |
| MEADRAIN SE 2000.1 Drainage channel body ^{5) 14)} | 010713464 | 500 | 280 | 16,30 |
| MEADRAIN SE 2010.0 Drainage channel body ⁵⁾ | 010713466 | 1000 | 330 | 35,70 |
| MEADRAIN SE 2010.0/A Drainage channel with tight formed-in flanged drain socket Ø 160 mm ⁹⁾ | 010713468 | 1000 | 330 | 36,20 |
| MEADRAIN SE 2010.1 Drainage channel body ^{5) 14)} | 010713467 | 500 | 330 | 16,50 |
| MEADRAIN SE 2020.0 Drainage channel body ⁵⁾ | 010713470 | 1000 | 380 | 39,50 |
| MEADRAIN SE 2020.0/A Drainage channel with tight formed-in flanged drain socket Ø 160 mm ⁹⁾ | 010713472 | 1000 | 380 | 40,00 |
| MEADRAIN SE 2020.1 Drainage channel body ^{5) 14)} | 010713471 | 500 | 380 | 16,90 |

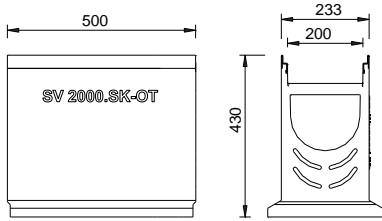
** Not suitable for the diagonal or transverse travel of motorways and highways

5) Connection option for vertical drain Ø 160 mm (drainage deformation) or to a gully

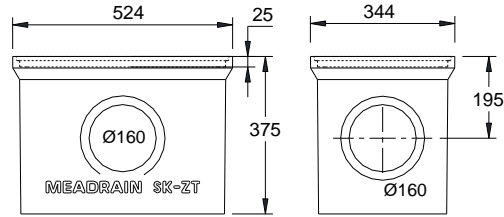
9) Channel elements with tight formed-in drain socket Ø 160 mm

14) Connection option for corner, t and cross connections

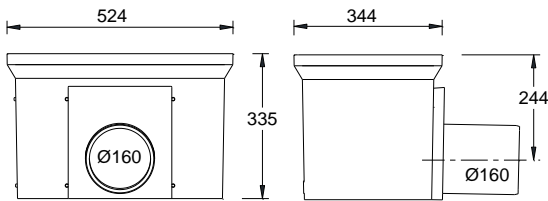
MEADRAIN SE AND SEF 2000 DRAINAGE CHANNEL ACCESSORIES



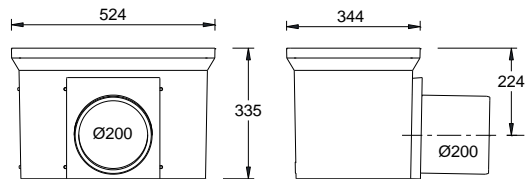
010713474



010154709



010154726



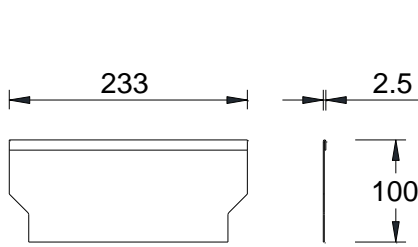
010154728

MEADRAIN SEF/SE 2000 GULLY

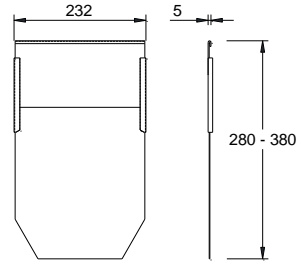
| Description | Order No. | Length [mm] | Constructive height [mm] | kg/unit |
|--|-----------|-------------|--------------------------|---------|
| MEADRAIN SE 2000.SK-OT Gully-top opened on both sides for constructive height 280 mm | 010713474 | 500 | 430 | 23,90 |
| MEA SK-ZT gully intermediate part made of polymer concrete for a height extension | 010154709 | 524 | 375 | 22,00 |
| MEA SK-UT short Gully lower part, with integrated drain socket Ø 160 mm | 010154726 | 524 | 335 | 25,16 |
| MEA SK-UT short Gully lower part, with integrated drain socket Ø 200 mm | 010154728 | 524 | 335 | 27,00 |
| MEADRAIN 2000 Sediment bucket for gully | 010154717 | - | - | 3,50 |

** Not suitable for the diagonal or transverse travel of motorways and highways

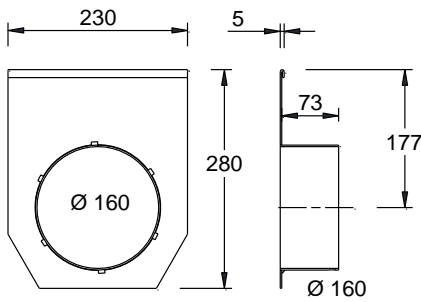
MEADRAIN SE AND SEF 2000 DRAINAGE CHANNEL ACCESSORIES



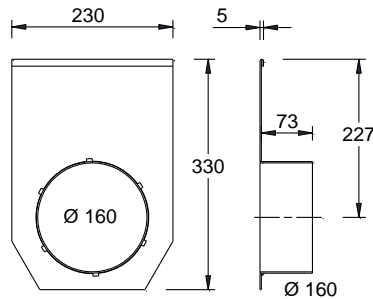
010713458



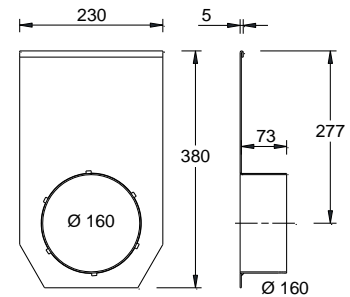
010713476



010713478



010713480



010713482

MEADRAIN SEF 2000 END CAPS

| Description | Order No. | Material | kg/unit |
|---|-----------|---------------|---------|
| MEADRAIN SEF 2000.SE end cap closed for flat channel for channel start/ end | 010713458 | Stainl. steel | 0,02 |
| MEADRAIN SE 2000-20.SE End cap closed for channel start/ end, height-adjustable | 010713476 | Stainl. steel | 0,80 |
| MEADRAIN SE 2000.E End cap with connector Ø 160 mm, for channel end, fixed height | 010713478 | Stainl. steel | 1,30 |
| MEADRAIN SE 2010.E End cap with connector Ø 160 mm, for channel end, fixed height | 010713480 | Stainl. steel | 1,50 |
| MEADRAIN SE 2020.E End cap with connector Ø 160 mm, for channel end, fixed height | 010713482 | Stainl. steel | 1,60 |

** Not suitable for the diagonal or transverse travel of motorways and highways

MEADRAIN SV / SE / SG and SVF / SEF / SGF 2000

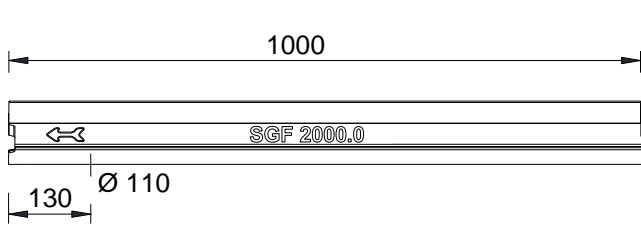
A15, B125, C250, D400**, E600**

nominal width 200 200

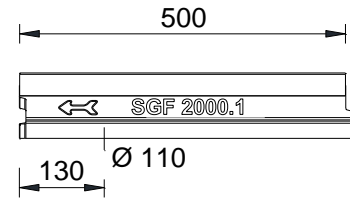
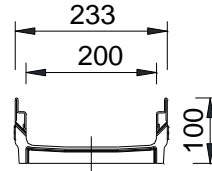
MEADRAIN SGF 2000 FLAT POLYMER CONCRETE DRAINAGE CHANNEL

WITH 4 MM EDGE PROTECTION MADE OF DUCTILE IRON, SEALING JOINT ACCORDING TO EN 1433

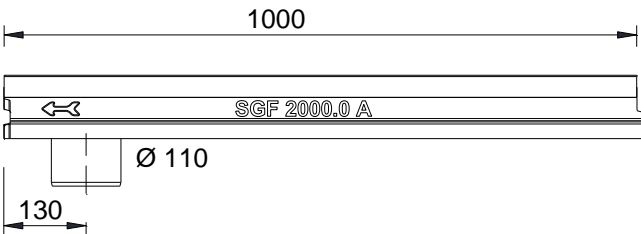
Clear width of the channel body 200 mm, total width 233 mm. Suitable for the all channel covers MEA 200 CLIPFIX with longitudinal shift protection and MEA TSH 200 TOPSLOT, for the realization of water level slopes. Loading class A 15 to E 600**



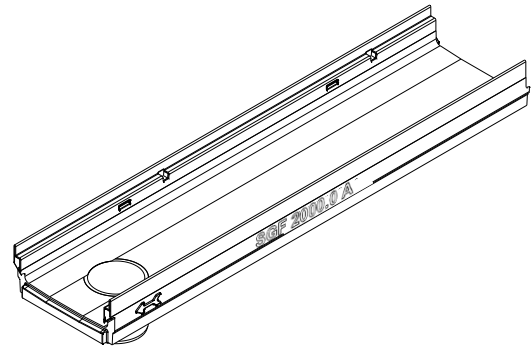
010713720



010713722



010713724



MEADRAIN SGF 2000 DRAINAGE CHANNEL BODY, LOADING CLASS E 600** ACCORDING TO EN 1433

| Description | Order No. | Length [mm] | Constructive height [mm] | kg/unit |
|---|-----------|-------------|--------------------------|---------|
| MEADRAIN SGF 2000.0/100 Drainage channel body ¹⁾ | 010713720 | 1000 | 100 | 18,80 |
| MEADRAIN SGF 2000.0 A/100 Drainage channel with tight formed-in flanged drain socket Ø 110 mm ⁸⁾ | 010713724 | 1000 | 100 | 18,80 |
| MEADRAIN SGF 2000.1/100 Drainage channel body ¹⁾ | 010713722 | 500 | 100 | 10,00 |

** Not suitable for the diagonal or transverse travel of motorways and highways

1) Connection option for vertical drain Ø 110 mm

8) With tight formed-in drain socket Ø 110 mm

MEADRAIN SV / SE / SG and SVF / SEF / SGF 2000

A15, B125, C250, D400**, E600**

nominal width 200 200

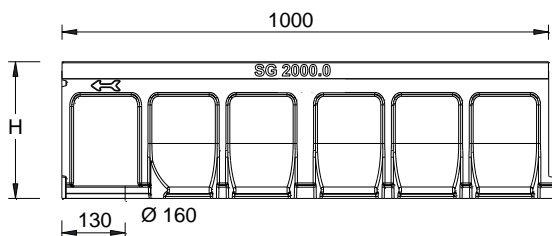


BUILDING SUCCESS

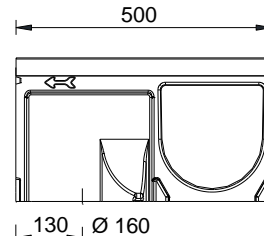
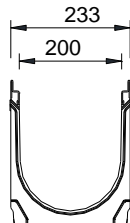
MEADRAIN SG 2000 POLYMER CONCRETE DRAINAGE CHANNEL

WITH 4 MM EDGE PROTECTION MADE OF DUCTILE IRON, SEALING JOINT ACCORDING TO EN 1433

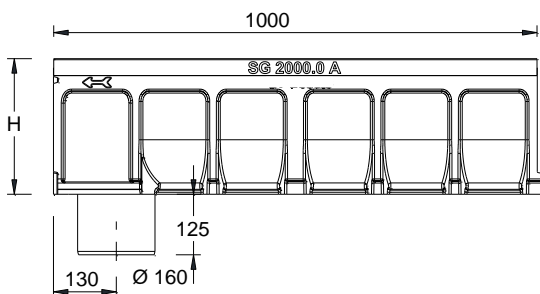
Clear width of the channel body 200 mm, total width 233 mm. Suitable for the all channel covers MEA 200 CLIPFIX with longitudinal shift protection and MEA TSH 200 TOPSLOT, for the realization of water level slopes. Loading class A 15 to E 600**



01013726



010713730



010713728

MEADRAIN SG 2000 DRAINAGE CHANNEL BODY, LOADING CLASS E 600** ACCORDING TO EN 1433

| Description | Order No. | Length [mm] | Constructive height [mm] | kg/unit |
|--|-----------|-------------|--------------------------|---------|
| MEADRAIN SG 2000.0 Drainage channel body ⁵⁾ | 010713726 | 1000 | 280 | 32,10 |
| MEADRAIN SG 2000.0/A Drainage channel with tight formed-in flanged drain socket Ø 160 mm ⁹⁾ | 010713728 | 1000 | 280 | 32,60 |
| MEADRAIN SG 2000.1 Drainage channel body ^{5) 14)} | 010713730 | 500 | 280 | 16,30 |
| MEADRAIN SG 2010.0 Drainage channel body ⁵⁾ | 010713732 | 1000 | 330 | 35,70 |
| MEADRAIN SG 2010.0/A Drainage channel with tight formed-in flanged drain socket Ø 160 mm ⁹⁾ | 010713734 | 1000 | 330 | 36,20 |
| MEADRAIN SG 2010.1 Drainage channel body ^{5) 14)} | 010713736 | 500 | 330 | 16,50 |
| MEADRAIN SG 2020.0 Drainage channel body ⁵⁾ | 010713738 | 1000 | 380 | 39,50 |
| MEADRAIN SG 2020.0/A Drainage channel with tight formed-in flanged drain socket Ø 160 mm ⁹⁾ | 010713740 | 1000 | 380 | 40,00 |
| MEADRAIN SG 2020.1 Drainage channel body ^{5) 14)} | 010713742 | 500 | 380 | 16,90 |

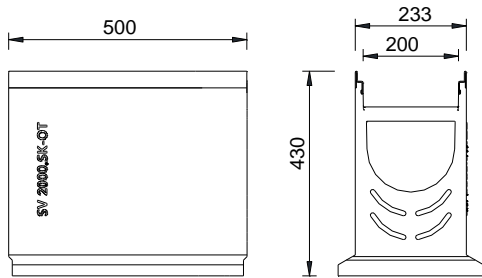
** Not suitable for the diagonal or transverse travel of motorways and highways

5) Connection option for vertical drain Ø 160 mm (drainage deformation) or to a gully

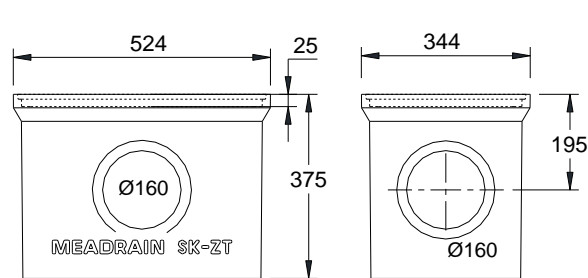
9) Channel elements with tight formed-in drain socket Ø 160 mm

14) Connection option for corner, T and cross connections

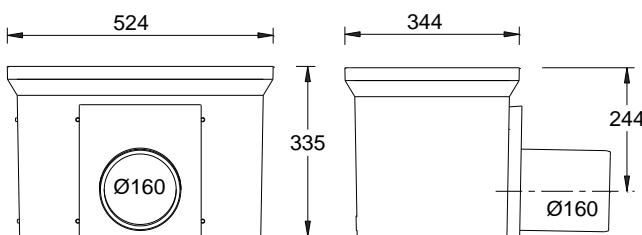
MEADRAIN SG AND SGF 2000 DRAINAGE CHANNEL ACCESSORIES



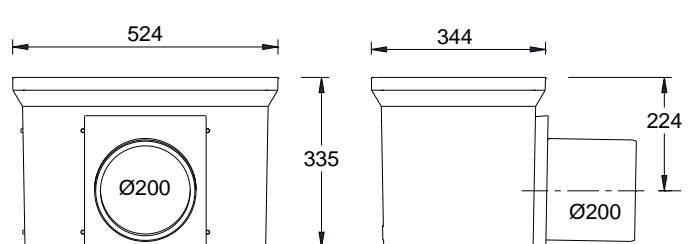
010713744



010154709



010154726



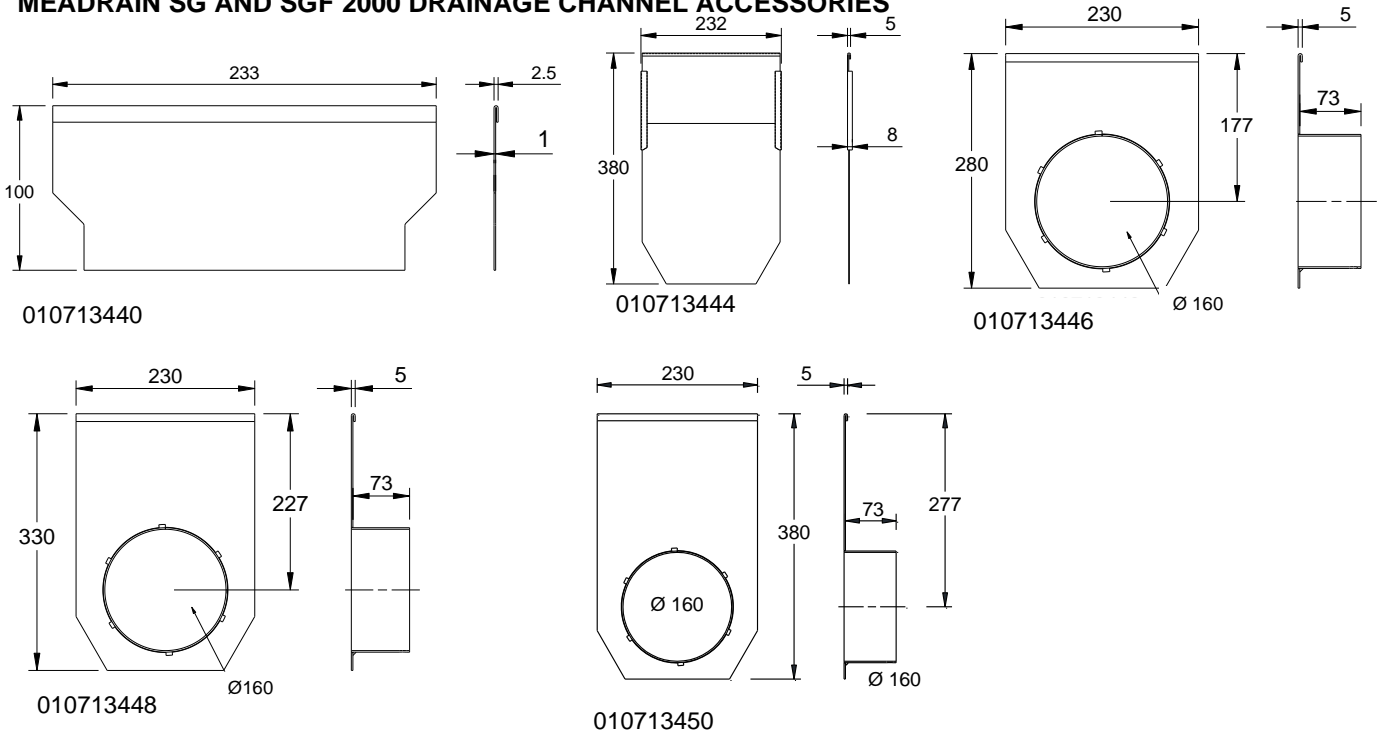
010154728

MEADRAIN SG 2000 GULLY**

| Description | Order No. | Length [mm] | Constructive height [mm] | kg/unit |
|---|-----------|-------------|--------------------------|---------|
| MEADRAIN SG 2000.SK-OT Gully upper part open on both sides for construction height 280 mm | 010713744 | 500 | 430 | 23,90 |
| MEA SK-ZT gully intermediate part made of polymer concrete for a height extension | 010154709 | 524 | 375 | 22,00 |
| MEA SK-UT short Gully lower part, with integrated drain socket Ø 160 mm | 010154726 | 524 | 335 | 25,16 |
| MEA SK-UT short Gully lower part, with integrated drain socket Ø 200 mm | 010154728 | 524 | 335 | 27,00 |
| MEADRAIN 2000 Sediment bucket for gully | 010154717 | 500 | 430 | 3,50 |

** Not suitable for the diagonal or transverse travel of motorways and highways

MEADRAIN SG AND SGF 2000 DRAINAGE CHANNEL ACCESSORIES



MEADRAIN SVF/SGF 2000 END CAP

| Description | Order No. | Material | kg/unit |
|--|-----------|-------------|---------|
| MEADRAIN SVF 2000.SE end cap closed for flat channel for channel start/ end | 010713440 | Galv. steel | 0,20 |
| MEADRAIN SV/SG 2000-20.SE End cap closed for channel start/ end, height-adjustable | 010713444 | Galv. steel | 0,80 |
| MEADRAIN SV/SG 2000.E End cap with connector $\varnothing 160$ mm, for channel end, fixed height | 010713446 | Galv. steel | 1,30 |
| MEADRAIN SV/SG 2010.E End cap with connector $\varnothing 160$ mm, for channel end fixed height | 010713448 | Galv. steel | 1,50 |
| MEADRAIN SV/SG 2020.E End cap with connector $\varnothing 160$ mm, for channel end, fixed height | 010713450 | Galv. steel | 1,60 |

JOINTING COMPOUNDS FOR STANDARD APPLICATIONS***

| Description | Order No. | Material | kg/unit |
|--|-----------|------------------------|---------|
| SABA MS Floor GREY sealant 600 ml in a bag, stable | 010152708 | MS Polymer basis | 0,84 |
| SABA Primer 9102, 1 liter | 010155803 | Silane basis | 0,92 |
| Joint Cleaner solvent 48, 1 liter, Cleaner for adhesive flanks | 010155807 | - | 0,81 |
| Dispensing gun for 600 ml bags | 010152707 | - | 0,79 |

** Not suitable for the diagonal or transverse travel of motorways and highways.

*** For water tight mounting of drainage channels (only for channels transporting rain water). Not suitable for installation in LAU facilities, gaz stations or similar constructions.

This edition of the technical data sheet shall be valid from October 2021 until a revised version is published and replaces any previous publications. The respectively current version is available for download at www.mea-group.com.

MEA Bautechnik GmbH
business unit Water Management
Sudetenstraße 1
86551 Aichach
Tel.: +49 (0) 82 51. 91 0
Fax: +49 (0) 82 51. 91 13 06
E-Mail: info@mea-group.com
www.mea-group.com