

# DECORATIVE VENEERED PANELS



## PRODUCT GUIDE



**As a leading distributor of panel products and timber the James Latham Group holds one of the widest ranges of decorative panels in stock. Complimenting our portfolio of melamine-faced boards, laminates and laminated products, we are able to offer a wide selection of realwood veneered panels.**

**Our range includes:**

- Pre-finished panels
- Veneered standard and light MDF
- Veneered particleboard and timber-core doorblanks
- Veneered chipboard
- Veneered plywood and blockboard
- Veneered flexible MDF
- Flexible veneers
- Realwood decorative high-pressure laminate



Our standard board sizes are 2440 / 3050 x 1220mm with other sizes including 2800 x 2070mm to order. Thicknesses range from 4 to 31mm, with thinner and thicker boards being available to order. We also offer a bespoke “cut-to-size” service and further processed panels.

James Latham aim to supply veneered products to meet the specific requirements of their customers. Veneer selection and grading will ultimately define our pricing. Our supply base has been very carefully selected with our customers’ needs in mind.

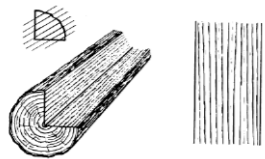
**Flexible veneers**

For a wide variety of uses, from shopfitting to furniture manufacture, a wide range of flexible veneers are offered from stock at all of our panel depots. All the popular species are held in stock in 2500/3050 x1240mm sheet sizes. Our flexible veneers are sourced from one of Europe’s leading veneered board suppliers, they are graded to a high standard and then processed to give a top quality, flexible product. We are also able to offer flexible-veneered plywood and MDF.

**Veneered doors**

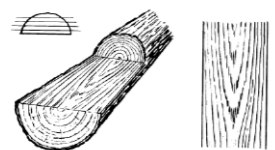
As a part of our long-term commitment to door blanks we hold a wide range of veneered doors in stock. Most regular species are held in stock in sizes 2135x915mm and 2440x1220mm in 44mm (30 minute FD) and 54mm (60 minute FD.) Other sizes and species are available to order. We are also able to offer a wide range of further processed doors with a wide range of species, sizes and patterns, including lipped doors and doors with vision panels. Our veneered doors use Halspan or Egger Eurospan particleboard door cores and a wide range of support literature and global assessments are available.

**Veneer cutting**



**Quarter cut**

Veneers are produced by cutting at right angles to the growth rings in the logs. The variations in colour brought about by summer/winter growth produce a straight grain effect.



**Crown cut**

Veneers are produced by slicing through logs, giving a less-straight grained veneer with more figure and, in general, a more decorative finish.



**Dartmoor Veneered MDF**

The Dartmoor range of veneered panels are produced to our own grading guidelines. These have been developed over time to give a superior grade of veneered board with maximum consistency.

Veneers are initially graded in their appearance before being edge glued, carefully matched and converted into lay-ons. The grading criteria includes natural defects, natural colouration, veneer leaf-width and, just as importantly, the overall appearance of the panel. For some species we may also specify the percentage of the panel that is to be crown or quarter cut, whether sapwood is allowed or whether full or half-crowns are preferred.

Only once a batch of lay-ons are approved are they sent for veneering. The boards are then veneered and labelled in batches to give maximum consistency. Boards are sanded to a high-grit finish and quality-controlled to ensure excellent quality veneered panels – every time.



# Realwood VENEERS

## Realwood Veneers

Exclusive to James Latham, this distinctive and inspiring collection of real wood veneers allows interior designers and furniture manufacturers to create stunning effects, bringing a particular depth, texture and individuality to a project, impossible to achieve with artificial materials.

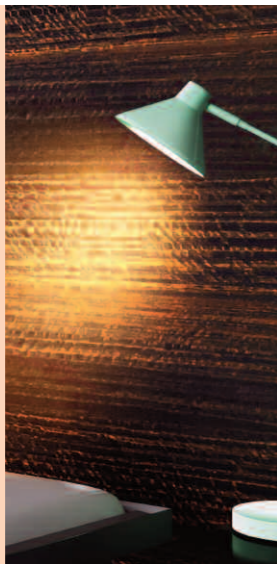
Developed over time to give a superior grade with maximum consistency, these real wood veneers - which are all from FSC® or PEFC® certified stock - include such on-trend species as Smoked Figured, Crown and Rough-Cut Eucalyptus, Cracked Oak, Smoked Larch and Satin Walnut.

**Ideal for:**

- Residential
- Shopfitting
- Hotels
- Offices

**Supplied in the following sizes:**

**2440 / 3050 x 1220mm with other sizes including 2800 x 2070mm to order**



Cracked Oak



Smoked Larch



Satin Walnut



Smoked Figured Eucalyptus



Smoked Beech



Grissard



Beam Oak



Oak Aged Figured



Smoked Crown Cut Eucalyptus Rough Cut



Oak Aged Quarter Cut



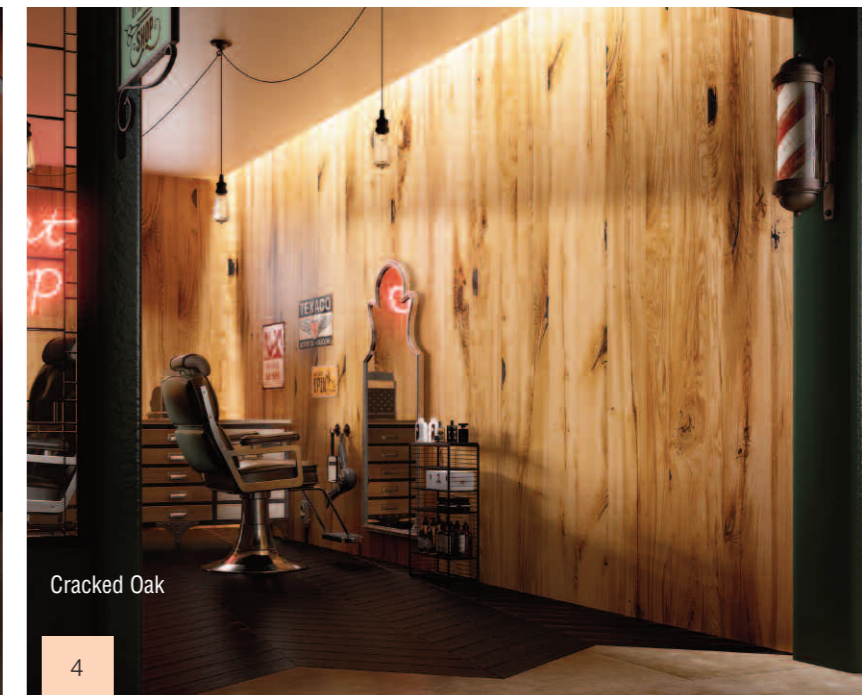
Oak Aged Rustic

The authentic, warm and natural beauty in this new range shines through, highlighting the unique characteristics, grain and tone of the wood and the collection is available through James Latham's nationwide network of panel depots.

Grissard



Smoked Larch



Cracked Oak

# look' likes

reconstituted veneers

## Look'likes

The beauty of exotic veneers, but in a range that has been manufactured from reconstituted veneers. "Look'likes" is available through James Latham, and includes exotic replications of Teak, Ebony, Wenge, Zebrano and Pallinsander, alongside new patterns of Lime and Oak. Each veneer pattern is identical in colour and structure to give maximum consistency and stunning finished panels, whilst satisfying the increasing environmental criteria of the European Union Timber Regulation. Where species come from across the globe, establishing legality of ownership can sometimes be difficult and it is prohibited to import illegally logged timber products. "Look'likes" takes away this problem.



# SHINNOKI

REAL WOOD DESIGNS

## Shinnoki 2.0 - finished, ready to use veneered panels

Available exclusively through James Latham, Shinnoki 2.0 gives you a wide choice of sturdy, pre-finished, high-quality veneered sheets, ready to be used in any interior. The range of 17 widely differing designs has been put together to cover styles from classical to on-trend, with stability and consistency at the heart of the design. The Shinnoki 2.0 collection guarantees uniform quality with the natural, lively appearance of wood, both visually and to the touch.

The product range offers a broad choice of colours, styles and species:

- 17 different designs, from classical to contemporary
- Consistent colours thanks to the industrial varnishing process
- The look of solid wood, thanks to the mixmatch technique
- Can be processed simply and quickly
- Available with matching veneer or ABS edgebanding

home concept news references dealers imagebank downloads faq contact United Kingdom

# SHINNOKI

REAL WOOD DESIGNS

CONSTRUCTION COLLECTION SUSTAINABLE DESIGN TOOL

COLLECTION 2.0

## EXPERIENCE WOOD AT ITS BEST!

Shinnoki gives you a wide choice of sturdy, high-quality veneered sheets, ready to be processed in any interior. Our range of no less than 17 widely differing designs has been put together to cover all kinds of styles, from classical to trendy.

More information? Go to [www.shinnoki.com](http://www.shinnoki.com)



To find out more about Shinnoki or James Latham's extensive range of veneers, phone; **0116 257 3415** or email [marketing@lathams.co.uk](mailto:marketing@lathams.co.uk) or visit; [www.lathamtimber.co.uk](http://www.lathamtimber.co.uk)





# James Latham Distribution Sites



## 1 James Latham Dudley ●●

T: 01384 234444  
F: 01384 233121  
E-mail: panels.dudley@lathams.co.uk  
timber.dudley@lathams.co.uk

## 2 James Latham Fareham ●●

T: 01329 854800  
F: 01329 849585  
E-mail: panels.fareham@lathams.co.uk  
timber.fareham@lathams.co.uk

## 3 James Latham Gateshead ●●

T: 0191 469 4211  
F: 0191 469 2615  
E-mail: panels.gateshead@lathams.co.uk  
timber.gateshead@lathams.co.uk

## 4 James Latham Leeds ●●

T: 0113 387 0830  
F: 0113 387 0855  
E-mail: leeds@lathams.co.uk

## 4 ATP (Advanced Technical Panels) ●●

T: 0113 387 0850  
F: 0113 387 0855  
E-mail: atp@lathams.co.uk

## 5 James Latham Scotland ●●

T: 01698 838777  
F: 01698 831452  
Email: scotland@lathams.co.uk

## 6 James Latham Wigston ●●

T: 0116 288 9161  
F: 0116 281 3806  
E-mail: panels.wigston@lathams.co.uk  
timber.wigston@lathams.co.uk

## 7 James Latham Yate ●●

T: 01454 315421  
F: 01454 323488  
E-mail: panels.yate@lathams.co.uk  
timber.yate@lathams.co.uk

## 8 James Latham Hemel Hempstead ●

T: 01442 849000  
F: 01442 239287  
E-mail: panels.hemel@lathams.co.uk  
timber.hemel@lathams.co.uk

## 9 James Latham Thurrock ●

T: 01708 869800  
F: 01708 860900  
E-mail: panels.thurrock@lathams.co.uk

## 10 James Latham Purfleet ●

T: 01708 864477  
F: 01708 862727  
E-mail: timber.purfleet@lathams.co.uk



KEY: ● PANEL PRODUCTS ●● TIMBER PRODUCTS

Follow us on:



Website: [www.lathamtimber.co.uk](http://www.lathamtimber.co.uk)

Twitter: @lathamsltd

Facebook: [www.facebook.com/lathamsltd](http://www.facebook.com/lathamsltd)

Pinterest: <https://uk.pinterest.com/Lathamsltd>



Call **0116 257 3415**  
email [marketing@lathams.co.uk](mailto:marketing@lathams.co.uk)  
or visit [www.lathamtimber.co.uk](http://www.lathamtimber.co.uk)

