



# Designer door furniture

It's what all the best dressed doors are wearing

**ASSA**<sup>®</sup>  
ASSA ABLOY

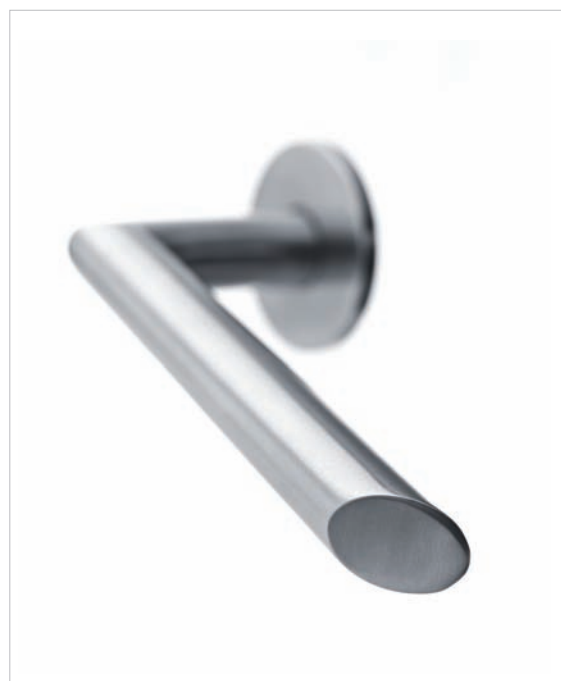
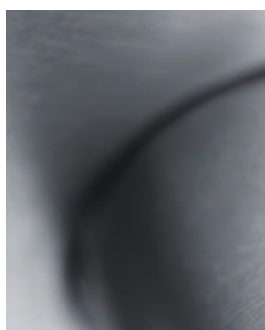
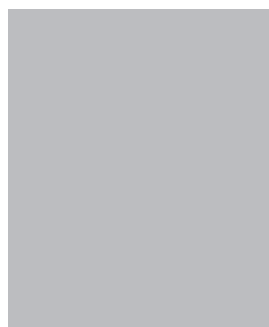
ASSA ABLOY, the global leader  
in door opening solutions



**Should door furniture be stylish and attractive?**

**Or should it be hard wearing and functional?**

**Now it's both.**



**:DO:RE:MI:** is made completely from high quality acid resistant stainless steel (AISI 316L).

**:DO:RE:MI:** is incredibly durable and maintenance-friendly in all environments indoors and outdoors.



## :DO:RE:MI:

### Designer lever handles

:DO:RE:MI: is a new series of exclusive and highly functional lever handle designs produced specifically for architects. The range is created by Arkitema, one of the leading design and architecture companies in Scandinavia. All the designs are made from acid-resistant stainless steel (AISI 316L) making the handles corrosion-proof and incredibly durable.



:DO:RE:MI:  
The entire design is carved out of a single geometric shape, providing the :DO: handle with a simple and distinctive appearance.



:DO:RE:MI:  
By creating a curved bow the :RE: lever handle has a timeless and classic look.



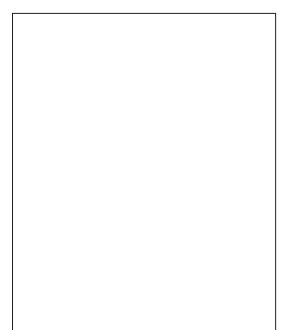
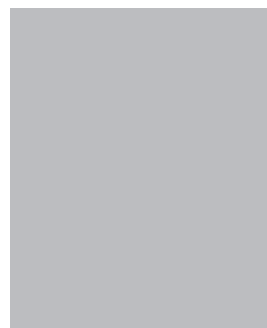
:DO:RE:MI:  
The rounded drop shape gives the :MI: lever handle an elegant softness.



# Holgaard

## **Distinctive design from leading Danish architect**

The Holgaard handle has taken Denmark by storm and now it's coming to the UK. It combines ergonomics with an uncomplicated design and works with a range of modern architectural styles. The Holgaard handle is made of high quality solid cast, acid resistant stainless steel (AISI 316L). This makes it suitable for all environments both internally and externally as it has excellent resistance to abrasion and extreme weather conditions. The Holgaard handle is not limited to a particular architectural style, as it generally matches modern architecture.







# Brighthandle

## Innovative lever handles

Brighthandle is a truly innovative new concept in door furniture design. Created by internationally renowned Swedish designer Alexander Lervik, Brighthandle is as functional as it is stylish. It is the first ever door handle to communicate using coloured light to display status as well as brightening its surroundings. Battery and mains powered options are available.

The Brighthandle in its basic shape is made from high quality acid resistant stainless steel (AISI 316L) with an acrylic grip that glows in green and red.



## Ruko-Line

### A stylish and robust solution

Ruko-Line has been developed to accommodate modern architecture's need for quality, durability and functionality. The range suits all exterior and interior environments and includes BS8300 compliant designs. Consisting of simple lines Ruko-Line provides stylish aesthetics in combination with hardwearing stainless steel.

Ruko-Line is made from high quality stainless steel (AISI 316L). The range is extremely durable and maintenance friendly and is suitable for internal and external use. Needle bearings increase durability by minimising day to day wear and tear.





# ScanFlex

## **Timeless and durable**

ScanFlex offers the simple lines and functionality of classic Scandinavian design. Made from hard-wearing stainless steel, it is both attractive and practical, elegant and resilient. Create a consistent image of quality throughout your building with ScanFlex.

ScanFlex is constructed of high quality stainless steel (AISI 304). Its classic design makes the range ideal for use in demanding environments.

## Ruko-Line

Each series also includes accessories such as turns, backplates, pullhandles etc so it is possible to meet any need for door fittings.



:DO:RE:MI:  
:DO:



:DO:RE:MI:  
:RE:



:DO:RE:MI:  
:MI:



Holgaard



Ruko-Line  
L-shape 16 mm



Ruko-Line  
L-shape 19 mm



Ruko-Line  
U-shape 16 mm



Ruko-Line  
U-shape 19 mm



Ruko-Line  
Coupé 19 mm



Ruko-Line  
Hospital 19 mm



Ruko-Line  
Hospital 19 mm



Ruko-Line  
Cranked 19 mm



Brighthandle  
Dot



Brighthandle  
Line



Brighthandle  
Alfa

*Designed by architects to fit international standards. Produced to be used in high traffic areas in the best steel quality, AISI 316L.*

### ScanFlex

The ScanFlex series also includes accessories such as turns, backplates, pullhandles escutcheons etc.



ScanFlex  
L-shape 16 mm



ScanFlex  
L-shape 19 mm



ScanFlex  
U-shape 16 mm



ScanFlex  
U-shape 19 mm



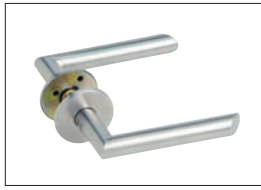
ScanFlex  
Coupé



ScanFlex  
Denmark



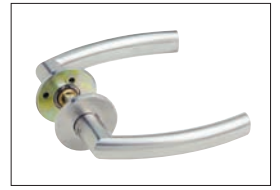
ScanFlex  
Finland



ScanFlex  
Iceland



ScanFlex  
Norway



ScanFlex  
Sweden



ScanFlex  
Copenhagen



ScanFlex  
Oslo



ScanFlex  
Stockholm

*Classic design for every day use. Fits international standards in the good steel quality, AISI 304.*

ASSA ABLOY is the global leader in door opening solutions, dedicated to satisfying end-user needs for security, safety and convenience.



ASSA  
Units 3-4 ZK Park  
23 Commerce Way  
Croydon  
CR0 4ZS  
T: 020 8688 5191  
F: 020 8688 0285  
Email: [sales@assa.co.uk](mailto:sales@assa.co.uk)  
Web: [www.assa.co.uk](http://www.assa.co.uk)