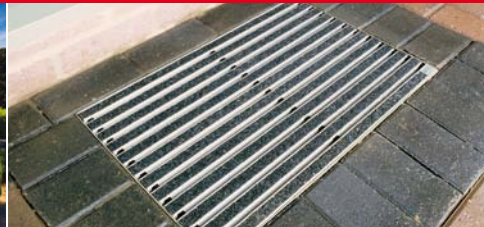


| | |
|-------------------|--------------|
| Uniclass L5367 | EPIC E482 |
| Cl/SfB (71.3) | |

ACO Water Management: Urban + Landscape

ACO DrainMat

- ✓ Polymer or polypropylene base available
- ✓ Can connect to Ø110mm underground drainage
- ✓ Four styles of surface finish available
- ✓ Easy to install, only 80mm deep
- ✓ Heavy grit settles out for easy cleaning
- ✓ Matwells eliminate the risk of water ponding at house entrances
- ✓ Mat profile dislodges dirt from footwear easily
- ✓ Matching InDoor available for complementary internal matwell appearance



ACO DrainMat

Part M compliant domestic matwells

ACO DrainMat gives you the appeal of a traditional matwell, without the problems of water ponding at house entrances.

Two types of base are available. The polymer concrete base is available in three sizes and the polypropylene base is available in one size.

ACO DrainMat's tough polymer concrete base unit is completely impervious to frost and chemicals and drains rainwater away from your doorway, leaving it clean, dry and safe.

A slim galvanised steel edge unobtrusively holds your choice of grating in place (in the polymer concrete base only), and allows ACO DrainMat to fit with block paving, slabs or even gravel.

Four styles of mat surface are available: robust galvanised steel mesh, tough aluminium and rubber, and two colours of carpet with aluminium.

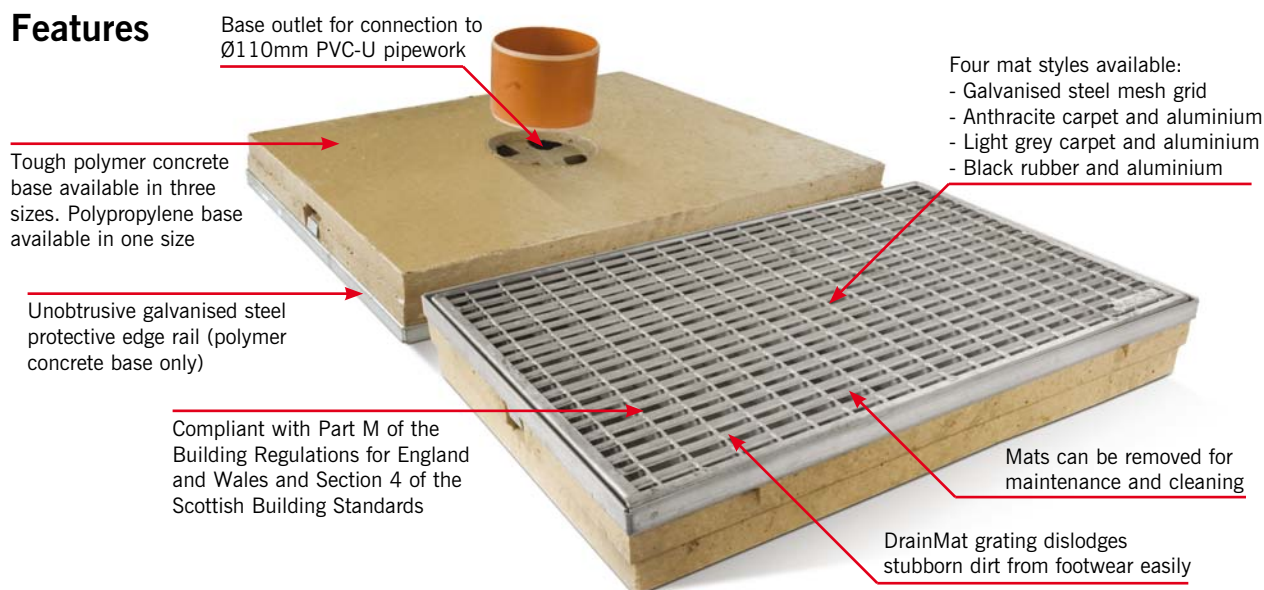
Typical applications

- ▶ Residential developments
- ▶ Threshold drainage

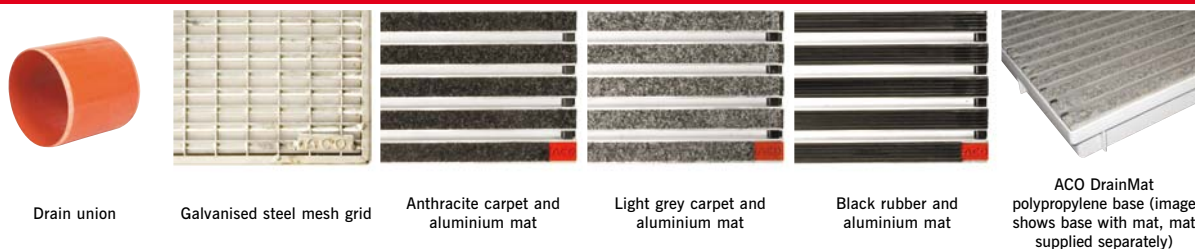
ACO DrainMat

System overview

Features



ACO DRAINMAT ACCESSORIES



ACO DrainMat bases

| Product Code | Description | Length mm | Width Overall mm | Depth Overall mm | Weight kg |
|--------------|----------------------------------|-----------|------------------|------------------|-----------|
| 0398 | Polymer concrete base 600 x 400 | 600 | 400 | 80 | 12.0 |
| 0399 | Polymer concrete base 750 x 500 | 750 | 500 | 80 | 18.0 |
| 0400 | Polymer concrete base 1000 x 500 | 1000 | 500 | 80 | 21.6 |
| 82400 | Polypropylene base 600 x 400 | 600 | 400 | 75 | 1.5 |

Mat styles

| Product Code | Description | Length mm | Width Overall mm | Depth Overall mm | Weight kg |
|--------------|--|-----------|------------------|------------------|-----------|
| 1207 | Galvanised steel mesh grid 600 x 400 | 600 | 400 | 20 | 4.0 |
| 1208 | Galvanised steel mesh grid 750 x 500 | 750 | 500 | 20 | 6.3 |
| 1209 | Galvanised steel mesh grid 1000 x 500 | 1000 | 500 | 20 | 8.6 |
| 1210 | Anthracite carpet and aluminium 600 x 400 | 600 | 400 | 20 | 3.5 |
| 1211 | Anthracite carpet and aluminium 750 x 500 | 750 | 500 | 20 | 4.7 |
| 1212 | Anthracite carpet and aluminium 1000 x 500 | 1000 | 500 | 20 | 6.3 |
| 02180 | Light grey carpet and aluminium 600 x 400 | 600 | 400 | 20 | 3.5 |
| 02181 | Light grey carpet and aluminium 750 x 500 | 750 | 500 | 20 | 4.7 |
| 02182 | Light grey carpet and aluminium 1000 x 500 | 1000 | 500 | 20 | 6.3 |
| 1213 | Black rubber and aluminium 600 x 400 | 600 | 400 | 20 | 3.5 |
| 1214 | Black rubber and aluminium 750 x 500 | 750 | 500 | 20 | 5.6 |
| 1215 | Black rubber and aluminium 1000 x 500 | 1000 | 500 | 20 | 7.5 |

| Product Code | Description | Length mm | Width Overall mm | Depth Overall mm | Weight kg |
|--------------|------------------------------|-----------|------------------|------------------|-----------|
| 0056 | 820 Drain union PVC-U Ø110mm | 100 | Ø110 | - | 0.1 |

Specification Clause

The matwell shall be ACO DrainMat as supplied by ACO Technologies plc. All materials and components within the system shall be supplied by the manufacturer. The system shall include a base manufactured from *(polymer concrete or polypropylene) with provision for connection to Ø110mm PVC-U drainage pipework. The base shall be installed with the manufacturer's removable drain mat in *(galvanised steel grid or anthracite carpet and aluminium or light grey carpet and aluminium or black rubber and aluminium).

The system shall be installed in accordance with the manufacturer's printed instructions, and the work carried out as specified on drawing no. †(... ..) and in accordance with recognised good practice. Standards of work shall generally be as specified in BS EN 752 and BS 8000:Part 14.

*delete non-appropriate information

†insert drawing reference

Note: A specification in NBS format is available to download from www.thenbs.com or www.aco.co.uk.

ACO Technologies plc

ACO Business Park, Hitchin Road, Shefford, Bedfordshire SG17 5TE
 Tel: 01462 816666 Fax: 01462 815895
 e-mail: technologies@aco.co.uk website: www.aco.co.uk

